

---

# **LARAMIE ENERGY II LLC EBUSINESS**

---

**SOUTH LEVERICH 18-05C  
PICEANCE  
Garfield County , Colorado**

**Cement Surface Casing**  
**04-Mar-2009**

**Job Site Documents**

## The Road to Excellence Starts with Safety

<b>Sold To #:</b> 344919		<b>Ship To #:</b> 344919		<b>Quote #:</b>		<b>Sales Order #:</b> 6481865	
<b>Customer:</b> LARAMIE ENERGY II LLC EBUSINESS				<b>Customer Rep:</b> CLAUSSEN, CORY			
<b>Well Name:</b> SOUTH LEVERICH			<b>Well #:</b> 18-05C			<b>API/UWI #:</b>	
<b>Field:</b> PICEANCE		<b>City (SAP):</b> DENVER		<b>County/Parish:</b> Garfield		<b>State:</b> Colorado	
<b>Contractor:</b> GREYWOLF 706			<b>Rig/Platform Name/Num:</b> GREYWOLF 706				
<b>Job Purpose:</b> Cement Surface Casing							
<b>Well Type:</b> Development Well			<b>Job Type:</b> Cement Surface Casing				
<b>Sales Person:</b> METLI, MARSHALL			<b>Srvc Supervisor:</b> ROCKERT, CHRISTOPHER			<b>MBU ID Emp #:</b> 332914	

### Job Personnel

HES Emp Name	Exp Hrs	Emp #	HES Emp Name	Exp Hrs	Emp #	HES Emp Name	Exp Hrs	Emp #
ANDREWS, ANTHONY Michael	4	321604	ANGLESTEIN, TROY Edward WM	4	436099	HAAS, MICHAEL C	4	455469
MADRIGAL, MARK Henry	4	444368	RIPA, R Nicholas	4	271144	ROCKERT, CHRISTOPHER Michael	4	332914
VIGIL, JOSHUA Quentin	4	447606						

### Equipment

HES Unit #	Distance-1 way	HES Unit #	Distance-1 way	HES Unit #	Distance-1 way	HES Unit #	Distance-1 way
10025121	85 mile	10243540C	85 mile	10638378	85 mile	10822535	85 mile
10871245	85 mile	10951245	85 mile	11021972	85 mile	11027039	85 mile

### Job Hours

Date	On Location Hours	Operating Hours	Date	On Location Hours	Operating Hours	Date	On Location Hours	Operating Hours
3/3/09	3	1	3/4/09	.5	.5			
<b>TOTAL</b>			Total is the sum of each column separately					

### Job

### Job Times

Formation Name					Date	Time	Time Zone
Formation Depth (MD)	Top		Bottom		Called Out	03 - Mar - 2009	16:00 MST
Form Type	BHST				On Location	03 - Mar - 2009	21:00 MST
Job depth MD	1551. ft		Job Depth TVD	1551. ft	Job Started	03 - Mar - 2009	22:51 MST
Water Depth			Wk Ht Above Floor	5. ft	Job Completed	04 - Mar - 2009	00:08 MST
Perforation Depth (MD)	From		To		Departed Loc	04 - Mar - 2009	02:20 MST

### Well Data

Description	New / Used	Max pressure psig	Size in	ID in	Weight lbm/ft	Thread	Grade	Top MD ft	Bottom MD ft	Top TVD ft	Bottom TVD ft
OPEN HOLE				14.75				.	1550.		
SURFACE CASING	New		8.625	8.097	24.		J-55	.	1551.		

### Sales/Rental/3<sup>rd</sup> Party (HES)

Description	Qty	Qty uom	Depth	Supplier
PLUG,CMTG,TOP,8 5/8,HWE,7.20 MIN/8.09 MA	1	EA		
PORT. DAS W/CEMWIN;ACQUIRE W/HES, ZI	1	JOB		
ADC (AUTO DENSITY CTRL) SYS, /JOB,ZI	1	JOB		

### Tools and Accessories

Type	Size	Qty	Make	Depth	Type	Size	Qty	Make	Depth	Type	Size	Qty	Make
Guide Shoe					Packer					Top Plug	8.625	1	
Float Shoe					Bridge Plug					Bottom Plug			
Float Collar					Retainer					SSR plug set			
Insert Float										Plug Container	8.625	1	
Stage Tool										Centralizers			

Miscellaneous Materials													
Gelling Agt		Conc		Surfactant		Conc		Acid Type		Qty		Conc	%
Treatment Fld		Conc		Inhibitor		Conc		Sand Type		Size		Qty	
Fluid Data													
Stage/Plug #: 1													
Fluid #	Stage Type	Fluid Name			Qty	Qty uom	Mixing Density lbm/gal	Yield ft3/sk	Mix Fluid Gal/sk	Rate bbl/min	Total Mix Fluid Gal/sk		
1	WATER SPACER				20	bbl	.	.0	.0	.0			
2	Lead Cement	VERSACEM (TM) SYSTEM (452010)			350	sacks	12.3	2.38	13.75		13.75		
3	Tail Cement	SWIFTCES (TM) SYSTEM (452990)			300	sacks	14.2	1.43	6.88		6.88		
4	DISPLACEMENT				92.6	bbl	.	.0	.0	.0			
Calculated Values			Pressures			Volumes							
Displacement	92.6	Shut In: Instant			Lost Returns	NO	Cement Slurry		224.8	Pad			
Top Of Cement	SURACE	5 Min			Cement Returns	60	Actual Displacement		92.6	Treatment			
Frac Gradient		15 Min			Spacers	20	Load and Breakdown			Total Job	338		
Rates													
Circulating	RIG	Mixing		8	Displacement	8	Avg. Job		8				
Cement Left In Pipe	Amount	30.3 ft	Reason	Shoe Joint									
Frac Ring # 1 @	ID		Frac ring # 2 @	ID		Frac Ring # 3 @	ID		Frac Ring # 4 @	ID			
The Information Stated Herein Is Correct					Customer Representative Signature								

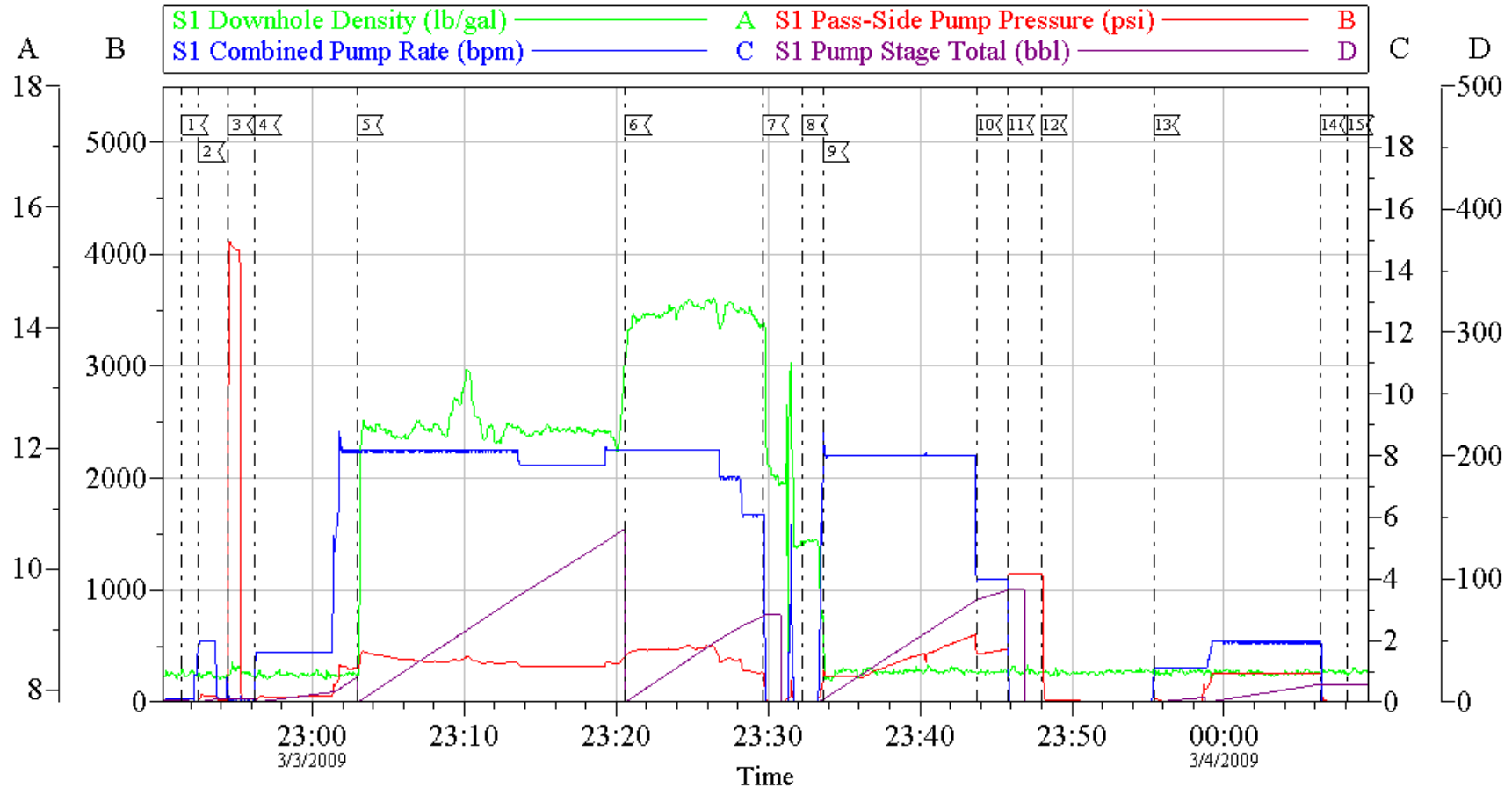
*The Road to Excellence Starts with Safety*

<b>Sold To #:</b> 344919	<b>Ship To #:</b> 344919	<b>Quote #:</b>	<b>Sales Order #:</b> 6481865
<b>Customer:</b> LARAMIE ENERGY II LLC EBUSINESS		<b>Customer Rep:</b> CLAUSSEN, CORY	
<b>Well Name:</b> SOUTH LEVERICH		<b>Well #:</b> 18-05C	<b>API/UWI #:</b>
<b>Field:</b> PICEANCE	<b>City (SAP):</b> DENVER	<b>County/Parish:</b> Garfield	<b>State:</b> Colorado
<b>Legal Description:</b>			
<b>Lat:</b> N 0 deg. OR N 0 deg. 0 min. 0 secs.		<b>Long:</b> E 0 deg. OR E 0 deg. 0 min. 0 secs.	
<b>Contractor:</b> GREYWOLF 706		<b>Rig/Platform Name/Num:</b> GREYWOLF 706	
<b>Job Purpose:</b> Cement Surface Casing			<b>Ticket Amount:</b>
<b>Well Type:</b> Development Well		<b>Job Type:</b> Cement Surface Casing	
<b>Sales Person:</b> METLI, MARSHALL		<b>Srv Supervisor:</b> ROCKERT, CHRISTOPHER	<b>MBU ID Emp #:</b> 332914

Activity Description	Date/Time	Cht #	Rate bbl/min	Volume bbl		Pressure psig		Comments
				Stage	Total	Tubing	Casing	
Call Out	03/03/2009 16:00							TD-1550/ TP-1551/ SHOE-30.3/ MUD-9.8/ HOLE-14.75
Arrive At Loc	03/03/2009 21:00							ELITE #8
Rig-Up Equipment	03/03/2009 21:15							
Safety Meeting - Pre Job	03/03/2009 22:30							COMPANY MAN CONFRIMED PLUG WAS LOADED AND ZIP TIED.
Start Job	03/03/2009 22:51							HEAD WAS SECURED DOWN ENTIRE JOB
Other	03/03/2009 22:52		2	2			55.0	PRIME LINES
Test Lines	03/03/2009 22:54		1				4100.0	NO LEAKS
Pump Spacer	03/03/2009 22:56		8	20			316.0	FRESH WATER. CIRCULATION ESTABLISHED
Pump Lead Cement	03/03/2009 23:02		8	148.4			454.0	350 SKS/ 2.38 YIELD/ 13.75 GAL.SK
Pump Tail Cement	03/03/2009 23:20		8	76.4			450.0	300 SKS/ 1.43 YIELD/ 6.88 GAL.SK
Shutdown	03/03/2009 23:29							
Drop Plug	03/03/2009 23:32							PLUG AWAY
Pump Displacement	03/03/2009 23:33		8				240.0	FRESH WATER
Cement Returns to Surface	03/03/2009 23:39		8	32				60 BBLS CEMENT TO SURFACE
Slow Rate	03/03/2009 23:43		4	82			438.0	

Activity Description	Date/Time	Cht #	Rate bbl/ min	Volume bbl		Pressure psig		Comments
				Stage	Total	Tubing	Casing	
Bump Plug	03/03/2009 23:45		4	92.6			500.0	PRESSURED UP TO 1142 PSI ON FLOATS
Check Floats	03/03/2009 23:47							FLOATS HELD. 1/2 BBL BACK
Other	03/03/2009 23:55		2	19			9.0	PUMP DOWN PARASITE STRING. 4 BBLS AWAY GOT CIRCULATION. PUMPED 19 BBLS TOTAL WATER.
Shutdown	03/04/2009 00:06							GOOD LIFT PRESSURE DURING DISPLACEMENT.
End Job	03/04/2009 00:08							GOOD CIRCULATION THROUGHOUT JOB.
Rig-Down Equipment	03/04/2009 00:20							THANK YOU FOR USING HALLIBURTON CHRIS ROCKERT AND CREW.

## LARAMIE 2 8 5/8 SURFACE



### Local Event Log

1 START JOB	3/3/2009 22:51:26	2 PRIME LINES	3/3/2009 22:52:32	3 TEST LINES	3/3/2009 22:54:27
4 PUMP SPACER	3/3/2009 22:56:14	5 PUMP LEAD CEMENT	3/3/2009 23:02:57	6 PUMP TAIL CEMENT	3/3/2009 23:20:36
7 SHUTDOWN	3/3/2009 23:29:38	8 DROP PLUG	3/3/2009 23:32:14	9 PUMP DISPLACEMENT	3/3/2009 23:33:36
10 SLOW RATE	3/3/2009 23:43:44	11 BUMP PLUG	3/3/2009 23:45:48	12 CHECK FLOATS	3/3/2009 23:47:59
13 PUMP DOWN PARASITE	3/3/2009 23:55:22	14 SHUTDOWN	3/4/2009 00:06:19	15 END JOB	3/4/2009 00:08:06

Customer: LARAMIE 2  
Well Description: 18-05C  
Company Rep: CORY CLAUSSEN

Job Date: 03-Mar-2009  
Job Type: 8 5/8 SURFACE  
Cement Supervisor: CHRIS ROCKERT

Sales Order #: 6481865  
ADC Used: YES  
Elite #: 8 MARK MADRIGAL

OptiCem v6.3.4  
04-Mar-09 00:21