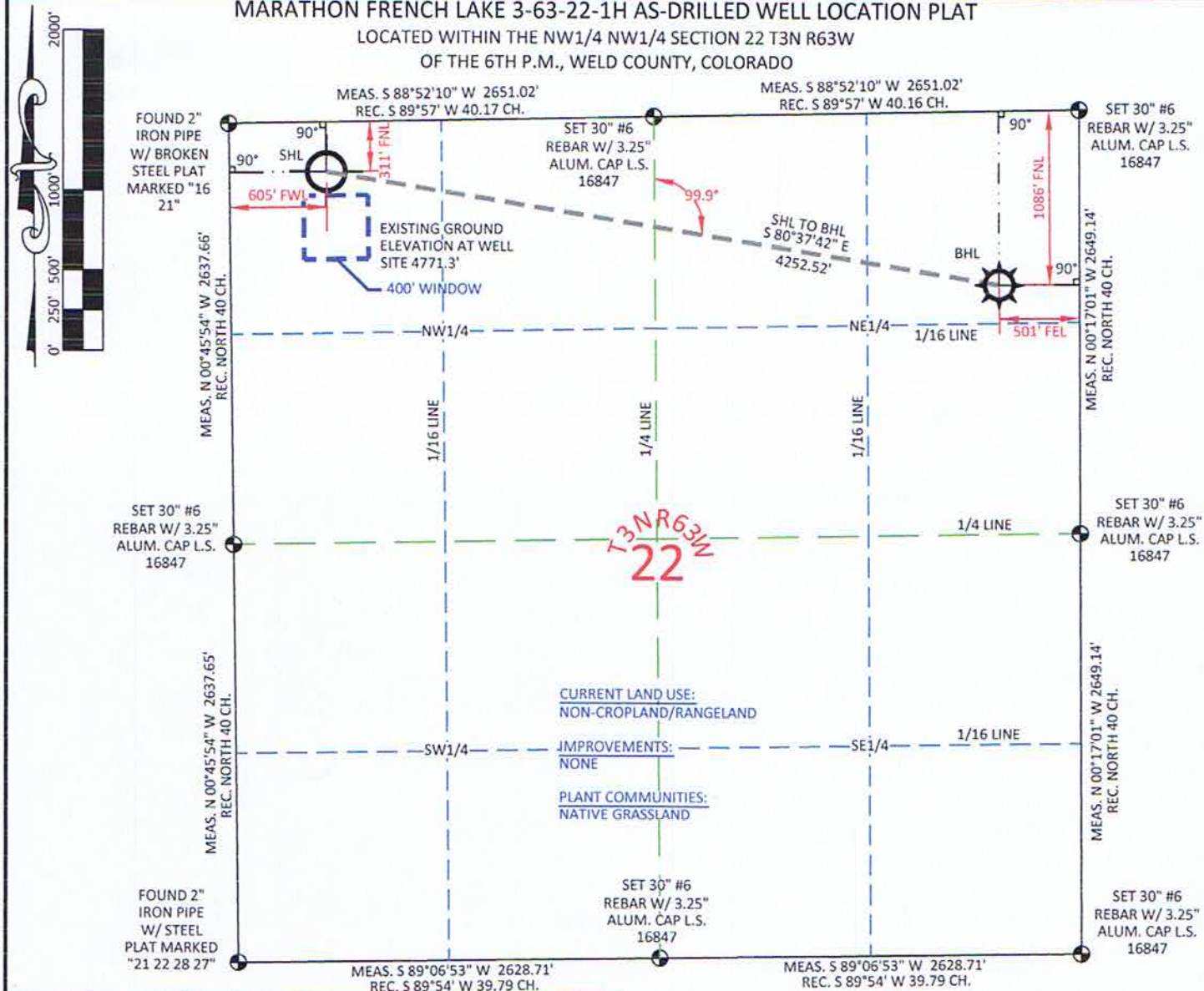


# MARATHON FRENCH LAKE 3-63-22-1H AS-DRILLED WELL LOCATION PLAT

LOCATED WITHIN THE NW1/4 NW1/4 SECTION 22 T3N R63W

OF THE 6TH P.M., WELD COUNTY, COLORADO

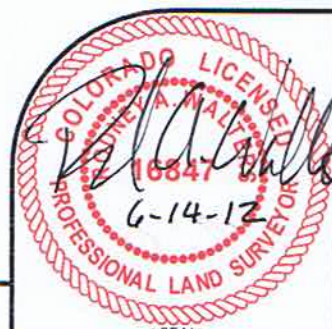


SURFACE HOLE LOCATION	
MEASURE DATE	5/3/2012
INSTRUMENT OPERATOR	LAUREN VANCE
PDOP	1.5
SHL GRND ELEV.	4771.3

BOTTOM HOLE LOCATION	
MEASURE DATE	5/3/2012
INSTRUMENT OPERATOR	LAUREN VANCE
PDOP	1.5
SHL GRND ELEV.	4771.3

I, Rodney A. Walters, Professional Land Surveyor, CO. RLS #16847 hereby certify that (in accordance with a request from Erin Bibeau with Marathon Oil Co, 5555 San Felipe, Houston, TX 77056) I and or personnel under my direction made a survey on the 3rd day of May 2012, for the Surface Hole Location and Elevation of Marathon Oil Co. FRENCH LAKE 3-63-22-1H being located within the NW 1/4 NW 1/4 Section 22, T3N R63W and the Bottom Hole Location being located in the NE 1/4 NE 1/4 of Section 22 T3N, R63W, both being of the 6th P.M., Weld County, State of Colorado.

- All bearings and distances are GRID, based on the Colorado State Plane Coordinate System, North Zone, North American Datum 1983 from GPS observations occupying a WHS control point (5/8" rebar) and having the Location and Elevation derived from an Opus Solution.
- Vertical Datum used is of NAVD 88.
- Record Bearings and Distances as shown are based on the General Land Office Survey plat approved on the 24th day of November 1868.
- Geographic coordinates for the bottom hole location were taken from the wellpath report prepared by Baker Hughes for French Lake 3-63-22-1H and dated 5/23/2012.



**CONFIDENTIALITY NOTES:**  
The information contained in this plat is legally privileged and confidential information intended only for the use of the recipients. If you are not the intended recipients, you are hereby notified that any use, dissemination, distribution or copying of this information is strictly prohibited.

**WILLIAM H. SMITH & ASSOCIATES P.C.**  
SURVEYING CONSULTANTS  
350 EAST SECOND NORTH GREEN RIVER, WY 80430  
PHONE: 307-875-3638 307-875-3639  
www.williamsmithpc.com

**LEGEND**

- FOUND OR SET CORNER
- CALCULATED CORNER
- NOTHING FOUND

**LOCATION:**  
FRENCH LAKE 3-63-22-1H  
WITHIN THE NW/4 NW/4 SECTION 22,  
T 3 N, R 63 W,  
6TH P.M.,  
WELD COUNTY,  
COLORADO

**MARATHON OIL COMPANY**  
PO BOX 3128, HOUSTON TX, 77253  
5555 SAN FELIPE, HOUSTON TX, 77056

**AS-DRILLED WELL LOCATION PLAT**  
SCALE: 1"=1000'  
DATE: 6/12/2012  
SHEET 1 OF 1