

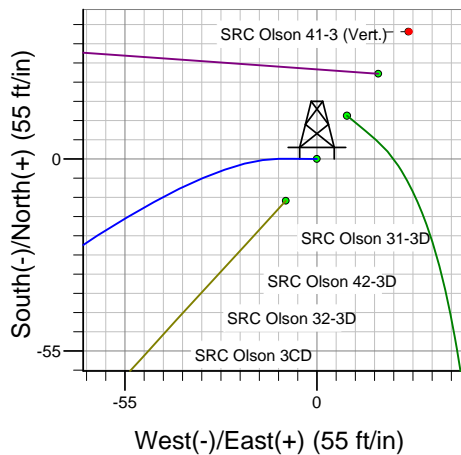
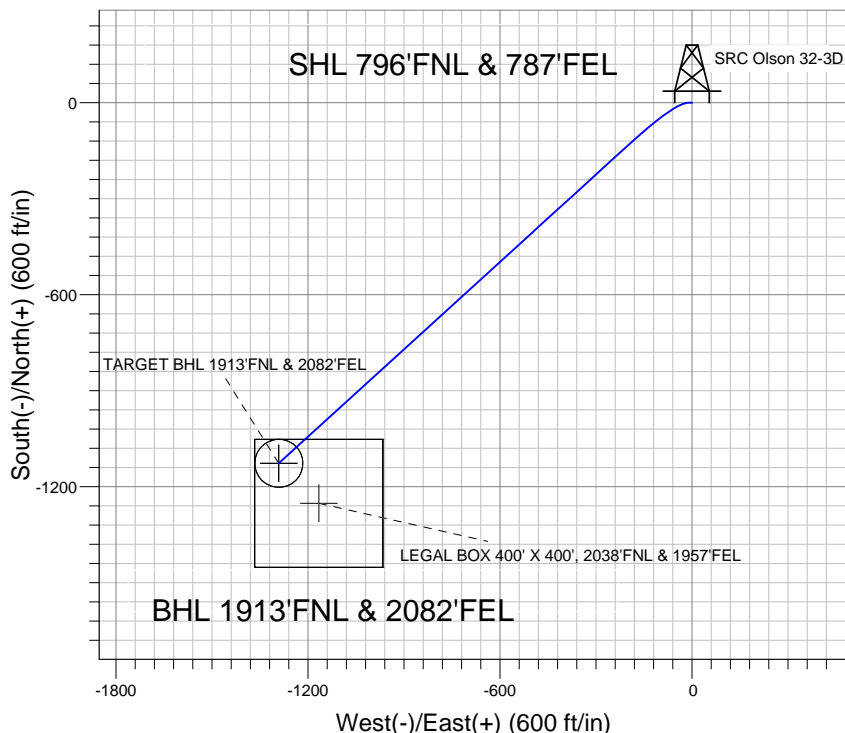
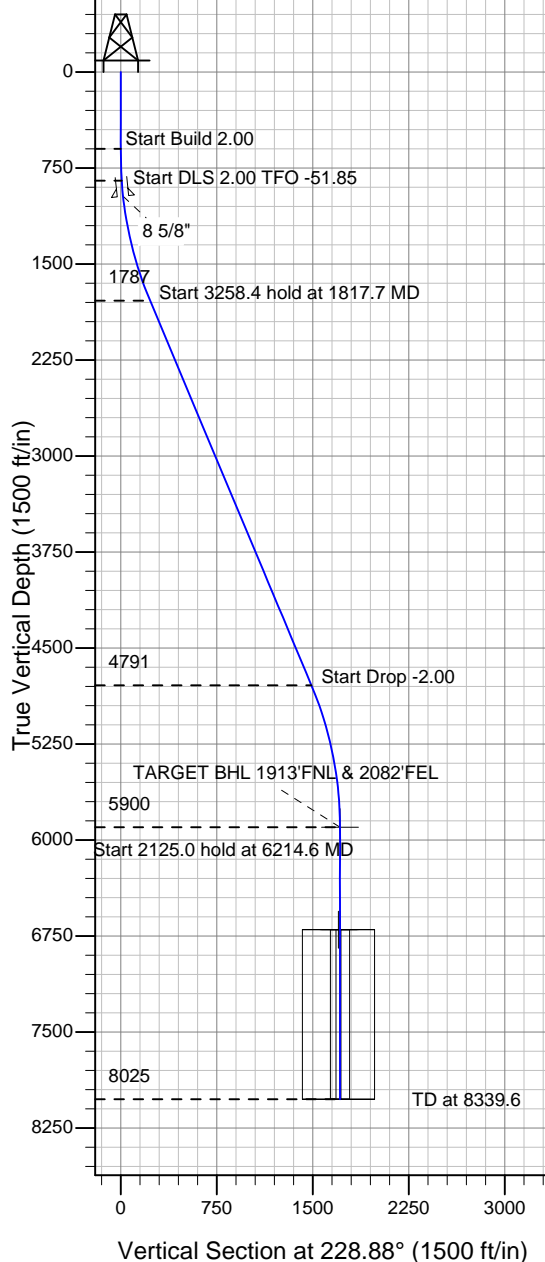
### Well Name: SRC Olson 32-3D

Surface Location: SRC Olson 41-3 Pad Sec.3-T3N-R68W  
North American Datum 1983 , US State Plane 1983 , Colorado Northern Zone

Ground Elevation: 5042.0

+N/-S	+E/-W	Northing	Easting	Latitude	Longitude	Slot
0.0	0.0	1338144.23	3144372.78	40.260449	-104.982687	
Original Well Elev WELL @ 5055.0ft (Original Well Elev)						

## Synergy Resources



SRC Olson 41-3 Pad Sec.3-T3N-R68W  
SRC Olson 32-3D  
Plan #1 (6-29-12)  
10:07, July 03 2012



Azimuths to True North  
Magnetic North: 8.83°

Magnetic Field  
Strength: 52922.3snT  
Dip Angle: 66.87°  
Date: 7/2/2012  
Model: IGRF2010

### WELLBORE TARGET DETAILS (LAT/LONG)

Name	TVD	+N/-S	+E/-W	Latitude	Longitude	Shape
TARGET BHL 1913'FNL & 2082'FEL	5900.0	-1126.7	-1290.9	40.257356	-104.987312	Point
LEGAL BOX 400' X 400', 2038'FNL & 1957'FEL	6700.0	-1251.7	-1165.9	40.257013	-104.986864	Rectangle (Sides: L400.0 W400.0)
TARGET CIRCLE 1913'FNL & 2082'FEL	6700.0	-1126.7	-1290.9	40.257356	-104.987312	Circle (Radius: 75.0)

### SECTION DETAILS

Sec	MD	Inc	Azi	TVD	+N/-S	+E/-W	DLeg	TFace	VSec	Target
1	0.0	0.00	0.00	0.0	0.0	0.0	0.00	0.00	0.0	
2	600.0	0.00	0.00	600.0	0.0	0.0	0.00	0.00	0.0	
3	850.0	5.00	270.00	849.7	0.0	-10.9	2.00	270.00	8.2	
4	1817.7	22.77	227.68	1786.7	-127.3	-193.3	2.00	-51.85	229.3	
5	5076.1	22.77	227.68	4791.2	-976.4	-1125.8	0.00	0.00	1490.2	
6	6214.6	0.00	0.00	5900.0	-1126.7	-1290.9	2.00	180.00	1713.5	TARGET BHL 1913'FNL & 2082'FEL
7	8339.6	0.00	0.00	8025.0	-1126.7	-1290.9	0.00	0.00	1713.5	



## **Synergy Resources**

**SEC.3-T3N-R68W**

**SRC Olson 41-3 Pad Sec.3-T3N-R68W**

**SRC Olson 32-3D**

**Wellbore #1**

**Plan: Plan #1 (6-29-12)**

## **Standard Planning Report**

**03 July, 2012**

Plan Sections										
Measured Depth (ft)	Inclination (°)	Azimuth (°)	Vertical Depth (ft)	+N/-S (ft)	+E/-W (ft)	Dogleg Rate (°/100ft)	Build Rate (°/100ft)	Turn Rate (°/100ft)	TFO (°)	Target
0.0	0.00	0.00	0.0	0.0	0.0	0.00	0.00	0.00	0.00	
600.0	0.00	0.00	600.0	0.0	0.0	0.00	0.00	0.00	0.00	
850.0	5.00	270.00	849.7	0.0	-10.9	2.00	2.00	0.00	270.00	
1,817.7	22.77	227.68	1,786.7	-127.3	-193.3	2.00	1.84	-4.37	-51.85	
5,076.1	22.77	227.68	4,791.2	-976.4	-1,125.8	0.00	0.00	0.00	0.00	
6,214.6	0.00	0.00	5,900.0	-1,126.7	-1,290.9	2.00	-2.00	0.00	180.00	TARGET BHL 1913
8,339.6	0.00	0.00	8,025.0	-1,126.7	-1,290.9	0.00	0.00	0.00	0.00	

<b>Database:</b>	Landmark	<b>Local Co-ordinate Reference:</b>	Well SRC Olson 32-3D
<b>Company:</b>	Synergy Resources	<b>TVD Reference:</b>	WELL @ 5055.0ft (Original Well Elev)
<b>Project:</b>	SEC.3-T3N-R68W	<b>MD Reference:</b>	WELL @ 5055.0ft (Original Well Elev)
<b>Site:</b>	SRC Olson 41-3 Pad Sec.3-T3N-R68W	<b>North Reference:</b>	True
<b>Well:</b>	SRC Olson 32-3D	<b>Survey Calculation Method:</b>	Minimum Curvature
<b>Wellbore:</b>	Wellbore #1		
<b>Design:</b>	Plan #1 (6-29-12)		

Planned Survey									
Measured Depth (ft)	Inclination (°)	Azimuth (°)	Vertical Depth (ft)	+N/-S (ft)	+E/-W (ft)	Vertical Section (ft)	Dogleg Rate (°/100ft)	Build Rate (°/100ft)	Turn Rate (°/100ft)
0.0	0.00	0.00	0.0	0.0	0.0	0.0	0.00	0.00	0.00
40.0	0.00	0.00	40.0	0.0	0.0	0.0	0.00	0.00	0.00
80.0	0.00	0.00	80.0	0.0	0.0	0.0	0.00	0.00	0.00
120.0	0.00	0.00	120.0	0.0	0.0	0.0	0.00	0.00	0.00
160.0	0.00	0.00	160.0	0.0	0.0	0.0	0.00	0.00	0.00
200.0	0.00	0.00	200.0	0.0	0.0	0.0	0.00	0.00	0.00
240.0	0.00	0.00	240.0	0.0	0.0	0.0	0.00	0.00	0.00
280.0	0.00	0.00	280.0	0.0	0.0	0.0	0.00	0.00	0.00
320.0	0.00	0.00	320.0	0.0	0.0	0.0	0.00	0.00	0.00
360.0	0.00	0.00	360.0	0.0	0.0	0.0	0.00	0.00	0.00
400.0	0.00	0.00	400.0	0.0	0.0	0.0	0.00	0.00	0.00
440.0	0.00	0.00	440.0	0.0	0.0	0.0	0.00	0.00	0.00
480.0	0.00	0.00	480.0	0.0	0.0	0.0	0.00	0.00	0.00
520.0	0.00	0.00	520.0	0.0	0.0	0.0	0.00	0.00	0.00
560.0	0.00	0.00	560.0	0.0	0.0	0.0	0.00	0.00	0.00
600.0	0.00	0.00	600.0	0.0	0.0	0.0	0.00	0.00	0.00
640.0	0.80	270.00	640.0	0.0	-0.3	0.2	2.00	2.00	0.00
680.0	1.60	270.00	680.0	0.0	-1.1	0.8	2.00	2.00	0.00
720.0	2.40	270.00	720.0	0.0	-2.5	1.9	2.00	2.00	0.00
760.0	3.20	270.00	759.9	0.0	-4.5	3.4	2.00	2.00	0.00
800.0	4.00	270.00	799.8	0.0	-7.0	5.3	2.00	2.00	0.00
840.0	4.80	270.00	839.7	0.0	-10.0	7.6	2.00	2.00	0.00
850.0	5.00	270.00	849.7	0.0	-10.9	8.2	2.00	2.00	0.00
880.0	5.39	264.97	879.6	-0.1	-13.6	10.3	2.00	1.30	-16.76
920.0	5.97	259.35	919.4	-0.7	-17.5	13.6	2.00	1.44	-14.06
960.0	6.59	254.75	959.1	-1.7	-21.8	17.5	2.00	1.56	-11.50
971.0	6.77	253.64	970.0	-2.0	-23.0	18.7	2.00	1.62	-10.14
8 5/8"									
1,000.0	7.25	250.96	998.8	-3.1	-26.4	21.9	2.00	1.65	-9.23
1,040.0	7.93	247.81	1,038.5	-5.0	-31.3	26.9	2.00	1.71	-7.88
1,080.0	8.63	245.16	1,078.1	-7.3	-36.6	32.3	2.00	1.76	-6.62
1,120.0	9.35	242.91	1,117.6	-10.0	-42.2	38.4	2.00	1.80	-5.62
1,160.0	10.08	240.98	1,157.0	-13.2	-48.2	45.0	2.00	1.83	-4.82
1,200.0	10.82	239.32	1,196.3	-16.8	-54.5	52.1	2.00	1.85	-4.17
1,240.0	11.57	237.86	1,235.6	-20.8	-61.1	59.7	2.00	1.87	-3.64
1,280.0	12.33	236.58	1,274.7	-25.3	-68.1	67.9	2.00	1.89	-3.20
1,320.0	13.09	235.45	1,313.7	-30.2	-75.4	76.7	2.00	1.90	-2.84
1,360.0	13.85	234.44	1,352.6	-35.6	-83.0	85.9	2.00	1.91	-2.53
1,400.0	14.62	233.53	1,391.4	-41.4	-90.9	95.7	2.00	1.92	-2.27
1,440.0	15.39	232.71	1,430.0	-47.6	-99.2	106.1	2.00	1.93	-2.05
1,480.0	16.17	231.97	1,468.5	-54.3	-107.8	116.9	2.00	1.94	-1.85
1,520.0	16.94	231.29	1,506.9	-61.3	-116.8	128.3	2.00	1.94	-1.69
1,560.0	17.72	230.68	1,545.0	-68.8	-126.0	140.2	2.00	1.95	-1.55
1,600.0	18.50	230.11	1,583.1	-76.8	-135.6	152.6	2.00	1.95	-1.42
1,640.0	19.28	229.58	1,620.9	-85.1	-145.5	165.6	2.00	1.95	-1.31
1,680.0	20.07	229.10	1,658.6	-93.9	-155.7	179.1	2.00	1.96	-1.21
1,720.0	20.85	228.65	1,696.1	-103.1	-166.2	193.0	2.00	1.96	-1.12
1,760.0	21.64	228.23	1,733.3	-112.7	-177.1	207.5	2.00	1.96	-1.04
1,800.0	22.42	227.84	1,770.4	-122.7	-188.2	222.5	2.00	1.97	-0.97
1,817.7	22.77	227.68	1,786.7	-127.3	-193.3	229.3	2.00	1.97	-0.93
1,840.0	22.77	227.68	1,807.3	-133.1	-199.7	238.0	0.00	0.00	0.00
1,880.0	22.77	227.68	1,844.2	-143.5	-211.1	253.4	0.00	0.00	0.00
1,920.0	22.77	227.68	1,881.1	-154.0	-222.6	268.9	0.00	0.00	0.00
1,960.0	22.77	227.68	1,918.0	-164.4	-234.0	284.4	0.00	0.00	0.00

<b>Database:</b>	Landmark	<b>Local Co-ordinate Reference:</b>	Well SRC Olson 32-3D
<b>Company:</b>	Synergy Resources	<b>TVD Reference:</b>	WELL @ 5055.0ft (Original Well Elev)
<b>Project:</b>	SEC.3-T3N-R68W	<b>MD Reference:</b>	WELL @ 5055.0ft (Original Well Elev)
<b>Site:</b>	SRC Olson 41-3 Pad Sec.3-T3N-R68W	<b>North Reference:</b>	True
<b>Well:</b>	SRC Olson 32-3D	<b>Survey Calculation Method:</b>	Minimum Curvature
<b>Wellbore:</b>	Wellbore #1		
<b>Design:</b>	Plan #1 (6-29-12)		

Planned Survey									
Measured Depth (ft)	Inclination (°)	Azimuth (°)	Vertical Depth (ft)	+N/-S (ft)	+E/-W (ft)	Vertical Section (ft)	Dogleg Rate (°/100ft)	Build Rate (°/100ft)	Turn Rate (°/100ft)
2,000.0	22.77	227.68	1,954.8	-174.8	-245.5	299.9	0.00	0.00	0.00
2,040.0	22.77	227.68	1,991.7	-185.2	-256.9	315.3	0.00	0.00	0.00
2,080.0	22.77	227.68	2,028.6	-195.7	-268.3	330.8	0.00	0.00	0.00
2,120.0	22.77	227.68	2,065.5	-206.1	-279.8	346.3	0.00	0.00	0.00
2,160.0	22.77	227.68	2,102.4	-216.5	-291.2	361.8	0.00	0.00	0.00
2,200.0	22.77	227.68	2,139.3	-226.9	-302.7	377.3	0.00	0.00	0.00
2,240.0	22.77	227.68	2,176.1	-237.4	-314.1	392.7	0.00	0.00	0.00
2,280.0	22.77	227.68	2,213.0	-247.8	-325.6	408.2	0.00	0.00	0.00
2,320.0	22.77	227.68	2,249.9	-258.2	-337.0	423.7	0.00	0.00	0.00
2,360.0	22.77	227.68	2,286.8	-268.6	-348.5	439.2	0.00	0.00	0.00
2,400.0	22.77	227.68	2,323.7	-279.0	-359.9	454.7	0.00	0.00	0.00
2,440.0	22.77	227.68	2,360.6	-289.5	-371.4	470.1	0.00	0.00	0.00
2,480.0	22.77	227.68	2,397.4	-299.9	-382.8	485.6	0.00	0.00	0.00
2,520.0	22.77	227.68	2,434.3	-310.3	-394.3	501.1	0.00	0.00	0.00
2,560.0	22.77	227.68	2,471.2	-320.7	-405.7	516.6	0.00	0.00	0.00
2,600.0	22.77	227.68	2,508.1	-331.2	-417.2	532.1	0.00	0.00	0.00
2,640.0	22.77	227.68	2,545.0	-341.6	-428.6	547.5	0.00	0.00	0.00
2,680.0	22.77	227.68	2,581.8	-352.0	-440.1	563.0	0.00	0.00	0.00
2,720.0	22.77	227.68	2,618.7	-362.4	-451.5	578.5	0.00	0.00	0.00
2,760.0	22.77	227.68	2,655.6	-372.9	-463.0	594.0	0.00	0.00	0.00
2,800.0	22.77	227.68	2,692.5	-383.3	-474.4	609.4	0.00	0.00	0.00
2,840.0	22.77	227.68	2,729.4	-393.7	-485.8	624.9	0.00	0.00	0.00
2,880.0	22.77	227.68	2,766.3	-404.1	-497.3	640.4	0.00	0.00	0.00
2,920.0	22.77	227.68	2,803.1	-414.6	-508.7	655.9	0.00	0.00	0.00
2,960.0	22.77	227.68	2,840.0	-425.0	-520.2	671.4	0.00	0.00	0.00
3,000.0	22.77	227.68	2,876.9	-435.4	-531.6	686.8	0.00	0.00	0.00
3,040.0	22.77	227.68	2,913.8	-445.8	-543.1	702.3	0.00	0.00	0.00
3,080.0	22.77	227.68	2,950.7	-456.2	-554.5	717.8	0.00	0.00	0.00
3,120.0	22.77	227.68	2,987.6	-466.7	-566.0	733.3	0.00	0.00	0.00
3,160.0	22.77	227.68	3,024.4	-477.1	-577.4	748.8	0.00	0.00	0.00
3,200.0	22.77	227.68	3,061.3	-487.5	-588.9	764.2	0.00	0.00	0.00
3,240.0	22.77	227.68	3,098.2	-497.9	-600.3	779.7	0.00	0.00	0.00
3,280.0	22.77	227.68	3,135.1	-508.4	-611.8	795.2	0.00	0.00	0.00
3,320.0	22.77	227.68	3,172.0	-518.8	-623.2	810.7	0.00	0.00	0.00
3,360.0	22.77	227.68	3,208.8	-529.2	-634.7	826.1	0.00	0.00	0.00
3,400.0	22.77	227.68	3,245.7	-539.6	-646.1	841.6	0.00	0.00	0.00
3,440.0	22.77	227.68	3,282.6	-550.1	-657.6	857.1	0.00	0.00	0.00
3,480.0	22.77	227.68	3,319.5	-560.5	-669.0	872.6	0.00	0.00	0.00
3,520.0	22.77	227.68	3,356.4	-570.9	-680.5	888.1	0.00	0.00	0.00
3,560.0	22.77	227.68	3,393.3	-581.3	-691.9	903.5	0.00	0.00	0.00
3,600.0	22.77	227.68	3,430.1	-591.8	-703.3	919.0	0.00	0.00	0.00
3,640.0	22.77	227.68	3,467.0	-602.2	-714.8	934.5	0.00	0.00	0.00
3,680.0	22.77	227.68	3,503.9	-612.6	-726.2	950.0	0.00	0.00	0.00
3,720.0	22.77	227.68	3,540.8	-623.0	-737.7	965.5	0.00	0.00	0.00
3,760.0	22.77	227.68	3,577.7	-633.4	-749.1	980.9	0.00	0.00	0.00
3,800.0	22.77	227.68	3,614.6	-643.9	-760.6	996.4	0.00	0.00	0.00
3,840.0	22.77	227.68	3,651.4	-654.3	-772.0	1,011.9	0.00	0.00	0.00
3,880.0	22.77	227.68	3,688.3	-664.7	-783.5	1,027.4	0.00	0.00	0.00
3,920.0	22.77	227.68	3,725.2	-675.1	-794.9	1,042.8	0.00	0.00	0.00
3,960.0	22.77	227.68	3,762.1	-685.6	-806.4	1,058.3	0.00	0.00	0.00
4,000.0	22.77	227.68	3,799.0	-696.0	-817.8	1,073.8	0.00	0.00	0.00
4,040.0	22.77	227.68	3,835.8	-706.4	-829.3	1,089.3	0.00	0.00	0.00
4,080.0	22.77	227.68	3,872.7	-716.8	-840.7	1,104.8	0.00	0.00	0.00
4,120.0	22.77	227.68	3,909.6	-727.3	-852.2	1,120.2	0.00	0.00	0.00

<b>Database:</b>	Landmark	<b>Local Co-ordinate Reference:</b>	Well SRC Olson 32-3D
<b>Company:</b>	Synergy Resources	<b>TVD Reference:</b>	WELL @ 5055.0ft (Original Well Elev)
<b>Project:</b>	SEC.3-T3N-R68W	<b>MD Reference:</b>	WELL @ 5055.0ft (Original Well Elev)
<b>Site:</b>	SRC Olson 41-3 Pad Sec.3-T3N-R68W	<b>North Reference:</b>	True
<b>Well:</b>	SRC Olson 32-3D	<b>Survey Calculation Method:</b>	Minimum Curvature
<b>Wellbore:</b>	Wellbore #1		
<b>Design:</b>	Plan #1 (6-29-12)		

Planned Survey									
Measured Depth (ft)	Inclination (°)	Azimuth (°)	Vertical Depth (ft)	+N/-S (ft)	+E/-W (ft)	Vertical Section (ft)	Dogleg Rate (°/100ft)	Build Rate (°/100ft)	Turn Rate (°/100ft)
4,160.0	22.77	227.68	3,946.5	-737.7	-863.6	1,135.7	0.00	0.00	0.00
4,200.0	22.77	227.68	3,983.4	-748.1	-875.1	1,151.2	0.00	0.00	0.00
4,240.0	22.77	227.68	4,020.3	-758.5	-886.5	1,166.7	0.00	0.00	0.00
4,280.0	22.77	227.68	4,057.1	-769.0	-898.0	1,182.2	0.00	0.00	0.00
4,320.0	22.77	227.68	4,094.0	-779.4	-909.4	1,197.6	0.00	0.00	0.00
4,360.0	22.77	227.68	4,130.9	-789.8	-920.8	1,213.1	0.00	0.00	0.00
4,400.0	22.77	227.68	4,167.8	-800.2	-932.3	1,228.6	0.00	0.00	0.00
4,440.0	22.77	227.68	4,204.7	-810.7	-943.7	1,244.1	0.00	0.00	0.00
4,480.0	22.77	227.68	4,241.5	-821.1	-955.2	1,259.5	0.00	0.00	0.00
4,520.0	22.77	227.68	4,278.4	-831.5	-966.6	1,275.0	0.00	0.00	0.00
4,560.0	22.77	227.68	4,315.3	-841.9	-978.1	1,290.5	0.00	0.00	0.00
4,600.0	22.77	227.68	4,352.2	-852.3	-989.5	1,306.0	0.00	0.00	0.00
4,640.0	22.77	227.68	4,389.1	-862.8	-1,001.0	1,321.5	0.00	0.00	0.00
4,680.0	22.77	227.68	4,426.0	-873.2	-1,012.4	1,336.9	0.00	0.00	0.00
4,720.0	22.77	227.68	4,462.8	-883.6	-1,023.9	1,352.4	0.00	0.00	0.00
4,760.0	22.77	227.68	4,499.7	-894.0	-1,035.3	1,367.9	0.00	0.00	0.00
4,800.0	22.77	227.68	4,536.6	-904.5	-1,046.8	1,383.4	0.00	0.00	0.00
4,840.0	22.77	227.68	4,573.5	-914.9	-1,058.2	1,398.9	0.00	0.00	0.00
4,880.0	22.77	227.68	4,610.4	-925.3	-1,069.7	1,414.3	0.00	0.00	0.00
4,920.0	22.77	227.68	4,647.3	-935.7	-1,081.1	1,429.8	0.00	0.00	0.00
4,960.0	22.77	227.68	4,684.1	-946.2	-1,092.6	1,445.3	0.00	0.00	0.00
5,000.0	22.77	227.68	4,721.0	-956.6	-1,104.0	1,460.8	0.00	0.00	0.00
5,040.0	22.77	227.68	4,757.9	-967.0	-1,115.5	1,476.2	0.00	0.00	0.00
5,076.1	22.77	227.68	4,791.2	-976.4	-1,125.8	1,490.2	0.00	0.00	0.00
5,080.0	22.69	227.68	4,794.8	-977.4	-1,126.9	1,491.7	2.00	-2.00	0.00
5,120.0	21.89	227.68	4,831.8	-987.6	-1,138.1	1,506.9	2.00	-2.00	0.00
5,160.0	21.09	227.68	4,869.0	-997.5	-1,149.0	1,521.5	2.00	-2.00	0.00
5,200.0	20.29	227.68	4,906.4	-1,007.0	-1,159.4	1,535.7	2.00	-2.00	0.00
5,240.0	19.49	227.68	4,944.0	-1,016.2	-1,169.5	1,549.3	2.00	-2.00	0.00
5,280.0	18.69	227.68	4,981.8	-1,025.0	-1,179.1	1,562.4	2.00	-2.00	0.00
5,320.0	17.89	227.68	5,019.8	-1,033.5	-1,188.4	1,574.9	2.00	-2.00	0.00
5,360.0	17.09	227.68	5,058.0	-1,041.5	-1,197.3	1,586.9	2.00	-2.00	0.00
5,400.0	16.29	227.68	5,096.3	-1,049.3	-1,205.8	1,598.4	2.00	-2.00	0.00
5,440.0	15.49	227.68	5,134.8	-1,056.7	-1,213.9	1,609.4	2.00	-2.00	0.00
5,480.0	14.69	227.68	5,173.4	-1,063.7	-1,221.6	1,619.8	2.00	-2.00	0.00
5,520.0	13.89	227.68	5,212.1	-1,070.3	-1,228.9	1,629.7	2.00	-2.00	0.00
5,560.0	13.09	227.68	5,251.0	-1,076.6	-1,235.8	1,639.0	2.00	-2.00	0.00
5,600.0	12.29	227.68	5,290.1	-1,082.5	-1,242.3	1,647.8	2.00	-2.00	0.00
5,640.0	11.49	227.68	5,329.2	-1,088.1	-1,248.4	1,656.0	2.00	-2.00	0.00
5,680.0	10.69	227.68	5,368.5	-1,093.3	-1,254.1	1,663.7	2.00	-2.00	0.00
5,720.0	9.89	227.68	5,407.8	-1,098.1	-1,259.4	1,670.9	2.00	-2.00	0.00
5,760.0	9.09	227.68	5,447.3	-1,102.5	-1,264.3	1,677.5	2.00	-2.00	0.00
5,800.0	8.29	227.68	5,486.8	-1,106.6	-1,268.7	1,683.5	2.00	-2.00	0.00
5,840.0	7.49	227.68	5,526.4	-1,110.3	-1,272.8	1,689.0	2.00	-2.00	0.00
5,880.0	6.69	227.68	5,566.1	-1,113.6	-1,276.4	1,693.9	2.00	-2.00	0.00
5,920.0	5.89	227.68	5,605.9	-1,116.6	-1,279.7	1,698.3	2.00	-2.00	0.00
5,960.0	5.09	227.68	5,645.7	-1,119.1	-1,282.5	1,702.1	2.00	-2.00	0.00
6,000.0	4.29	227.68	5,685.6	-1,121.3	-1,284.9	1,705.4	2.00	-2.00	0.00
6,040.0	3.49	227.68	5,725.5	-1,123.2	-1,286.9	1,708.1	2.00	-2.00	0.00
6,080.0	2.69	227.68	5,765.4	-1,124.6	-1,288.5	1,710.3	2.00	-2.00	0.00
6,120.0	1.89	227.68	5,805.4	-1,125.7	-1,289.7	1,711.9	2.00	-2.00	0.00
6,160.0	1.09	227.68	5,845.4	-1,126.4	-1,290.5	1,712.9	2.00	-2.00	0.00
6,200.0	0.29	227.68	5,885.4	-1,126.7	-1,290.9	1,713.4	2.00	-2.00	0.00
6,214.6	0.00	0.00	5,900.0	-1,126.7	-1,290.9	1,713.5	2.00	-2.00	0.00

<b>Database:</b>	Landmark	<b>Local Co-ordinate Reference:</b>	Well SRC Olson 32-3D
<b>Company:</b>	Synergy Resources	<b>TVD Reference:</b>	WELL @ 5055.0ft (Original Well Elev)
<b>Project:</b>	SEC.3-T3N-R68W	<b>MD Reference:</b>	WELL @ 5055.0ft (Original Well Elev)
<b>Site:</b>	SRC Olson 41-3 Pad Sec.3-T3N-R68W	<b>North Reference:</b>	True
<b>Well:</b>	SRC Olson 32-3D	<b>Survey Calculation Method:</b>	Minimum Curvature
<b>Wellbore:</b>	Wellbore #1		
<b>Design:</b>	Plan #1 (6-29-12)		

### Planned Survey

Measured Depth (ft)	Inclination (°)	Azimuth (°)	Vertical Depth (ft)	+N/-S (ft)	+E/-W (ft)	Vertical Section (ft)	Dogleg Rate (°/100ft)	Build Rate (°/100ft)	Turn Rate (°/100ft)
<b>TARGET BHL 1913'FNL &amp; 2082'FEL</b>									
6,240.0	0.00	0.00	5,925.4	-1,126.7	-1,290.9	1,713.5	0.00	0.00	0.00
6,280.0	0.00	0.00	5,965.4	-1,126.7	-1,290.9	1,713.5	0.00	0.00	0.00
6,320.0	0.00	0.00	6,005.4	-1,126.7	-1,290.9	1,713.5	0.00	0.00	0.00
6,360.0	0.00	0.00	6,045.4	-1,126.7	-1,290.9	1,713.5	0.00	0.00	0.00
6,400.0	0.00	0.00	6,085.4	-1,126.7	-1,290.9	1,713.5	0.00	0.00	0.00
6,440.0	0.00	0.00	6,125.4	-1,126.7	-1,290.9	1,713.5	0.00	0.00	0.00
6,480.0	0.00	0.00	6,165.4	-1,126.7	-1,290.9	1,713.5	0.00	0.00	0.00
6,520.0	0.00	0.00	6,205.4	-1,126.7	-1,290.9	1,713.5	0.00	0.00	0.00
6,560.0	0.00	0.00	6,245.4	-1,126.7	-1,290.9	1,713.5	0.00	0.00	0.00
6,600.0	0.00	0.00	6,285.4	-1,126.7	-1,290.9	1,713.5	0.00	0.00	0.00
6,640.0	0.00	0.00	6,325.4	-1,126.7	-1,290.9	1,713.5	0.00	0.00	0.00
6,680.0	0.00	0.00	6,365.4	-1,126.7	-1,290.9	1,713.5	0.00	0.00	0.00
6,720.0	0.00	0.00	6,405.4	-1,126.7	-1,290.9	1,713.5	0.00	0.00	0.00
6,760.0	0.00	0.00	6,445.4	-1,126.7	-1,290.9	1,713.5	0.00	0.00	0.00
6,800.0	0.00	0.00	6,485.4	-1,126.7	-1,290.9	1,713.5	0.00	0.00	0.00
6,840.0	0.00	0.00	6,525.4	-1,126.7	-1,290.9	1,713.5	0.00	0.00	0.00
6,880.0	0.00	0.00	6,565.4	-1,126.7	-1,290.9	1,713.5	0.00	0.00	0.00
6,920.0	0.00	0.00	6,605.4	-1,126.7	-1,290.9	1,713.5	0.00	0.00	0.00
6,960.0	0.00	0.00	6,645.4	-1,126.7	-1,290.9	1,713.5	0.00	0.00	0.00
7,000.0	0.00	0.00	6,685.4	-1,126.7	-1,290.9	1,713.5	0.00	0.00	0.00
7,014.6	0.00	0.00	6,700.0	-1,126.7	-1,290.9	1,713.5	0.00	0.00	0.00
<b>LEGAL BOX 400' X 400', 2038'FNL &amp; 1957'FEL - TARGET CIRCLE 1913'FNL &amp; 2082'FEL</b>									
7,040.0	0.00	0.00	6,725.4	-1,126.7	-1,290.9	1,713.5	0.00	0.00	0.00
7,080.0	0.00	0.00	6,765.4	-1,126.7	-1,290.9	1,713.5	0.00	0.00	0.00
7,120.0	0.00	0.00	6,805.4	-1,126.7	-1,290.9	1,713.5	0.00	0.00	0.00
7,160.0	0.00	0.00	6,845.4	-1,126.7	-1,290.9	1,713.5	0.00	0.00	0.00
7,200.0	0.00	0.00	6,885.4	-1,126.7	-1,290.9	1,713.5	0.00	0.00	0.00
7,240.0	0.00	0.00	6,925.4	-1,126.7	-1,290.9	1,713.5	0.00	0.00	0.00
7,280.0	0.00	0.00	6,965.4	-1,126.7	-1,290.9	1,713.5	0.00	0.00	0.00
7,320.0	0.00	0.00	7,005.4	-1,126.7	-1,290.9	1,713.5	0.00	0.00	0.00
7,360.0	0.00	0.00	7,045.4	-1,126.7	-1,290.9	1,713.5	0.00	0.00	0.00
7,400.0	0.00	0.00	7,085.4	-1,126.7	-1,290.9	1,713.5	0.00	0.00	0.00
7,440.0	0.00	0.00	7,125.4	-1,126.7	-1,290.9	1,713.5	0.00	0.00	0.00
7,480.0	0.00	0.00	7,165.4	-1,126.7	-1,290.9	1,713.5	0.00	0.00	0.00
7,520.0	0.00	0.00	7,205.4	-1,126.7	-1,290.9	1,713.5	0.00	0.00	0.00
7,560.0	0.00	0.00	7,245.4	-1,126.7	-1,290.9	1,713.5	0.00	0.00	0.00
7,600.0	0.00	0.00	7,285.4	-1,126.7	-1,290.9	1,713.5	0.00	0.00	0.00
7,640.0	0.00	0.00	7,325.4	-1,126.7	-1,290.9	1,713.5	0.00	0.00	0.00
7,680.0	0.00	0.00	7,365.4	-1,126.7	-1,290.9	1,713.5	0.00	0.00	0.00
7,720.0	0.00	0.00	7,405.4	-1,126.7	-1,290.9	1,713.5	0.00	0.00	0.00
7,760.0	0.00	0.00	7,445.4	-1,126.7	-1,290.9	1,713.5	0.00	0.00	0.00
7,800.0	0.00	0.00	7,485.4	-1,126.7	-1,290.9	1,713.5	0.00	0.00	0.00
7,840.0	0.00	0.00	7,525.4	-1,126.7	-1,290.9	1,713.5	0.00	0.00	0.00
7,880.0	0.00	0.00	7,565.4	-1,126.7	-1,290.9	1,713.5	0.00	0.00	0.00
7,920.0	0.00	0.00	7,605.4	-1,126.7	-1,290.9	1,713.5	0.00	0.00	0.00
7,960.0	0.00	0.00	7,645.4	-1,126.7	-1,290.9	1,713.5	0.00	0.00	0.00
8,000.0	0.00	0.00	7,685.4	-1,126.7	-1,290.9	1,713.5	0.00	0.00	0.00
8,040.0	0.00	0.00	7,725.4	-1,126.7	-1,290.9	1,713.5	0.00	0.00	0.00
8,080.0	0.00	0.00	7,765.4	-1,126.7	-1,290.9	1,713.5	0.00	0.00	0.00
8,120.0	0.00	0.00	7,805.4	-1,126.7	-1,290.9	1,713.5	0.00	0.00	0.00
8,160.0	0.00	0.00	7,845.4	-1,126.7	-1,290.9	1,713.5	0.00	0.00	0.00
8,200.0	0.00	0.00	7,885.4	-1,126.7	-1,290.9	1,713.5	0.00	0.00	0.00
8,240.0	0.00	0.00	7,925.4	-1,126.7	-1,290.9	1,713.5	0.00	0.00	0.00

<b>Database:</b>	Landmark	<b>Local Co-ordinate Reference:</b>	Well SRC Olson 32-3D
<b>Company:</b>	Synergy Resources	<b>TVD Reference:</b>	WELL @ 5055.0ft (Original Well Elev)
<b>Project:</b>	SEC.3-T3N-R68W	<b>MD Reference:</b>	WELL @ 5055.0ft (Original Well Elev)
<b>Site:</b>	SRC Olson 41-3 Pad Sec.3-T3N-R68W	<b>North Reference:</b>	True
<b>Well:</b>	SRC Olson 32-3D	<b>Survey Calculation Method:</b>	Minimum Curvature
<b>Wellbore:</b>	Wellbore #1		
<b>Design:</b>	Plan #1 (6-29-12)		

Planned Survey										
Measured Depth (ft)	Inclination (°)	Azimuth (°)	Vertical Depth (ft)	+N/-S (ft)	+E/-W (ft)	Vertical Section (ft)	Dogleg Rate (°/100ft)	Build Rate (°/100ft)	Turn Rate (°/100ft)	
8,280.0	0.00	0.00	7,965.4	-1,126.7	-1,290.9	1,713.5	0.00	0.00	0.00	
8,320.0	0.00	0.00	8,005.4	-1,126.7	-1,290.9	1,713.5	0.00	0.00	0.00	
8,339.6	0.00	0.00	8,025.0	-1,126.7	-1,290.9	1,713.5	0.00	0.00	0.00	

Targets										
Target Name	Dip Angle (°)	Dip Dir. (°)	TVD (ft)	+N/-S (ft)	+E/-W (ft)	Northing (ft)	Easting (ft)	Latitude	Longitude	
- hit/miss target										
- Shape										
TARGET BHL 1913'F	0.00	0.00	5,900.0	-1,126.7	-1,290.9	1,337,010.03	3,143,088.56	40.257356	-104.987312	
- plan hits target center										
- Point										
LEGAL BOX 400' X 400'	0.00	0.00	6,700.0	-1,251.7	-1,165.9	1,336,885.81	3,143,214.26	40.257013	-104.986864	
- plan misses target center by 176.7ft at 7014.6ft MD (6700.0 TVD, -1126.7 N, -1290.9 E)										
- Rectangle (sides W400.0 H400.0 D1,325.0)										
TARGET CIRCLE 191	0.00	0.00	6,700.0	-1,126.7	-1,290.9	1,337,010.03	3,143,088.56	40.257356	-104.987312	
- plan hits target center										
- Circle (radius 75.0)										

Casing Points						
Measured Depth (ft)	Vertical Depth (ft)	Name	Casing Diameter (")	Hole Diameter (")		
971.0	970.0	8 5/8"	8-5/8	12-1/4		





## **Synergy Resources**

**SEC.3-T3N-R68W**

**SRC Olson 41-3 Pad Sec.3-T3N-R68W**

**SRC Olson 32-3D**

**Wellbore #1**

**Plan #1 (6-29-12)**

## **Anticollision Report**

**03 July, 2012**

<b>Company:</b>	Synergy Resources	<b>Local Co-ordinate Reference:</b>	Well SRC Olson 32-3D
<b>Project:</b>	SEC.3-T3N-R68W	<b>TVD Reference:</b>	WELL @ 5055.0ft (Original Well Elev)
<b>Reference Site:</b>	SRC Olson 41-3 Pad Sec.3-T3N-R68W	<b>MD Reference:</b>	WELL @ 5055.0ft (Original Well Elev)
<b>Site Error:</b>	0.0ft	<b>North Reference:</b>	True
<b>Reference Well:</b>	SRC Olson 32-3D	<b>Survey Calculation Method:</b>	Minimum Curvature
<b>Well Error:</b>	0.0ft	<b>Output errors are at</b>	2.00 sigma
<b>Reference Wellbore</b>	Wellbore #1	<b>Database:</b>	Landmark
<b>Reference Design:</b>	Plan #1 (6-29-12)	<b>Offset TVD Reference:</b>	Offset Datum

<b>Reference</b>	Plan #1 (6-29-12)		
<b>Filter type:</b>	NO GLOBAL FILTER: Using user defined selection & filtering criteria		
<b>Interpolation Method:</b>	Stations	<b>Error Model:</b>	ISCWSA
<b>Depth Range:</b>	Unlimited	<b>Scan Method:</b>	Closest Approach 3D
<b>Results Limited by:</b>	Maximum center-center distance of 10,000.0ft	<b>Error Surface:</b>	Elliptical Conic
<b>Warning Levels Evaluated at:</b>	2.00 Sigma		

<b>Survey Tool Program</b>	<b>Date</b> 7/3/2012			
<b>From (ft)</b>	<b>To (ft)</b>	<b>Survey (Wellbore)</b>	<b>Tool Name</b>	<b>Description</b>
0.0	8,339.6	Plan #1 (6-29-12) (Wellbore #1)	MWD	MWD - Standard

<b>Summary</b>						
<b>Site Name</b>	<b>Reference Measured Depth (ft)</b>	<b>Offset Measured Depth (ft)</b>	<b>Distance Between Centres (ft)</b>	<b>Distance Between Ellipses (ft)</b>	<b>Separation Factor</b>	<b>Warning</b>
<b>Offset Well - Wellbore - Design</b>						
SRC Olson 41-3 Pad Sec.3-T3N-R68W						
SRC Olson 31-3D - Wellbore #1 - Plan #1 (6-29-12)	501.6	501.2	25.6	23.6	12.602	CC, ES
SRC Olson 31-3D - Wellbore #1 - Plan #1 (6-29-12)	600.0	598.6	28.3	25.8	11.333	SF
SRC Olson 3CD - Wellbore #1 - Plan #1 (7-1-12)	200.0	200.0	15.0	14.3	22.220	CC, ES
SRC Olson 3CD - Wellbore #1 - Plan #1 (7-1-12)	2,000.0	1,979.3	65.6	52.0	4.816	SF
SRC Olson 41-3 (Vert.) - Wellbore #1 - Plan #1 (6-29-12)	600.0	599.0	44.9	42.4	18.173	CC, ES
SRC Olson 41-3 (Vert.) - Wellbore #1 - Plan #1 (6-29-12)	850.0	848.7	52.0	48.5	14.618	SF
SRC Olson 42-3D - Wellbore #1 - Plan #1 (6-29-12)	288.1	287.1	15.0	14.0	14.277	CC
SRC Olson 42-3D - Wellbore #1 - Plan #1 (6-29-12)	300.0	299.0	15.0	13.9	13.613	ES
SRC Olson 42-3D - Wellbore #1 - Plan #1 (6-29-12)	500.0	498.4	20.3	18.3	10.148	SF

Offset Design      SRC Olson 41-3 Pad Sec.3-T3N-R68W - SRC Olson 31-3D - Wellbore #1 - Plan #1 (6-29-12)													Offset Site Error:	0.0 ft
Survey Program: 0-MWD													Offset Well Error:	0.0 ft
Reference		Offset		Semi Major Axis			Distance							
Measured Depth (ft)	Vertical Depth (ft)	Measured Depth (ft)	Vertical Depth (ft)	Reference (ft)	Offset (ft)	Highside Toolface (°)	Offset Wellbore Centre +N/-S (ft)	+E/-W (ft)	Between Centres (ft)	Between Ellipses (ft)	Minimum Separation (ft)	Separation Factor	Warning	
0.0	0.0	0.0	0.0	0.0	0.0	35.78	24.4	17.6	30.1					
100.0	100.0	99.0	99.0	0.1	0.1	35.78	24.4	17.6	30.1	29.9	0.22	134.479		
200.0	200.0	199.0	199.0	0.3	0.3	35.78	24.4	17.6	30.1	29.4	0.67	44.752		
300.0	300.0	299.5	299.5	0.6	0.6	32.89	24.5	15.9	29.2	28.1	1.11	26.208		
400.0	400.0	399.8	399.6	0.8	0.8	23.14	24.9	10.6	27.1	25.5	1.56	17.302		
500.0	500.0	499.6	499.0	1.0	1.0	4.43	25.5	2.0	25.6	23.6	2.02	12.648		
501.6	501.6	501.2	500.6	1.0	1.0	4.05	25.5	1.8	25.6	23.6	2.03	12.602	CC, ES	
600.0	600.0	598.6	597.3	1.2	1.3	-20.85	26.4	-10.0	28.3	25.8	2.49	11.333	SF	
700.0	700.0	697.0	694.5	1.4	1.6	49.17	27.4	-25.3	36.4	33.4	3.02	12.061		
800.0	799.8	794.9	790.7	1.7	2.0	37.61	28.7	-43.8	47.4	44.0	3.48	13.620		
850.0	849.7	843.7	838.3	1.8	2.2	33.77	29.5	-54.3	53.4	49.7	3.72	14.368		
900.0	899.5	892.4	885.7	1.9	2.5	38.86	30.3	-65.5	60.0	56.0	3.96	15.162		
1,000.0	998.8	989.6	979.7	2.1	2.9	46.78	32.0	-90.2	75.1	70.6	4.45	16.852		
1,100.0	1,097.8	1,088.4	1,075.0	2.4	3.5	53.45	33.9	-116.3	90.5	85.5	5.01	18.071		
1,200.0	1,196.3	1,187.3	1,170.3	2.7	4.0	59.70	35.7	-142.3	105.4	99.7	5.65	18.662		
1,300.0	1,294.2	1,286.0	1,265.5	3.0	4.6	65.78	37.6	-168.4	119.9	113.5	6.39	18.760		
1,400.0	1,391.4	1,384.5	1,360.5	3.5	5.1	71.81	39.4	-194.4	134.6	127.3	7.27	18.517		
1,500.0	1,487.7	1,482.7	1,455.3	3.9	5.6	77.82	41.2	-220.3	149.8	141.6	8.28	18.100		

CC - Min centre to center distance or convergent point, SF - min separation factor, ES - min ellipse separation

SRC Olson 41-3 Pad Sec.3-T3N-R68W - SRC Olson 31-3D - Wellbore #1 - Plan #1 (6-29-12)													Offset Site Error:	0.0 ft
Survey Program: 0-MWD													Offset Well Error:	0.0 ft
Reference		Offset		Semi Major Axis			Distance							Warning
Measured Depth (ft)	Vertical Depth (ft)	Measured Depth (ft)	Vertical Depth (ft)	Reference (ft)	Offset (ft)	Highside Toolface (°)	Offset Wellbore Centre +N/-S (ft)	+E/-W (ft)	Between Centres (ft)	Between Ellipses (ft)	Minimum Separation (ft)	Separation Factor		
1,600.0	1,583.1	1,580.5	1,549.5	4.5	6.2	83.76	43.1	-246.0	166.2	156.8	9.41	17.653		
1,700.0	1,677.3	1,677.7	1,643.3	5.1	6.7	89.56	44.9	-271.7	184.1	173.5	10.65	17.287		
1,800.0	1,770.4	1,774.2	1,736.3	5.7	7.3	95.14	46.7	-297.1	204.1	192.1	11.96	17.069		
1,817.7	1,786.7	1,791.2	1,752.7	5.9	7.4	96.10	47.0	-301.6	207.9	195.7	12.19	17.048		
1,900.0	1,862.6	1,870.2	1,828.9	6.5	7.8	99.87	48.5	-322.5	226.1	212.8	13.31	16.987		
2,000.0	1,954.8	1,966.2	1,921.5	7.2	8.4	103.72	50.3	-347.8	249.4	234.7	14.64	17.036		
2,100.0	2,047.1	2,062.2	2,014.1	8.0	8.9	106.91	52.1	-373.1	273.5	257.6	15.93	17.169		
2,200.0	2,139.3	2,158.2	2,106.6	8.7	9.5	109.59	53.9	-398.4	298.3	281.1	17.19	17.351		
2,300.0	2,231.5	2,254.2	2,199.2	9.5	10.0	111.86	55.7	-423.7	323.7	305.3	18.44	17.558		
2,400.0	2,323.7	2,350.1	2,291.8	10.3	10.5	113.80	57.4	-449.1	349.5	329.8	19.66	17.777		
2,500.0	2,415.9	2,446.1	2,384.3	11.1	11.1	115.47	59.2	-474.4	375.6	354.7	20.87	17.998		
2,600.0	2,508.1	2,542.1	2,476.9	11.8	11.6	116.93	61.0	-499.7	401.9	379.9	22.06	18.218		
2,700.0	2,600.3	2,638.1	2,569.5	12.6	12.2	118.21	62.8	-525.0	428.5	405.2	23.25	18.431		
2,800.0	2,692.5	2,734.1	2,662.1	13.4	12.7	119.34	64.6	-550.3	455.2	430.8	24.43	18.638		
2,900.0	2,784.7	2,830.1	2,754.6	14.2	13.3	120.35	66.4	-575.6	482.1	456.5	25.60	18.836		
3,000.0	2,876.9	2,926.1	2,847.2	15.0	13.8	121.25	68.2	-601.0	509.2	482.4	26.76	19.025		
3,100.0	2,969.1	3,022.0	2,939.8	15.8	14.4	122.06	70.0	-626.3	536.3	508.4	27.92	19.205		
3,200.0	3,061.3	3,118.0	3,032.3	16.6	14.9	122.79	71.8	-651.6	563.5	534.4	29.08	19.377		
3,300.0	3,153.5	3,214.0	3,124.9	17.4	15.5	123.46	73.6	-676.9	590.8	560.6	30.24	19.540		
3,400.0	3,245.7	3,310.0	3,217.5	18.2	16.0	124.06	75.4	-702.2	618.2	586.8	31.39	19.695		
3,500.0	3,337.9	3,406.0	3,310.0	19.0	16.5	124.62	77.2	-727.5	645.6	613.1	32.54	19.842		
3,600.0	3,430.1	3,502.0	3,402.6	19.8	17.1	125.13	79.0	-752.9	673.1	639.4	33.68	19.982		
3,700.0	3,522.3	3,598.0	3,495.2	20.6	17.6	125.60	80.8	-778.2	700.6	665.8	34.83	20.115		
3,800.0	3,614.6	3,693.9	3,587.7	21.4	18.2	126.03	82.5	-803.5	728.1	692.2	35.97	20.242		
3,900.0	3,706.8	3,789.9	3,680.3	22.2	18.7	126.43	84.3	-828.8	755.7	718.6	37.11	20.362		
4,000.0	3,799.0	3,885.9	3,772.9	23.0	19.3	126.81	86.1	-854.1	783.4	745.1	38.26	20.477		
4,100.0	3,891.2	3,981.9	3,865.5	23.8	19.8	127.16	87.9	-879.5	811.0	771.6	39.40	20.587		
4,200.0	3,983.4	4,077.9	3,958.0	24.6	20.4	127.49	89.7	-904.8	838.7	798.2	40.54	20.691		
4,300.0	4,075.6	4,173.9	4,050.6	25.4	20.9	127.79	91.5	-930.1	866.4	824.7	41.67	20.790		
4,400.0	4,167.8	4,269.9	4,143.2	26.2	21.5	128.08	93.3	-955.4	894.1	851.3	42.81	20.886		
4,500.0	4,260.0	4,365.8	4,235.7	27.0	22.0	128.35	95.1	-980.7	921.9	877.9	43.95	20.977		
4,600.0	4,352.2	4,461.8	4,328.3	27.8	22.6	128.60	96.9	-1,006.0	949.7	904.6	45.08	21.064		
4,700.0	4,444.4	4,557.8	4,420.9	28.6	23.1	128.84	98.7	-1,031.4	977.4	931.2	46.22	21.147		
4,800.0	4,536.6	4,653.8	4,513.4	29.4	23.7	129.07	100.5	-1,056.7	1,005.2	957.9	47.36	21.227		
4,900.0	4,628.8	4,751.7	4,608.1	30.2	24.1	129.33	102.2	-1,081.7	1,033.0	984.6	48.40	21.344		
5,000.0	4,721.0	4,850.3	4,704.1	31.0	24.5	129.76	103.8	-1,103.8	1,060.5	1,011.2	49.31	21.508		
5,076.1	4,791.2	4,925.0	4,777.4	31.6	24.7	130.20	104.8	-1,118.4	1,081.4	1,031.4	49.94	21.651		
5,100.0	4,813.3	4,948.4	4,800.4	31.7	24.8	130.45	105.1	-1,122.6	1,087.8	1,037.7	50.13	21.701		
5,200.0	4,906.4	5,046.5	4,897.3	32.3	25.1	131.48	106.2	-1,138.0	1,113.5	1,062.7	50.77	21.932		
5,300.0	5,000.8	5,144.8	4,994.8	32.8	25.3	132.48	107.1	-1,150.1	1,136.9	1,085.6	51.32	22.153		
5,400.0	5,096.3	5,243.1	5,092.8	33.3	25.5	133.44	107.7	-1,158.9	1,157.9	1,106.2	51.77	22.366		
5,500.0	5,192.7	5,341.4	5,190.9	33.7	25.7	134.39	108.1	-1,164.3	1,176.7	1,124.6	52.12	22.576		
5,600.0	5,290.1	5,439.6	5,289.0	34.1	25.8	135.31	108.2	-1,166.3	1,193.2	1,140.8	52.38	22.780		
5,700.0	5,388.1	5,537.7	5,387.1	34.4	25.9	136.15	108.2	-1,166.3	1,207.3	1,154.8	52.57	22.965		
5,800.0	5,486.8	5,636.3	5,485.8	34.7	26.0	136.84	108.2	-1,166.3	1,219.1	1,166.4	52.76	23.108		
5,900.0	5,586.0	5,735.5	5,585.0	35.0	26.1	137.37	108.2	-1,166.3	1,228.5	1,175.5	52.93	23.210		
6,000.0	5,685.6	5,835.1	5,684.6	35.2	26.2	137.75	108.2	-1,166.3	1,235.3	1,182.2	53.09	23.269		
6,100.0	5,785.4	5,934.9	5,784.4	35.3	26.3	137.98	108.2	-1,166.3	1,239.5	1,186.3	53.24	23.284		
6,200.0	5,885.4	6,034.9	5,884.4	35.4	26.4	138.08	108.2	-1,166.3	1,241.2	1,187.8	53.37	23.255		
6,214.6	5,900.0	6,049.5	5,899.0	35.4	26.4	5.76	108.2	-1,166.3	1,241.2	1,187.9	53.40	23.246		
6,300.0	5,985.4	6,134.9	5,984.4	35.5	26.5	5.76	108.2	-1,166.3	1,241.2	1,187.7	53.56	23.173		
6,400.0	6,085.4	6,234.9	6,084.4	35.5	26.6	5.76	108.2	-1,166.3	1,241.2	1,187.5	53.77	23.086		

<b>Company:</b>	Synergy Resources	<b>Local Co-ordinate Reference:</b>	Well SRC Olson 32-3D
<b>Project:</b>	SEC.3-T3N-R68W	<b>TVD Reference:</b>	WELL @ 5055.0ft (Original Well Elev)
<b>Reference Site:</b>	SRC Olson 41-3 Pad Sec.3-T3N-R68W	<b>MD Reference:</b>	WELL @ 5055.0ft (Original Well Elev)
<b>Site Error:</b>	0.0ft	<b>North Reference:</b>	True
<b>Reference Well:</b>	SRC Olson 32-3D	<b>Survey Calculation Method:</b>	Minimum Curvature
<b>Well Error:</b>	0.0ft	<b>Output errors are at</b>	2.00 sigma
<b>Reference Wellbore</b>	Wellbore #1	<b>Database:</b>	Landmark
<b>Reference Design:</b>	Plan #1 (6-29-12)	<b>Offset TVD Reference:</b>	Offset Datum

Offset Design												Offset Site Error:	0.0 ft
SRC Olson 41-3 Pad Sec.3-T3N-R68W - SRC Olson 31-3D - Wellbore #1 - Plan #1 (6-29-12)												Offset Well Error:	0.0 ft
Survey Program: 0-MWD													
Reference		Offset		Semi Major Axis			Distance						
Measured Depth (ft)	Vertical Depth (ft)	Measured Depth (ft)	Vertical Depth (ft)	Reference (ft)	Offset (ft)	Highside Toolface (°)	Offset Wellbore Centre +N/-S (ft)	+E/-W (ft)	Between Centres (ft)	Between Ellipses (ft)	Minimum Separation (ft)	Separation Factor	Warning
6,500.0	6,185.4	6,334.9	6,184.4	35.6	26.7	5.76	108.2	-1,166.3	1,241.2	1,187.3	53.97	22.998	
6,600.0	6,285.4	6,434.9	6,284.4	35.7	26.8	5.76	108.2	-1,166.3	1,241.2	1,187.1	54.18	22.910	
6,700.0	6,385.4	6,534.9	6,384.4	35.8	26.9	5.76	108.2	-1,166.3	1,241.2	1,186.9	54.39	22.821	
6,800.0	6,485.4	6,634.9	6,484.4	35.8	27.0	5.76	108.2	-1,166.3	1,241.2	1,186.6	54.60	22.732	
6,900.0	6,585.4	6,734.9	6,584.4	35.9	27.1	5.76	108.2	-1,166.3	1,241.2	1,186.4	54.82	22.642	
7,000.0	6,685.4	6,834.9	6,684.4	36.0	27.3	5.76	108.2	-1,166.3	1,241.2	1,186.2	55.04	22.552	
7,100.0	6,785.4	6,934.9	6,784.4	36.1	27.4	5.76	108.2	-1,166.3	1,241.2	1,186.0	55.26	22.462	
7,200.0	6,885.4	7,034.9	6,884.4	36.1	27.5	5.76	108.2	-1,166.3	1,241.2	1,185.8	55.49	22.371	
7,300.0	6,985.4	7,134.9	6,984.4	36.2	27.6	5.76	108.2	-1,166.3	1,241.2	1,185.5	55.71	22.279	
7,400.0	7,085.4	7,234.9	7,084.4	36.3	27.7	5.76	108.2	-1,166.3	1,241.2	1,185.3	55.94	22.188	
7,500.0	7,185.4	7,334.9	7,184.4	36.4	27.8	5.76	108.2	-1,166.3	1,241.2	1,185.1	56.18	22.096	
7,600.0	7,285.4	7,434.9	7,284.4	36.5	28.0	5.76	108.2	-1,166.3	1,241.2	1,184.8	56.41	22.004	
7,700.0	7,385.4	7,534.9	7,384.4	36.6	28.1	5.76	108.2	-1,166.3	1,241.2	1,184.6	56.65	21.911	
7,800.0	7,485.4	7,634.9	7,484.4	36.7	28.2	5.76	108.2	-1,166.3	1,241.2	1,184.4	56.89	21.819	
7,900.0	7,585.4	7,734.9	7,584.4	36.7	28.4	5.76	108.2	-1,166.3	1,241.2	1,184.1	57.13	21.726	
8,000.0	7,685.4	7,834.9	7,684.4	36.8	28.5	5.76	108.2	-1,166.3	1,241.2	1,183.9	57.38	21.633	
8,100.0	7,785.4	7,934.9	7,784.4	36.9	28.6	5.76	108.2	-1,166.3	1,241.2	1,183.6	57.63	21.540	
8,200.0	7,885.4	8,034.9	7,884.4	37.0	28.7	5.76	108.2	-1,166.3	1,241.2	1,183.4	57.88	21.446	
8,300.0	7,985.4	8,134.9	7,984.4	37.1	28.9	5.76	108.2	-1,166.3	1,241.2	1,183.1	58.13	21.353	
8,339.6	8,025.0	8,174.5	8,024.0	37.2	28.9	5.76	108.2	-1,166.3	1,241.2	1,183.0	58.23	21.316	

<b>Company:</b>	Synergy Resources	<b>Local Co-ordinate Reference:</b>	Well SRC Olson 32-3D
<b>Project:</b>	SEC.3-T3N-R68W	<b>TVD Reference:</b>	WELL @ 5055.0ft (Original Well Elev)
<b>Reference Site:</b>	SRC Olson 41-3 Pad Sec.3-T3N-R68W	<b>MD Reference:</b>	WELL @ 5055.0ft (Original Well Elev)
<b>Site Error:</b>	0.0ft	<b>North Reference:</b>	True
<b>Reference Well:</b>	SRC Olson 32-3D	<b>Survey Calculation Method:</b>	Minimum Curvature
<b>Well Error:</b>	0.0ft	<b>Output errors are at</b>	2.00 sigma
<b>Reference Wellbore</b>	Wellbore #1	<b>Database:</b>	Landmark
<b>Reference Design:</b>	Plan #1 (6-29-12)	<b>Offset TVD Reference:</b>	Offset Datum

Offset Design													Offset Site Error:	0.0 ft
Survey Program: 0-MWD													Offset Well Error:	0.0 ft
Reference		Offset		Semi Major Axis			Distance							Warning
Measured Depth (ft)	Vertical Depth (ft)	Measured Depth (ft)	Vertical Depth (ft)	Reference (ft)	Offset (ft)	Highside Toolface (°)	Offset Wellbore Centre +N/-S (ft)	+E/-W (ft)	Between Centres (ft)	Between Ellipses (ft)	Minimum Separation (ft)	Separation Factor		
0.0	0.0	0.0	0.0	0.0	0.0	-143.41	-12.0	-8.9	15.0	15.0	0.00	N/A		
100.0	100.0	100.0	100.0	0.1	0.1	-143.41	-12.0	-8.9	15.0	14.8	0.22	66.661		
200.0	200.0	200.0	200.0	0.3	0.3	-143.41	-12.0	-8.9	15.0	14.3	0.67	22.220 CC, ES		
300.0	300.0	299.4	299.4	0.6	0.5	-142.80	-13.3	-10.1	16.7	15.6	1.10	15.156		
400.0	400.0	398.6	398.5	0.8	0.8	-141.56	-17.1	-13.6	21.9	20.4	1.54	14.240		
500.0	500.0	497.4	496.8	1.0	1.0	-140.43	-23.4	-19.3	30.5	28.5	2.01	15.220		
600.0	600.0	595.4	594.1	1.2	1.3	-139.62	-32.1	-27.3	42.6	40.1	2.51	16.946		
700.0	700.0	692.7	690.3	1.4	1.6	-50.17	-43.2	-37.5	56.9	54.0	2.89	19.691		
800.0	799.8	791.3	787.4	1.7	2.0	-52.51	-56.0	-49.2	71.2	67.9	3.33	21.371		
850.0	849.7	840.9	836.1	1.8	2.2	-54.12	-62.4	-55.0	77.6	74.1	3.56	21.808		
900.0	899.5	890.5	885.0	1.9	2.4	-47.88	-68.8	-60.9	83.5	79.7	3.79	22.042		
1,000.0	998.8	989.9	982.9	2.1	2.7	-39.86	-81.8	-72.7	92.7	88.4	4.25	21.785		
1,100.0	1,097.8	1,089.6	1,081.0	2.4	3.1	-35.72	-94.7	-84.6	98.7	94.0	4.76	20.751		
1,200.0	1,196.3	1,189.5	1,179.3	2.7	3.5	-33.97	-107.6	-96.4	101.5	96.2	5.30	19.166		
1,300.0	1,294.2	1,289.3	1,277.6	3.0	3.9	-33.95	-120.6	-108.3	101.2	95.3	5.89	17.196		
1,400.0	1,391.4	1,389.0	1,375.7	3.5	4.3	-35.46	-133.5	-120.1	97.9	91.4	6.55	14.951		
1,500.0	1,487.7	1,488.5	1,473.6	3.9	4.7	-38.68	-146.5	-131.9	92.0	84.6	7.33	12.544		
1,600.0	1,583.1	1,587.6	1,571.2	4.5	5.1	-44.15	-159.3	-143.7	83.8	75.5	8.30	10.097		
1,700.0	1,677.3	1,686.2	1,668.3	5.1	5.5	-52.92	-172.1	-155.4	74.4	64.9	9.56	7.788		
1,800.0	1,770.4	1,784.2	1,764.8	5.7	5.9	-66.53	-184.8	-167.1	65.9	54.7	11.16	5.903		
1,817.7	1,786.7	1,801.5	1,781.8	5.9	6.0	-69.54	-187.1	-169.1	64.7	53.2	11.46	5.643		
1,900.0	1,862.6	1,881.8	1,860.8	6.5	6.3	-85.43	-197.5	-178.7	61.9	49.2	12.73	4.865		
1,902.0	1,864.5	1,883.7	1,862.7	6.5	6.3	-85.82	-197.7	-178.9	61.9	49.2	12.76	4.855		
2,000.0	1,954.8	1,979.3	1,956.8	7.2	6.7	-104.59	-210.2	-190.2	65.6	52.0	13.62	4.816 SF		
2,100.0	2,047.1	2,076.9	2,052.9	8.0	7.1	-120.29	-222.8	-201.8	75.7	61.9	13.85	5.469		
2,200.0	2,139.3	2,174.4	2,148.9	8.7	7.5	-131.76	-235.5	-213.4	90.2	76.4	13.85	6.512		
2,300.0	2,231.5	2,272.0	2,244.9	9.5	7.9	-139.89	-248.1	-225.0	107.3	93.4	13.89	7.720		
2,400.0	2,323.7	2,369.5	2,341.0	10.3	8.3	-145.74	-260.8	-236.6	125.9	111.8	14.04	8.963		
2,500.0	2,415.9	2,467.1	2,437.0	11.1	8.7	-150.07	-273.4	-248.2	145.4	131.2	14.29	10.175		
2,600.0	2,508.1	2,564.6	2,533.0	11.8	9.1	-153.37	-286.1	-259.7	165.6	151.0	14.62	11.326		
2,700.0	2,600.3	2,662.2	2,629.0	12.6	9.5	-155.95	-298.8	-271.3	186.2	171.2	15.01	12.406		
2,800.0	2,692.5	2,759.7	2,725.1	13.4	9.9	-158.02	-311.4	-282.9	207.1	191.7	15.44	13.411		
2,900.0	2,784.7	2,857.3	2,821.1	14.2	10.3	-159.71	-324.1	-294.5	228.2	212.3	15.91	14.345		
3,000.0	2,876.9	2,954.8	2,917.1	15.0	10.7	-161.11	-336.7	-306.1	249.4	233.0	16.40	15.213		
3,100.0	2,969.1	3,052.4	3,013.1	15.8	11.1	-162.29	-349.4	-317.7	270.8	253.9	16.91	16.018		
3,200.0	3,061.3	3,149.9	3,109.2	16.6	11.5	-163.30	-362.1	-329.3	292.3	274.9	17.43	16.768		
3,300.0	3,153.5	3,247.5	3,205.2	17.4	11.9	-164.17	-374.7	-340.8	313.8	295.9	17.97	17.466		
3,400.0	3,245.7	3,345.0	3,301.2	18.2	12.3	-164.93	-387.4	-352.4	335.4	316.9	18.51	18.117		
3,500.0	3,337.9	3,442.6	3,397.3	19.0	12.7	-165.60	-400.0	-364.0	357.1	338.0	19.07	18.726		
3,600.0	3,430.1	3,540.1	3,493.3	19.8	13.1	-166.19	-412.7	-375.6	378.8	359.1	19.63	19.296		
3,700.0	3,522.3	3,637.7	3,589.3	20.6	13.5	-166.72	-425.4	-387.2	400.5	380.3	20.20	19.830		
3,800.0	3,614.6	3,735.2	3,685.3	21.4	13.9	-167.19	-438.0	-398.8	422.3	401.5	20.77	20.332		
3,900.0	3,706.8	3,832.7	3,781.4	22.2	14.3	-167.61	-450.7	-410.3	444.0	422.7	21.34	20.804		
4,000.0	3,799.0	3,930.3	3,877.4	23.0	14.7	-168.00	-463.3	-421.9	465.8	443.9	21.92	21.249		
4,100.0	3,891.2	4,027.8	3,973.4	23.8	15.1	-168.35	-476.0	-433.5	487.7	465.2	22.50	21.670		
4,200.0	3,983.4	4,125.4	4,069.4	24.6	15.5	-168.68	-488.6	-445.1	509.5	486.4	23.09	22.067		
4,300.0	4,075.6	4,222.9	4,165.5	25.4	15.9	-168.97	-501.3	-456.7	531.4	507.7	23.68	22.443		
4,400.0	4,167.8	4,320.5	4,261.5	26.2	16.3	-169.24	-514.0	-468.3	553.2	529.0	24.26	22.799		
4,500.0	4,260.0	4,418.0	4,357.5	27.0	16.7	-169.49	-526.6	-479.9	575.1	550.2	24.85	23.138		
4,600.0	4,352.2	4,500.0	4,438.3	27.8	17.0	-169.70	-537.0	-489.4	597.5	572.1	25.40	23.525		
4,700.0	4,444.4	4,586.1	4,523.5	28.6	17.2	-169.96	-546.3	-497.9	622.3	596.4	25.89	24.030		
4,800.0	4,536.6	4,665.2	4,602.0	29.4	17.4	-170.23	-553.2	-504.2	649.7	623.3	26.37	24.640		

CC - Min centre to center distance or convergent point, SF - min separation factor, ES - min ellipse separation

<b>Company:</b>	Synergy Resources	<b>Local Co-ordinate Reference:</b>	Well SRC Olson 32-3D
<b>Project:</b>	SEC.3-T3N-R68W	<b>TVD Reference:</b>	WELL @ 5055.0ft (Original Well Elev)
<b>Reference Site:</b>	SRC Olson 41-3 Pad Sec.3-T3N-R68W	<b>MD Reference:</b>	WELL @ 5055.0ft (Original Well Elev)
<b>Site Error:</b>	0.0ft	<b>North Reference:</b>	True
<b>Reference Well:</b>	SRC Olson 32-3D	<b>Survey Calculation Method:</b>	Minimum Curvature
<b>Well Error:</b>	0.0ft	<b>Output errors are at</b>	2.00 sigma
<b>Reference Wellbore</b>	Wellbore #1	<b>Database:</b>	Landmark
<b>Reference Design:</b>	Plan #1 (6-29-12)	<b>Offset TVD Reference:</b>	Offset Datum

Offset Design												SRC Olson 41-3 Pad Sec.3-T3N-R68W - SRC Olson 3CD - Wellbore #1 - Plan #1 (7-1-12)		Offset Site Error: 0.0 ft	
Survey Program: 0-MWD												Offset Well Error: 0.0 ft			
Reference		Offset		Semi Major Axis			Distance							Warning	
Measured Depth (ft)	Vertical Depth (ft)	Measured Depth (ft)	Vertical Depth (ft)	Reference (ft)	Offset (ft)	Highside Toolface (°)	Offset Wellbore Centre +N/-S (ft)	+E/-W (ft)	Between Centres (ft)	Between Ellipses (ft)	Minimum Separation (ft)	Separation Factor			
4,900.0	4,628.8	4,743.1	4,679.5	30.2	17.5	-170.53	-558.4	-508.9	679.7	652.8	26.82	25.339			
5,000.0	4,721.0	4,819.5	4,755.8	31.0	17.7	-170.85	-562.0	-512.2	712.1	684.9	27.27	26.118			
5,076.1	4,791.2	4,876.7	4,813.0	31.6	17.8	-171.09	-563.7	-513.8	738.5	710.9	27.60	26.762			
5,100.0	4,813.3	4,900.0	4,836.2	31.7	17.8	-171.22	-564.1	-514.2	747.0	719.3	27.72	26.952			
5,200.0	4,906.4	4,970.2	4,906.4	32.3	17.9	-171.62	-564.7	-514.7	781.9	753.7	28.16	27.763			
5,300.0	5,000.8	5,064.6	5,000.8	32.8	18.0	-172.06	-564.7	-514.7	814.6	786.1	28.59	28.492			
5,400.0	5,096.3	5,160.0	5,096.3	33.3	18.1	-172.42	-564.7	-514.7	844.1	815.1	28.99	29.117			
5,500.0	5,192.7	5,256.5	5,192.7	33.7	18.2	-172.71	-564.7	-514.7	870.3	840.9	29.36	29.641			
5,600.0	5,290.1	5,353.8	5,290.1	34.1	18.3	-172.96	-564.7	-514.7	893.1	863.4	29.70	30.073			
5,700.0	5,388.1	5,451.9	5,388.1	34.4	18.4	-173.16	-564.7	-514.7	912.6	882.6	30.00	30.418			
5,800.0	5,486.8	5,550.6	5,486.8	34.7	18.5	-173.31	-564.7	-514.7	928.6	898.3	30.27	30.681			
5,900.0	5,586.0	5,649.7	5,586.0	35.0	18.7	-173.43	-564.7	-514.7	941.2	910.7	30.49	30.866			
6,000.0	5,685.6	5,749.3	5,685.6	35.2	18.8	-173.52	-564.7	-514.7	950.4	919.7	30.68	30.976			
6,100.0	5,785.4	5,849.1	5,785.4	35.3	18.9	-173.57	-564.7	-514.7	956.1	925.3	30.83	31.013			
6,200.0	5,885.4	5,949.1	5,885.4	35.4	19.0	-173.59	-564.7	-514.7	958.3	927.4	30.94	30.978			
6,214.6	5,900.0	5,963.8	5,900.0	35.4	19.1	54.09	-564.7	-514.7	958.4	927.4	30.95	30.966			
6,300.0	5,985.4	6,049.1	5,985.4	35.5	19.2	54.09	-564.7	-514.7	958.4	927.1	31.22	30.697			
6,400.0	6,085.4	6,149.1	6,085.4	35.5	19.3	54.09	-564.7	-514.7	958.4	926.8	31.54	30.390			
6,500.0	6,185.4	6,249.1	6,185.4	35.6	19.4	54.09	-564.7	-514.7	958.4	926.5	31.85	30.086			
6,600.0	6,285.4	6,349.1	6,285.4	35.7	19.6	54.09	-564.7	-514.7	958.4	926.2	32.17	29.786			
6,700.0	6,385.4	6,449.1	6,385.4	35.8	19.7	54.09	-564.7	-514.7	958.4	925.9	32.50	29.489			
6,800.0	6,485.4	6,549.1	6,485.4	35.8	19.8	54.09	-564.7	-514.7	958.4	925.5	32.83	29.195			
6,900.0	6,585.4	6,649.1	6,585.4	35.9	20.0	54.09	-564.7	-514.7	958.4	925.2	33.16	28.904			
7,000.0	6,685.4	6,749.1	6,685.4	36.0	20.1	54.09	-564.7	-514.7	958.4	924.9	33.49	28.617			
7,100.0	6,785.4	6,849.1	6,785.4	36.1	20.3	54.09	-564.7	-514.7	958.4	924.5	33.82	28.334			
7,200.0	6,885.4	6,949.1	6,885.4	36.1	20.4	54.09	-564.7	-514.7	958.4	924.2	34.16	28.053			
7,300.0	6,985.4	7,049.1	6,985.4	36.2	20.5	54.09	-564.7	-514.7	958.4	923.9	34.50	27.777			
7,400.0	7,085.4	7,149.1	7,085.4	36.3	20.7	54.09	-564.7	-514.7	958.4	923.5	34.84	27.504			
7,500.0	7,185.4	7,249.1	7,185.4	36.4	20.8	54.09	-564.7	-514.7	958.4	923.2	35.19	27.234			
7,600.0	7,285.4	7,349.1	7,285.4	36.5	21.0	54.09	-564.7	-514.7	958.4	922.8	35.54	26.968			
7,700.0	7,385.4	7,449.1	7,385.4	36.6	21.1	54.09	-564.7	-514.7	958.4	922.5	35.89	26.705			
7,800.0	7,485.4	7,549.1	7,485.4	36.7	21.3	54.09	-564.7	-514.7	958.4	922.1	36.24	26.446			
7,900.0	7,585.4	7,649.1	7,585.4	36.7	21.4	54.09	-564.7	-514.7	958.4	921.8	36.59	26.190			
8,000.0	7,685.4	7,749.1	7,685.4	36.8	21.6	54.09	-564.7	-514.7	958.4	921.4	36.95	25.938			
8,100.0	7,785.4	7,849.1	7,785.4	36.9	21.7	54.09	-564.7	-514.7	958.4	921.1	37.31	25.689			
8,200.0	7,885.4	7,949.1	7,885.4	37.0	21.9	54.09	-564.7	-514.7	958.4	920.7	37.67	25.444			
8,300.0	7,985.4	8,049.1	7,985.4	37.1	22.1	54.09	-564.7	-514.7	958.4	920.3	38.03	25.202			
8,339.6	8,025.0	8,088.8	8,025.0	37.2	22.1	54.09	-564.7	-514.7	958.4	920.2	38.17	25.107			

SRC Olson 41-3 Pad Sec.3-T3N-R68W - SRC Olson 41-3 (Vert.) - Wellbore #1 - Plan #1 (6-29-12)													Offset Site Error:	0.0 ft
Survey Program: 0-MWD													Offset Well Error:	0.0 ft
Reference		Offset		Semi Major Axis			Distance							Warning
Measured Depth (ft)	Vertical Depth (ft)	Measured Depth (ft)	Vertical Depth (ft)	Reference (ft)	Offset (ft)	Highside Toolface (°)	Offset Wellbore Centre +N/-S (ft)	Offset Wellbore Centre +E/-W (ft)	Between Centres (ft)	Between Ellipses (ft)	Minimum Separation (ft)	Separation Factor		
0.0	0.0	0.0	0.0	0.0	0.0	35.76	36.4	26.2	44.9					
100.0	100.0	99.0	99.0	0.1	0.1	35.76	36.4	26.2	44.9	44.7	0.22	200.722		
200.0	200.0	199.0	199.0	0.3	0.3	35.76	36.4	26.2	44.9	44.2	0.67	66.796		
300.0	300.0	299.0	299.0	0.6	0.6	35.76	36.4	26.2	44.9	43.8	1.12	40.024		
400.0	400.0	399.0	399.0	0.8	0.8	35.76	36.4	26.2	44.9	43.3	1.57	28.572		
500.0	500.0	499.0	499.0	1.0	1.0	35.76	36.4	26.2	44.9	42.9	2.02	22.216		
600.0	600.0	599.0	599.0	1.2	1.2	35.76	36.4	26.2	44.9	42.4	2.47	18.173 CC, ES		
700.0	700.0	699.0	699.0	1.4	1.5	127.51	36.4	26.2	45.9	43.0	2.91	15.798		
800.0	799.8	798.8	798.8	1.7	1.7	132.29	36.4	26.2	49.3	46.0	3.34	14.762		
850.0	849.7	848.7	848.7	1.8	1.8	135.44	36.4	26.2	52.0	48.5	3.56	14.618 SF		
900.0	899.5	898.5	898.5	1.9	1.9	146.49	36.4	26.2	55.6	51.9	3.77	14.745		
1,000.0	998.8	997.8	997.8	2.1	2.1	162.00	36.4	26.2	65.8	61.6	4.20	15.683		
1,100.0	1,097.8	1,096.8	1,096.8	2.4	2.4	171.46	36.4	26.2	79.6	74.9	4.62	17.227		
1,200.0	1,196.3	1,195.3	1,195.3	2.7	2.6	177.23	36.4	26.2	96.7	91.6	5.04	19.181		
1,300.0	1,294.2	1,293.2	1,293.2	3.0	2.8	-179.22	36.4	26.2	117.1	111.6	5.46	21.428		
1,400.0	1,391.4	1,390.4	1,390.4	3.5	3.0	-177.02	36.4	26.2	140.7	134.8	5.89	23.897		
1,500.0	1,487.7	1,486.7	1,486.7	3.9	3.2	-175.66	36.4	26.2	167.5	161.2	6.31	26.539		
1,600.0	1,583.1	1,582.1	1,582.1	4.5	3.4	-174.81	36.4	26.2	197.5	190.8	6.74	29.318		
1,700.0	1,677.3	1,676.3	1,676.3	5.1	3.7	-174.29	36.4	26.2	230.7	223.5	7.16	32.206		
1,800.0	1,770.4	1,769.4	1,769.4	5.7	3.9	-173.97	36.4	26.2	267.1	259.5	7.59	35.180		
1,817.7	1,786.7	1,785.7	1,785.7	5.9	3.9	-173.93	36.4	26.2	273.8	266.2	7.67	35.714		
1,900.0	1,862.6	1,861.6	1,861.6	6.5	4.1	-174.56	36.4	26.2	305.6	297.5	8.07	37.850		
2,000.0	1,954.8	1,953.8	1,953.8	7.2	4.3	-175.17	36.4	26.2	344.1	335.6	8.57	40.139		
2,100.0	2,047.1	2,046.1	2,046.1	8.0	4.5	-175.66	36.4	26.2	382.7	373.7	9.08	42.148		
2,200.0	2,139.3	2,138.3	2,138.3	8.7	4.7	-176.06	36.4	26.2	421.4	411.8	9.59	43.923		
2,300.0	2,231.5	2,230.5	2,230.5	9.5	4.9	-176.39	36.4	26.2	460.0	449.9	10.11	45.499		
2,400.0	2,323.7	2,322.7	2,322.7	10.3	5.1	-176.67	36.4	26.2	498.6	488.0	10.63	46.908		
2,500.0	2,415.9	2,414.9	2,414.9	11.1	5.3	-176.91	36.4	26.2	537.3	526.1	11.15	48.172		
2,600.0	2,508.1	2,507.1	2,507.1	11.8	5.5	-177.12	36.4	26.2	576.0	564.3	11.68	49.313		
2,700.0	2,600.3	2,599.3	2,599.3	12.6	5.7	-177.30	36.4	26.2	614.6	602.4	12.21	50.346		
2,800.0	2,692.5	2,691.5	2,691.5	13.4	5.9	-177.46	36.4	26.2	653.3	640.6	12.74	51.286		
2,900.0	2,784.7	2,783.7	2,783.7	14.2	6.1	-177.60	36.4	26.2	692.0	678.7	13.27	52.145		
3,000.0	2,876.9	2,875.9	2,875.9	15.0	6.4	-177.73	36.4	26.2	730.6	716.8	13.80	52.932		
3,100.0	2,969.1	2,968.1	2,968.1	15.8	6.6	-177.84	36.4	26.2	769.3	755.0	14.34	53.656		
3,200.0	3,061.3	3,060.3	3,060.3	16.6	6.8	-177.94	36.4	26.2	808.0	793.1	14.87	54.324		
3,300.0	3,153.5	3,152.5	3,152.5	17.4	7.0	-178.04	36.4	26.2	846.7	831.3	15.41	54.941		
3,400.0	3,245.7	3,244.7	3,244.7	18.2	7.2	-178.12	36.4	26.2	885.4	869.4	15.95	55.514		
3,500.0	3,337.9	3,336.9	3,336.9	19.0	7.4	-178.20	36.4	26.2	924.1	907.6	16.49	56.046		
3,600.0	3,430.1	3,429.1	3,429.1	19.8	7.6	-178.27	36.4	26.2	962.8	945.7	17.03	56.542		
3,700.0	3,522.3	3,521.3	3,521.3	20.6	7.8	-178.34	36.4	26.2	1,001.4	983.9	17.57	57.005		
3,800.0	3,614.6	3,613.6	3,613.6	21.4	8.0	-178.40	36.4	26.2	1,040.1	1,022.0	18.11	57.439		
3,900.0	3,706.8	3,705.8	3,705.8	22.2	8.2	-178.46	36.4	26.2	1,078.8	1,060.2	18.65	57.846		
4,000.0	3,799.0	3,798.0	3,798.0	23.0	8.4	-178.51	36.4	26.2	1,117.5	1,098.3	19.19	58.227		
4,100.0	3,891.2	3,890.2	3,890.2	23.8	8.6	-178.56	36.4	26.2	1,156.2	1,136.5	19.74	58.587		
4,200.0	3,983.4	3,982.4	3,982.4	24.6	8.8	-178.61	36.4	26.2	1,194.9	1,174.6	20.28	58.925		
4,300.0	4,075.6	4,074.6	4,074.6	25.4	9.0	-178.65	36.4	26.2	1,233.6	1,212.8	20.82	59.245		
4,400.0	4,167.8	4,166.8	4,166.8	26.2	9.3	-178.69	36.4	26.2	1,272.3	1,250.9	21.37	59.547		
4,500.0	4,260.0	4,259.0	4,259.0	27.0	9.5	-178.73	36.4	26.2	1,311.0	1,289.1	21.91	59.833		
4,600.0	4,352.2	4,351.2	4,351.2	27.8	9.7	-178.77	36.4	26.2	1,349.7	1,327.2	22.46	60.104		
4,700.0	4,444.4	4,443.4	4,443.4	28.6	9.9	-178.80	36.4	26.2	1,388.4	1,365.4	23.00	60.361		
4,800.0	4,536.6	4,535.6	4,535.6	29.4	10.1	-178.84	36.4	26.2	1,427.1	1,403.6	23.55	60.605		
4,900.0	4,628.8	4,627.8	4,627.8	30.2	10.3	-178.87	36.4	26.2	1,465.8	1,441.7	24.09	60.837		

COMPASS 2003.21 Build 46



<b>Company:</b>	Synergy Resources	<b>Local Co-ordinate Reference:</b>	Well SRC Olson 32-3D
<b>Project:</b>	SEC.3-T3N-R68W	<b>TVD Reference:</b>	WELL @ 5055.0ft (Original Well Elev)
<b>Reference Site:</b>	SRC Olson 41-3 Pad Sec.3-T3N-R68W	<b>MD Reference:</b>	WELL @ 5055.0ft (Original Well Elev)
<b>Site Error:</b>	0.0ft	<b>North Reference:</b>	True
<b>Reference Well:</b>	SRC Olson 32-3D	<b>Survey Calculation Method:</b>	Minimum Curvature
<b>Well Error:</b>	0.0ft	<b>Output errors are at</b>	2.00 sigma
<b>Reference Wellbore</b>	Wellbore #1	<b>Database:</b>	Landmark
<b>Reference Design:</b>	Plan #1 (6-29-12)	<b>Offset TVD Reference:</b>	Offset Datum

<b>Offset Design</b> SRC Olson 41-3 Pad Sec.3-T3N-R68W - SRC Olson 41-3 (Vert.) - Wellbore #1 - Plan #1 (6-29-12)												<b>Offset Site Error:</b>	0.0 ft
Survey Program: 0-MWD												<b>Offset Well Error:</b>	0.0 ft
Reference		Offset		Semi Major Axis			Distance						
Measured Depth (ft)	Vertical Depth (ft)	Measured Depth (ft)	Vertical Depth (ft)	Reference (ft)	Offset (ft)	Highside Toolface (°)	Offset Wellbore Centre +N/-S (ft)	+E/-W (ft)	Between Centres (ft)	Between Ellipses (ft)	Minimum Separation (ft)	Separation Factor	Warning
5,000.0	4,721.0	4,720.0	4,720.0	31.0	10.5	-178.90	36.4	26.2	1,504.5	1,479.9	24.64	61.058	
5,076.1	4,791.2	4,790.2	4,790.2	31.6	10.7	-178.92	36.4	26.2	1,533.9	1,508.9	25.06	61.219	
5,100.0	4,813.3	4,812.3	4,812.3	31.7	10.7	-178.93	36.4	26.2	1,543.1	1,517.9	25.22	61.193	
5,200.0	4,906.4	4,905.4	4,905.4	32.3	10.9	-178.97	36.4	26.2	1,579.4	1,553.6	25.85	61.098	
5,300.0	5,000.8	4,999.8	4,999.8	32.8	11.1	-179.00	36.4	26.2	1,612.4	1,586.0	26.45	60.966	
5,400.0	5,096.3	5,095.3	5,095.3	33.3	11.3	-179.03	36.4	26.2	1,642.2	1,615.2	27.01	60.802	
5,500.0	5,192.7	5,191.7	5,191.7	33.7	11.6	-179.05	36.4	26.2	1,668.5	1,641.0	27.53	60.609	
5,600.0	5,290.1	5,289.1	5,289.1	34.1	11.8	-179.07	36.4	26.2	1,691.5	1,663.5	28.01	60.392	
5,700.0	5,388.1	5,387.1	5,387.1	34.4	12.0	-179.09	36.4	26.2	1,711.1	1,682.7	28.45	60.150	
5,800.0	5,486.8	5,485.8	5,485.8	34.7	12.2	-179.10	36.4	26.2	1,727.2	1,698.4	28.84	59.887	
5,900.0	5,586.0	5,585.0	5,585.0	35.0	12.4	-179.11	36.4	26.2	1,739.9	1,710.7	29.19	59.603	
6,000.0	5,685.6	5,684.6	5,684.6	35.2	12.7	-179.12	36.4	26.2	1,749.2	1,719.7	29.50	59.299	
6,100.0	5,785.4	5,784.4	5,784.4	35.3	12.9	-179.13	36.4	26.2	1,754.9	1,725.1	29.76	58.974	
6,200.0	5,885.4	5,884.4	5,884.4	35.4	13.1	-179.13	36.4	26.2	1,757.2	1,727.2	29.97	58.629	
6,214.6	5,900.0	5,899.0	5,899.0	35.4	13.1	48.55	36.4	26.2	1,757.2	1,727.2	30.00	58.575	
6,300.0	5,985.4	5,984.4	5,984.4	35.5	13.3	48.55	36.4	26.2	1,757.2	1,726.9	30.31	57.965	
6,400.0	6,085.4	6,084.4	6,084.4	35.5	13.6	48.55	36.4	26.2	1,757.2	1,726.5	30.68	57.272	
6,500.0	6,185.4	6,184.4	6,184.4	35.6	13.8	48.55	36.4	26.2	1,757.2	1,726.2	31.05	56.593	
6,600.0	6,285.4	6,284.4	6,284.4	35.7	14.0	48.55	36.4	26.2	1,757.2	1,725.8	31.42	55.926	
6,700.0	6,385.4	6,384.4	6,384.4	35.8	14.2	48.55	36.4	26.2	1,757.2	1,725.4	31.79	55.272	
6,800.0	6,485.4	6,484.4	6,484.4	35.8	14.5	48.55	36.4	26.2	1,757.2	1,725.0	32.17	54.630	
6,900.0	6,585.4	6,584.4	6,584.4	35.9	14.7	48.55	36.4	26.2	1,757.2	1,724.7	32.54	54.001	
7,000.0	6,685.4	6,684.4	6,684.4	36.0	14.9	48.55	36.4	26.2	1,757.2	1,724.3	32.92	53.383	
7,100.0	6,785.4	6,784.4	6,784.4	36.1	15.1	48.55	36.4	26.2	1,757.2	1,723.9	33.30	52.777	
7,200.0	6,885.4	6,884.4	6,884.4	36.1	15.4	48.55	36.4	26.2	1,757.2	1,723.5	33.67	52.182	
7,300.0	6,985.4	6,984.4	6,984.4	36.2	15.6	48.55	36.4	26.2	1,757.2	1,723.1	34.06	51.598	
7,400.0	7,085.4	7,084.4	7,084.4	36.3	15.8	48.55	36.4	26.2	1,757.2	1,722.8	34.44	51.025	
7,500.0	7,185.4	7,184.4	7,184.4	36.4	16.0	48.55	36.4	26.2	1,757.2	1,722.4	34.82	50.463	
7,600.0	7,285.4	7,284.4	7,284.4	36.5	16.3	48.55	36.4	26.2	1,757.2	1,722.0	35.21	49.911	
7,700.0	7,385.4	7,384.4	7,384.4	36.6	16.5	48.55	36.4	26.2	1,757.2	1,721.6	35.59	49.369	
7,800.0	7,485.4	7,484.4	7,484.4	36.7	16.7	48.55	36.4	26.2	1,757.2	1,721.2	35.98	48.837	
7,900.0	7,585.4	7,584.4	7,584.4	36.7	16.9	48.55	36.4	26.2	1,757.2	1,720.8	36.37	48.315	
8,000.0	7,685.4	7,684.4	7,684.4	36.8	17.2	48.55	36.4	26.2	1,757.2	1,720.4	36.76	47.802	
8,100.0	7,785.4	7,784.4	7,784.4	36.9	17.4	48.55	36.4	26.2	1,757.2	1,720.0	37.15	47.298	
8,200.0	7,885.4	7,884.4	7,884.4	37.0	17.6	48.55	36.4	26.2	1,757.2	1,719.7	37.54	46.804	
8,300.0	7,985.4	7,984.4	7,984.4	37.1	17.8	48.55	36.4	26.2	1,757.2	1,719.3	37.94	46.319	
8,339.6	8,025.0	8,024.0	8,024.0	37.2	17.9	48.55	36.4	26.2	1,757.2	1,719.1	38.09	46.128	



<b>Company:</b>	Synergy Resources	<b>Local Co-ordinate Reference:</b>	Well SRC Olson 32-3D
<b>Project:</b>	SEC.3-T3N-R68W	<b>TVD Reference:</b>	WELL @ 5055.0ft (Original Well Elev)
<b>Reference Site:</b>	SRC Olson 41-3 Pad Sec.3-T3N-R68W	<b>MD Reference:</b>	WELL @ 5055.0ft (Original Well Elev)
<b>Site Error:</b>	0.0ft	<b>North Reference:</b>	True
<b>Reference Well:</b>	SRC Olson 32-3D	<b>Survey Calculation Method:</b>	Minimum Curvature
<b>Well Error:</b>	0.0ft	<b>Output errors are at</b>	2.00 sigma
<b>Reference Wellbore</b>	Wellbore #1	<b>Database:</b>	Landmark
<b>Reference Design:</b>	Plan #1 (6-29-12)	<b>Offset TVD Reference:</b>	Offset Datum

Offset Design													Offset Site Error:	0.0 ft
Survey Program: 0-MWD													Offset Well Error:	0.0 ft
Reference		Offset		Semi Major Axis			Distance							Warning
Measured Depth (ft)	Vertical Depth (ft)	Measured Depth (ft)	Vertical Depth (ft)	Reference (ft)	Offset (ft)	Highside Toolface (°)	Offset Wellbore Centre +N/-S (ft)	+E/-W (ft)	Between Centres (ft)	Between Ellipses (ft)	Minimum Separation (ft)	Separation Factor		
0.0	0.0	0.0	0.0	0.0	0.0	34.97	12.4	8.7	15.1	15.1	0.00	N/A		
100.0	100.0	99.0	99.0	0.1	0.1	34.97	12.4	8.7	15.1	14.9	0.22	67.497		
200.0	200.0	199.0	199.0	0.3	0.3	34.97	12.4	8.7	15.1	14.4	0.67	22.462		
288.1	288.1	287.1	287.1	0.5	0.5	40.00	11.5	9.7	15.0	14.0	1.05	14.277 CC		
300.0	300.0	299.0	299.0	0.6	0.5	41.48	11.3	10.0	15.0	13.9	1.10	13.613 ES		
400.0	400.0	398.8	398.6	0.8	0.8	60.32	7.9	13.9	16.0	14.5	1.54	10.390		
500.0	500.0	498.4	497.9	1.0	1.0	83.63	2.3	20.2	20.3	18.3	2.00	10.148 SF		
600.0	600.0	597.9	596.8	1.2	1.3	104.30	-6.7	26.1	27.1	24.6	2.48	10.920		
700.0	700.0	696.6	694.6	1.4	1.6	-150.26	-18.8	31.4	38.4	35.5	2.90	13.232		
800.0	799.8	794.3	791.0	1.7	1.9	-141.08	-34.1	35.9	55.4	52.0	3.36	16.513		
850.0	849.7	842.6	838.4	1.8	2.1	-138.08	-42.9	37.9	65.8	62.2	3.59	18.313		
900.0	899.5	890.6	885.5	1.9	2.3	-127.86	-52.4	39.8	77.0	73.2	3.82	20.142		
1,000.0	998.8	986.1	978.5	2.1	2.7	-114.03	-73.5	42.9	100.7	96.4	4.32	23.320		
1,100.0	1,097.8	1,080.7	1,070.0	2.4	3.1	-105.55	-97.5	45.4	125.7	120.9	4.87	25.811		
1,200.0	1,196.3	1,177.1	1,162.8	2.7	3.6	-100.44	-123.7	47.6	151.3	145.8	5.50	27.499		
1,300.0	1,294.2	1,273.9	1,255.9	3.0	4.1	-97.84	-150.0	49.7	176.3	170.1	6.21	28.384		
1,400.0	1,391.4	1,370.7	1,349.0	3.5	4.7	-96.82	-176.3	51.9	200.8	193.8	7.01	28.650		
1,500.0	1,487.7	1,467.3	1,442.0	3.9	5.2	-96.85	-202.5	54.1	225.0	217.1	7.89	28.500		
1,600.0	1,583.1	1,563.7	1,534.7	4.5	5.7	-97.63	-228.7	56.2	249.3	240.4	8.87	28.094		
1,700.0	1,677.3	1,659.7	1,627.1	5.1	6.2	-98.93	-254.8	58.4	273.8	263.9	9.93	27.561		
1,800.0	1,770.4	1,755.3	1,719.0	5.7	6.8	-100.60	-280.8	60.5	299.0	287.9	11.07	26.998		
1,817.7	1,786.7	1,772.1	1,735.2	5.9	6.9	-100.92	-285.4	60.9	303.5	292.2	11.28	26.900		
1,900.0	1,862.6	1,850.4	1,810.5	6.5	7.3	-103.41	-306.7	62.6	325.0	312.7	12.27	26.481		
2,000.0	1,954.8	1,945.6	1,902.1	7.2	7.8	-106.04	-332.5	64.7	351.8	338.3	13.48	26.096		
2,100.0	2,047.1	2,040.7	1,993.6	8.0	8.4	-108.29	-358.4	66.9	379.2	364.5	14.69	25.819		
2,200.0	2,139.3	2,135.9	2,085.2	8.7	8.9	-110.25	-384.2	69.0	407.1	391.2	15.89	25.620		
2,300.0	2,231.5	2,231.0	2,176.7	9.5	9.4	-111.95	-410.1	71.1	435.3	418.2	17.09	25.478		
2,400.0	2,323.7	2,326.2	2,268.3	10.3	10.0	-113.45	-436.0	73.2	463.9	445.6	18.28	25.378		
2,500.0	2,415.9	2,421.3	2,359.8	11.1	10.5	-114.78	-461.8	75.4	492.7	473.3	19.47	25.311		
2,600.0	2,508.1	2,516.5	2,451.4	11.8	11.1	-115.96	-487.7	77.5	521.8	501.2	20.65	25.266		
2,700.0	2,600.3	2,611.7	2,542.9	12.6	11.6	-117.02	-513.6	79.6	551.0	529.2	21.83	25.240		
2,800.0	2,692.5	2,706.8	2,634.5	13.4	12.1	-117.97	-539.4	81.7	580.4	557.4	23.01	25.227		
2,900.0	2,784.7	2,802.0	2,726.0	14.2	12.7	-118.83	-565.3	83.9	610.0	585.8	24.18	25.224		
3,000.0	2,876.9	2,897.1	2,817.6	15.0	13.2	-119.61	-591.1	86.0	639.6	614.3	25.35	25.229		
3,100.0	2,969.1	2,992.3	2,909.1	15.8	13.7	-120.33	-617.0	88.1	669.4	642.8	26.52	25.239		
3,200.0	3,061.3	3,087.4	3,000.7	16.6	14.3	-120.98	-642.9	90.2	699.2	671.5	27.69	25.254		
3,300.0	3,153.5	3,182.6	3,092.2	17.4	14.8	-121.58	-668.7	92.4	729.1	700.3	28.85	25.272		
3,400.0	3,245.7	3,277.7	3,183.8	18.2	15.4	-122.13	-694.6	94.5	759.1	729.1	30.01	25.293		
3,500.0	3,337.9	3,372.9	3,275.3	19.0	15.9	-122.64	-720.4	96.6	789.1	757.9	31.17	25.315		
3,600.0	3,430.1	3,468.0	3,366.9	19.8	16.4	-123.12	-746.3	98.7	819.2	786.9	32.33	25.339		
3,700.0	3,522.3	3,563.2	3,458.4	20.6	17.0	-123.56	-772.2	100.9	849.3	815.9	33.49	25.363		
3,800.0	3,614.6	3,658.4	3,550.0	21.4	17.5	-123.96	-798.0	103.0	879.5	844.9	34.64	25.388		
3,900.0	3,706.8	3,753.5	3,641.5	22.2	18.1	-124.35	-823.9	105.1	909.7	873.9	35.80	25.413		
4,000.0	3,799.0	3,848.7	3,733.1	23.0	18.6	-124.71	-849.8	107.2	940.0	903.0	36.95	25.438		
4,100.0	3,891.2	3,943.8	3,824.6	23.8	19.1	-125.04	-875.6	109.4	970.3	932.2	38.10	25.463		
4,200.0	3,983.4	4,039.0	3,916.2	24.6	19.7	-125.36	-901.5	111.5	1,000.6	961.3	39.26	25.488		
4,300.0	4,075.6	4,134.1	4,007.7	25.4	20.2	-125.65	-927.3	113.6	1,030.9	990.5	40.41	25.513		
4,400.0	4,167.8	4,229.3	4,099.2	26.2	20.8	-125.93	-953.2	115.7	1,061.3	1,019.7	41.56	25.537		
4,500.0	4,260.0	4,324.4	4,190.8	27.0	21.3	-126.20	-979.1	117.9	1,091.7	1,049.0	42.71	25.561		
4,600.0	4,352.2	4,419.6	4,282.3	27.8	21.8	-126.45	-1,004.9	120.0	1,122.1	1,078.2	43.86	25.584		
4,700.0	4,444.4	4,514.7	4,373.9	28.6	22.4	-126.69	-1,030.8	122.1	1,152.5	1,107.5	45.01	25.607		
4,800.0	4,536.6	4,609.9	4,465.4	29.4	22.9	-126.91	-1,056.7	124.2	1,182.9	1,136.8	46.16	25.629		

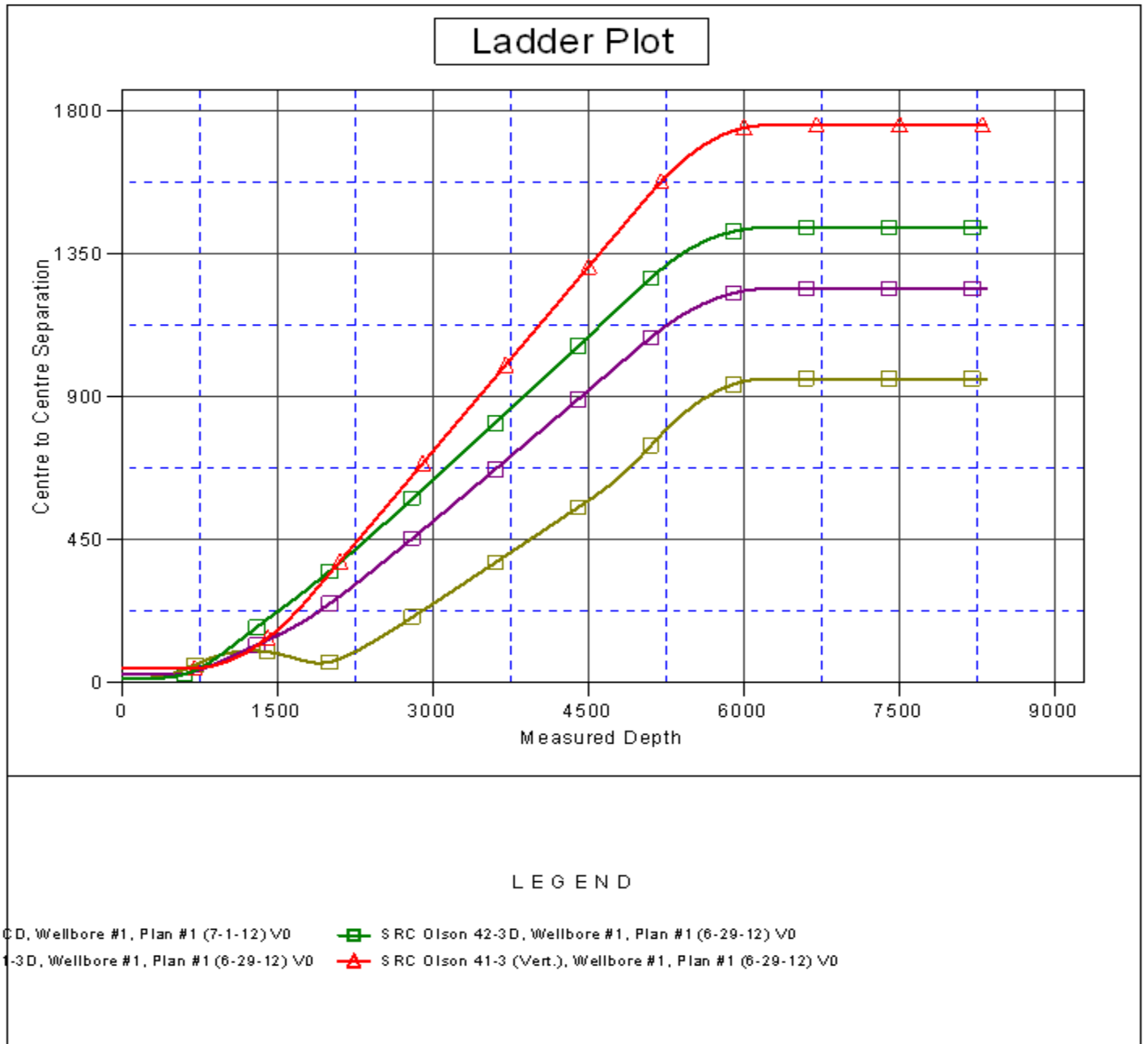
CC - Min centre to center distance or convergent point, SF - min separation factor, ES - min ellipse separation

<b>Company:</b>	Synergy Resources	<b>Local Co-ordinate Reference:</b>	Well SRC Olson 32-3D
<b>Project:</b>	SEC.3-T3N-R68W	<b>TVD Reference:</b>	WELL @ 5055.0ft (Original Well Elev)
<b>Reference Site:</b>	SRC Olson 41-3 Pad Sec.3-T3N-R68W	<b>MD Reference:</b>	WELL @ 5055.0ft (Original Well Elev)
<b>Site Error:</b>	0.0ft	<b>North Reference:</b>	True
<b>Reference Well:</b>	SRC Olson 32-3D	<b>Survey Calculation Method:</b>	Minimum Curvature
<b>Well Error:</b>	0.0ft	<b>Output errors are at</b>	2.00 sigma
<b>Reference Wellbore</b>	Wellbore #1	<b>Database:</b>	Landmark
<b>Reference Design:</b>	Plan #1 (6-29-12)	<b>Offset TVD Reference:</b>	Offset Datum

Offset Design													SRC Olson 41-3 Pad Sec.3-T3N-R68W - SRC Olson 42-3D - Wellbore #1 - Plan #1 (6-29-12)		Offset Site Error:		0.0 ft
Survey Program: 0-MWD													Offset Well Error:		0.0 ft		
Reference		Offset		Semi Major Axis			Distance							Warning			
Measured Depth (ft)	Vertical Depth (ft)	Measured Depth (ft)	Vertical Depth (ft)	Reference (ft)	Offset (ft)	Highside Toolface (°)	Offset Wellbore Centre +N/-S (ft)	+E/-W (ft)	Between Centres (ft)	Between Ellipses (ft)	Minimum Separation (ft)	Separation Factor					
4,900.0	4,628.8	4,705.1	4,557.0	30.2	23.5	-127.12	-1,082.5	126.4	1,213.4	1,166.1	47.30	25.651					
5,000.0	4,721.0	4,800.2	4,648.5	31.0	24.0	-127.33	-1,108.4	128.5	1,243.9	1,195.4	48.45	25.672					
5,076.1	4,791.2	4,872.6	4,718.2	31.6	24.4	-127.48	-1,128.1	130.1	1,267.0	1,217.7	49.32	25.688					
5,100.0	4,813.3	4,897.6	4,742.3	31.7	24.5	-127.65	-1,134.8	130.6	1,274.3	1,224.7	49.58	25.700					
5,200.0	4,906.4	5,003.2	4,844.6	32.3	24.9	-128.34	-1,160.7	132.8	1,302.7	1,252.3	50.45	25.823					
5,300.0	5,000.8	5,109.6	4,948.6	32.8	25.3	-129.01	-1,183.0	134.6	1,328.4	1,277.1	51.23	25.931					
5,400.0	5,096.3	5,216.7	5,054.0	33.3	25.6	-129.66	-1,201.6	136.1	1,351.2	1,299.3	51.92	26.025					
5,500.0	5,192.7	5,324.3	5,160.7	33.7	25.8	-130.29	-1,216.3	137.3	1,371.2	1,318.6	52.51	26.110					
5,600.0	5,290.1	5,432.4	5,268.2	34.1	26.0	-130.90	-1,227.1	138.2	1,388.2	1,335.2	53.01	26.189					
5,700.0	5,388.1	5,540.6	5,376.2	34.4	26.2	-131.51	-1,233.8	138.8	1,402.4	1,349.0	53.40	26.264					
5,800.0	5,486.8	5,648.9	5,484.5	34.7	26.3	-132.11	-1,236.4	139.0	1,413.7	1,360.0	53.69	26.331					
5,900.0	5,586.0	5,749.4	5,585.0	35.0	26.4	-132.61	-1,236.4	139.0	1,422.3	1,368.4	53.90	26.387					
6,000.0	5,685.6	5,849.0	5,684.6	35.2	26.5	-132.98	-1,236.4	139.0	1,428.6	1,374.5	54.08	26.417					
6,100.0	5,785.4	5,948.8	5,784.4	35.3	26.6	-133.20	-1,236.4	139.0	1,432.5	1,378.3	54.23	26.415					
6,200.0	5,885.4	6,048.8	5,884.4	35.4	26.7	-133.29	-1,236.4	139.0	1,434.1	1,379.7	54.36	26.380					
6,214.6	5,900.0	6,063.5	5,899.0	35.4	26.7	94.39	-1,236.4	139.0	1,434.1	1,379.7	54.38	26.371					
6,300.0	5,985.4	6,148.8	5,984.4	35.5	26.7	94.39	-1,236.4	139.0	1,434.1	1,379.5	54.53	26.299					
6,400.0	6,085.4	6,248.8	6,084.4	35.5	26.8	94.39	-1,236.4	139.0	1,434.1	1,379.4	54.70	26.218					
6,500.0	6,185.4	6,348.8	6,184.4	35.6	26.9	94.39	-1,236.4	139.0	1,434.1	1,379.2	54.87	26.135					
6,600.0	6,285.4	6,448.8	6,284.4	35.7	27.0	94.39	-1,236.4	139.0	1,434.1	1,379.0	55.05	26.052					
6,700.0	6,385.4	6,548.8	6,384.4	35.8	27.1	94.39	-1,236.4	139.0	1,434.1	1,378.8	55.23	25.967					
6,800.0	6,485.4	6,648.8	6,484.4	35.8	27.2	94.39	-1,236.4	139.0	1,434.1	1,378.7	55.41	25.882					
6,900.0	6,585.4	6,748.8	6,584.4	35.9	27.3	94.39	-1,236.4	139.0	1,434.1	1,378.5	55.59	25.796					
7,000.0	6,685.4	6,848.8	6,684.4	36.0	27.4	94.39	-1,236.4	139.0	1,434.1	1,378.3	55.78	25.708					
7,100.0	6,785.4	6,948.8	6,784.4	36.1	27.5	94.39	-1,236.4	139.0	1,434.1	1,378.1	55.97	25.621					
7,200.0	6,885.4	7,048.8	6,884.4	36.1	27.6	94.39	-1,236.4	139.0	1,434.1	1,377.9	56.17	25.532					
7,300.0	6,985.4	7,148.8	6,984.4	36.2	27.7	94.39	-1,236.4	139.0	1,434.1	1,377.7	56.36	25.443					
7,400.0	7,085.4	7,248.8	7,084.4	36.3	27.8	94.39	-1,236.4	139.0	1,434.1	1,377.5	56.56	25.353					
7,500.0	7,185.4	7,348.8	7,184.4	36.4	27.9	94.39	-1,236.4	139.0	1,434.1	1,377.3	56.77	25.262					
7,600.0	7,285.4	7,448.8	7,284.4	36.5	28.0	94.39	-1,236.4	139.0	1,434.1	1,377.1	56.97	25.171					
7,700.0	7,385.4	7,548.8	7,384.4	36.6	28.1	94.39	-1,236.4	139.0	1,434.1	1,376.9	57.18	25.079					
7,800.0	7,485.4	7,648.8	7,484.4	36.7	28.2	94.39	-1,236.4	139.0	1,434.1	1,376.7	57.39	24.987					
7,900.0	7,585.4	7,748.8	7,584.4	36.7	28.3	94.39	-1,236.4	139.0	1,434.1	1,376.5	57.61	24.894					
8,000.0	7,685.4	7,848.8	7,684.4	36.8	28.4	94.39	-1,236.4	139.0	1,434.1	1,376.3	57.82	24.801					
8,100.0	7,785.4	7,948.8	7,784.4	36.9	28.5	94.39	-1,236.4	139.0	1,434.1	1,376.0	58.04	24.707					
8,200.0	7,885.4	8,048.8	7,884.4	37.0	28.6	94.39	-1,236.4	139.0	1,434.1	1,375.8	58.26	24.613					
8,300.0	7,985.4	8,148.8	7,984.4	37.1	28.7	94.39	-1,236.4	139.0	1,434.1	1,375.6	58.49	24.519					
8,339.6	8,025.0	8,188.5	8,024.0	37.2	28.8	94.39	-1,236.4	139.0	1,434.1	1,375.5	58.58	24.481					

<b>Company:</b>	Synergy Resources	<b>Local Co-ordinate Reference:</b>	Well SRC Olson 32-3D
<b>Project:</b>	SEC.3-T3N-R68W	<b>TVD Reference:</b>	WELL @ 5055.0ft (Original Well Elev)
<b>Reference Site:</b>	SRC Olson 41-3 Pad Sec.3-T3N-R68W	<b>MD Reference:</b>	WELL @ 5055.0ft (Original Well Elev)
<b>Site Error:</b>	0.0ft	<b>North Reference:</b>	True
<b>Reference Well:</b>	SRC Olson 32-3D	<b>Survey Calculation Method:</b>	Minimum Curvature
<b>Well Error:</b>	0.0ft	<b>Output errors are at</b>	2.00 sigma
<b>Reference Wellbore</b>	Wellbore #1	<b>Database:</b>	Landmark
<b>Reference Design:</b>	Plan #1 (6-29-12)	<b>Offset TVD Reference:</b>	Offset Datum

Reference Depths are relative to WELL @ 5055.0ft (Original Well Elev) Coordinates are relative to: SRC Olson 32-3D  
 Offset Depths are relative to Offset Datum  
 Central Meridian is -105.500000 °  
 Coordinate System is US State Plane 1983, Colorado Northern Zone  
 Grid Convergence at Surface is: 0.33°



<b>Company:</b>	Synergy Resources	<b>Local Co-ordinate Reference:</b>	Well SRC Olson 32-3D
<b>Project:</b>	SEC.3-T3N-R68W	<b>TVD Reference:</b>	WELL @ 5055.0ft (Original Well Elev)
<b>Reference Site:</b>	SRC Olson 41-3 Pad Sec.3-T3N-R68W	<b>MD Reference:</b>	WELL @ 5055.0ft (Original Well Elev)
<b>Site Error:</b>	0.0ft	<b>North Reference:</b>	True
<b>Reference Well:</b>	SRC Olson 32-3D	<b>Survey Calculation Method:</b>	Minimum Curvature
<b>Well Error:</b>	0.0ft	<b>Output errors are at</b>	2.00 sigma
<b>Reference Wellbore</b>	Wellbore #1	<b>Database:</b>	Landmark
<b>Reference Design:</b>	Plan #1 (6-29-12)	<b>Offset TVD Reference:</b>	Offset Datum

Reference Depths are relative to WELL @ 5055.0ft (Original Well Elev) Coordinates are relative to: SRC Olson 32-3D  
Offset Depths are relative to Offset Datum Coordinate System is US State Plane 1983, Colorado Northern Zone  
Central Meridian is -105.500000 ° Grid Convergence at Surface is: 0.33°

