

**QUICKSILVER RESOURCES INC-EBUSINESS
DO NOT MAIL-801 CHERRY ST
FORT WORTH, Texas**

SIMOES 22-30

DHS 6

Post Job Summary **Cement Surface Casing**

Prepared for:
Date Prepared: 06/18/2012
Version: 1

Service Supervisor:

Submitted by:M.C Dube

HALLIBURTON

HALLIBURTON

Wellbore Geometry

Job Tubulars					MD		Shoe Joint Length ft
Type	Description	Size in	ID in	Wt lbm/ft	Top ft	Bottom ft	
Open Hole Section	Surface Open Hole		12.250		0.00	1,200.00	0.00
Casing	Surface Casing	9.63	8.921	36.00	0.00	1,200.00	40.00

Pumping Schedule

Fluid #	Fluid Type	Fluid Name	Density lbm/gal	Avg Rate bbl/min	Volume bbl
1	Spacer	Fresh Water	8.34	4.00	10.0
2	Spacer	SUPER FLUSH 101	10.00	4.00	20.0
3	Spacer	Fresh Water	8.34	2.00	15.0
4	Cement Slurry	VariCem V1	12.30	6.00	81.2
5	Cement Slurry	VariCem V1	13.50	6.00	62.3
6	Mud	Displacement	0.00	6.00	84.8

HALLIBURTON

Fluids Pumped

Stage/Plug # 1 **Fluid 1:** Fresh Water
FRESH WATER

Fluid Density: 8.34 lbm/gal
Pump Rate: 4.00 bbl/min

Stage/Plug # 1 **Fluid 2:** SUPER FLUSH 101
SUPER FLUSH 101 - SBM (12199)

Fluid Density: 10.00 lbm/gal
Pump Rate: 4.00 bbl/min

Stage/Plug # 1 **Fluid 3:** Fresh Water
FRESH WATER

Fluid Density: 8.34 lbm/gal
Pump Rate: 2.00 bbl/min

Stage/Plug # 1 **Fluid 4:** VariCem V1
VARICEM (TM) CEMENT
0.125 lbm Poly-E-Flake
5 lbm Kol-Seal

Fluid Weight: 12.30 lbm/gal
Slurry Yield: 2.28 ft³/sack
Total Mixing Fluid: 12.78 Gal
Calculated Fill: 700.00 ft
Calculated Top of Fluid: 0.00 ft
Pump Rate: 6.00 bbl/min

Stage/Plug # 1 **Fluid 5:** VariCem V1
VARICEM (TM) CEMENT
0.125 lbm Poly-E-Flake
5 lbm Kol-Seal

Fluid Weight: 13.50 lbm/gal
Slurry Yield: 1.75 ft³/sack
Total Mixing Fluid: 8.83 Gal
Calculated Fill: 500.00 ft
Calculated Top of Fluid: 700.00 ft
Pump Rate: 6.00 bbl/min

Stage/Plug # 1 **Fluid 6:** Displacement

Fluid Density: 8.34 lbm/gal
Pump Rate: 6.00 bbl/min

Service Supervisor Reports

Activity Description	Date/Time	Rate bbl/min	Volume bbl	Pressure psig	Comments
Call Out	06/05/2012 20:00				HES CEMENT CREW OUT OF GRAND JUNCTION
Pre-Convoy Safety Meeting	06/05/2012 22:15				ALL HES CEMENT CREW
Crew Leave Yard	06/05/2012 22:30				CREW TO GO TO VERNAL TO RETRIEVE BULK EQUIPMENT AND JOB PACKET
Arrive At Loc	06/06/2012 08:00				RIG RIGGING UP CASING CREW
Assessment Of Location Safety Meeting	06/06/2012 08:10				ALL HES CEMENT CREW
Other	06/06/2012 08:48				SPOT EQUIPMENT; 1 CEMENTERS F 550, 1 ELITE PUMPING UNIT, 1 660 BULK TRANSPORT, 1 400 BULK TRANSPORT
Pre-Rig Up Safety Meeting	06/06/2012 08:48				ALL HES CEMENT CREW
Pre-Job Safety Meeting	06/06/2012 08:48				ALL HES CEMENT CREW, RIG CREW, COMPANY REP, AVAILABLE 3RD PARTY EE'S
Start Job	06/06/2012 16:33				TD- 1250' TP- 1250' SHOE- 45' OH- 12.25" SURFACE CASING- 9.625" 36#/FT I-80 MUD- 10.2 PPG
Other	06/06/2012 16:34	2	2	43.0	FILL LINES, FRESH WATER
Pressure Test	06/06/2012 16:36				STALL OUT @ 2027 PSI, HELD FOR 30 SEC. PRESSURE UP TO 3797 PSI HELD FOR 3 MIN, PRESSURE DROP TO 3836 PSI
Pump Spacer 1	06/06/2012 16:44	4	10	100.0	FRESH WATER
Pump Spacer 2	06/06/2012 16:49	4	20	98.0	SUPEFLUSH, POWDER MIXED USING RCM III
Pump Spacer 1	06/06/2012 16:59	2	15	68.0	FRESH WATER
Pump Lead Cement	06/06/2012 17:08	6	81.2	293.0	200 SKS; 12.3 PPG, 2.28 FT3/SK, 12.78 GAL/SK
Pump Tail Cement	06/06/2012 17:28	6	62.3	311.0	200 SKS; 13.5 PPG, 1.75 FT3/SK, 8.83 GAL/SK
Shutdown	06/06/2012 17:43				WASH UP ON TOP OF PLUG PER CO REP
Drop Top Plug	06/06/2012 17:49				CO REP VERIFIED PLUG LAUNCHED
Pump Displacement	06/06/2012 17:49	8	84.8	462.0	FRESH WATER, RATE ADJUSTED PER CO REP

HALLIBURTON

Slow Rate	06/06/2012 18:07	4	10	491.0	
Bump Plug	06/06/2012 18:08			992.0	
Check Floats	06/06/2012 18:11				FLOATS HELD, RETURNED 1/2 BBLS H2O
End Job	06/06/2012 18:12				PIPE WAS RECIPROCATED, GOOD RETURNS THROUGHOUT, 30 BBLS CEMENT TO SURFACE
Post-Job Safety Meeting (Pre Rig- Down)	06/06/2012 18:15				ALL HES CEMENT CREW
Pre-Convoy Safety Meeting	06/06/2012 20:15				ALL HES CEMENT CREW
Crew Leave Location	06/06/2012 20:30				THANK YOU FOR USING HALLIBURTON CEMENTING, RYON NICKLE AND CREW

The Road to Excellence Starts with Safety

Sold To #: 346707	Ship To #: 2931551	Quote #:	Sales Order #: 9571703
Customer: QUICKSILVER RESOURCES INC-EBUSINESS		Customer Rep:	
Well Name: SIMOES		Well #: 22-30	API/UWI #:
Field:	City (SAP): CRAIG	County/Parish: Moffat	State: Colorado
Contractor: DHS		Rig/Platform Name/Num: 6	
Job Purpose: Cement Surface Casing			
Well Type: Exploratory / Wildcat		Job Type: Cement Surface Casing	
Sales Person: SCOTT, KYLE	Srvc Supervisor: NICKLE, RYON		MBU ID Emp #: 454759

Job Personnel

HES Emp Name	Exp Hrs	Emp #	HES Emp Name	Exp Hrs	Emp #	HES Emp Name	Exp Hrs	Emp #
BLUST, CHARLES Thomas	12.5	386662	BORSZICH, STEPHEN A	12.5	412388	NICKLE, RYON	12.5	454759
ROSE, BENJAMIN Keith	12.5	487022						

Equipment

HES Unit #	Distance-1 way	HES Unit #	Distance-1 way	HES Unit #	Distance-1 way	HES Unit #	Distance-1 way
10248059	120 mile	10951249	120 mile	11305570	120 mile	11320813	120 mile
11560046	120 mile	11808833	120 mile				

Job Hours

Date	On Location Hours	Operating Hours	Date	On Location Hours	Operating Hours	Date	On Location Hours	Operating Hours
6/6/12	12.5	2						

TOTAL	Total is the sum of each column separately							
-------	--	--	--	--	--	--	--	--

Job

Formation Name					Date	Time	Time Zone
Formation Depth (MD)	Top	0	Bottom	1250	Called Out	05 - Jun - 2012	20:00 MST
Form Type	BHST				On Location	06 - Jun - 2012	08:00 MST
Job depth MD	1250. ft		Job Depth TVD	1250. ft	Job Started	06 - Jun - 2012	16:33 MST
Water Depth			Wk Ht Above Floor	5. ft	Job Completed	06 - Jun - 2012	18:12 MST
Perforation Depth (MD)	From		To		Departed Loc	06 - Jun - 2012	20:30 MST

Well Data

Description	New / Used	Max pressure psig	Size in	ID in	Weight lbm/ft	Thread	Grade	Top MD ft	Bottom MD ft	Top TVD ft	Bottom TVD ft
Surface Open Hole				12.25				.	1200.		
Surface Casing	Unknown		9.625	8.921	36.		J-55	.	1200.		

Sales/Rental/3rd Party (HES)

Description	Qty	Qty uom	Depth	Supplier
PLUG,CMTG,TOP,9 5/8,HWE,8.16 MIN/9.06 MA	1	EA		

Tools and Accessories

Type	Size	Qty	Make	Depth	Type	Size	Qty	Make	Depth	Type	Size	Qty	Make
Guide Shoe					Packer					Top Plug	9.625	1	HES
Float Shoe					Bridge Plug					Bottom Plug			
Float Collar					Retainer					SSR plug set			
Insert Float										Plug Container	9.625	1	HES

HALLIBURTON

Lab Data

LAB RESULTS- LEAD

Job Information

Request/Slurry	244150/1	Rig Name	DHS DRILLING #6	Date	05/JUN/2012
Submitted By	Charli Brown	Job Type	Surface Casing	Bulk Plant	Vernal
Customer	Quicksilver Resources Inc.	Location	Moffat	Well	Simoes 22-30

Well Information

Casing/Liner Size	9 5/8"	Depth MD	1200 ft	BHST	97 F
Hole Size	12 1/4"	Depth TVD	1200 ft	BHCT	82 F

Drilling Fluid Information

Mud Supplier Name	Mud Trade Name	Density
-------------------	----------------	---------

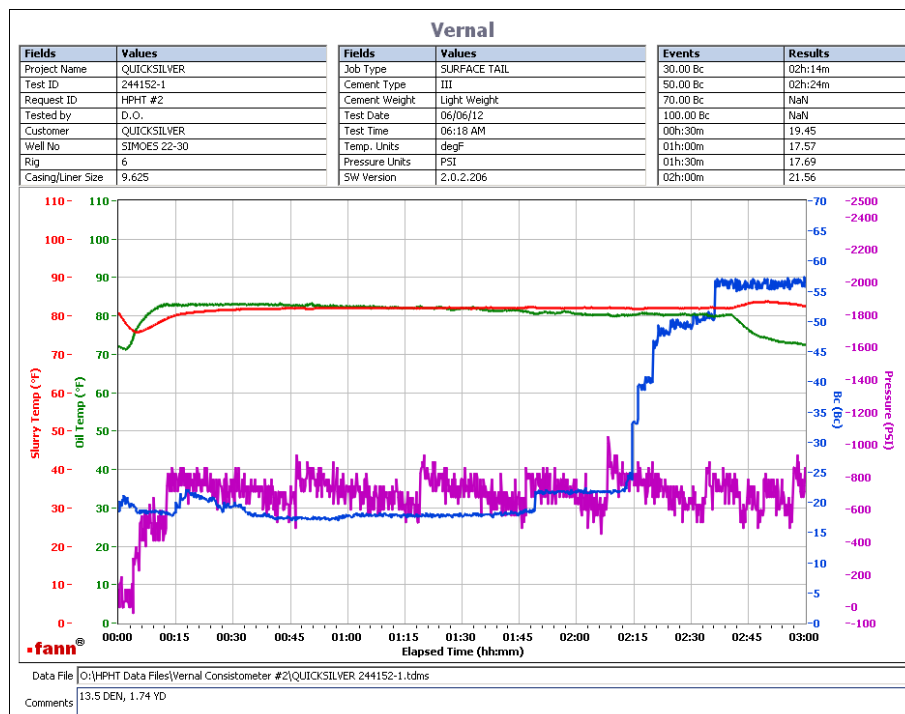
Cement Information - Lead Design

Conc	UOM	Cement/Additive	Sample Type	Sample Date	Lot No.	Cement Properties		
						Slurry Density	12.30	PPG
						Slurry Yield	2.26	ft3/sk
100.00	% BWOC	Cement Blend	Bulk	Jun 05, 2012	1000012	Water Requirement	12.61	GPS
					229	Total Mix Fluid	12.61	GPS
5.000	lb/sk	Kol-Seal	Bulk	Jun 05, 2012	4/20/201	Water Source	Field (Fresh) Water	
					2	Water Chloride	N/A	ppm
12.61	gal/sack	Field (Fresh) Water	Bulk	May 25, 2012				

Operation Test Results Request ID 244150/1

Thickening Time

Temp (°F)	Pressure (psi)	Reached in (min)	Start BC	30 Bc (hh:mm)	50 Bc (hh:mm)	70 Bc (hh:mm)	100 Bc (hh:mm)
82	798	14	8	02:56	03:12	03:18	03:23



Cementing Rockies, Vernal

LAB RESULTS - Tail

Job Information

Request/Slurry	244152/1	Rig Name	DHS DRILLING #6	Date	05/JUN/2012
Submitted By	Charli Brown	Job Type	Surface Casing	Bulk Plant	Vernal
Customer	Quicksilver Resources Inc.	Location	Moffat	Well	Simoes 22-30

Well Information

Casing/Liner Size	9 5/8"	Depth MD	1200 ft	BHST	96 F
Hole Size	12 1/4"	Depth TVD	1200 ft	BHCT	82 F

Drilling Fluid Information

Mud Supplier Name	Mud Trade Name	Density
-------------------	----------------	---------

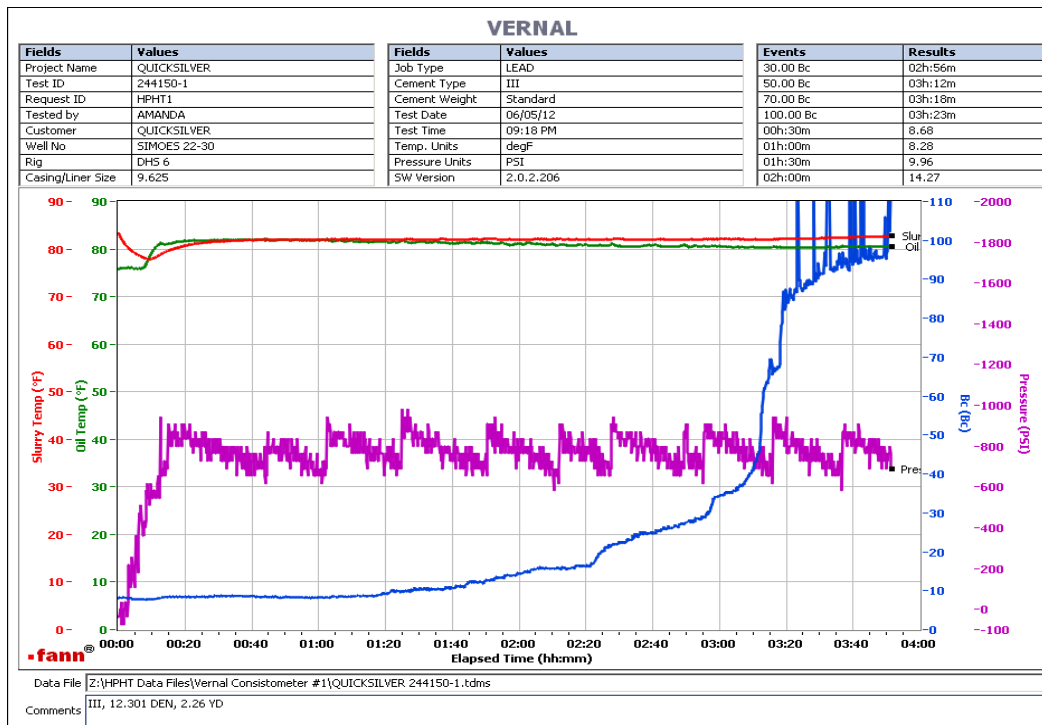
Cement Information - Tail Design

Conc	UOM	Cement/Additive	Sample Type	Sample Date	Lot No.	Cement Properties		
100.00	% BWOC	Cement Blend	Bulk	Jun 05, 2012		Slurry Density	13.50	PPG
0.125	lb/sk	Pol-E-Flake	Bulk	Jun 05, 2012	4-10-2012	Slurry Yield	1.74	ft3/sk
5.000	lb/sk	Kol-Seal	Bulk	Jun 05, 2012	4-20-2012	Water Requirement	8.68	GPS
8.68	gal/sack	Field (Fresh) Water	Bulk	May 25, 2012		Total Mix Fluid	8.68	GPS
						Water Source	Field (Fresh) Water	
						Water Chloride	N/A	ppm

Operation Test Results Request ID 244152/1

Thickening Time

Temp (°F)	Pressure (psi)	Reached in (min)	Start BC	30 Bc (hh:mm)	50 Bc (hh:mm)	Termination Time	Termination BC
82	800	14	18	02:14	02:24	07:43	48

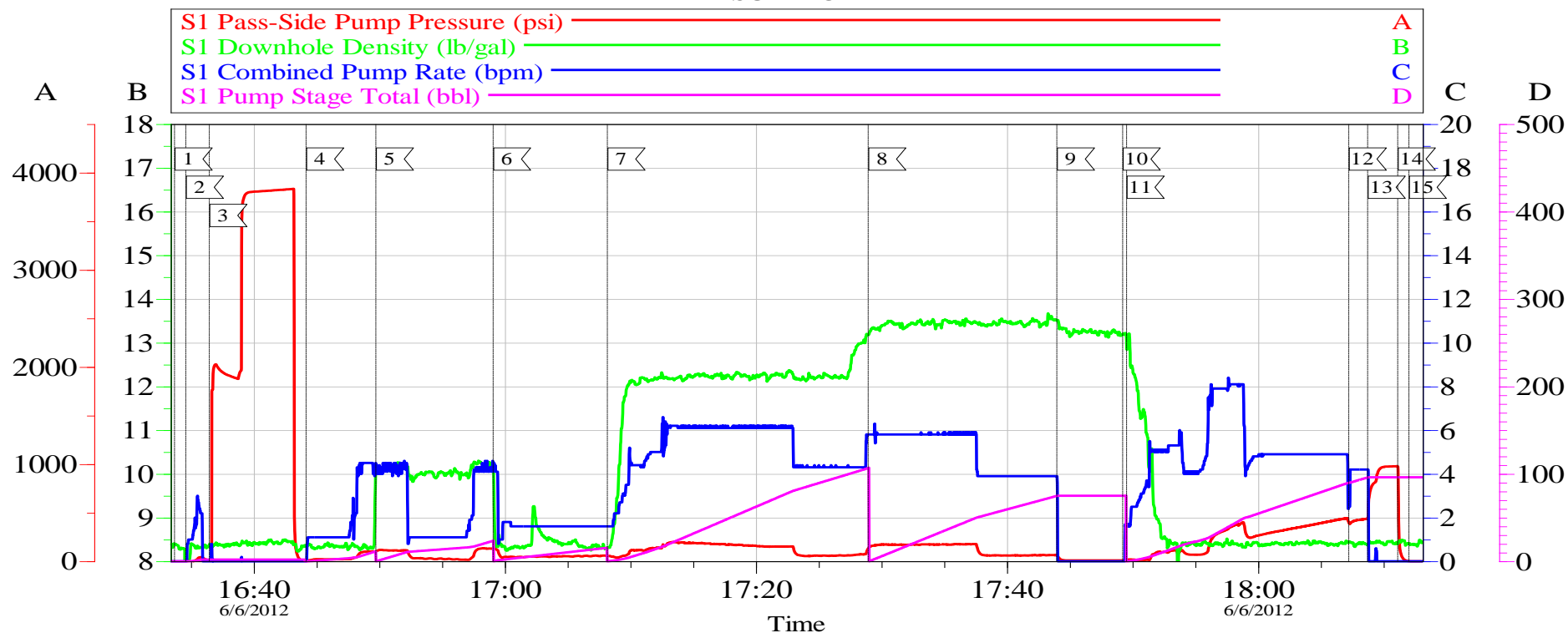


HALLIBURTON

Data Acquisition

QUICKSILVER RESOURCES - SIMOES 22-30

SURFACE



Local Event Log

1 START JOB	16:33:41	2 FILL LINES	16:34:35	3 PRESSURE TEST	16:36:28
4 H2O SPACER	16:44:10	5 SUPER FLUSH	16:49:43	6 H2O SPACER	16:59:04
7 LEAD CEMENT	17:08:10	8 TAIL CEMENT	17:28:56	9 SHUTDOWN	17:43:58
10 DROP TOP PLUG	17:49:13	11 PUMP DISPLACEMENT	17:49:31	12 SLOW RATE	18:07:13
13 BUMP PLUG	18:08:44	14 CHECK FLOATS	18:11:07	15 END JOB	18:12:00

Customer: QUICKSILVER RESOURCES INC-EBUSINESS
Well Description: SIMOES 22-30
Company Rep:

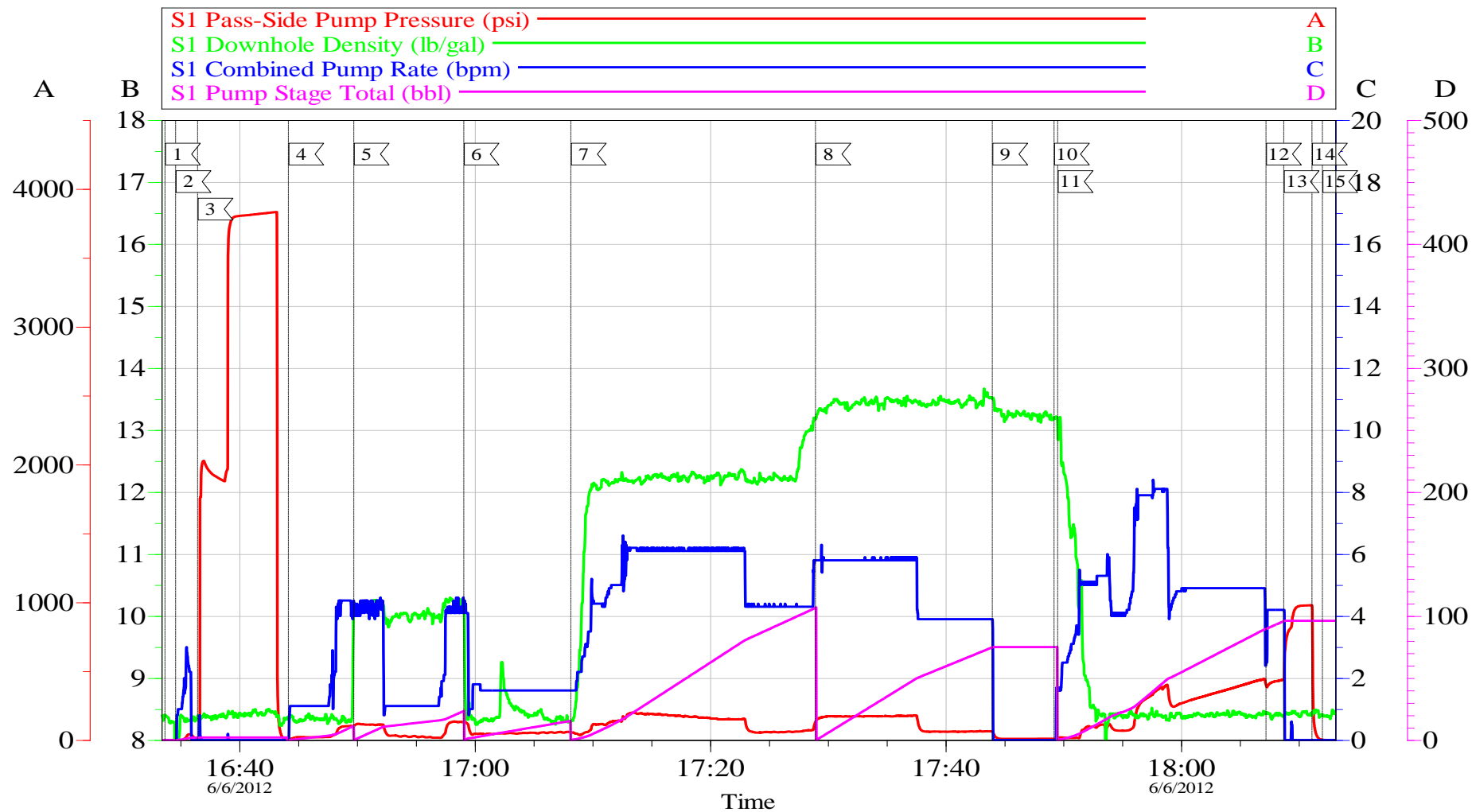
Job Date: 06-Jun-2012
Job Type: SURFACE
Cement Supervisor: RYON NICKLE

Sales Order #: 9571703
ADC Used: YES
Elite # / Operator: E5 / BEN ROSE

OptiCem v6.4.10
06-Jun-12 18:55

QUICKSILVER RESOURCES - SIMOES 22-30

SURFACE



Customer: QUICKSILVER RESOURCES INC-EBUSINESS
Well Description: SIMOES 22-30
Company Rep:

Job Date: 06-Jun-2012
Job Type: SURFACE
Cement Supervisor: RYON NICKLE

Sales Order #: 9571703
ADC Used: YES
Elite # / Operator: E5 / BEN ROSE

OptiCem v6.4.10
06-Jun-12 18:56