

T8S, R100W, 6th P.M.

C.C. 1919 Brass Cap
2.3' High
Lat: 39.382344°
Long: 108.489022°

N89°58'04"E - 4308.16' (Meas.)

1919 Brass Cap
0.6' High
Lat: 39.382339°
Long: 108.504258°

COCO 012653

A.P. 1919 Brass Cap
2.2' High
Lat: 39.381967°
Long: 108.489092°

LOT 1

N00°10'29"E - 2637.73' (Meas.)

NOTE:
THE START OF PRODUCING INTERVAL FOR
THIS WELL IS LOCATED IN LOT 13 OF
SECTION 7, T8S, R99W, 6th P.M. AT A
DISTANCE OF 775' FSL 958' FWL. IT BEARS
S64°09'41"E 1444.55' FROM THE PROPOSED
WELL HEAD.

S89°36'50"E - 3955.45' (Meas. To True)
S89°36'50"E - 3949.64' (Meas. To C.C.)

1919 Brass Cap
2.1' High
Lat: 39.375097°
Long: 108.504283°

NOTE:
THE PROPERTY LINE IS LOCATED NORTH
288' FROM THE PROPOSED WELL HEAD.

12

C.C. 1919 Brass Cap
0.6' High
Lat: 39.375025°
Long: 108.490319°

LOT 3

DHS10C-18 012 8100

Elev. Ungraded Ground = 6723.3'

Elev. Graded Ground = 6724.7'

LOT 4

415'

1031'

N89°51'09"W - 3607.30' (Meas. To True)
N89°51'09"W - 3612.68' (Meas. To C.C.)

1919 Brass Cap
0.4' High
Lat: 39.367819°
Long: 108.504308°

LEGEND:

└─┘ = 90° SYMBOL

● = PROPOSED WELL HEAD.

▲ = SECTION CORNERS LOCATED.

△ = SECTION CORNERS RE-ESTAB.
(Not Set on Ground)

PDOP = 1.3

NAD 83 (SURFACE LOCATION)

LATITUDE = 39°22'14.26" (39.370628)
LONGITUDE = 108°29'33.15" (108.492542)

NAD 27 (SURFACE LOCATION)

LATITUDE = 39°22'14.34" (39.370650)
LONGITUDE = 108°29'30.82" (108.491894)

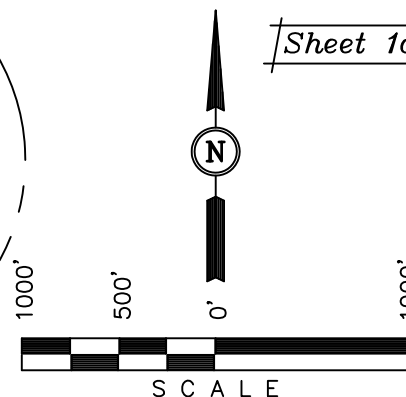
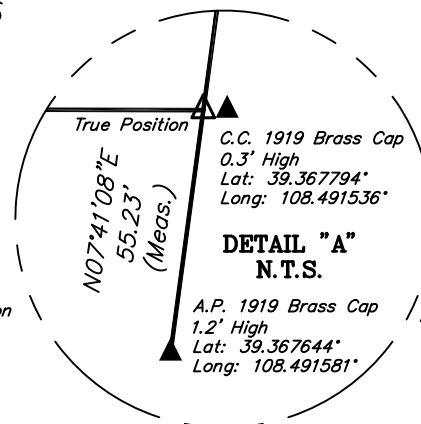
Encana OIL & GAS (USA) INC.

Well location, DHS10C-18 012 8100 (SURFACE LOCATION), located as shown in LOT 4 of Section 12, T8S, R100W, 6th P.M., Garfield County, Colorado.

VERTICAL CONTROL DATUM: NAVD88

[Derived from: N.G.S. O.P.U.S. Solution]

NOTE:
SEE SHEET 6A FOR EXISTING IMPROVEMENTS
WITHIN 400' OF THE PROPOSED WELL
DISTURBANCE.



Sheet 1a of 10

CERTIFICATE

THIS IS TO CERTIFY THAT THE ABOVE PLAT WAS PREPARED AND LOCATION AS SHOWN WAS STAKED ON THE GROUND FROM FIELD NOTES OF ACTUAL SURVEYS MADE BY ME OR UNDER MY SUPERVISION AND THAT THE SAME ARE TRUE AND CORRECT TO THE BEST OF MY KNOWLEDGE AND BELIEF.

REGISTERED LAND SURVEYOR
REGISTRATION NO. 17492
STATE OF COLORADO
08-01-12

UINTAH ENGINEERING & LAND SURVEYING
85 SOUTH 200 EAST - VERNAL, UTAH 84078
(435) 789-1017

SCALE 1" = 1000'	DATE SURVEYED: 04-14-12	DATE DRAWN: 06-01-12
PARTY B.J. T.M. T.B.	REFERENCES G.L.O. PLAT	
WEATHER COOL	FILE Encana OIL & GAS (USA) INC.	

Well location, DHS10C-18 012 8100 (START OF PRODUCING INTERVAL), located as shown in LOT 13 of Section 7, T8S, R99W, 6th P.M., Garfield County, Colorado.

T8S, R99W, 6th P.M.

WEST - 6553.80' (G.L.O.)

COCO 012646

VERTICAL CONTROL
DATUM: NAVD88

[Derived from:
N.G.S. O.P.U.S. Solution]

LEGEND:

- └ = 90° SYMBOL
- = PROPOSED WELL HEAD.
- ▲ = SECTION CORNERS LOCATED.
- △ = SECTION CORNERS RE-ESTAB.
(Not Set on Ground)

NOTE:
THE PROPOSED BOTTOM HOLE IS LOCATED
IN THE LOT 23 OF SECTION 18, T8S, R99W,
6th P.M. AT A DISTANCE OF 650' FSL 807'
FWL. IT BEARS S00°14'12"W 5399.20' FROM
THE START OF PRODUCING INTERVAL.



SCALE

N00°03'W - 5280.00' (G.L.O.)

Sheet 1b of 10

NOTE:
THE LEASE LINE IS LOCATED SOUTH
775' FROM THE PROPOSED START OF
PRODUCING INTERVAL.

DHS10C-18 012 8100
START OF PRODUCING
INTERVAL

LOT 13

N89°55'08"E - 4543.88' (Meas. To True)
N89°55'08"E - 4545.08' (Meas. To C.C.)

CERTIFICATE

THIS IS TO CERTIFY THAT THE ABOVE PLAT WAS PREPARED AND
LOCATION AS SHOWN WAS STAKED ON THE GROUND FROM FIELD
NOTES OF ACTUAL SURVEYS MADE BY ME OR UNDER MY
SUPERVISION AND THAT THE SAME ARE TRUE AND CORRECT TO
THE BEST OF MY KNOWLEDGE AND BELIEF.

REGISTERED LAND SURVEYOR
REGISTRATION NO. 17492
STATE OF COLORADO

1930 G.L.O. Brass Cap
Flush W/ Ground,
T-Post
Lat: 39.366786°
Long: 108.475525°

WEST - 2640.00' (G.L.O.)

UINTAH ENGINEERING & LAND SURVEYING
85 SOUTH 200 EAST - VERNAL, UTAH 84078
(435) 789-1017

SCALE 1" = 1000'	DATE SURVEYED: 04-14-12	DATE DRAWN: 06-01-12
PARTY B.J. T.M. T.B.	REFERENCES G.L.O. PLAT	
WEATHER COOL	FILE Encana OIL & GAS (USA) INC.	

NAD 83 (START OF PRODUCING INTERVAL)		
LATITUDE =	39°22'08.04"	(39.368900)
LONGITUDE =	108°29'16.60"	(108.487944)
NAD 27 (START OF PRODUCING INTERVAL)		
LATITUDE =	39°22'08.12"	(39.368922)
LONGITUDE =	108°29'14.27"	(108.487297)

A.P. 1919 Brass Cap
2.2' High
Lat: 39.381967°
Long: 108.489092°

True Position

C.C. 1930 Brass Cap
Lat: 39.381294°
Long: 108.489200°

R
100
W

S07°41'10"W - 5265.39' (Meas.)

LOT 6

LOT 5

LOT 7

LOT 8

LOT 11

LOT 10

LOT 9

LOT 12

A.P. 1919
Brass Cap
1.2' High
Lat: 39.367644°
Long: 108.491581°

True Position

N00°26'50"E
319.00' (Meas.)
S00°26'50"W
1006.94' (Meas.)

A.P. 2 TR 46
1919 Brass Cap
1.5' High
Lat: 39.366769°
Long: 108.491594°
C.C. 1919
Brass Cap
1.5' High
Lat: 39.366769°
Long: 108.491594°

A.P. 1919
Brass Cap
1.2' High
Lat: 39.367644°
Long: 108.491581°

T8S, R99W, 6th P.M.

N89°55'08"E - 4543.88' (Meas. To True)

N89°55'08"E - 4545.08' (Meas. To C.C.)

Encana OIL & GAS (USA) INC.

Well location, DHS10C-18 012 8100 (TARGET BOTTOM HOLE), located as shown in LOT 23 of Section 18, T8S, R99W, 6th P.M., Garfield County, Colorado.

WEST - 2640.00' (G.L.O.)

VERTICAL CONTROL
DATUM: NAVD88

[Derived from:
N.G.S. O.P.U.S. Solution]

Sheet 1c of 10



CERTIFICATE

THIS IS TO CERTIFY THAT THE ABOVE PLAT WAS PREPARED AND LOCATION AS SHOWN NOTES OF ACTUAL SURVEYS MADE BY ME OR UNDER MY SUPERVISION AND THAT THE SAME ARE TRUE AND CORRECT TO THE BEST OF MY KNOWLEDGE AND BELIEF.

REGISTERED LAND SURVEYOR
REGISTRATION NO. 17492
STATE OF COLORADO
06-01-12

LEGEND:

- └─ = 90° SYMBOL
- = PROPOSED WELL HEAD.
- ▲ = SECTION CORNERS LOCATED.
- △ = SECTION CORNERS RE-ESTAB.
(Not Set on Ground)

UINTAH ENGINEERING & LAND SURVEYING
85 SOUTH 200 EAST - VERNAL, UTAH 84078
(435) 789-1017

SCALE 1" = 1000'	DATE SURVEYED: 04-14-12	DATE DRAWN: 06-01-12
PARTY B.J. T.M. T.B.	REFERENCES G.L.O. PLAT	
WEATHER COOL	FILE Encana OIL & GAS (USA) INC.	

TRACT 46

TRACT 47

18

NOTE:
THE TARGET BOTTOM HOLE BEARS
S00°14'12"W 5399.20' FROM THE START OF
PRODUCING INTERVAL WHICH IS LOCATED IN
LOT 13 OF SECTION 7, T8S, R99W, 6th P.M.
AT A DISTANCE OF 775' FSL 958' FWL.

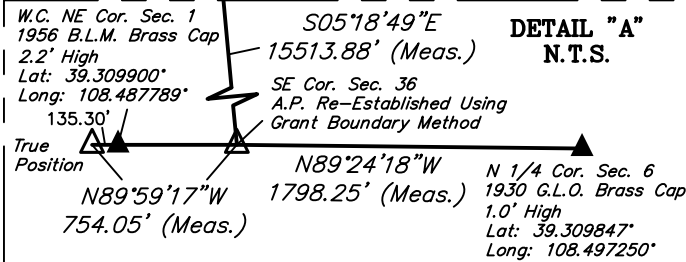
NOTE:
THE LEASE LINE IS LOCATED SOUTH
650' FROM THE TARGET BOTTOM HOLE.

DHS10C-18 012 8100
TARGET BOTTOM HOLE

COCO 012750

COCO 027498

**DETAIL "A"
N.T.S.**



NAD 83 (TARGET BOTTOM HOLE)	
LATITUDE = 39°21'14.69"	(39.354081)
LONGITUDE = 108°29'16.89"	(108.488025)
NAD 27 (TARGET BOTTOM HOLE)	
LATITUDE = 39°21'14.77"	(39.354103)
LONGITUDE = 108°29'14.56"	(108.487378)