

WELLBORE DIAGRAM
PROPOSED P&A WBD

2440' FSL & 665' FEL

Operator: Koch Exploration Company
Well Name: WRD Fed 21-9
Lease Number: COC-100022
Location: NESE Sec 21 T2N R97W
Field: White River Dome
County, State: Rio Blanco, CO
API Number: 05-103-09714
Diagram Date: 7/2/2012

KB 5762'

GL 5750'

Proposed Plugging Procedure

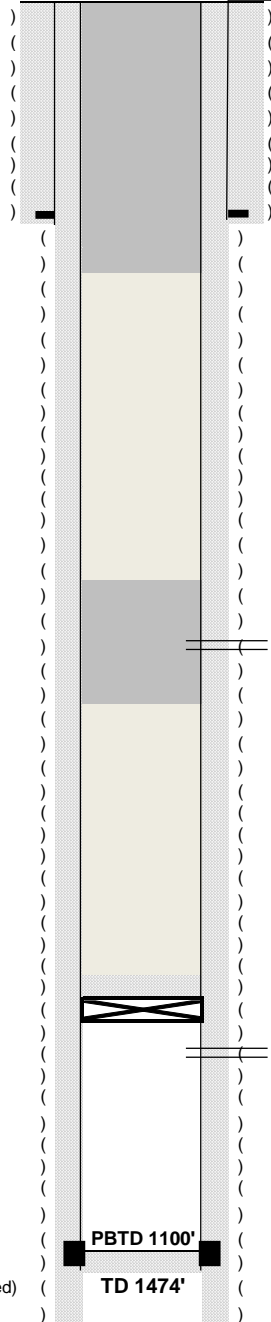
9 5/8" 36# csg @ 52'
3.5 yards Redi-mix

7" 23# K55 STC csg set @ 444'
150 sks Class G

TOC @ Surface
(CBL from 9/14/1994)

CIBP set @ 1121' w/ 21' cmt on top

4-1/2" 10.5# K55 STC (used, inspected)
csg landed @ 1474'
175 sks Class G



- 1 MIRU
- 2 Tag CIBP @ 1100'
- 3 Spot plug from 675-825' w/ 12sks to cover WS perfs
- 4 Pressure test csg to 500# for 15mins
- 5 Plug remainder of hole from 500' to surface w/ 40sks
- 6 Cut off WH and install dryhole marker

748-753'

No stimulation; natural completion

1162-1168'

No stimulation; tested wet w/ light gas