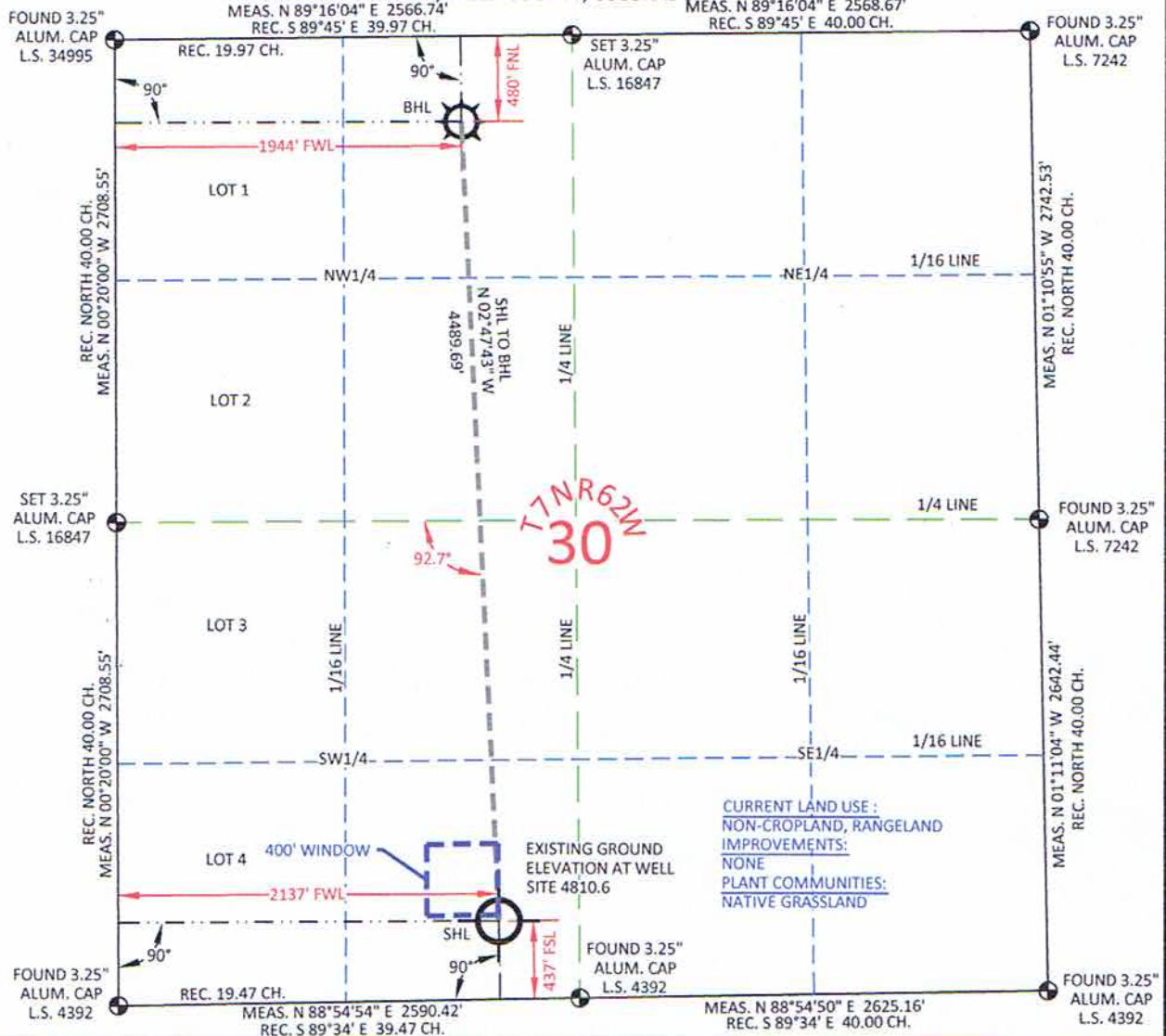


MARATHON OIL CO. CROW VALLEY 7-62-30-2H AS-DRILLED WELL LOCATION PLAT

LOCATED WITHIN THE SE1/4 SW1/4, SECTION 30, T7N, R62W

OF THE 6TH P.M., WELD COUNTY, COLORADO



CURRENT LAND USE:
NON-CROPLAND, RANGELAND
IMPROVEMENTS:
NONE
PLANT COMMUNITIES:
NATIVE GRASSLAND

SURFACE HOLE LOCATION

GEOGRAPHIC	DEC. DEG.	LAT.	40.538783°
GEOGRAPHIC	DEC. DEG.	LONG.	104.367166°
GEOGRAPHIC	DEC. DEG.	LAT.	40.538801°
GEOGRAPHIC	DEC. DEG.	LONG.	104.366659°
GEOGRAPHIC	DEC. DEG.	LAT.	40°32'19.62"
GEOGRAPHIC	DEC. DEG.	LONG.	104°22'01.80"
GEOGRAPHIC	DEC. DEG.	LAT.	40°32'19.68"
GEOGRAPHIC	DEC. DEG.	LONG.	104°21'59.97"
STATE PLANE	COORD.	NORTH	1441130.64
STATE PLANE	COORD.	EAST	3314851.44
STATE PLANE	COORD.	NORTH	441131.14
STATE PLANE	COORD.	EAST	2315000.86

FOOTAGE: 2137' FWL - 437' FSL

BOTTOM HOLE LOCATION

GEOGRAPHIC	DEC. DEG.	LAT.	40.551099°
GEOGRAPHIC	DEC. DEG.	LONG.	104.367748°
GEOGRAPHIC	DEC. DEG.	LAT.	40.551117°
GEOGRAPHIC	DEC. DEG.	LONG.	104.367240°
GEOGRAPHIC	DEC. DEG.	LAT.	40°33'03.96"
GEOGRAPHIC	DEC. DEG.	LONG.	104°22'03.89"
GEOGRAPHIC	DEC. DEG.	LAT.	40°33'04.02"
GEOGRAPHIC	DEC. DEG.	LONG.	104°22'02.06"
STATE PLANE	COORD.	NORTH	1445614.99
STATE PLANE	COORD.	EAST	3314632.50
STATE PLANE	COORD.	NORTH	445615.41
STATE PLANE	COORD.	EAST	2314781.89

FOOTAGE: 1944' FWL - 480' FNL

MEASURE DATE: 5/31/2012

INSTRUMENT OPERATOR: LAUREN VANCE

PDOP: 1.6

SHL GRND ELEV.: 4810.6

I, Rodney A. Walters, Professional Land Surveyor, CO PLS #16847 hereby certify that (in accordance with a request from Anna Walls with Marathon Oil Co, 5555 San Felipe, Houston, TX 77056) I and or personnel under my direction made a survey on the 31st day of May 2012, for the Surface Hole Location and Elevation of Marathon Oil Co. Crow Valley 7-62-30-2H being located in the SE1/4 SW1/4, Section 30, T7N, R62W, and the Bottom Hole Location being located in the NE1/4 NW1/4 of Section 30, T7N, R62W, both being of the 6th P.M., Weld County, State of Colorado.

- All bearings and distances are GRID, based on the Colorado State Plane Coordinate System, North Zone, North American Datum 1983 from GPS observations occupying a WHS control point (5/8" rebar) and having the Location and Elevation derived from an Opus Solution.
- Vertical Datum used is of NAVD 88.
- Record Bearings and Distances as shown are based on the General Land Office Survey plat approved on the 16th day of December 1872.
- Geographic coordinates for the bottom hole location were taken from the wellpath report prepared by Baker Hughes for Crow Valley 7-62-28-4H and dated 5/22/2012.



CONFIDENTIALITY NOTES:

The information contained in this plat is legally privileged and confidential information intended only for the use of the recipients. If you are not the intended recipients, you are hereby notified that any use, dissemination, distribution or copying of this information is strictly prohibited.



WILLIAM H. SMITH & ASSOCIATES P.C.
SURVEYING CONSULTANTS

350 EAST SECOND NORTH
GREEN RIVER, WY 80430
PHONE: 307-875-3638
307-875-3639
www.williamsmithpc.com

DRAWN BY: LAL

CHECKED BY: RAW

PROJECT NO: 762302H

JOB NO: 2011001

REVISIONS:

LEGEND

- FOUND/SET CORNER
- ⊗ CALCULATED CORNER
- NOTHING FOUND

LOCATION:

CROW VALLEY 7-62-30-2H
WITHIN THE SE1/4 SW1/4,
SECTION 30, T 7 N, R 62 W,
6TH PM.
WELD COUNTY,
COLORADO

MARATHON OIL COMPANY

PO BOX 3128, HOUSTON TX, 77253
5555 SAN FELIPE, HOUSTON TX, 77056

AS-DRILLED
WELL LOCATION PLAT

SCALE: 1"=1000'

EXHIBIT "A"

DATE: 6/18/2012

SHEET 1 OF 1