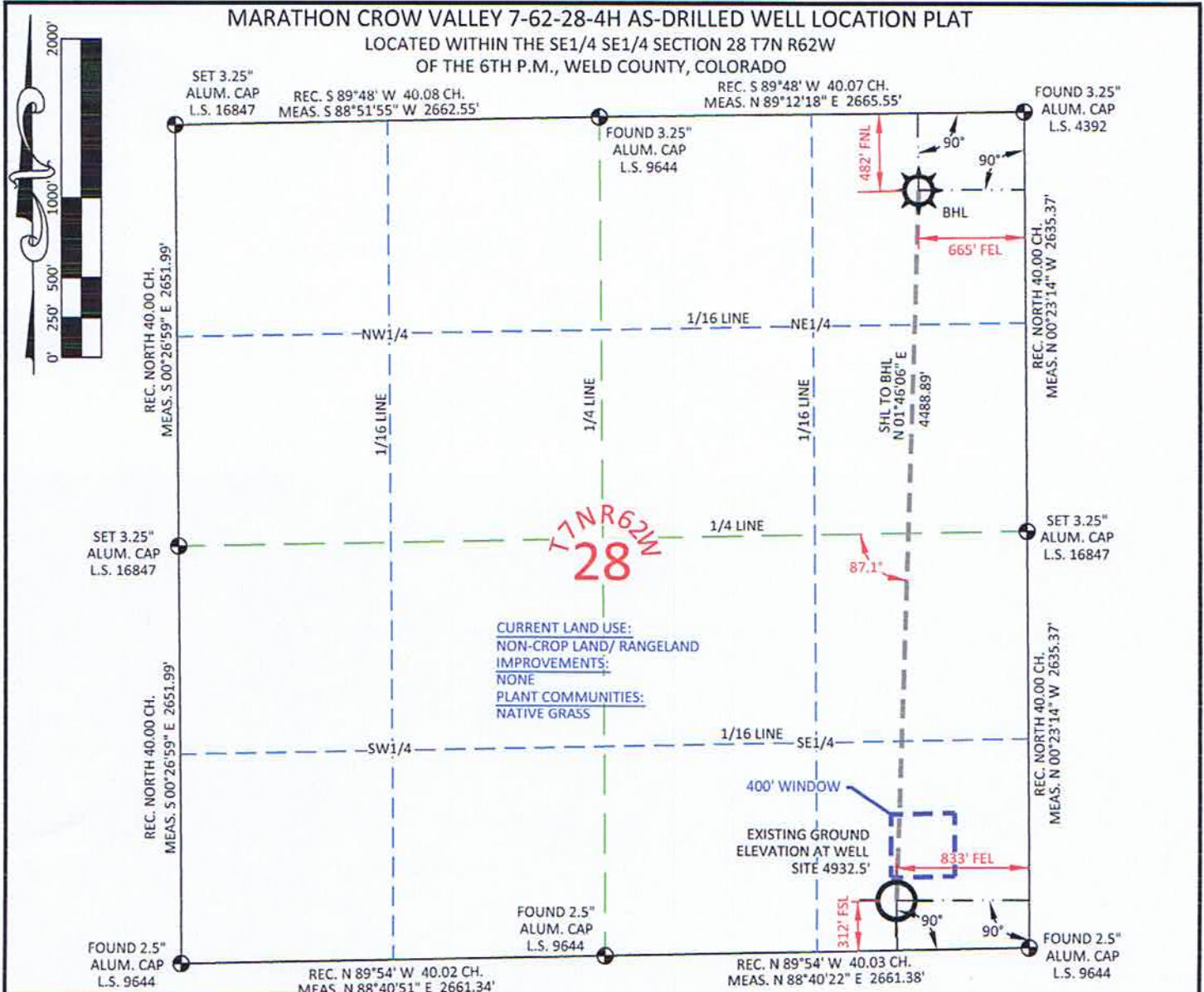


# MARATHON CROW VALLEY 7-62-28-4H AS-DRILLED WELL LOCATION PLAT

LOCATED WITHIN THE SE1/4 SE1/4 SECTION 28 T7N R62W

OF THE 6TH P.M., WELD COUNTY, COLORADO



CURRENT LAND USE:  
NON-CROP LAND/ RANGELAND  
IMPROVEMENTS:  
NONE  
PLANT COMMUNITIES:  
NATIVE GRASS

I, Rodney A. Walters, Professional Land Surveyor, CO. PLS # 16847 hereby certify that (in accordance with a request from Erin Bibeau with Marathon Oil Co, 5555 San Felipe, Houston, TX 77056) I and or personnel under my direction made a survey on the 12th day of May 2012, for the Surface Hole Location and Elevation of Marathon Oil Co. CROW VALLEY 7-62-28-4H being located the SE 1/4 of the SE 1/4, Section 28, T7N, R62W and the Bottom Hole Location being located in the NE1/4 of the NE1/4 of Section 28, T7N, R62W, both being of the 6th P.M., Weld County, State of Colorado.

- All bearings and distances are GRID, based on the Colorado State Plane Coordinate System, North Zone, North American Datum 1983 from GPS observations occupying a WHS control point (5/8" rebar) and having the Location and Elevation derived from an Opus Solution.
- Vertical Datum used is of NAVD 88.
- Record Bearings and Distances as shown are based on the General Land Office Survey plat approved on the 16th day of December 1872.
- Geographic coordinates for the bottom hole location were taken from the wellpath report prepared by Baker Hughes for Crow Valley 7-62-28-4H and dated 5/22/2012.



SURFACE HOLE LOCATION	
LAT.	40.538706°
LONG.	104.320665°
LAT.	40.538723°
LONG.	104.320159°
LAT.	40°32'19.34"
LONG.	104°19'14.40"
LAT.	40°32'19.40"
LONG.	104°19'12.57"
NORTH	1441271.01
EAST	3327775.20
NORTH	441271.42
EAST	2327924.65

BOTTOM HOLE LOCATION	
LAT.	40.551016°
LONG.	104.319952°
LAT.	40.551033°
LONG.	104.319446°
LAT.	40°33'03.65"
LONG.	104°19'11.83"
LAT.	40°33'03.72"
LONG.	104°19'10.00"
NORTH	1445757.76
EAST	3327913.73
NORTH	445758.08
EAST	2328063.14

MEASURE DATE	INSTRUMENT OPERATOR	PDOP	SHL GRND ELEV.
5/2/2012	LAUREN VANCE	1.4	4932.5

## CONFIDENTIALITY NOTES:

The information contained in this plat is legally privileged and confidential information intended only for the use of the recipients. If you are not the intended recipients, you are hereby notified that any use, dissemination, distribution or copying of this information is strictly prohibited.

**WILLIAM H. SMITH & ASSOCIATES P.C.**  
SURVEYING CONSULTANTS  
250 EAST SECOND NORTH GREEN RIVER, WY  
PHONE: 307-875-3638  
307-875-3639  
www.wsmithpcc.com

DRAWN BY: LAL	CHECKED BY: RAW
PROJECT NO: 762284H	JOB NO: 2011001
REVISION:	

## LEGEND

- FOUND CORNER
- ⊗ CALCULATED CORNER
- NOTHING FOUND

**LOCATION:**  
CROW VALLEY 7-62-28-4H  
WITHIN THE SE 1/4 SE 1/4  
SECTION 28,  
T 7 N, R 62 W,  
6TH PM.  
WELD COUNTY,  
COLORADO

**MARATHON OIL COMPANY**  
PO BOX 3128, HOUSTON TX, 77253  
5555 SAN FELIPE, HOUSTON TX, 77056

## AS-DRILLED WELL LOCATION PLAT

SCALE: 1"=1000'	EXHIBIT "A"
DATE: 6/12/2012	SHEET 1 OF 1