

Well Location Plat

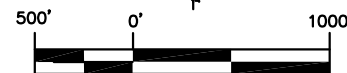
Gentry E7

Sec. 17, T.6S., R.92W.

Northwest Corner Sec. 17
Garfield County Brass Cap
S 88°47'02" E

North 1/4 Corner Sec.17
Brass Cap L.S. No.15846

Northeast Corner Sec. 17
Garfield County Brass Cap



Graphic Scale in Feet
1"= 1000'

Legend

- ◈ - Field Surveyed Section Corner
- ◈ - Field Surveyed Quarter Corner
- ⊙ - Calculated Section Corner Location
- ◻ - Field Surveyed 1/6 Corner

Bottom Hole:

Gentry E7

844' FSL
1948' FWL

NAD83

Lat: 39.521812626°N
Long: 107.692980221°W

NAD27

Lat: 39.521832101°N
Long: 107.692364100°W

Surface: Gentry E7

762' FSL
1686' FWL
Gnd El= 5665.0
Pad El= 5665.0

NAD83

Lat: 39.521590307°N
Long: 107.693907416°W

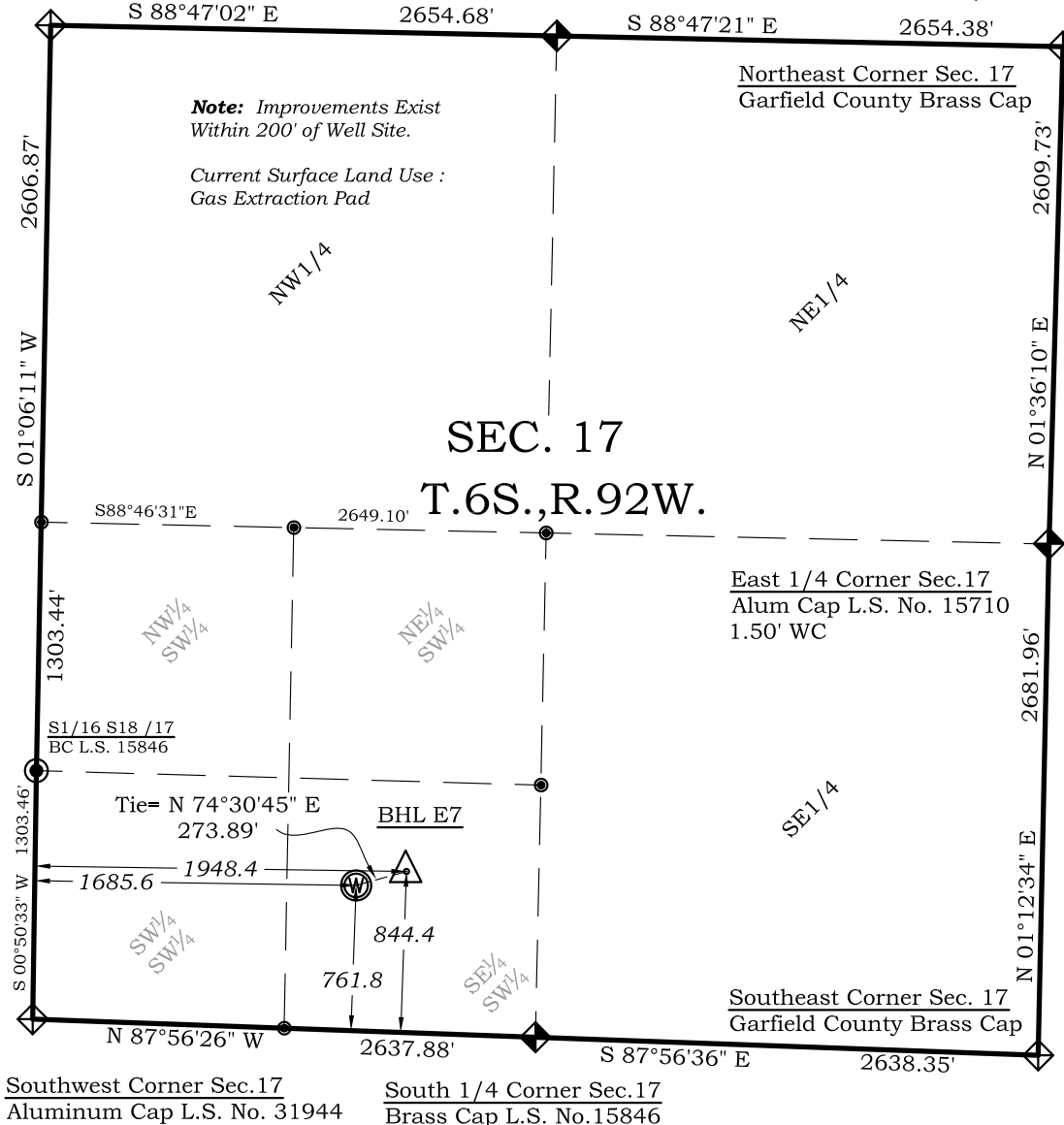
NAD27

Lat: 39.521609782°N
Long: 107.693291264°W

UTM 13 NORTH

NAD 1983

NORTHING
14363902.660
EASTING
880693.049

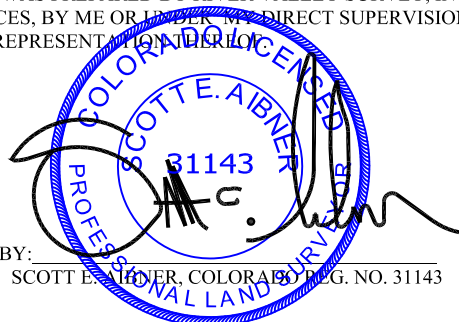


Prepared For Antero Resources:

Proposed Gentry E7 Well Situate in The SE 1/4 SW 1/4 Section
17, Township 6 South, Range 92 West of the 6 th. Principal
Meridian, County of Garfield, State of Colorado

SURVEYOR'S CERTIFICATE

I, SCOTT E. AIBNER, A REGISTERED LAND SURVEYOR, LICENSED UNDER THE LAWS OF THE STATE OF COLORADO DO HEREBY CERTIFY THAT THE SURVEY SHOWN HEREON WAS PREPARED BY RIVER VALLEY SURVEY, INC., FOR ANTERO RESOURCES, BY ME OR UNDER MY DIRECT SUPERVISION AND THAT THIS PLAT IS A TRUE REPRESENTATION OF THE SURVEY.



BY: SCOTT E. AIBNER, COLORADO REG. NO. 31143

Notes:

- 1.) LATITUDE AND LONGITUDE COORDINATES ARE DIFFERENTIALLY CORRECTED AND BASED ON PUBLISHED NGS CONTROL STATION "WDP-5".
- 2.) ELEVATIONS ARE BASED ON NAVD OF 1929.
- 3.) ALL BOTTOM AND TOP HOLE LOCATIONS ARE MEASURED 90 DEGREES FROM SECTION LINE.
- 4.) USGS QUADRANGLE MAP "SILT CO".
- 5.) CURRENT SURFACE LAND USE: GAS PAD
- 6.) PDOP AT THE TIME OF LOCATION OF SURFACE WELL = 1.8



River Valley Survey, Inc.
110 East 3rd. Street, Suite 213
Rifle, Colorado 81650
Ph: 970-379-7846

Project: Gentry E Pad

Proj. No. 06001-13

Field Date: 01-19-07

Scale: 1"= 1000'

Date: 05-18-12

Sheet: 1 of 7

Well Location Plat
Prepared For Antero Resources

Situate In:
SE 1/4 SW 1/4 Section 17, T.6S., R. 92 W.
of the 6th P.M., Garfield County,
Colorado

