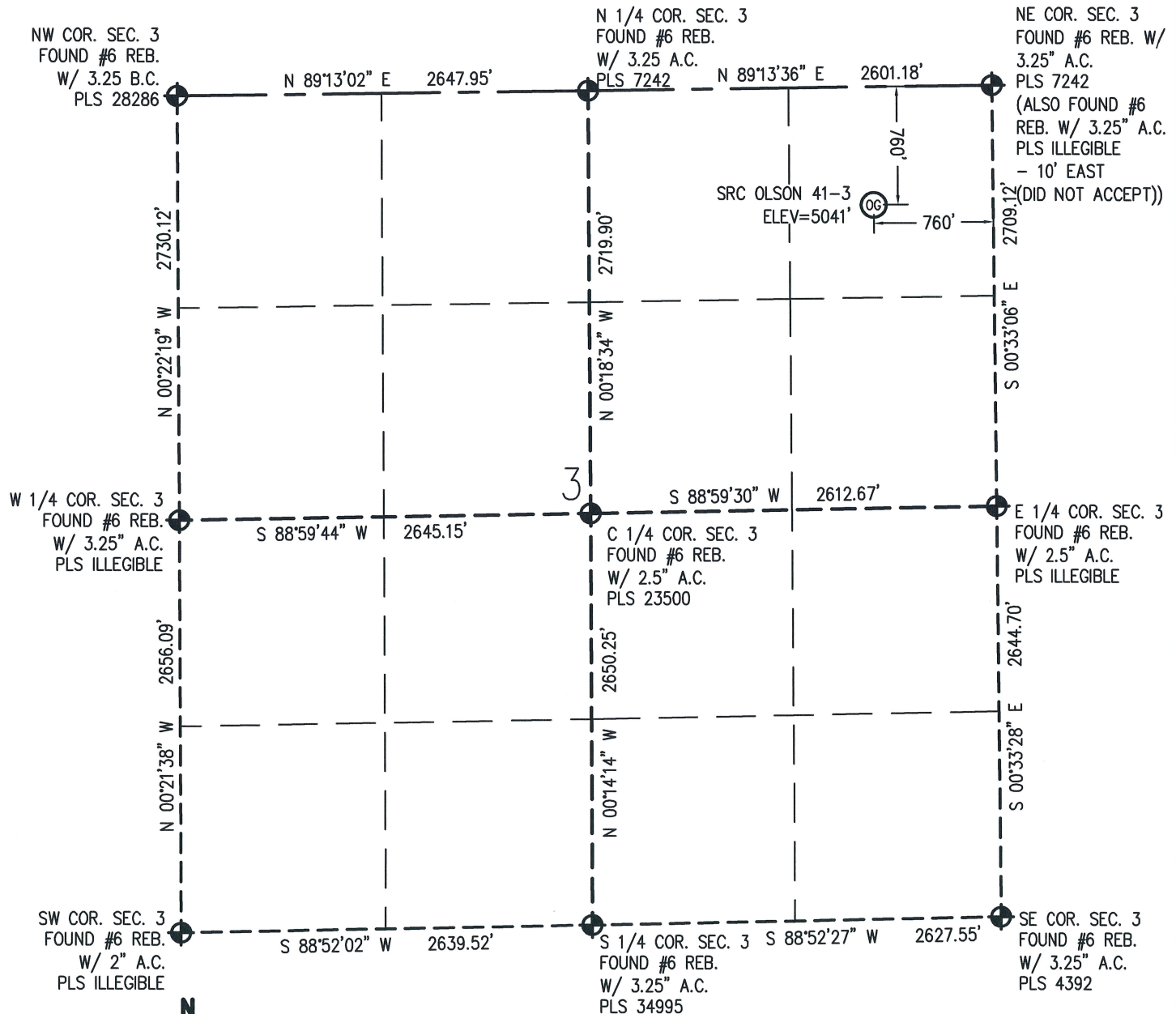


**WELL LOCATION CERTIFICATE****THIS MAP DOES NOT REPRESENT A BOUNDARY SURVEY**

IN ACCORDANCE WITH A REQUEST FROM CRAIG RASMUSON - SYNERGY RESOURCES, BASELINE ENGINEERING CORP. HAS DETERMINED THE LOCATION OF THE SRC OLSON 41-3 TO BE 760' FNL AND 760' FEL, AS MEASURED AT NINETY (90) DEGREES FROM THE SECTION LINE OF SECTION 3, TOWNSHIP 3 NORTH, RANGE 68 WEST, 6TH PRINCIPAL MERIDIAN, WELD COUNTY, COLORADO.

I HEREBY CERTIFY THAT THIS WELL LOCATION CERTIFICATE WAS PREPARED BY ME, OR UNDER MY DIRECT SUPERVISION, THAT THE FIELD WORK WAS COMPLETED ON 06/26/2012, THAT IT IS NOT A LAND SURVEY PLAT OR AN IMPROVEMENT SURVEY PLAT, AND THAT IT IS NOT TO BE RELIED UPON FOR ESTABLISHMENT OF FENCE, BUILDING, OR OTHER FUTURE IMPROVEMENT LINES.

**NOTES:**

- 1) LAT/LONG SHOWN ARE BASED ON A GPS OBSERVATION (NAD83).
- 2) BEARINGS SHOWN ARE GRID BEARINGS OF THE COLORADO STATE PLANE COORDINATE SYSTEM, NORTH ZONE, NORTH AMERICAN DATUM 1983/2007.
- 3) GROUND ELEVATIONS ARE BASED ON A GPS OBSERVATION (NAVD 88 DATUM).
- 4) ALL DISTANCES SHOWN ARE FIELD MEASURED UNLESS OTHERWISE NOTED.
- 5) THE NEAREST EXISTING WELL IS: NONE IN QUARTER SECTION.
- 6) IMPROVEMENTS: SEE LOCATION DRAWING EXHIBIT FOR ALL VISIBLE IMPROVEMENTS WITHIN 600' OF WELL HEAD.
- 7) SURFACE USE: NATURAL GRASS.

**SURFACE HOLE:**

LATITUDE: 40.260549° N  
LONGITUDE: 104.982593° W  
PDOP: 1.3  
1/4, 1/4: NE1/4NE1/4  
NEAREST PROPERTY LINE: 282' W

**LEGEND**

- - FOUND/SET SURVEY MONUMENT PER MONUMENT RECORD EXCEPTIONS NOTED.
- - CALCULATED SURVEY MONUMENT POSITION
- (C) - CALCULATED DIMENSION

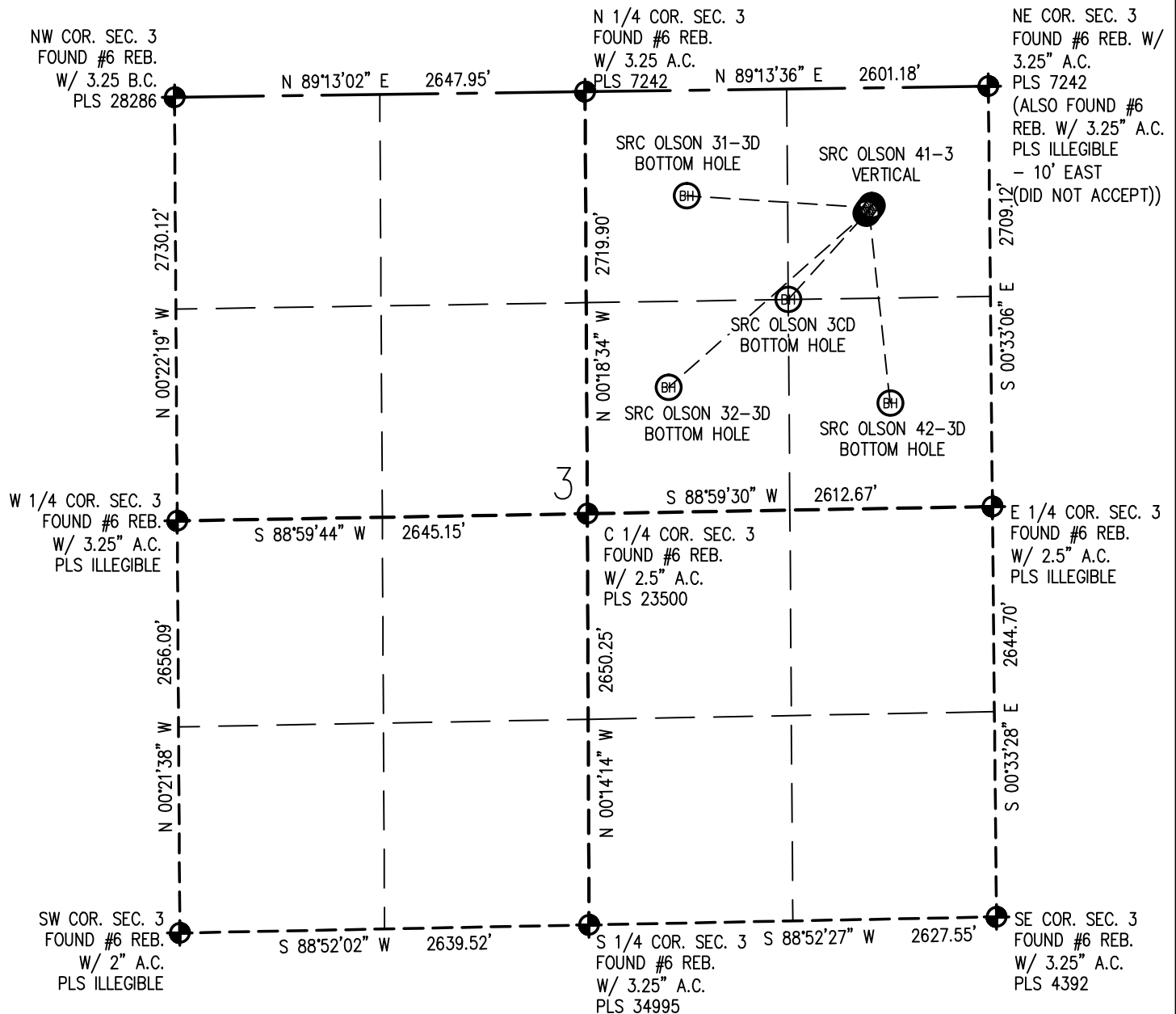
NOTICE: According to Colorado law you MUST commence any legal action based upon any defect in this W.L.C. within three years after you first discover such defect. In no event may any action based upon any defect in this W.L.C. be commenced more than ten years from this said date of the certification show hereon.


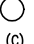


AARON A. DEMO  
Professional Land Surveyor Registration No. 38285  
State of Colorado  
FOR AND ON BEHALF OF BASELINE ENGINEERING CORP.

Completed  
6/27/2012

JOB: SYN04N68W34-03

**MULTI WELL PAD PLAN****THIS MAP DOES NOT REPRESENT A BOUNDARY SURVEY****LEGEND**

-  - FOUND/SET SURVEY MONUMENT PER MONUMENT RECORD EXCEPTIONS NOTED.
-  - CALCULATED SURVEY MONUMENT POSITION
- (C) - CALCULATED DIMENSION

0 1000  
Scale 1" = 1000 ft



NOTICE: According to Colorado law you MUST commence any legal action based upon any defect in this W.L.C. within three years after you first discover such defect. In no event may any action based upon any defect in this W.L.C. be commenced more than ten years from this said date of the certification show hereon.

# LOCATION DRAWING

SRC OLSON 41-3

SECTION 3  
TOWNSHIP 3 NORTH  
RANGE 68 WEST



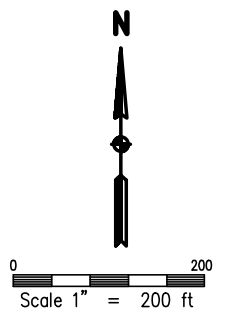
NEAREST: BUILDING 658' S, PUBLIC ROAD 746' N, ABOVE GROUND UTILITY 725' N,  
RAILROAD 5,280'+, PROPERTY LINE 282' W

## IMPROVEMENTS:

- (A) GRAVEL DRIVE: 105' NORTHWEST
- (B) CONCRETE BRIDGE: 257' NORTH
- (C) FENCE: 156' WEST
- (D) FENCE: 477' SOUTH
- (E) CMP: 350' SOUTHWEST
- (F) CONCRETE IRRIGATION DITCH: 124' NORTHWEST
- (G) NATURAL DRAINAGE DITCH: 418' SOUTHWEST
- (H) ASPHALT ROAD: 576' EAST

## NOTE

The size, type and location of underground utilities shown hereon are approximate, and are based on markings made by utility locate companies. It is not guaranteed that all utilities have been located. It shall be the responsibility of the contractor to verify the existence of all underground utilities in the area of the work before commencing new construction.

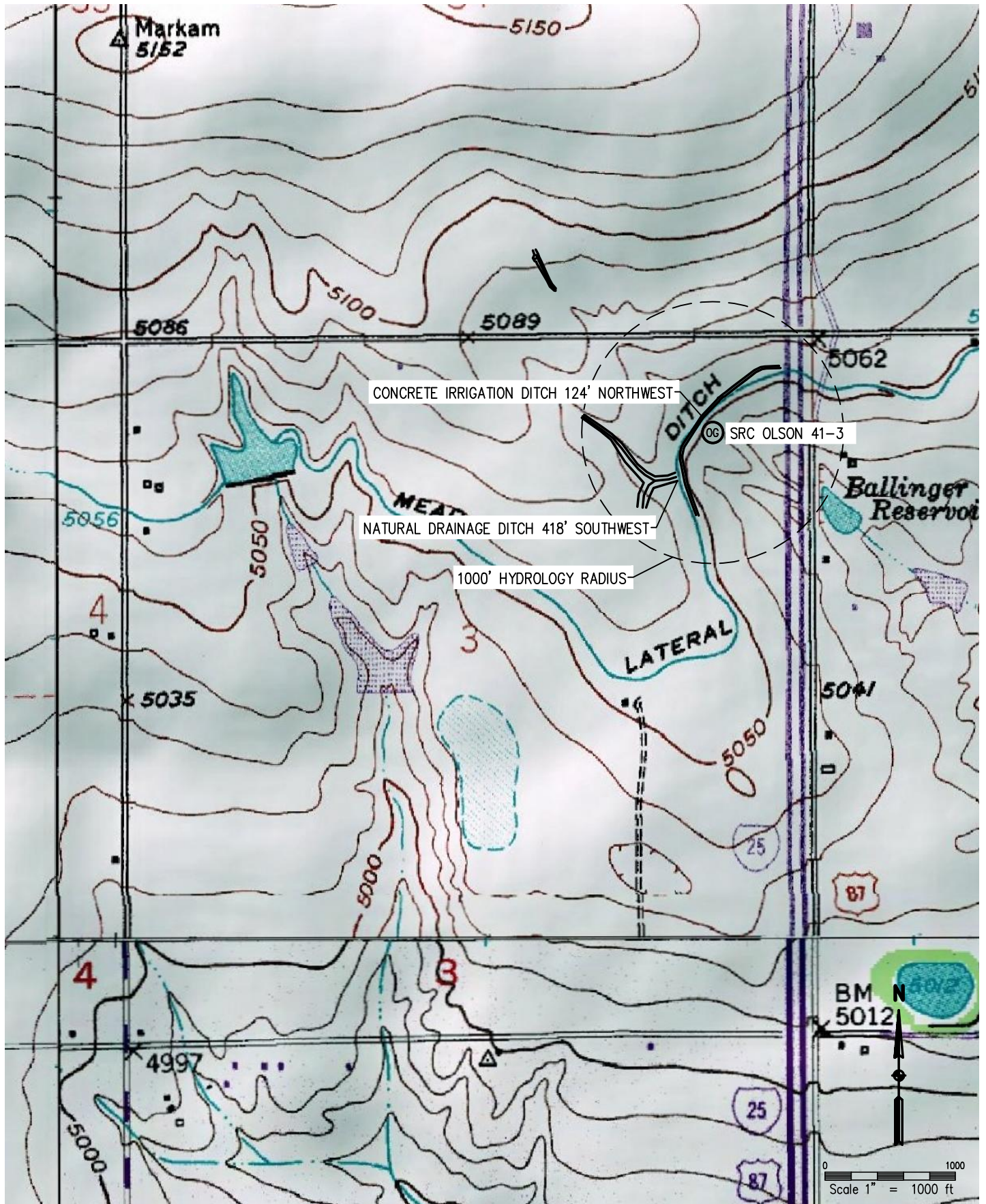




# HYDROLOGY MAP

SRC OLSON 41-3

SECTION 3  
TOWNSHIP 3 NORTH  
RANGE 68 WEST

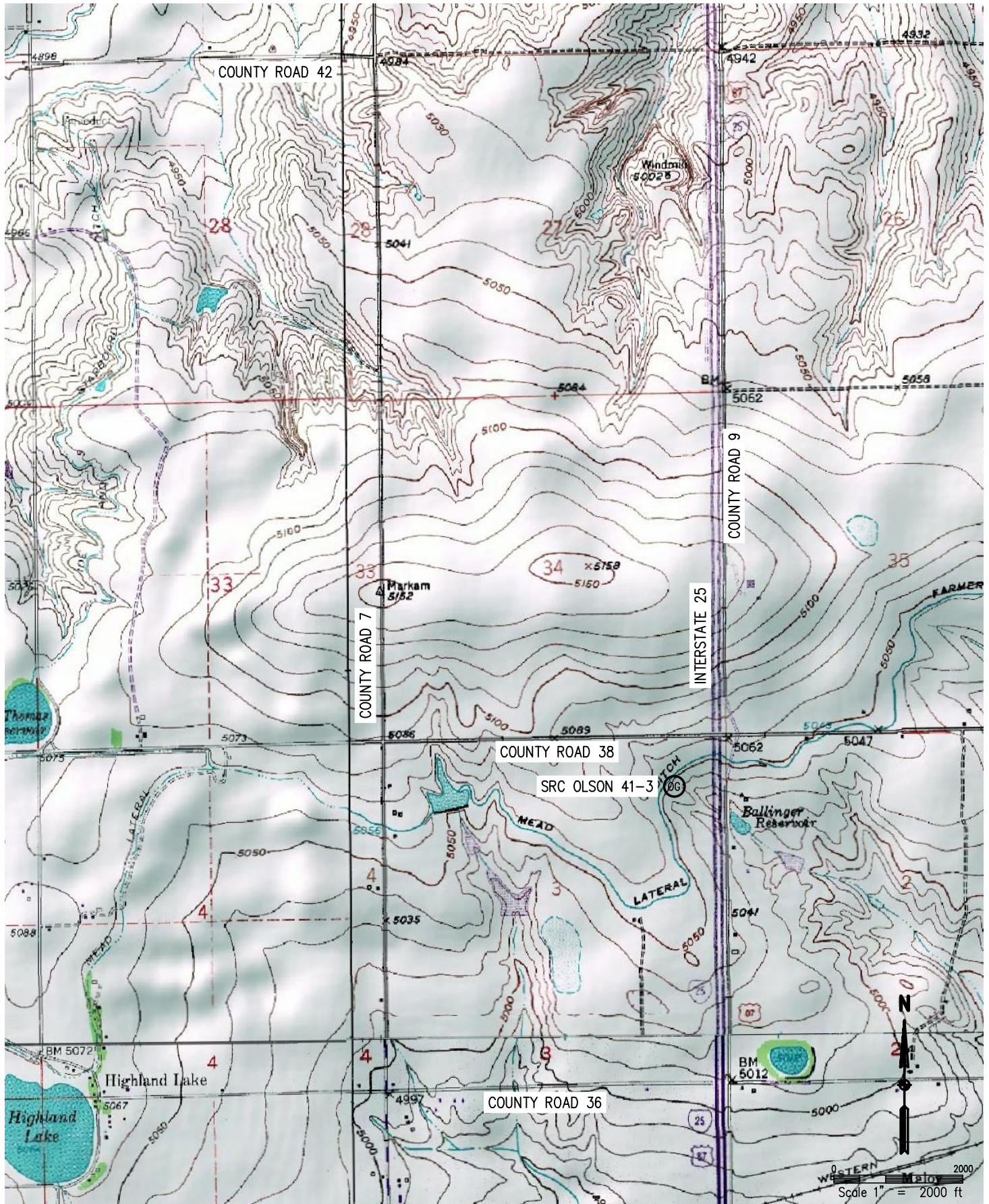




# ACCESS ROAD MAP

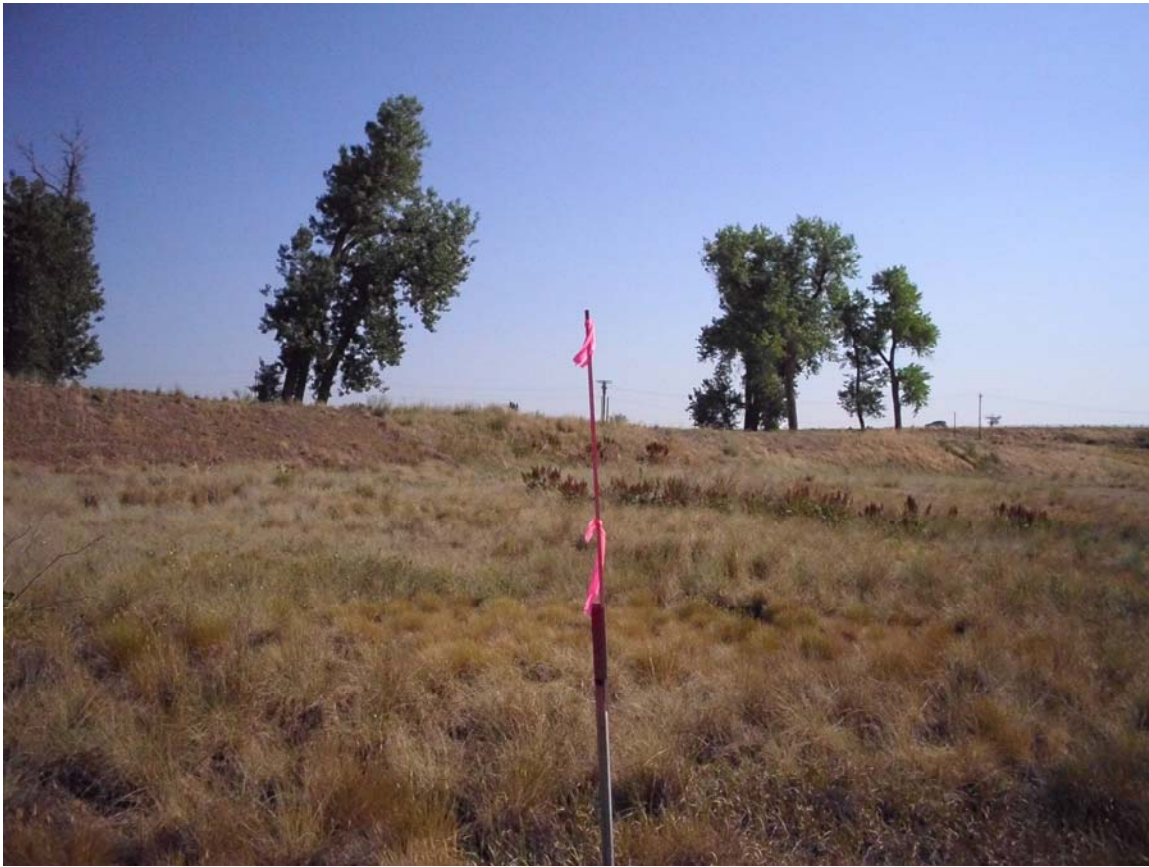
SRC OLSON 41-3

SECTION 3  
TOWNSHIP 3 NORTH  
RANGE 68 WEST





## WELL HEAD PHOTO EXHIBIT



**Figure 1: OLSON 41-3 LOOKING NORTH TOWARD TANK BATTERY AND ACCESS ROAD  
(NE1/4 NE1/4 SEC 3, T3N, R68W, 6-26-12)**

## WELL HEAD PHOTO EXHIBIT



**Figure 2: OLSON 41-3 LOOKING EAST (NE1/4 NE1/4 SEC 3, T3N, R68W, 6-26-12)**

## WELL HEAD PHOTO EXHIBIT



**Figure 3: OLSON 41-3 LOOKING SOUTH (NE1/4 NE1/4 SEC 3, T3N, R68W, 6-26-12)**



## WELL HEAD PHOTO EXHIBIT



**Figure 4: OLSON 41-3 LOOKING WEST (NE1/4 NE1/4 SEC 3, T3N, R68W, 6-26-12)**