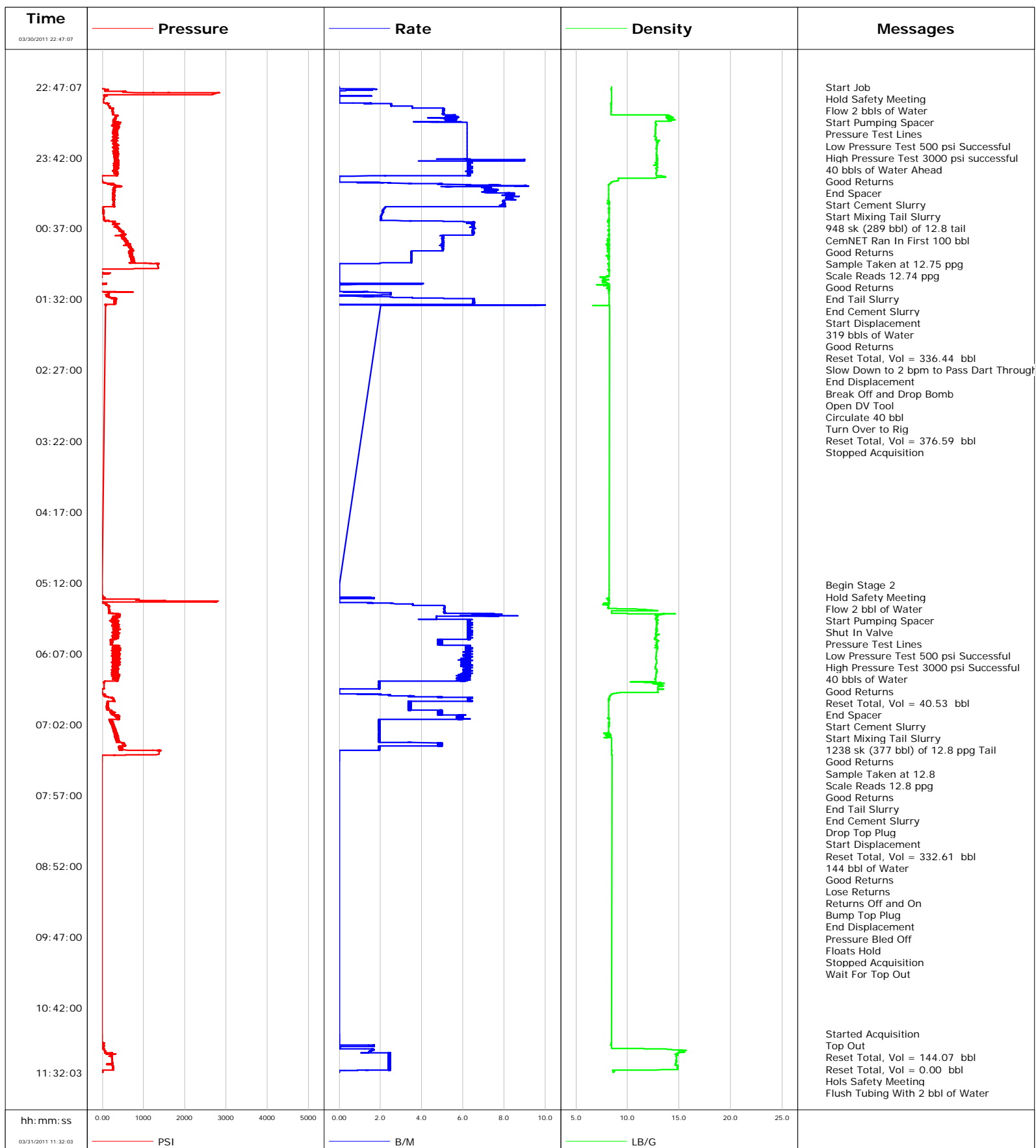


Well RGU 31-25-198
Field Ryan Gulch
Engineer Jeff Eulberg
Country United States

Client Williams
SIR No. 515004
Job Type 9 5/8" 2 Stage Surface
Job Date 03-30-2011



Cementing Service Report

				Customer Williams			Job Number 515004			
Well RGU 31-25-198 RGU-31-25-198			Location (legal)			Schlumberger Location Grand Junction			Job Start Mar/30/2011	
Field Ryan Gulch		Formation Name/Type Dirty-Sandstone		Deviation deg		Bit Size 13.5 in		Well MD 4176.0 ft		Well TVD ft
County Rio Blanco		State/Province Colorado		BHP psi		BHST 115 degF		BHCT 88 degF		Pore Press. Gradient lb/gal
Well Master 0631264792		API/UWI								
Rig Name Cyclone 29		Drilled For Gas		Service Via Land		Casing/Liner				
						Depth, ft		Size, in		Weight, lb/ft
Offshore Zone		Well Class New		Well Type Development		80.0		18.6		87.5
						4176.0		9.6		36.0
Drilling Fluid Type		Max. Density lb/gal		Plastic Viscosity cP		Tubing/Drill Pipe				
						T/D		Depth, ft		Size, in
Service Line Cementing		Job Type 9 5/8" 2 Stage Surface								
Max. Allowed Tub. Press 3000 psi		Max. Allowed Ann. Press psi		WH Connection 9 5/8" Cap and Bowl		Perforations/Open Hole				
						Top, ft		Bottom, ft		shot/ft
						ft		ft		
						ft		ft		
						Treat Down Casing		Displacement 317.0 bbl		Packer Type
						Tubing Vol. bbl		Casing Vol. bbl		Annular Vol. bbl
										Openhole Vol. bbl
Casing/Tubing Secured <input type="checkbox"/>		1 Hole Vol. Circulated prior to Cement <input type="checkbox"/>				Casing Tools		Squeeze Job		
Lift Pressure 2066 psi						Shoe Type Guide		Squeeze Type		
Pipe Rotated <input type="checkbox"/>		Pipe Reciprocated <input type="checkbox"/>				Shoe Depth 4176.0 ft		Tool Type		
No. Centralizers		Top Plugs 0		Bottom Plugs 0		Stage Tool Type DV Tool		Tool Depth ft		
Cement Head Type						Stage Tool Depth 1865.0 ft		Tail Pipe Size in		
Job Scheduled For Mar/30/2011		Arrived on Location Mar/30/2011		Leave Location Mar/30/2011		Collar Type Float		Tail Pipe Depth ft		
						Collar Depth 4132.0 ft		Sqz. Total Vol. bbl		
Date	Time 24-hr clock	Treating Pressure PSI	Flow Rate B/M	Density LB/G	Volume BBL	Message				
03/30/2011	22:47:07	-13	0.0	8.43	0.0	Started Acquisition				
03/30/2011	22:47:08	-13	0.0	8.43	0.0	Start Job				
03/30/2011	22:47:11	-14	0.0	8.43	0.0	Hold Safety Meeting				
03/30/2011	22:47:12	-14	0.0	8.43	0.0	Flow 2 bbls of Water				
03/30/2011	22:47:15	-13	0.0	8.43	0.0	Start Pumping Spacer				
03/30/2011	22:47:19	-14	0.0	8.43	0.0	Pressure Test Lines				
03/30/2011	22:47:21	-13	0.0	8.43	0.0	Low Pressure Test 500 psi Successful				
03/30/2011	22:48:47	-14	0.0	8.43	0.0					
03/30/2011	22:50:27	61	0.0	8.43	1.9					
03/30/2011	22:52:07	2779	0.0	8.43	1.9					
03/30/2011	22:53:47	36	0.0	8.44	1.9					
03/30/2011	22:55:27	47	0.0	8.43	2.5					
03/30/2011	22:57:07	34	0.0	8.43	2.5					
03/30/2011	22:58:47	30	0.0	8.43	2.5					
03/30/2011	23:00:27	134	2.5	8.38	3.6					
03/30/2011	23:02:07	146	2.5	8.42	7.8					
03/30/2011	23:03:47	242	5.0	8.44	13.7					
03/30/2011	23:05:27	253	5.1	8.42	22.1					
03/30/2011	23:07:07	254	5.0	8.42	30.5					
03/30/2011	23:07:35	251	5.1	8.42	32.9	40 bbls of Water Ahead				
03/30/2011	23:07:36	262	5.1	8.42	33.0	Good Returns				

Well RGU 31-25-198 RGU-31-25-198			Field Ryan Gulch		Job Start Mar/30/2011	Customer Williams	Job Number 515004
Date	Time 24-hr clock	Treating Pressure PSI	Flow Rate B/M	Density LB/G	Volume BBL	Message	
03/30/2011	23:08:57	257	5.0	8.41	39.8	End Spacer	
03/30/2011	23:09:02	256	5.1	8.41	40.2	Start Cement Slurry	
03/30/2011	23:09:45	332	5.4	14.03	44.1	Start Mixing Tail Slurry	
03/30/2011	23:09:46	352	5.4	14.03	44.2	948 sk (289 bbl) of 12.8 tail	
03/30/2011	23:09:47	352	5.2	14.02	44.2	CemNET Ran In First 100 bbl	
03/30/2011	23:10:27	322	5.4	14.09	47.8		
03/30/2011	23:12:07	287	5.2	14.04	56.7		
03/30/2011	23:13:47	292	5.5	14.07	65.7		
03/30/2011	23:15:27	380	6.2	12.70	75.3		
03/30/2011	23:17:07	285	6.2	12.77	85.7		
03/30/2011	23:18:47	333	6.2	12.71	96.0		
03/30/2011	23:20:27	326	6.2	12.72	106.3		
03/30/2011	23:22:07	342	6.2	12.69	116.7		
03/30/2011	23:23:47	375	6.2	12.71	127.0		
03/30/2011	23:25:27	330	6.2	12.65	137.4		
03/30/2011	23:27:07	297	6.2	12.78	147.7		
03/30/2011	23:27:46	302	6.2	12.72	151.8	Scale Reads 12.74 ppg	
03/30/2011	23:28:47	319	6.2	12.99	158.1		
03/30/2011	23:30:27	316	6.2	12.79	168.4		
03/30/2011	23:32:07	330	6.2	12.83	178.8		
03/30/2011	23:33:47	322	6.2	12.83	189.1		
03/30/2011	23:35:27	328	6.2	12.81	199.5	Good Returns	
03/30/2011	23:37:07	319	6.2	12.83	209.8		
03/30/2011	23:38:47	323	6.2	12.79	220.2		
03/30/2011	23:40:27	364	6.2	12.87	230.5		
03/30/2011	23:42:07	292	6.2	12.85	240.9		
03/30/2011	23:43:47	383	9.0	12.88	251.7		
03/30/2011	23:45:27	325	6.2	12.90	265.2		
03/30/2011	23:47:07	346	6.4	12.93	275.7		
03/30/2011	23:48:47	348	6.2	12.89	286.3		
03/30/2011	23:50:27	301	6.4	12.74	296.8		
03/30/2011	23:52:07	292	6.2	12.86	307.3		
03/30/2011	23:53:47	333	6.4	12.81	317.8		
03/30/2011	23:55:27	360	6.2	12.78	328.3		
03/30/2011	23:57:07	-17	0.0	13.66	334.4		
03/30/2011	23:58:47	-11	0.0	9.11	334.4		
03/31/2011	00:00:27	5	0.0	8.84	334.4		
03/31/2011	00:01:01	2	0.0	8.51	334.4	End Tail Slurry	
03/31/2011	00:01:02	2	0.0	8.50	334.4	End Cement Slurry	
03/31/2011	00:01:29	48	2.0	8.40	334.6	Start Displacement	
03/31/2011	00:01:32	58	2.0	8.40	334.7	319 bbls of Water	
03/31/2011	00:02:07	63	2.5	8.36	335.9		
03/31/2011	00:02:17	285	3.4	8.32	336.4	Reset Total, Vol = 336.44 bbl	
03/31/2011	00:03:47	328	7.3	8.18	345.3		
03/31/2011	00:05:27	280	7.3	8.16	357.4		
03/31/2011	00:07:07	302	7.5	8.15	369.5		
03/31/2011	00:08:47	266	7.3	8.15	381.8		
03/31/2011	00:10:27	287	8.3	8.15	394.9		
03/31/2011	00:12:07	294	8.1	8.15	408.6		
03/31/2011	00:13:47	297	8.2	8.15	422.4		
03/31/2011	00:15:27	289	8.0	8.12	436.1		
03/31/2011	00:17:07	284	8.0	8.21	449.4		
03/31/2011	00:18:47	282	8.0	8.22	462.7		
03/31/2011	00:20:27	27	2.3	8.20	475.4		

Well RGU 31-25-198 RGU-31-25-198			Field Ryan Gulch		Job Start Mar/30/2011	Customer Williams	Job Number 515004
Date	Time 24-hr clock	Treating Pressure PSI	Flow Rate B/M	Density LB/G	Volume BBL	Message	
03/31/2011	00:23:47	23	2.1	8.20	482.6		
03/31/2011	00:25:27	25	2.1	8.20	486.1		
03/31/2011	00:27:07	29	2.0	8.21	489.6		
03/31/2011	00:28:47	31	2.0	8.22	493.0		
03/31/2011	00:30:00	35	2.0	8.22	495.4	Slow Down to 2 bpm to Pass Dart Through DV Tool	
03/31/2011	00:30:27	47	2.0	8.17	496.3		
03/31/2011	00:32:07	251	6.5	8.20	502.4		
03/31/2011	00:33:47	293	6.5	8.20	513.2		
03/31/2011	00:35:27	338	6.5	8.21	524.0		
03/31/2011	00:37:07	400	6.5	8.21	534.9		
03/31/2011	00:38:47	446	6.5	8.22	545.7		
03/31/2011	00:40:27	498	6.5	8.21	556.5		
03/31/2011	00:42:07	543	6.5	8.21	567.3		
03/31/2011	00:43:47	482	5.0	8.21	576.0		
03/31/2011	00:45:27	541	5.0	8.19	584.4		
03/31/2011	00:47:07	562	5.0	8.17	592.8		
03/31/2011	00:48:47	587	5.0	8.16	601.1		
03/31/2011	00:50:27	641	5.0	8.20	609.5		
03/31/2011	00:52:07	663	5.0	8.20	617.9		
03/31/2011	00:53:47	690	5.0	8.19	626.2		
03/31/2011	00:55:27	679	3.5	8.16	633.5		
03/31/2011	00:57:07	666	3.5	8.20	639.3		
03/31/2011	00:58:47	662	3.5	8.18	645.2		
03/31/2011	01:00:27	717	3.5	8.20	651.0		
03/31/2011	01:02:07	723	3.5	8.19	656.8		
03/31/2011	01:03:47	784	3.5	8.20	662.6		
03/31/2011	01:05:27	1344	0.0	8.20	664.2		
03/31/2011	01:07:07	1347	0.0	8.20	664.2		
03/31/2011	01:08:47	6	0.0	8.20	664.2		
03/31/2011	01:09:49	-17	0.0	8.19	664.2	End Displacement	
03/31/2011	01:09:50	-17	0.0	8.19	664.2	Break Off and Drop Bomb	
03/31/2011	01:09:51	-17	0.0	8.19	664.2	Open DV Tool	
03/31/2011	01:09:54	-16	0.0	8.19	664.2	Circulate 40 bbl	
03/31/2011	01:09:55	-17	0.0	8.19	664.2	Turn Over to Rig	
03/31/2011	01:10:27	-16	0.0	8.19	664.2		
03/31/2011	01:12:07	14	0.0	8.20	664.2		
03/31/2011	01:13:47	-16	0.0	8.20	664.2		
03/31/2011	01:15:27	-16	0.0	7.80	664.2		
03/31/2011	01:17:07	-16	0.0	8.16	664.2		
03/31/2011	01:18:47	-15	0.0	7.73	664.2		
03/31/2011	01:20:27	95	4.0	8.19	667.3		
03/31/2011	01:22:07	-16	0.0	8.23	668.2		
03/31/2011	01:23:47	-16	0.0	8.21	668.2		
03/31/2011	01:25:27	-15	0.0	8.20	668.2		
03/31/2011	01:27:07	165	2.5	8.20	669.4		
03/31/2011	01:28:47	96	0.7	8.21	673.5		
03/31/2011	01:30:27	144	2.5	8.20	674.7		
03/31/2011	01:32:07	317	6.5	8.20	682.8		
03/31/2011	01:33:47	300	6.5	8.21	693.6		
03/31/2011	01:35:27	297	6.5	8.20	704.5		
03/31/2011	01:37:05	76	2.0	8.24	713.0	Reset Total, Vol = 376.59 bbl	
03/31/2011	05:13:47	-1	0.0	8.20	0.0		
03/31/2011	05:13:49	-1	0.0	8.19	0.0	Begin Stage 2	
03/31/2011	05:14:04	-2	0.0	8.19	0.0	Hold Safety Meeting	

Well RGU 31-25-198 RGU-31-25-198			Field Ryan Gulch		Job Start Mar/30/2011		Customer Williams		Job Number 515004	
Date	Time 24-hr clock	Treating Pressure PSI		Flow Rate B/M	Density LB/G		Volume BBL		Message	
03/31/2011	05:14:07	-2		0.0	8.19		0.0		Start Pumping Spacer	
03/31/2011	05:14:09	-2		0.0	8.19		0.0		Shut In Valve	
03/31/2011	05:14:12	-2		0.0	8.19		0.0		Pressure Test Lines	
03/31/2011	05:14:13	-2		0.0	8.19		0.0		Low Pressure Test 500 psi Successful	
03/31/2011	05:14:14	-2		0.0	8.19		0.0		High Pressure Test 3000 psi Successful	
03/31/2011	05:15:27	-3		0.0	8.20		0.0			
03/31/2011	05:17:07	-4		0.0	8.19		0.0			
03/31/2011	05:18:47	-4		0.0	8.20		0.0			
03/31/2011	05:20:27	-4		0.0	8.19		0.0			
03/31/2011	05:22:07	-5		0.0	8.22		0.0			
03/31/2011	05:23:47	42		1.6	8.22		0.7			
03/31/2011	05:25:27	819		0.0	8.19		2.0			
03/31/2011	05:27:07	2721		0.0	8.20		2.0			
03/31/2011	05:28:47	90		3.6	8.14		5.2			
03/31/2011	05:30:27	154		5.1	8.15		12.1			
03/31/2011	05:32:07	157		5.1	8.15		20.6			
03/31/2011	05:33:47	156		5.1	12.87		29.1			
03/31/2011	05:35:27	164		5.1	8.44		37.6			
03/31/2011	05:35:59	256		6.6	8.45		40.5		Reset Total, Vol = 40.53 bbl	
03/31/2011	05:36:01	261		6.6	8.45		40.8		End Spacer	
03/31/2011	05:36:02	261		6.8	8.45		40.9		Start Cement Slurry	
03/31/2011	05:37:01	355		7.6	13.18		48.1		Start Mixing Tail Slurry	
03/31/2011	05:37:05	359		7.2	13.11		48.6		1238 sk (377 bbl) of 12.8 ppg Tail	
03/31/2011	05:37:07	327		7.0	13.09		48.8			
03/31/2011	05:38:19	327		4.7	12.82		56.9		Sample Taken at 12.8	
03/31/2011	05:38:20	333		4.7	12.82		56.9		Scale Reads 12.8 ppg	
03/31/2011	05:38:47	366		4.7	12.85		59.1			
03/31/2011	05:40:27	290		4.7	12.70		66.9			
03/31/2011	05:42:07	326		6.4	12.80		77.4			
03/31/2011	05:43:47	255		6.2	12.86		87.9			
03/31/2011	05:45:27	302		6.4	12.79		98.4			
03/31/2011	05:47:07	327		6.4	12.79		108.9			
03/31/2011	05:48:47	290		6.4	12.78		119.4			
03/31/2011	05:50:27	334		6.4	12.75		129.9			
03/31/2011	05:52:07	291		6.4	12.70		140.5			
03/31/2011	05:53:47	332		6.4	12.76		151.0			
03/31/2011	05:55:27	305		6.4	12.59		161.5			
03/31/2011	05:56:28	199		4.8	12.74		167.5		Good Returns	
03/31/2011	05:57:07	197		4.9	12.97		170.7			
03/31/2011	05:58:47	210		5.0	12.80		178.8			
03/31/2011	06:00:27	209		4.9	12.76		187.0			
03/31/2011	06:02:07	309		6.2	12.75		197.5			
03/31/2011	06:03:47	264		6.4	12.87		208.0			
03/31/2011	06:05:27	312		6.2	12.83		218.4			
03/31/2011	06:07:07	276		6.4	12.79		228.9			
03/31/2011	06:08:47	353		6.4	12.79		239.3			
03/31/2011	06:10:27	372		6.0	12.73		249.8			
03/31/2011	06:12:07	260		6.2	12.80		260.1			
03/31/2011	06:13:47	381		6.2	12.82		270.5			
03/31/2011	06:15:27	289		6.1	12.77		280.8			
03/31/2011	06:17:07	363		6.2	12.72		291.2			
03/31/2011	06:18:47	378		6.4	12.73		301.6			
03/31/2011	06:20:27	284		6.4	12.84		312.0			
03/31/2011	06:22:07	306		6.2	12.81		322.5			

Well RGU 31-25-198 RGU-31-25-198			Field Ryan Gulch		Job Start Mar/30/2011	Customer Williams		Job Number 515004
Date	Time 24-hr clock	Treating Pressure PSI	Flow Rate B/M	Density LB/G	Volume BBL	Message		
03/31/2011	06:25:27	322	5.9	12.76	343.0			
03/31/2011	06:27:07	345	6.0	12.75	353.0			
03/31/2011	06:28:47	54	1.9	12.74	361.8			
03/31/2011	06:30:27	41	2.0	12.57	365.1			
03/31/2011	06:32:07	38	1.9	13.30	368.3			
03/31/2011	06:33:47	37	1.9	12.93	371.6			
03/31/2011	06:35:27	-6	0.0	12.94	373.1			
03/31/2011	06:37:07	7	0.0	12.95	373.1			
03/31/2011	06:37:36	8	0.0	9.12	373.1	End Tail Slurry		
03/31/2011	06:37:38	8	0.0	9.07	373.1	End Cement Slurry		
03/31/2011	06:37:42	8	0.0	8.97	373.1	Drop Top Plug		
03/31/2011	06:37:43	8	0.0	8.97	373.1	Start Displacement		
03/31/2011	06:37:45	9	0.0	8.95	373.1	Reset Total, Vol = 332.61 bbl		
03/31/2011	06:38:10	8	0.0	8.65	373.1	Good Returns		
03/31/2011	06:38:47	51	1.9	8.42	373.6			
03/31/2011	06:40:27	63	3.4	8.29	378.2			
03/31/2011	06:42:07	264	6.4	8.19	387.7			
03/31/2011	06:43:47	274	6.2	8.19	398.2			
03/31/2011	06:45:27	116	3.4	8.18	404.9			
03/31/2011	06:47:07	122	3.5	8.18	410.6			
03/31/2011	06:48:47	102	3.5	8.17	416.3			
03/31/2011	06:50:27	154	3.5	8.17	422.0			
03/31/2011	06:52:07	205	4.8	8.17	429.3			
03/31/2011	06:53:47	233	4.8	8.17	437.5			
03/31/2011	06:55:27	343	5.8	8.17	446.4			
03/31/2011	06:57:07	379	5.8	8.17	456.1			
03/31/2011	06:58:47	215	1.9	8.21	463.6			
03/31/2011	07:00:04	222	1.9	8.21	466.1	Lose Returns		
03/31/2011	07:00:27	193	2.0	8.20	466.9			
03/31/2011	07:02:07	221	1.9	8.18	470.1			
03/31/2011	07:03:47	240	1.9	8.19	473.4			
03/31/2011	07:05:27	265	1.9	8.18	476.6			
03/31/2011	07:07:07	308	2.0	8.17	479.9			
03/31/2011	07:08:47	296	2.0	8.08	483.1			
03/31/2011	07:10:27	326	1.9	8.16	486.4			
03/31/2011	07:12:07	323	1.9	8.08	489.6			
03/31/2011	07:13:47	401	1.9	8.46	492.9			
03/31/2011	07:15:18	414	1.9	8.46	495.8	Returns Off and On		
03/31/2011	07:15:27	341	1.9	8.46	496.1			
03/31/2011	07:18:47	559	4.9	8.46	510.1			
03/31/2011	07:20:27	409	2.0	8.46	513.6			
03/31/2011	07:22:07	958	1.9	8.46	516.8			
03/31/2011	07:23:47	1375	0.0	8.47	517.2			
03/31/2011	07:25:07	1373	0.0	8.48	517.2	Bump Top Plug		
03/31/2011	07:25:27	1335	0.0	8.48	517.2			
03/31/2011	07:25:45	831	0.0	8.48	517.2	End Displacement		
03/31/2011	07:25:50	568	0.0	8.48	517.2	Pressure Bled Off		
03/31/2011	07:27:07	-8	0.0	8.48	517.2			
03/31/2011	07:28:45	-7	0.0	8.48	517.2	Floats Hold		
03/31/2011	07:28:47	-8	0.0	8.48	517.2			
03/31/2011	07:30:27	-9	0.0	8.48	517.2			
03/31/2011	11:02:23	-6	0.0	8.46	517.2	Top Out		
03/31/2011	11:02:25	-5	0.0	8.46	517.2	Reset Total, Vol = 144.07 bbl		
03/31/2011	11:02:26	-6	0.0	8.46	517.2	Reset Total, Vol = 0.00 bbl		

Well RGU 31-25-198 RGU-31-25-198			Field Ryan Gulch		Job Start Mar/30/2011		Customer Williams		Job Number 515004	
Date	Time 24-hr clock	Treating Pressure PSI		Flow Rate B/M	Density LB/G		Volume BBL	Message		
03/31/2011	11:05:27	-7		0.0	8.46		0.0			
03/31/2011	11:05:50	-7		0.0	8.46		0.0	Hols Safety Meeting		
03/31/2011	11:05:52	-7		0.0	8.46		0.0	Flush Tubing With 2 bbl of Water		
03/31/2011	11:07:07	-6		0.0	8.46		0.0			
03/31/2011	11:08:47	-2		0.0	8.45		0.0			
03/31/2011	11:10:27	36		0.0	8.44		0.0			
03/31/2011	11:12:07	-10		0.0	8.46		2.1			
03/31/2011	11:13:47	41		0.0	11.84		2.1			
03/31/2011	11:15:27	66		1.5	15.03		4.5			
03/31/2011	11:15:50	72		1.5	15.38		5.1	Start Cement Slurry		
03/31/2011	11:15:52	69		1.5	15.37		5.2	Start Mixing Tail Slurry		
03/31/2011	11:17:07	226		2.4	14.85		7.1			
03/31/2011	11:18:47	222		2.5	14.88		11.2			
03/31/2011	11:20:27	232		2.5	14.75		15.3			
03/31/2011	11:22:07	238		2.5	14.72		19.4			
03/31/2011	11:23:47	243		2.4	14.76		23.4			
03/31/2011	11:25:27	180		2.4	14.66		27.5			
03/31/2011	11:27:07	257		2.4	14.86		31.6			
03/31/2011	11:28:47	256		2.5	14.86		35.7			
03/31/2011	11:30:27	181		2.0	8.62		39.8			
03/31/2011	11:31:45	4		0.0	8.62		39.9	Pump 37 bbl of 14.5 Tail		
03/31/2011	11:31:48	4		0.0	8.62		39.9	End Tail Slurry		
03/31/2011	11:31:49	4		0.0	8.62		39.9	End Cement Slurry		

Post Job Summary

Average Pump Rates, bbl/min					Volume of Fluid Injected, bbl			
Slurry 4.8	N2	Mud	Maximum Rate 10.8	Total Slurry 700.0	Mud 0.0	Spacer 80.0	N2	
Treating Pressure Summary, psi					Breakdown Fluid			
Maximum 2839	Final 4	Average 332	Bump Plug to	Breakdown	Type	Volume bbl	Density lb/gal	
Avg. N2 Percent %		Designed Slurry Volume 0.0 bbl		Displacement 0.0 bbl	Mix Water Temp degF	Cement Circulated to Surface? <input type="checkbox"/>	Volume bbl	
						Washed Thru Perfs <input type="checkbox"/>	To ft	
Customer or Authorized Representative Joe Honeycutt			Schlumberger Supervisor Jeff Eulberg			Circulation Lost <input type="checkbox"/>	Job Completed <input type="checkbox"/>	
						-	-	



Service Order #:	
Date:	Mar/30/2011
Operating Time (hh:mm):	00:00
Client Rep:	Joe Honeycutt
Schlumberger Engineer:	Jeff Eulberg
Schlumberger FSM:	

To be completed by Company Rep. Please answer Y (Yes) or N (No) and add any comments below.

4	Evaluation				
4a	Main job objective achieved with no consequential non-productive time	10	yes <input checked="" type="checkbox"/>	no <input type="checkbox"/>	10
Sub-total					100%

Comments: (Please include a brief explanation for a "NO" response and summarize any innovations attempted on this well.)

Client:	Schlumberger:
Client Signature:	Schlumberger Signature: