



SITE DETAILS: Dutch Lake 25-01H Briggsdale

Site Latitude: 40° 31' 21.799 N
Site Longitude: 104° 16' 42.989 W

COMPANY DETAILS: BILL BARRETT CORP

Calculation Method: Minimum Curvature
Error System: ISCWSA
Scan Method: Closest Approach 3D
Error Surface: Elliptical Conic
Warning Method: Error Ratio

Positional Uncertainty: 0.0
Convergence: 0.79
Local North: True

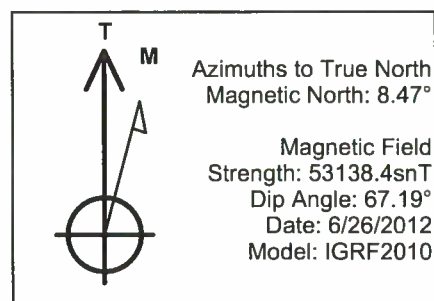
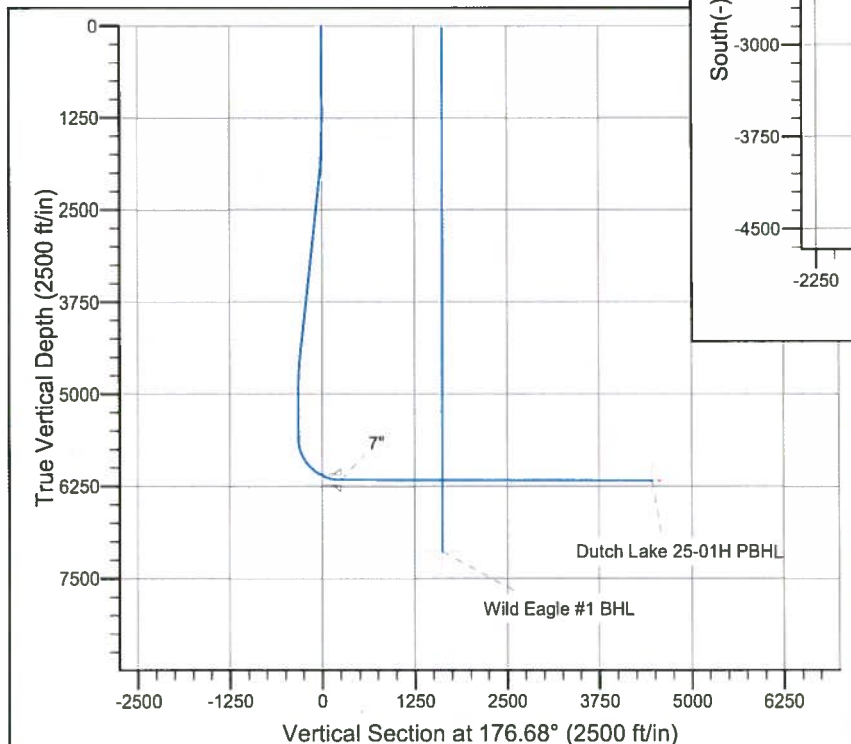
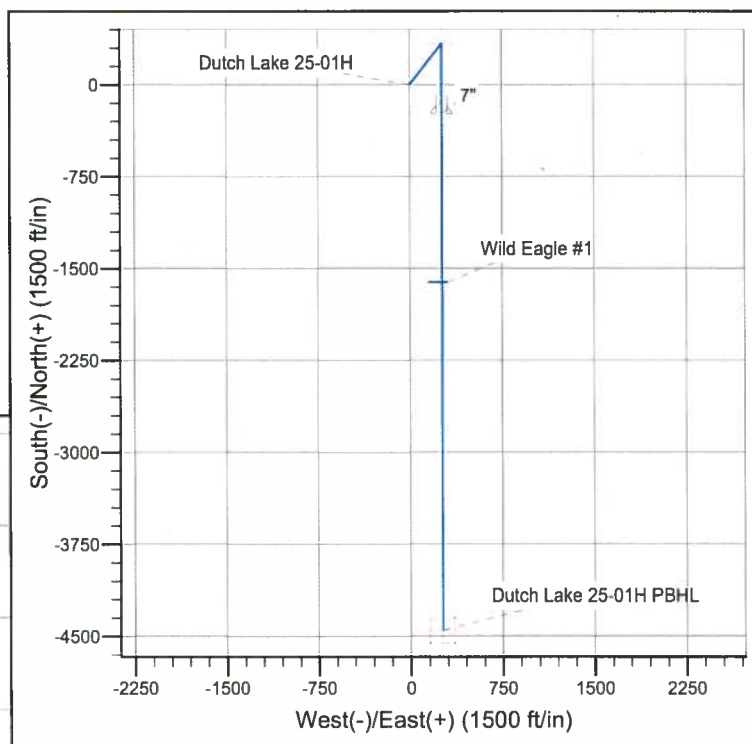
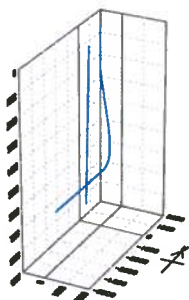
WELL DETAILS: Dutch Lake 25-01H

Ground Level: 4750.5

+N/-S	+E/-W	Northing	Easting	Latitude	Longitude	Slot
0.0	0.0	1435606.71	3339543.794	40° 31' 21.799 N	104° 16' 42.989 W	

WELLBORE TARGET DETAILS (LAT/LONG)

Name	TVD	+N/-S	+E/-W	Latitude	Longitude	Shape
BTV 25-01H	5000.0	336.0	261.0	40° 31' 25.119 N	104° 16' 39.609 W	Point
Dutch Lake 25-01H PBHL	6175.0	-4453.7	258.6	40° 30' 37.789 N	104° 16' 39.641 W	Rectangle (Sides: L200.0 W200.0)



BILL BARRETT CORP

WELD COUNTY, COLORADO

Dutch Lake 25-01H

Dutch Lake 25-01H

Dutch Lake 25-01H

Design #1

Anticollision Report

03 July, 2012

Bill Barrett Corp
Anticollision Report

Company:	BILL BARRETT CORP	Local Co-ordinate Reference:	Well Dutch Lake 25-01H
Project:	WELD COUNTY, COLORADO	TVD Reference:	KB @ 4772.5ft (Original Well Elev)
Reference Site:	Dutch Lake 25-01H	MD Reference:	KB @ 4772.5ft (Original Well Elev)
Site Error:	0.0ft	North Reference:	True
Reference Well:	Dutch Lake 25-01H	Survey Calculation Method:	Minimum Curvature
Well Error:	0.0ft	Output errors are at	2.00 sigma
Reference Wellbore	Dutch Lake 25-01H	Database:	Compass
Reference Design:	Design #1	Offset TVD Reference:	Offset Datum

Reference	Design #1		
Filter type:	NO GLOBAL FILTER: Using user defined selection & filtering criteria		
Interpolation Method:	Stations	Error Model:	ISCWSA
Depth Range:	Unlimited	Scan Method:	Closest Approach 3D
Results Limited by:	Maximum center-center distance of 10,000.0ft	Error Surface:	Elliptical Conic
Warning Levels Evaluated at:	2.00 Sigma		

Survey Tool Program		Date	6/26/2012		
From (ft)	To (ft)	Survey (Wellbore)	Tool Name	Description	
0.0	10,737.5	Design #1 (Dutch Lake 25-01H)	MWD	MWD - Standard	

Summary						
Site Name	Reference Measured Depth (ft)	Offset Measured Depth (ft)	Distance Between Centres (ft)	Distance Between Ellipses (ft)	Separation Factor	Warning
Offset Well - Wellbore - Design						
Dutch Lake 25-01H						
Wild Eagle #1 - Wild Eagle #1 - Design #1	7,898.7	6,137.2	88.4	39.7	1.816	CC
Wild Eagle #1 - Wild Eagle #1 - Design #1	7,900.0	6,137.2	88.4	39.7	1.816	ES, SF

Offset Design		Dutch Lake 25-01H - Wild Eagle #1 - Wild Eagle #1 - Design #1											Offset Site Error:		0.0 ft	
Survey Program:		0-MWD												Offset Well Error:		0.0 ft
Reference		Offset		Semi Major Axis			Distance									
Measured Depth	Vertical Depth	Measured Depth	Vertical Depth	Reference	Offset	Highside Toolface	Offset Wellbore Centre +N/-S	+E/-W	Between Centres	Between Ellipses	Minimum Separation	Separation Factor	Warning			
(ft)	(ft)	(ft)	(ft)	(ft)	(ft)	(°)	(ft)	(ft)	(ft)	(ft)	(ft)					
0.0	0.0	0.0	0.0		0.0	169.44	-1,615.0	301.0	1,643.1							
100.0	100.0	69.5	69.5	0.1	0.1	169.44	-1,615.0	301.0	1,642.8	1,642.6	0.17	9,906.805				
200.0	200.0	169.5	169.5	0.3	0.3	169.44	-1,615.0	301.0	1,642.8	1,642.2	0.58	2,827.451				
300.0	300.0	271.2	271.2	0.5	0.5	169.44	-1,615.0	300.9	1,642.8	1,641.8	1.03	1,592.470				
400.0	400.0	376.1	376.1	0.8	0.7	169.51	-1,615.0	299.1	1,642.5	1,641.0	1.48	1,112.226				
500.0	500.0	476.1	476.1	1.0	0.9	169.58	-1,615.0	296.9	1,642.1	1,640.2	1.92	856.611				
600.0	600.0	576.1	576.0	1.2	1.2	169.66	-1,615.0	294.7	1,641.7	1,639.3	2.36	695.174				
700.0	700.0	676.1	676.0	1.4	1.4	169.73	-1,615.0	292.5	1,641.3	1,638.5	2.81	584.353				
800.0	800.0	776.0	775.9	1.7	1.6	169.81	-1,615.0	290.3	1,640.9	1,637.6	3.26	503.745				
900.0	900.0	876.0	875.9	1.9	1.8	169.89	-1,615.0	288.1	1,640.5	1,636.8	3.71	442.543				
1,000.0	1,000.0	976.0	975.8	2.1	2.1	169.96	-1,615.0	285.9	1,640.1	1,636.0	4.16	394.522				
1,100.0	1,100.0	1,076.0	1,075.8	2.3	2.3	170.04	-1,615.0	283.6	1,639.7	1,635.1	4.61	355.853				
1,200.0	1,200.0	1,175.9	1,175.7	2.6	2.5	170.11	-1,615.0	281.4	1,639.3	1,634.3	5.06	324.054				
1,300.0	1,300.0	1,275.9	1,275.7	2.8	2.7	170.19	-1,615.0	279.2	1,639.0	1,633.5	5.51	297.448				
1,400.0	1,400.0	1,375.9	1,375.6	3.0	3.0	170.27	-1,615.0	277.0	1,638.6	1,632.6	5.96	274.861				
1,500.0	1,500.0	1,475.9	1,475.6	3.2	3.2	170.34	-1,615.0	274.8	1,638.2	1,631.8	6.41	255.448				
1,521.0	1,521.0	1,496.8	1,496.5	3.3	3.2	132.52	-1,615.0	274.3	1,638.2	1,631.7	6.52	251.172				
1,600.0	1,600.0	1,575.8	1,575.5	3.5	3.4	132.61	-1,615.0	272.6	1,638.7	1,631.9	6.88	238.279				
1,700.0	1,699.9	1,675.7	1,675.3	3.7	3.6	132.76	-1,615.0	270.4	1,641.0	1,633.7	7.32	224.074				
1,800.0	1,799.7	1,775.3	1,775.0	3.9	3.9	132.96	-1,615.0	268.2	1,645.1	1,637.4	7.77	211.720				
1,900.0	1,899.3	1,874.8	1,874.4	4.1	4.1	133.20	-1,615.0	266.0	1,651.0	1,642.8	8.22	200.885				
2,000.0	1,998.6	1,973.9	1,973.5	4.4	4.3	133.48	-1,615.0	263.8	1,658.8	1,650.1	8.67	191.302				
2,046.7	2,044.8	2,020.0	2,019.6	4.5	4.4	133.63	-1,615.0	262.7	1,663.1	1,654.2	8.88	187.194				
2,100.0	2,097.6	2,072.7	2,072.2	4.6	4.6	133.86	-1,615.0	261.6	1,668.2	1,659.1	9.14	182.612				
2,200.0	2,196.6	2,171.4	2,171.0	4.9	4.8	134.28	-1,615.0	259.4	1,677.9	1,668.3	9.61	174.587				

CC - Min centre to center distance or convergent point, SF - min separation factor, ES - min ellipse separation

Bill Barrett Corp
Anticollision Report

Company:	BILL BARRETT CORP	Local Co-ordinate Reference:	Well Dutch Lake 25-01H
Project:	WELD COUNTY, COLORADO	TVD Reference:	KB @ 4772.5ft (Original Well Elev)
Reference Site:	Dutch Lake 25-01H	MD Reference:	KB @ 4772.5ft (Original Well Elev)
Site Error:	0.0ft	North Reference:	True
Reference Well:	Dutch Lake 25-01H	Survey Calculation Method:	Minimum Curvature
Well Error:	0.0ft	Output errors are at	2.00 sigma
Reference Wellbore	Dutch Lake 25-01H	Database:	Compass
Reference Design:	Design #1	Offset TVD Reference:	Offset Datum

Offset Design Dutch Lake 25-01H - Wild Eagle #1 - Wild Eagle #1 - Design #1												Offset Site Error:	0.0 ft
Survey Program: 0-MWD												Offset Well Error:	0.0 ft
Measured Depth (ft)	Vertical Depth (ft)	Measured Depth (ft)	Vertical Depth (ft)	Reference (ft)	Offset (ft)	Highside Toolface (°)	Offset Wellbore Centre +N/-S (ft)	Offset Wellbore Centre +E/-W (ft)	Between Centres (ft)	Between Ellipses (ft)	Minimum Separation (ft)	Separation Factor	Warning
2,300.0	2,295.5	2,270.2	2,269.7	5.2	5.0	134.70	-1,615.0	257.2	1,687.6	1,677.5	10.09	167.243	
2,400.0	2,394.5	2,369.0	2,368.5	5.5	5.2	135.11	-1,615.0	255.0	1,697.5	1,686.9	10.58	160.513	
2,500.0	2,493.5	2,467.7	2,467.2	5.7	5.5	135.52	-1,615.0	252.8	1,707.4	1,696.4	11.06	154.334	
2,600.0	2,592.5	2,566.5	2,565.9	6.0	5.7	135.92	-1,615.0	250.6	1,717.4	1,705.9	11.55	148.651	
2,700.0	2,691.5	2,665.2	2,664.7	6.3	5.9	136.32	-1,615.0	248.5	1,727.6	1,715.5	12.05	143.412	
2,800.0	2,790.4	2,764.0	2,763.4	6.6	6.1	136.71	-1,615.0	246.3	1,737.8	1,725.2	12.54	138.572	
2,900.0	2,889.4	2,862.8	2,862.1	7.0	6.4	137.10	-1,615.0	244.1	1,748.0	1,735.0	13.04	134.093	
3,000.0	2,988.4	2,961.5	2,960.9	7.3	6.6	137.49	-1,615.0	241.9	1,758.4	1,744.8	13.53	129.938	
3,100.0	3,087.4	3,060.3	3,059.6	7.6	6.8	137.87	-1,615.0	239.7	1,768.8	1,754.8	14.03	126.076	
3,200.0	3,186.3	3,159.0	3,158.3	7.9	7.0	138.25	-1,615.0	237.5	1,779.3	1,764.8	14.53	122.479	
3,300.0	3,285.3	3,257.8	3,257.1	8.2	7.3	138.62	-1,615.0	235.3	1,789.9	1,774.9	15.03	119.123	
3,400.0	3,384.3	3,356.6	3,355.8	8.6	7.5	138.99	-1,615.0	233.1	1,800.6	1,785.0	15.52	115.985	
3,500.0	3,483.3	3,455.3	3,454.5	8.9	7.7	139.35	-1,615.0	231.0	1,811.3	1,795.3	16.02	113.047	
3,600.0	3,582.3	3,554.1	3,553.3	9.2	7.9	139.71	-1,615.0	228.8	1,822.1	1,805.6	16.52	110.291	
3,700.0	3,681.2	3,652.8	3,652.0	9.5	8.2	140.06	-1,615.0	226.6	1,833.0	1,816.0	17.02	107.702	
3,800.0	3,780.2	3,751.6	3,750.7	9.9	8.4	140.41	-1,615.0	224.4	1,843.9	1,826.4	17.52	105.265	
3,900.0	3,879.2	3,850.4	3,849.5	10.2	8.6	140.76	-1,615.0	222.2	1,855.0	1,836.9	18.01	102.968	
4,000.0	3,978.2	3,949.1	3,948.2	10.5	8.9	141.10	-1,615.0	220.0	1,866.0	1,847.5	18.51	100.801	
4,100.0	4,077.1	4,047.9	4,047.0	10.9	9.1	141.44	-1,615.0	217.8	1,877.2	1,858.2	19.01	98.752	
4,200.0	4,176.1	4,146.6	4,145.7	11.2	9.3	141.78	-1,615.0	215.7	1,888.4	1,868.9	19.51	96.813	
4,300.0	4,275.1	4,245.4	4,244.4	11.5	9.5	142.11	-1,615.0	213.5	1,899.7	1,879.7	20.00	94.976	
4,400.0	4,374.1	4,344.2	4,343.2	11.9	9.8	142.43	-1,615.0	211.3	1,911.0	1,890.5	20.50	93.233	
4,481.9	4,455.2	4,425.1	4,424.1	12.1	9.9	142.70	-1,615.0	209.5	1,920.4	1,899.4	20.90	91.870	
4,500.0	4,473.1	4,442.9	4,441.9	12.2	10.0	142.77	-1,615.0	209.1	1,922.4	1,901.4	20.99	91.585	
4,600.0	4,572.3	4,541.9	4,540.9	12.4	10.2	143.15	-1,615.0	206.9	1,932.4	1,911.0	21.43	90.163	
4,700.0	4,671.8	4,641.3	4,640.2	12.7	10.4	143.46	-1,615.0	204.7	1,940.4	1,918.6	21.86	88.758	
4,800.0	4,771.5	4,740.9	4,739.8	12.9	10.7	143.71	-1,615.0	202.5	1,946.4	1,924.1	22.28	87.370	
4,900.0	4,871.4	4,840.7	4,839.6	13.1	10.9	143.89	-1,615.0	200.3	1,950.2	1,927.5	22.68	85.996	
5,000.0	4,971.4	4,940.6	4,939.5	13.2	11.1	144.01	-1,615.0	198.1	1,951.9	1,928.9	23.06	84.634	
5,028.6	5,000.0	4,969.2	4,968.1	13.3	11.2	-178.13	-1,615.0	197.4	1,952.0	1,928.9	23.17	84.243	
5,100.0	5,071.4	5,040.6	5,039.4	13.4	11.3	-178.09	-1,615.0	195.9	1,952.1	1,928.6	23.46	83.203	
5,200.0	5,171.4	5,140.6	5,139.4	13.6	11.6	-178.02	-1,615.0	193.6	1,952.2	1,928.3	23.89	81.719	
5,300.0	5,271.4	5,240.5	5,239.3	13.8	11.8	-177.96	-1,615.0	191.4	1,952.2	1,927.9	24.32	80.284	
5,400.0	5,371.4	5,340.5	5,339.3	13.9	12.0	-177.89	-1,615.0	189.2	1,952.3	1,927.6	24.75	78.896	
5,500.0	5,471.4	5,440.5	5,439.2	14.1	12.3	-177.83	-1,615.0	187.0	1,952.4	1,927.2	25.18	77.553	
5,600.0	5,571.4	5,540.5	5,539.2	14.3	12.5	-177.76	-1,615.0	184.8	1,952.5	1,926.9	25.61	76.253	
5,620.6	5,592.0	5,561.1	5,559.8	14.3	12.5	-177.75	-1,615.0	184.3	1,952.5	1,926.8	25.69	75.990	
5,650.0	5,621.4	5,590.4	5,589.1	14.4	12.6	2.24	-1,615.0	183.7	1,951.8	1,926.0	25.75	75.793	
5,700.0	5,671.1	5,640.2	5,638.9	14.4	12.7	2.30	-1,615.0	182.6	1,947.1	1,921.4	25.71	75.747	
5,750.0	5,720.3	5,689.3	5,688.0	14.5	12.8	2.38	-1,615.0	181.5	1,938.1	1,912.6	25.49	76.036	
5,800.0	5,768.5	5,737.5	5,736.2	14.4	12.9	2.49	-1,615.0	180.4	1,924.8	1,899.7	25.11	76.670	
5,850.0	5,815.3	5,784.3	5,783.0	14.4	13.1	2.63	-1,615.0	179.4	1,907.4	1,882.9	24.56	77.664	
5,900.0	5,860.4	5,829.5	5,828.1	14.4	13.2	2.80	-1,615.0	178.4	1,886.0	1,862.2	23.86	79.042	
5,950.0	5,903.5	5,872.5	5,871.2	14.3	13.3	3.03	-1,615.0	177.4	1,860.8	1,837.8	23.02	80.831	
6,000.0	5,944.3	5,913.3	5,911.9	14.3	13.3	3.31	-1,615.0	176.5	1,831.9	1,809.8	22.05	83.060	
6,050.0	5,982.3	5,951.3	5,949.9	14.2	13.4	3.66	-1,615.0	175.7	1,799.5	1,778.5	20.98	85.756	
6,100.0	6,017.4	5,986.4	5,985.0	14.1	13.5	4.12	-1,615.0	174.9	1,764.0	1,744.2	19.84	88.927	
6,150.0	6,049.2	6,018.2	6,016.8	14.1	13.6	4.71	-1,615.0	174.2	1,725.5	1,706.9	18.65	92.542	
6,200.0	6,077.6	6,046.5	6,045.1	14.0	13.7	5.52	-1,615.0	173.6	1,684.5	1,667.0	17.46	96.478	
6,250.0	6,102.2	6,071.2	6,069.8	14.0	13.7	6.64	-1,615.0	173.0	1,641.1	1,624.7	16.34	100.430	
6,300.0	6,123.0	6,092.0	6,090.5	13.9	13.8	8.28	-1,615.0	172.6	1,595.7	1,580.3	15.38	103.738	
6,350.0	6,139.7	6,108.7	6,107.3	14.0	13.8	10.91	-1,615.0	172.2	1,548.7	1,534.0	14.74	105.049	

CC - Min centre to center distance or convergent point, SF - min separation factor, ES - min ellipse separation

Bill Barrett Corp
Anticollision Report

Company:	BILL BARRETT CORP	Local Co-ordinate Reference:	Well Dutch Lake 25-01H
Project:	WELD COUNTY, COLORADO	TVD Reference:	KB @ 4772.5ft (Original Well Elev)
Reference Site:	Dutch Lake 25-01H	MD Reference:	KB @ 4772.5ft (Original Well Elev)
Site Error:	0.0ft	North Reference:	True
Reference Well:	Dutch Lake 25-01H	Survey Calculation Method:	Minimum Curvature
Well Error:	0.0ft	Output errors are at	2.00 sigma
Reference Wellbore	Dutch Lake 25-01H	Database:	Compass
Reference Design:	Design #1	Offset TVD Reference:	Offset Datum

Offset Design Dutch Lake 25-01H - Wild Eagle #1 - Wild Eagle #1 - Design #1													Offset Site Error:	0.0 ft	
Survey Program:		0-MWD												Offset Well Error:	0.0 ft
Reference		Offset		Semi Major Axis			Distance							Warning	
Measured Depth (ft)	Vertical Depth (ft)	Measured Depth (ft)	Vertical Depth (ft)	Reference (ft)	Offset (ft)	Highside Toolface (°)	Offset Wellbore Centre +N/-S (ft)	Centre +E/-W (ft)	Between Centres (ft)	Between Ellipses (ft)	Minimum Separation (ft)	Separation Factor			
6,400.0	6,152.3	6,121.3	6,119.8	14.2	13.8	15.62	-1,615.0	171.9	1,500.4	1,485.6	14.78	101.531			
6,450.0	6,160.6	6,129.6	6,128.1	14.5	13.8	26.10	-1,615.0	171.7	1,451.2	1,434.5	16.69	86.959			
6,500.0	6,164.6	6,133.5	6,132.1	14.8	13.9	59.36	-1,615.0	171.7	1,401.5	1,376.6	24.92	56.243			
6,519.3	6,165.0	6,133.9	6,132.5	15.0	13.9	86.58	-1,615.0	171.6	1,382.3	1,353.9	28.34	48.776			
6,600.0	6,165.2	6,134.1	6,132.7	15.7	13.9	86.71	-1,615.0	171.6	1,301.7	1,272.7	29.02	44.864			
6,700.0	6,165.4	6,134.3	6,132.9	16.7	13.9	86.87	-1,615.0	171.6	1,202.0	1,172.0	30.02	40.041			
6,800.0	6,165.6	6,134.6	6,133.2	17.9	13.9	87.02	-1,615.0	171.6	1,102.3	1,071.1	31.18	35.355			
6,900.0	6,165.9	6,134.8	6,133.4	19.2	13.9	87.18	-1,615.0	171.6	1,002.6	970.2	32.46	30.887			
7,000.0	6,166.1	6,135.1	6,133.6	20.5	13.9	87.33	-1,615.0	171.6	903.1	869.2	33.85	26.680			
7,100.0	6,166.3	6,135.3	6,133.9	22.0	13.9	87.49	-1,615.0	171.6	803.6	768.3	35.32	22.754			
7,200.0	6,166.6	6,135.5	6,134.1	23.5	13.9	87.64	-1,615.0	171.6	704.3	667.4	36.85	19.110			
7,300.0	6,166.8	6,135.8	6,134.4	25.1	13.9	87.80	-1,615.0	171.6	605.2	566.8	38.44	15.742			
7,400.0	6,167.1	6,136.0	6,134.6	26.7	13.9	87.95	-1,615.0	171.6	506.5	466.4	40.08	12.637			
7,500.0	6,167.3	6,136.3	6,134.8	28.4	13.9	88.11	-1,615.0	171.6	408.4	366.6	41.75	9.781			
7,600.0	6,167.5	6,136.5	6,135.1	30.1	13.9	88.27	-1,615.0	171.6	311.5	268.1	43.46	7.169			
7,700.0	6,167.8	6,136.7	6,135.3	31.8	13.9	88.42	-1,615.0	171.6	217.5	172.3	45.19	4.813			
7,800.0	6,168.0	6,137.0	6,135.6	33.5	13.9	88.58	-1,615.0	171.6	132.5	85.6	46.94	2.823			
7,898.7	6,168.3	6,137.2	6,135.8	35.2	13.9	88.73	-1,615.0	171.6	88.4	39.7	48.68	1.816 CC			
7,900.0	6,168.3	6,137.2	6,135.8	35.3	13.9	88.73	-1,615.0	171.6	88.4	39.7	48.71	1.816 ES, SF			
8,000.0	6,168.5	6,137.5	6,136.0	37.0	13.9	88.89	-1,615.0	171.6	134.5	84.0	50.49	2.663			
8,100.0	6,168.7	6,137.7	6,136.3	38.8	13.9	89.04	-1,615.0	171.6	219.8	167.6	52.29	4.204			
8,200.0	6,169.0	6,138.0	6,136.5	40.6	13.9	89.20	-1,615.0	171.6	314.0	259.9	54.10	5.804			
8,300.0	6,169.2	6,138.2	6,136.8	42.4	13.9	89.36	-1,615.0	171.6	410.9	355.0	55.92	7.348			
8,400.0	6,169.5	6,138.4	6,137.0	44.3	13.9	89.51	-1,615.0	171.5	509.0	451.3	57.75	8.814			
8,500.0	6,169.7	6,138.7	6,137.2	46.1	13.9	89.67	-1,615.0	171.5	607.7	548.2	59.59	10.199			
8,600.0	6,169.9	6,138.9	6,137.5	47.9	13.9	89.82	-1,615.0	171.5	706.8	645.4	61.43	11.506			
8,700.0	6,170.2	6,139.2	6,137.7	49.8	13.9	89.98	-1,615.0	171.5	806.1	742.9	63.28	12.738			
8,800.0	6,170.4	6,139.4	6,138.0	51.6	13.9	90.13	-1,615.0	171.5	905.6	840.5	65.14	13.903			
8,900.0	6,170.6	6,139.6	6,138.2	53.5	13.9	90.29	-1,615.0	171.5	1,005.2	938.2	67.00	15.003			
9,000.0	6,170.9	6,139.9	6,138.4	55.3	13.9	90.45	-1,615.0	171.5	1,104.8	1,036.0	68.86	16.044			
9,100.0	6,171.1	6,140.1	6,138.7	57.2	13.9	90.60	-1,615.0	171.5	1,204.5	1,133.8	70.73	17.030			
9,200.0	6,171.4	6,140.4	6,138.9	59.1	13.9	90.76	-1,615.0	171.5	1,304.3	1,231.7	72.60	17.965			
9,300.0	6,171.6	6,140.6	6,139.2	60.9	13.9	90.91	-1,615.0	171.5	1,404.1	1,329.6	74.47	18.853			
9,400.0	6,171.8	6,140.8	6,139.4	62.8	13.9	91.07	-1,615.0	171.5	1,503.9	1,427.5	76.35	19.697			
9,500.0	6,172.1	6,141.1	6,139.6	64.7	13.9	91.22	-1,615.0	171.5	1,603.7	1,525.5	78.23	20.501			
9,600.0	6,172.3	6,141.3	6,139.9	66.6	13.9	91.38	-1,615.0	171.5	1,703.6	1,623.5	80.11	21.266			
9,700.0	6,172.6	6,141.6	6,140.1	68.4	13.9	91.53	-1,615.0	171.5	1,803.4	1,721.5	81.99	21.996			
9,800.0	6,172.8	6,141.8	6,140.4	70.3	13.9	91.69	-1,615.0	171.5	1,903.3	1,819.5	83.87	22.694			
9,900.0	6,173.0	6,142.0	6,140.6	72.2	13.9	91.84	-1,615.0	171.5	2,003.2	1,917.5	85.75	23.360			
10,000.0	6,173.3	6,142.3	6,140.8	74.1	13.9	92.00	-1,615.0	171.5	2,103.1	2,015.5	87.64	23.998			
10,100.0	6,173.5	6,142.5	6,141.1	76.0	13.9	92.15	-1,615.0	171.5	2,203.1	2,113.5	89.53	24.608			
10,200.0	6,173.8	6,142.8	6,141.3	77.9	13.9	92.31	-1,615.0	171.5	2,303.0	2,211.6	91.41	25.193			
10,300.0	6,174.0	6,143.0	6,141.6	79.8	13.9	92.46	-1,615.0	171.4	2,402.9	2,309.6	93.30	25.755			
10,400.0	6,174.2	6,143.2	6,141.8	81.7	13.9	92.62	-1,615.0	171.4	2,502.8	2,407.7	95.19	26.294			
10,500.0	6,174.5	6,143.5	6,142.0	83.6	13.9	92.77	-1,615.0	171.4	2,602.8	2,505.7	97.07	26.812			
10,600.0	6,174.7	6,143.7	6,142.3	85.5	13.9	92.93	-1,615.0	171.4	2,702.7	2,603.8	98.96	27.311			
10,700.0	6,175.0	6,144.0	6,142.5	87.4	13.9	93.08	-1,615.0	171.4	2,802.7	2,701.8	100.85	27.790			
10,737.3	6,175.0	6,144.0	6,142.6	88.1	13.9	93.14	-1,615.0	171.4	2,840.0	2,738.4	101.56	27.965			

CC - Min centre to center distance or convergent point, SF - min separation factor, ES - min ellipse separation

Bill Barrett Corp

Anticollision Report

Company:	BILL BARRETT CORP	Local Co-ordinate Reference:	Well Dutch Lake 25-01H
Project:	WELD COUNTY, COLORADO	TVD Reference:	KB @ 4772.5ft (Original Well Elev)
Reference Site:	Dutch Lake 25-01H	MD Reference:	KB @ 4772.5ft (Original Well Elev)
Site Error:	0.0ft	North Reference:	True
Reference Well:	Dutch Lake 25-01H	Survey Calculation Method:	Minimum Curvature
Well Error:	0.0ft	Output errors are at	2.00 sigma
Reference Wellbore	Dutch Lake 25-01H	Database:	Compass
Reference Design:	Design #1	Offset TVD Reference:	Offset Datum

Reference Depths are relative to KB @ 4772.5ft (Original Well Elev)

Offset Depths are relative to Offset Datum

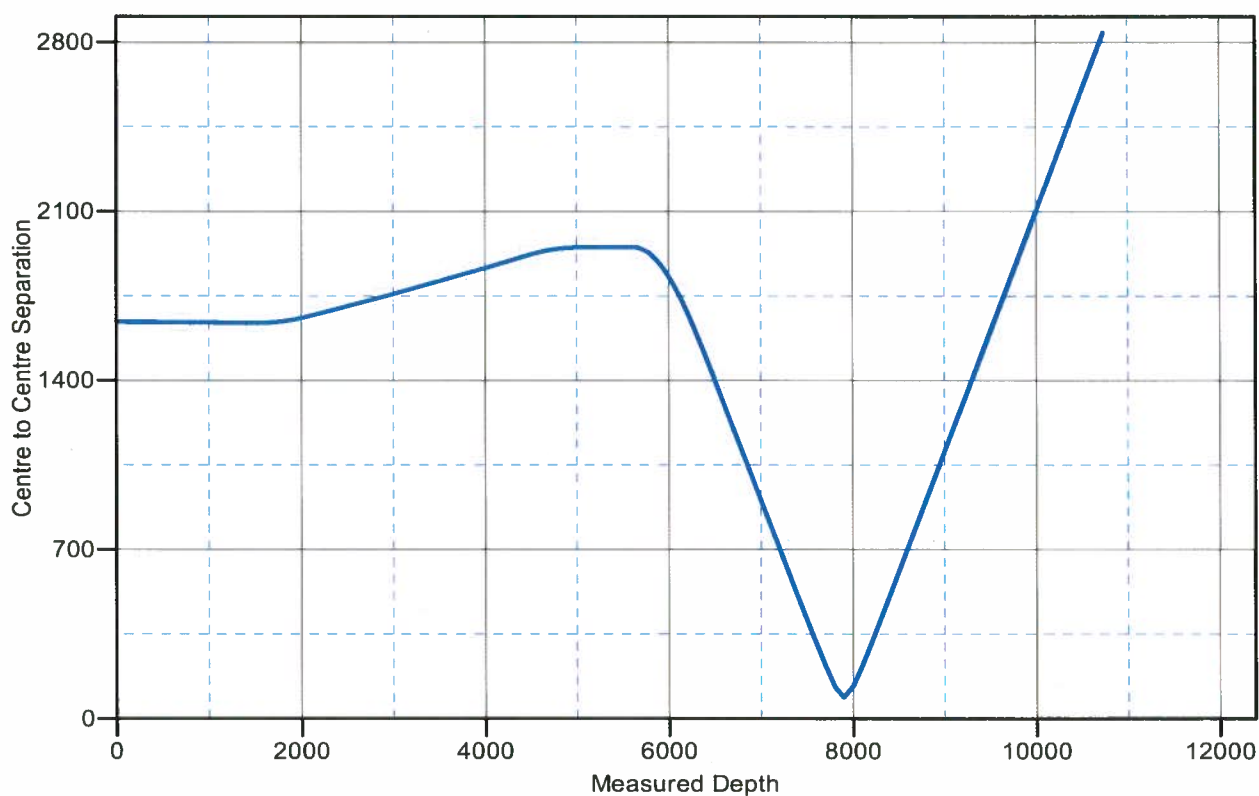
Central Meridian is 105° 30' 0.000 W °

Coordinates are relative to: Dutch Lake 25-01H

Coordinate System is US State Plane 1983, Colorado Northern Zone

Grid Convergence at Surface is: 0.79°

Ladder Plot



LEGEND

— Wild Eagle #1, Wild Eagle #1, Design #1 V0

Bill Barrett Corp

Anticollision Report

Company:	BILL BARRETT CORP	Local Co-ordinate Reference:	Well Dutch Lake 25-01H
Project:	WELD COUNTY, COLORADO	TVD Reference:	KB @ 4772.5ft (Original Well Elev)
Reference Site:	Dutch Lake 25-01H	MD Reference:	KB @ 4772.5ft (Original Well Elev)
Site Error:	0.0ft	North Reference:	True
Reference Well:	Dutch Lake 25-01H	Survey Calculation Method:	Minimum Curvature
Well Error:	0.0ft	Output errors are at	2.00 sigma
Reference Wellbore	Dutch Lake 25-01H	Database:	Compass
Reference Design:	Design #1	Offset TVD Reference:	Offset Datum

Reference Depths are relative to KB @ 4772.5ft (Original Well Elev)

Offset Depths are relative to Offset Datum

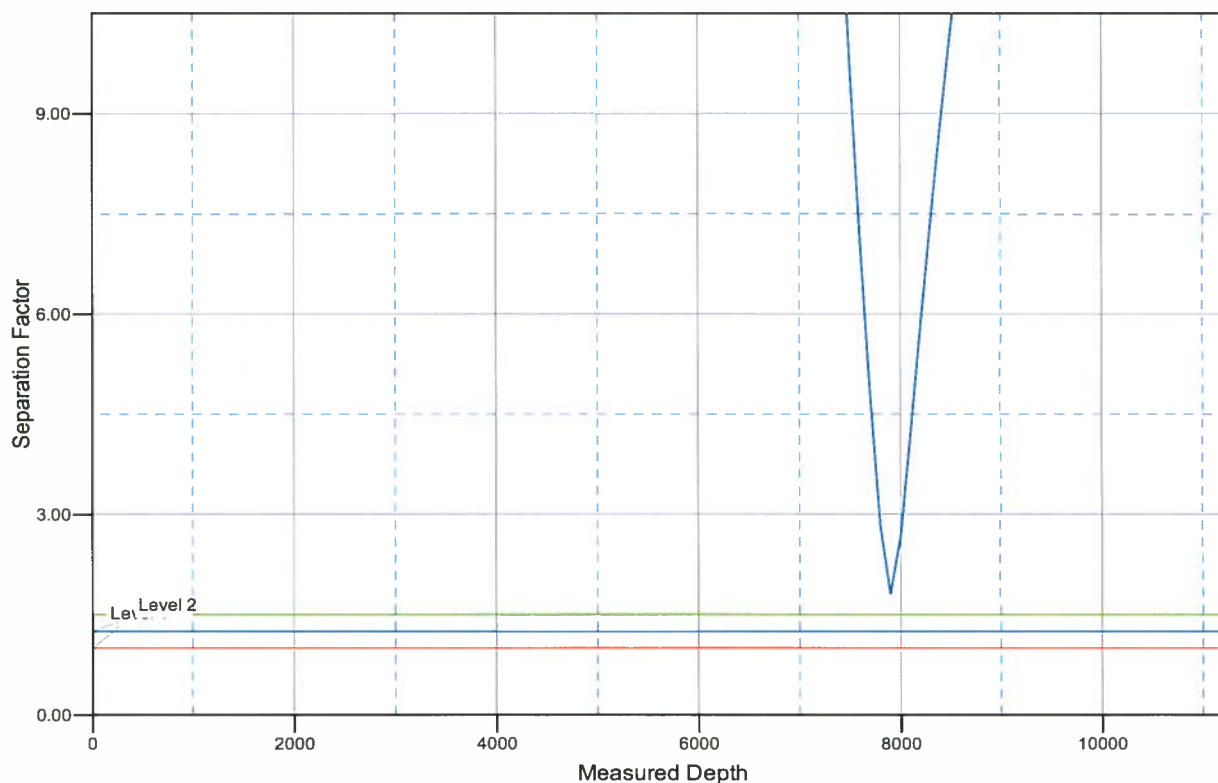
Central Meridian is 105° 30' 0.000 W °

Coordinates are relative to: Dutch Lake 25-01H

Coordinate System is US State Plane 1983, Colorado Northern Zone

Grid Convergence at Surface is: 0.79°

Separation Factor Plot



LEGEND

— Wild Eagle #1, Wild Eagle #1, Design #1 V0