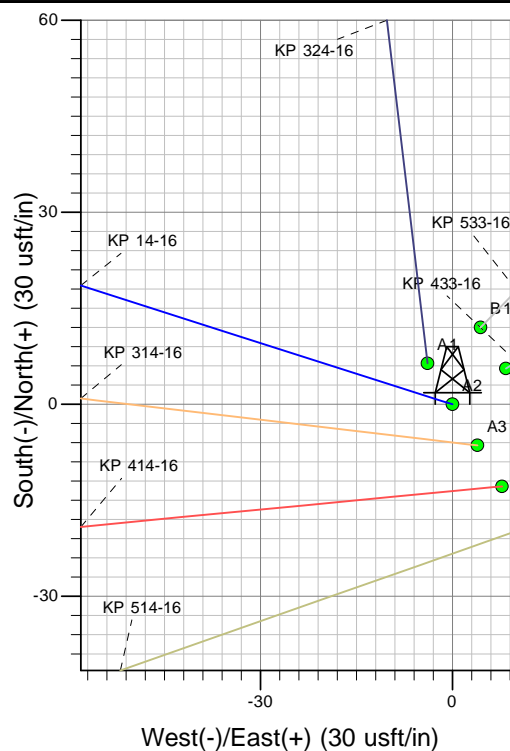
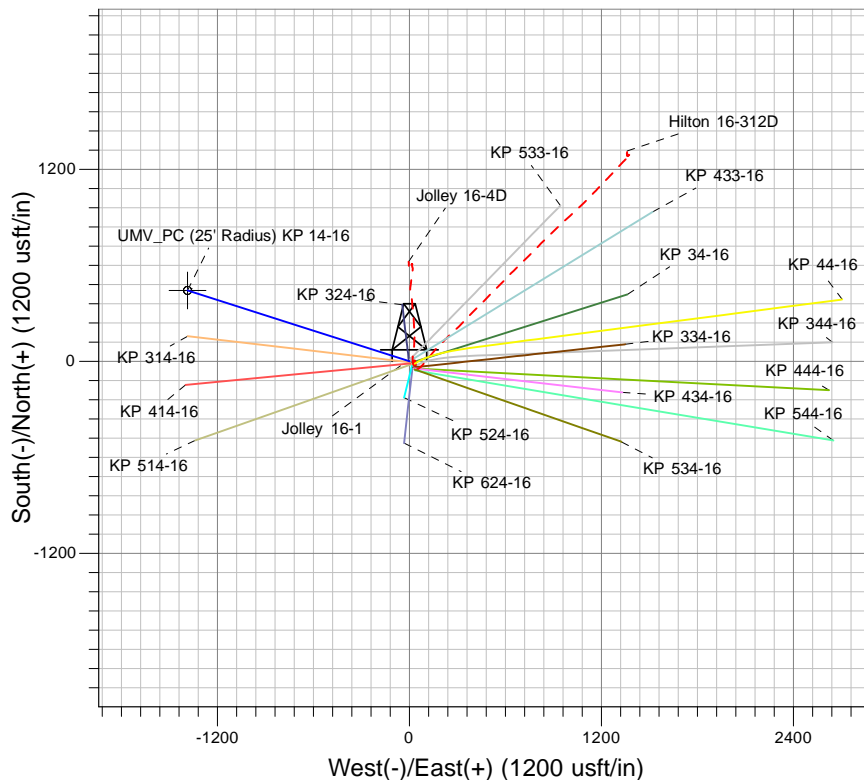
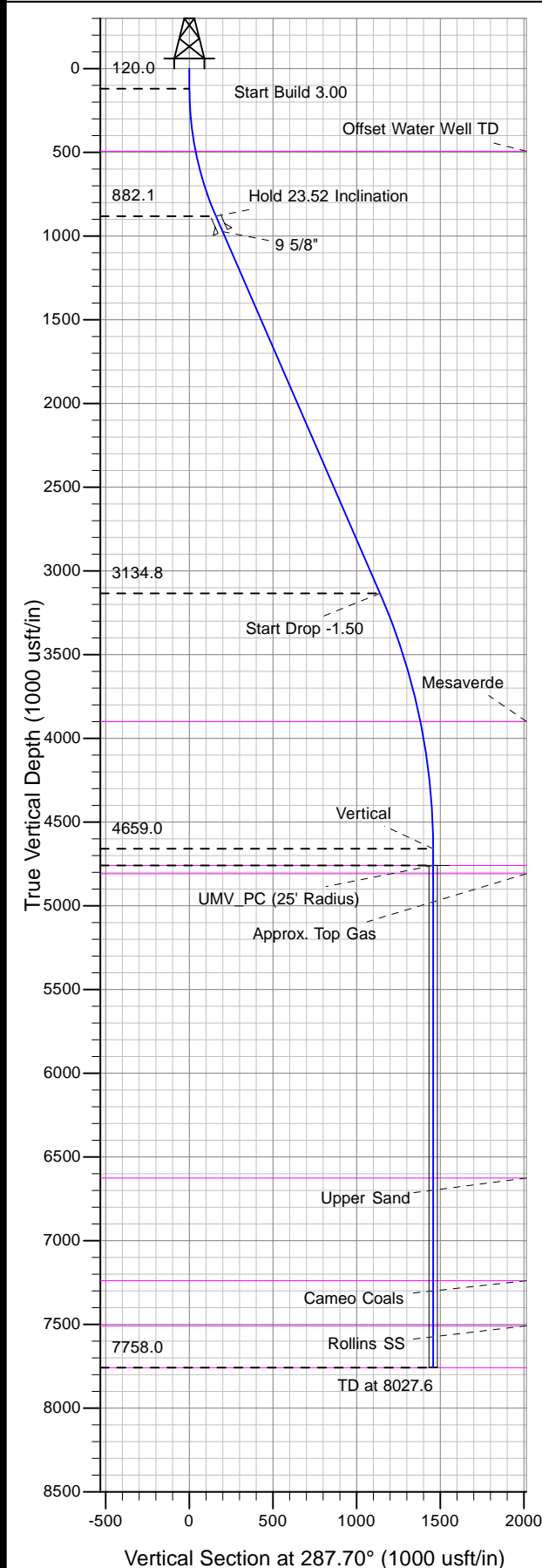




Well Name: KP 14-16
Surface Location: KP 24-16 Pad
North American Datum 1983 , US State Plane 1983 , Colorado Central Zone
Ground Elevation: 6788.0

+N/-S	+E/-W	Northing	Easting	Latitude	Longitude	Slot
0.0	0.0	1621842.40	2418393.95	39° 31' 21.421 N	107° 33' 42.928 W	A2
KELLY BUSHING @ 6814.0usft (Nabors 573 (26' RKB) kjs)						



Project: Sec. 16-T6S-R91W
Site: KP 24-16 Pad
Well: KP 14-16
Design #1 30Nov09 kjs

T Azimuths to True North
M Magnetic North: 10.33°
Magnetic Field
Strength: 52497.6snT
Dip Angle: 65.90°
Date: 11/30/2009
Model: IGRF2005-10

ANNOTATIONS

MD	Inc	Azi	TVD	+N/-S	+E/-W	Vsect	Departure	Annotation
120.0	0.00	0.00	120.0	0.0	0.0	0.0	0.0	Start Build 3.00
903.9	23.52	287.70	882.1	48.2	-151.1	158.6	158.6	Hold 23.52 Inclination
3360.7	23.52	287.70	3134.8	346.3	-1085.1	1139.0	1139.0	Start Drop -1.50
4928.6	0.00	0.00	4659.0	442.7	-1387.4	1456.3	1456.3	Vertical
5028.6	0.00	0.00	4759.0	442.7	-1387.4	1456.3	1456.3	UMW_PC
8027.6	0.00	0.00	7758.0	442.7	-1387.4	1456.3	1456.3	TD at 8027.6