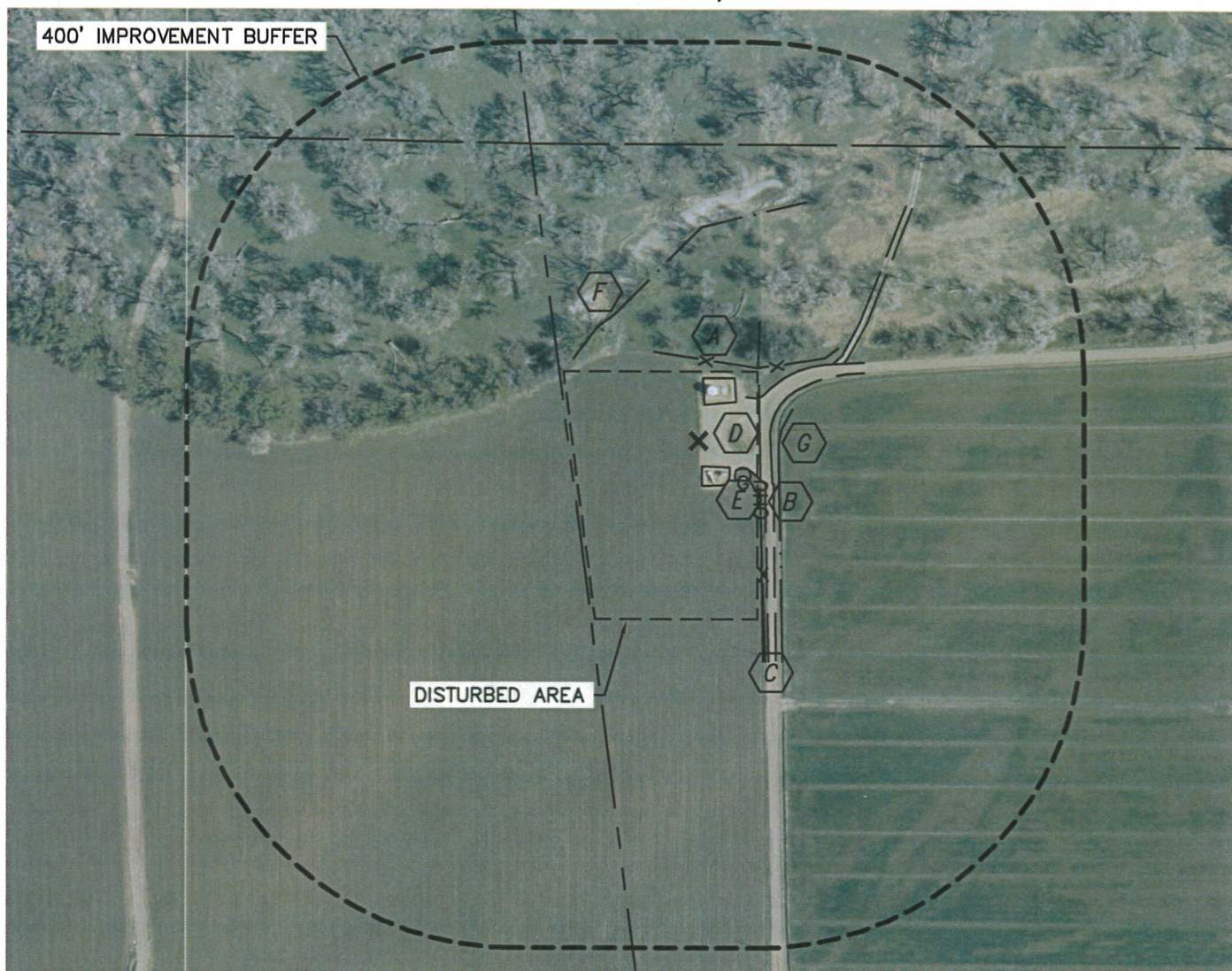


Lat40°, Inc. 1635 Foxtrail Drive, Suite 325 Loveland, CO 970-776-3321

PRODUCTION FACILITY LOCATION DRAWING

NICHOLS J35-33D, 32D

SECTION: 35
TOWNSHIP: 5N
RANGE: 66W



REFERENCE POINT LOCATION:

LATITUDE: 40.35129°N

LONGITUDE: 104.75396°W

ELEV: 4677'

PDOP: 1.4

DATE: 9/15/2011

OPERATOR: KYLE RUTZ

1/41/4: SW1/4SW1/4

FSL: 983'

FWL: 159'

DISTANCE TO WELL: 1297'

ASSOCIATED NEW WELLS:








NICHOLS J35-32D

NICHOLS J35-33D


ASSOCIATED EXISTING WELLS:

NICHOLS 35-12

IMPROVEMENTS:

-  FENCE 95' SE, 98' N
-  OVERHEAD UTILITY 75' E
-  ACCESS ROAD 84' E, 189' NE
-  EX. PRODUCTION EQUIPMENT (NOBLE) 31' S, 44' N
-  GAS STAND PIPE 69' SE
-  TOP DRAINAGE AREA 185' NW
-  DITCH 98' E

LEGEND

 - REFERENCE POINT
ALL DISTANCES ARE APPROXIMATE.

NEAREST: BUILDING 863' SW,
PUBLIC ROAD (CR 50) 967' S, ABOVE GROUND UTILITY 75' E,
RAILROAD 4670' S, PROPERTY LINE 63' E

