

TANK BATTERY LOCATION CERTIFICATE

SECTION 2, TOWNSHIP 6 NORTH, RANGE 63 WEST, 6TH P.M.

NW CRN SEC. 2
3.25" AC LS 10855

NE CRN SEC. 2
2.5" AC LS 9644

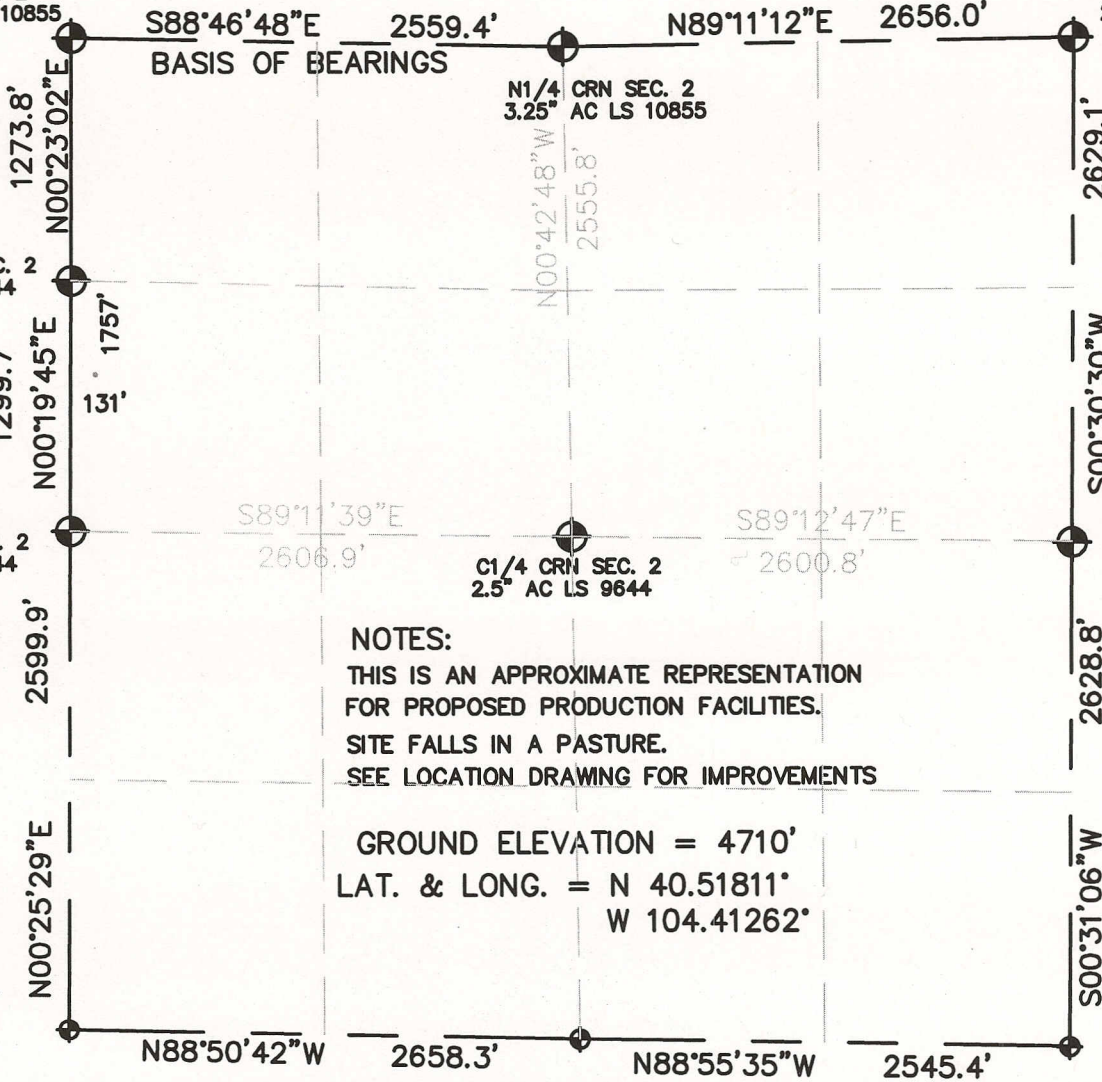
N1/16 CRN SEC. 2
2.5" AC LS 9644

W1/4 CRN SEC. 2
2.5" AC LS 9644

N1/4 CRN SEC. 2
3.25" AC LS 10855

C1/4 CRN SEC. 2
2.5" AC LS 9644

E1/4 CRN SEC. 2
2.5" AC LS 9644



NOTES:
THIS IS AN APPROXIMATE REPRESENTATION
FOR PROPOSED PRODUCTION FACILITIES.
SITE FALLS IN A PASTURE.
SEE LOCATION DRAWING FOR IMPROVEMENTS

GROUND ELEVATION = 4710'
LAT. & LONG. = N 40.51811°
W 104.41262°

I HEREBY STATE TO PERTOLEUM DEV. CORP. THAT THE SURFACE LOCATION FOR THE
BROWN NW TANK SITE IS LOCATED 1757' FNL & 131' FWL, SEC. 2, T6N, R63W, 6PM.



LEGEND

- = FOUND MONUMENT
- = PROPOSED WELL
- = BOTTOM HOLE



SCALE 1" = 1000'

ELEVATION SOURCE = USGS 7.5' QUAD.MAP CONTOURS
NGVD 1929 DATUM.

THE SURFACE LOCATION LAT. & LONG. ARE DIFFERENTIALLY
CORRECTED (NAD '83) USING (DGPS) WITH (PDOP) OF 1.9.

SHOWN DISTANCES ARE FIELD MEASURED - EXTERIOR SECTION LINES
ARE DRAWN TO SCALE (BEST APPROX. OR FOUND MONUMENT).

DISTANCES TO SITE SHOWN PERPENDICULAR
TO SECTION LINES.

THOMAS G. CARLSON, PLS 24657
HORSESHOE SURVEYING, LLC

THIS IS NOT A MONUMENTED BOUNDARY SURVEY, IT IS ONLY A
DRAWING INTENDED TO DEPICT THE TANK SITE TO SECTION LINES.

PREPARED BY: HORSESHOE SURVEYING, LLC PO BOX 150458 LAKEWOOD, CO 80215 (720)872-0196		WELL NAME: BROWN NW TANK SITE	
DRAWING DATE: 6-25-12		LOCATION: WELD COUNTY, CO NW1/4, SEC. 2, T6N, R63W, 6TH P.M.	
FIELD DATE: 4-14-12	BY: TGC	CHKD:	JOB NO. SHEET NO. 1 OF 1