



Kerr-McGee Oil & Gas Onshore LP

1099 18th Street, Suite 1800
Denver, CO 80202-1918
P.O. Box 173779
Denver, CO 80217-3779
720-929-6000

November 15, 2011

Department of Natural Resources
Oil and Gas Conservation Commission
The Chancery Building
1120 Lincoln St., Suite 801
Denver, CO 80203

Re: **30 Day Certification Letter - 318A-e**
RATTLER 26N-33HZ
Township 3 North, Range 66 West, Section 34: SW/4SW/4
Unit Spacing: 03N-66W-33 E/2E/2; 03N-66W-34 W/2W/2
Weld County, Colorado

Ladies/Gentlemen:

Kerr-McGee Oil and Gas Onshore LP ("KMG") hereby certifies to the Director that a thirty (30) day notice has been given by certified mail to all owners in the proposed wellbore spacing unit. We have not received any objections to such well location, proposed spacing unit, or additional producing formation. KMG hereby requests the Director to approve the boundary well.

If you have any questions or issues regarding this permit, please contact Cheryl Light at (720) 929-6461.

Very truly yours,

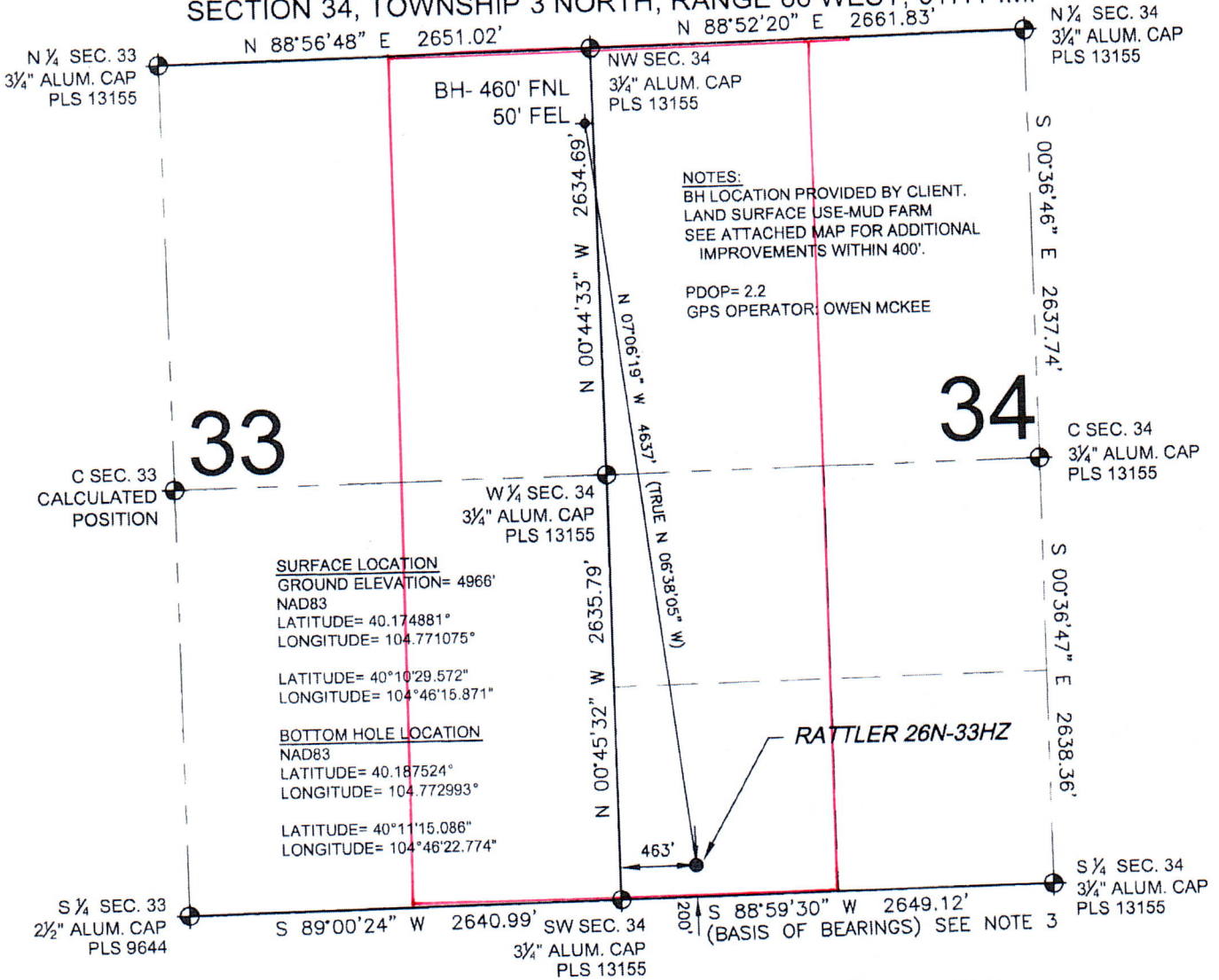
Kerr-McGee Oil and Gas Onshore LP

A handwritten signature in blue ink that reads "Rebecca Heim".

Rebecca Heim
Regulatory Analyst II

WELL LOCATION CERTIFICATE: RATTLER 26N-33HZ

SECTION 34, TOWNSHIP 3 NORTH, RANGE 66 WEST, 6TH P.M.



SURFACE LOCATION
GROUND ELEVATION= 4966'
NAD83
LATITUDE= 40.174881°
LONGITUDE= 104.771075°

LATITUDE= 40°10'29.572"
LONGITUDE= 104°46'15.871"

BOTTOM HOLE LOCATION
NAD83
LATITUDE= 40.187524°
LONGITUDE= 104.772993°

LATITUDE= 40°11'15.086"
LONGITUDE= 104°46'22.774"

NOTES:
BH LOCATION PROVIDED BY CLIENT.
LAND SURFACE USE-MUD FARM
SEE ATTACHED MAP FOR ADDITIONAL
IMPROVEMENTS WITHIN 400'.

PDOP= 2.2
GPS OPERATOR: OWEN MCKEE

PREPARED BY: PFS Petroleum Field Services, LLC 1801 W. 13th Ave Denver, CO 80204	FIELD DATE: 08-28-11	SURFACE LOCATION: SW 1/4 SW 1/4, SEC. 34, T3N, R66W, 6TH P.M.
	DRAWING DATE: 08-29-11	BY: SMF

