

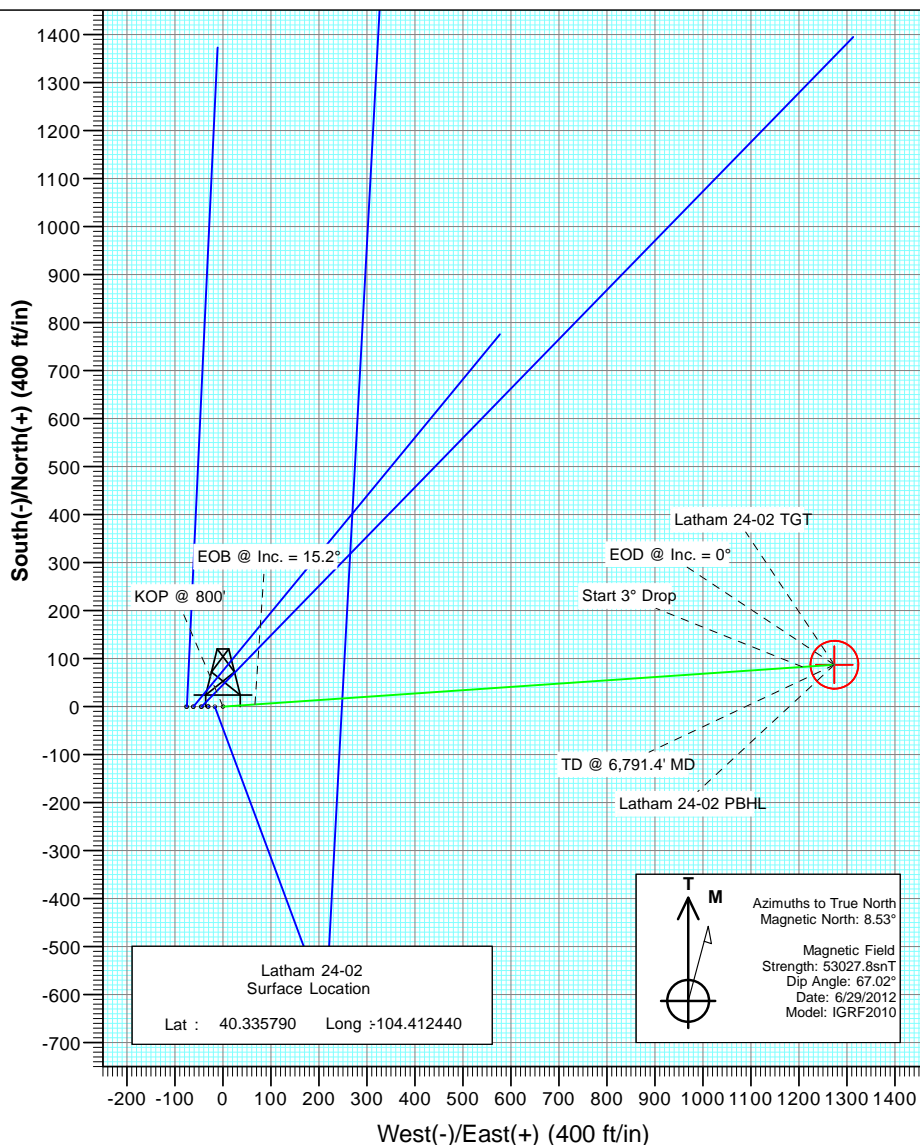
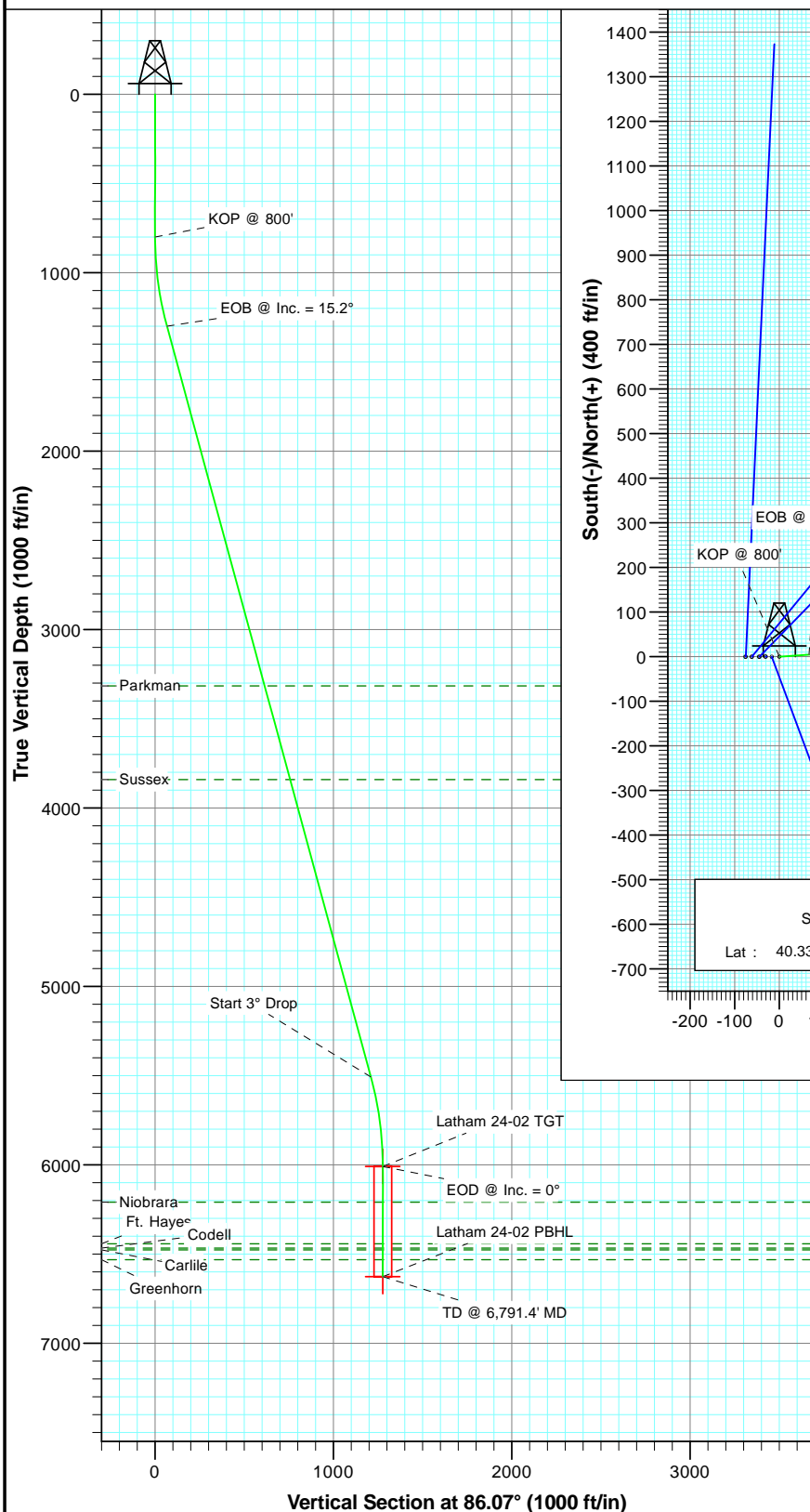


Project: Weld County
 Site: Latham 14-02 Pad
 Well: Latham 24-02
 Wellbore: DD
 Plan: Plan #1



SECTION DETAILS

Sec	MD	Inc	Azi	TVD	+N/-S	+E/-W	Dleg	TFace	VSec	Target
1	0.0	0.00	0.00	0.0	0.0	0.0	0.00	0.00	0.0	
2	800.0	0.00	0.00	800.0	0.0	0.0	0.00	0.00	0.0	
3	1306.8	15.20	86.07	1300.8	4.6	66.7	3.00	86.07	66.8	
4	5666.7	15.20	86.07	5508.2	82.9	1207.3	0.00	0.00	1210.2	
5	6173.4	0.00	0.00	6009.0	87.5	1274.0	3.00	180.00	1277.0	Latham 24-02 TGT
6	6791.4	0.00	0.00	6627.0	87.5	1274.0	0.00	0.00	1277.0	Latham 24-02 PBHL



FORMATION TOP DETAILS

TVDPath	MDPath	Formation
3316.0	3395.0	Parkman
3841.0	3939.0	Sussex
6209.0	6373.4	Niobrara
6443.0	6607.4	Ft. Hayes
6467.0	6631.4	Codell
6477.0	6641.4	Carlile
6532.0	6696.4	Greenhorn

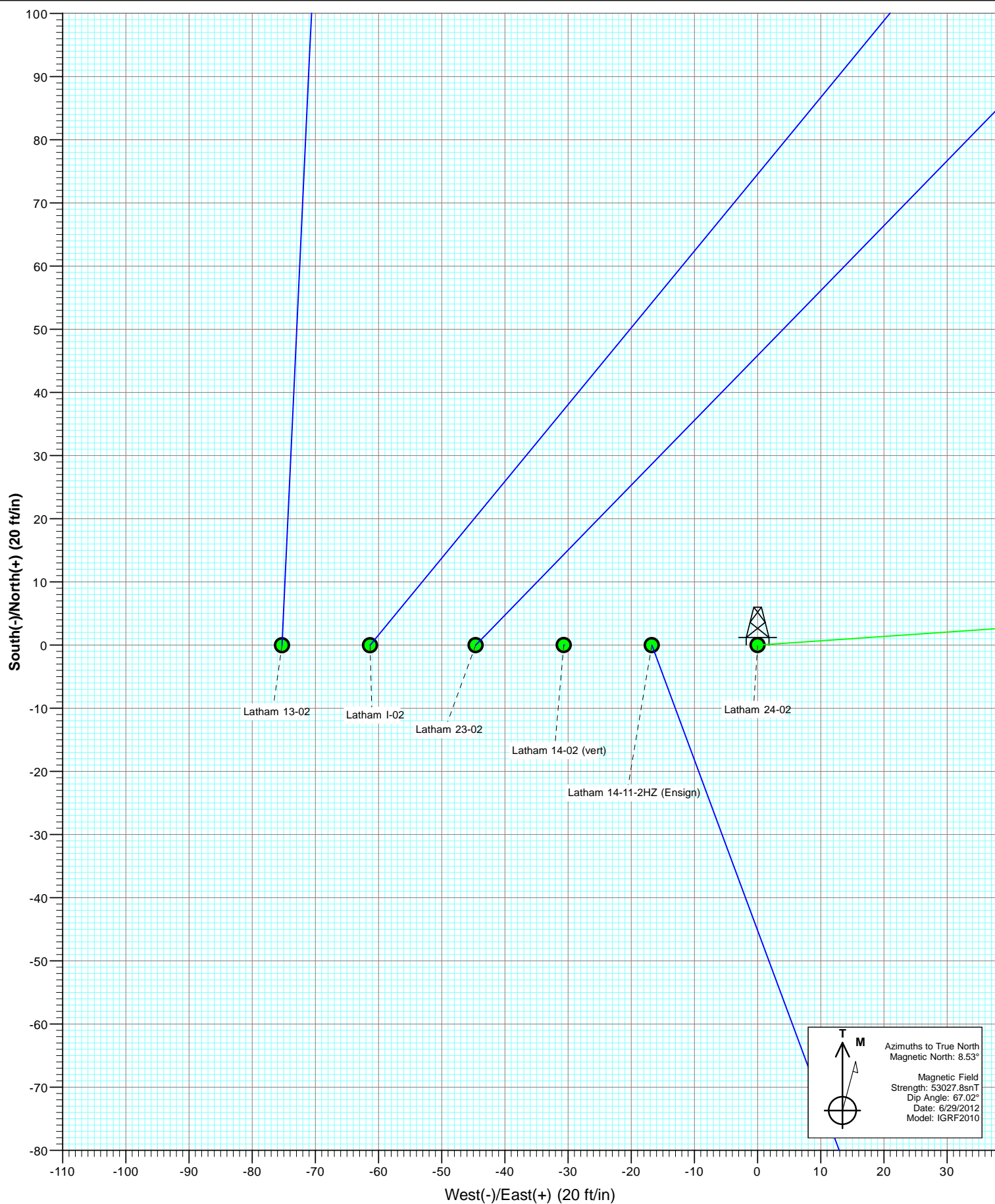
Plan #1
 Latham 24-02
 125XXX; SC

KB=12' @ 4551.0ft (Original Well Elev)
 North American Datum 1983
 Well Latham 24-02, True North

Type	Target	TD	No Target (Freehand)	Azimuth	Origin	Type	N/S	E/W	From	TVD
				86.07	Slot		0.0	0.0		0.0
Name		TVD		+N/-S	+E/-W	Latitude			Longitude	
Latham 24-02 TGT		6009.0		87.5	1274.0	40.336030			-104.407870	
Latham 24-02 PBHL		6627.0		87.5	1274.0	40.336030			-104.407870	

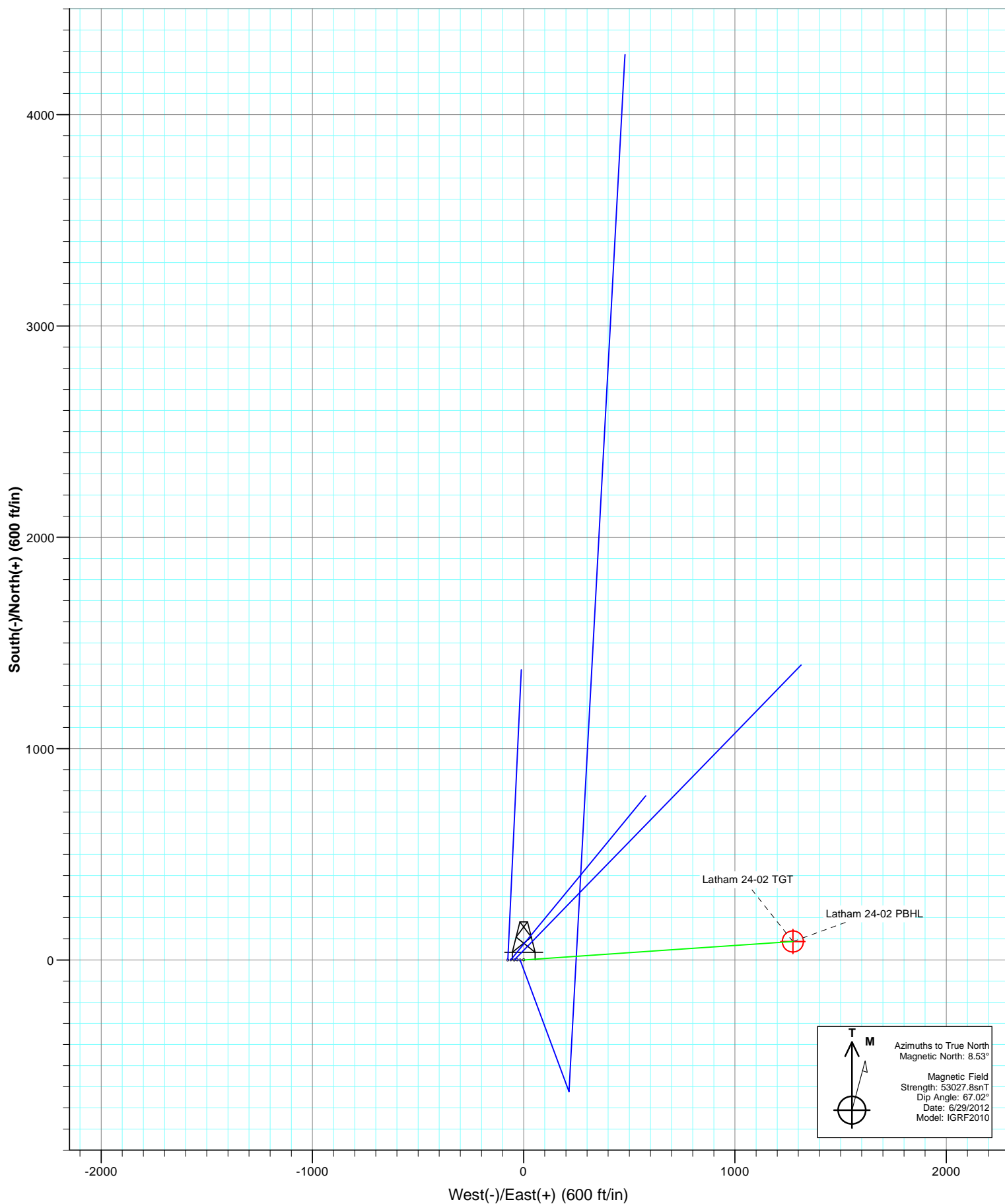


Project: Weld County
Site: Latham 14-02 Pad
Well: Latham 24-02
Wellbore: DD
Plan: Plan #1



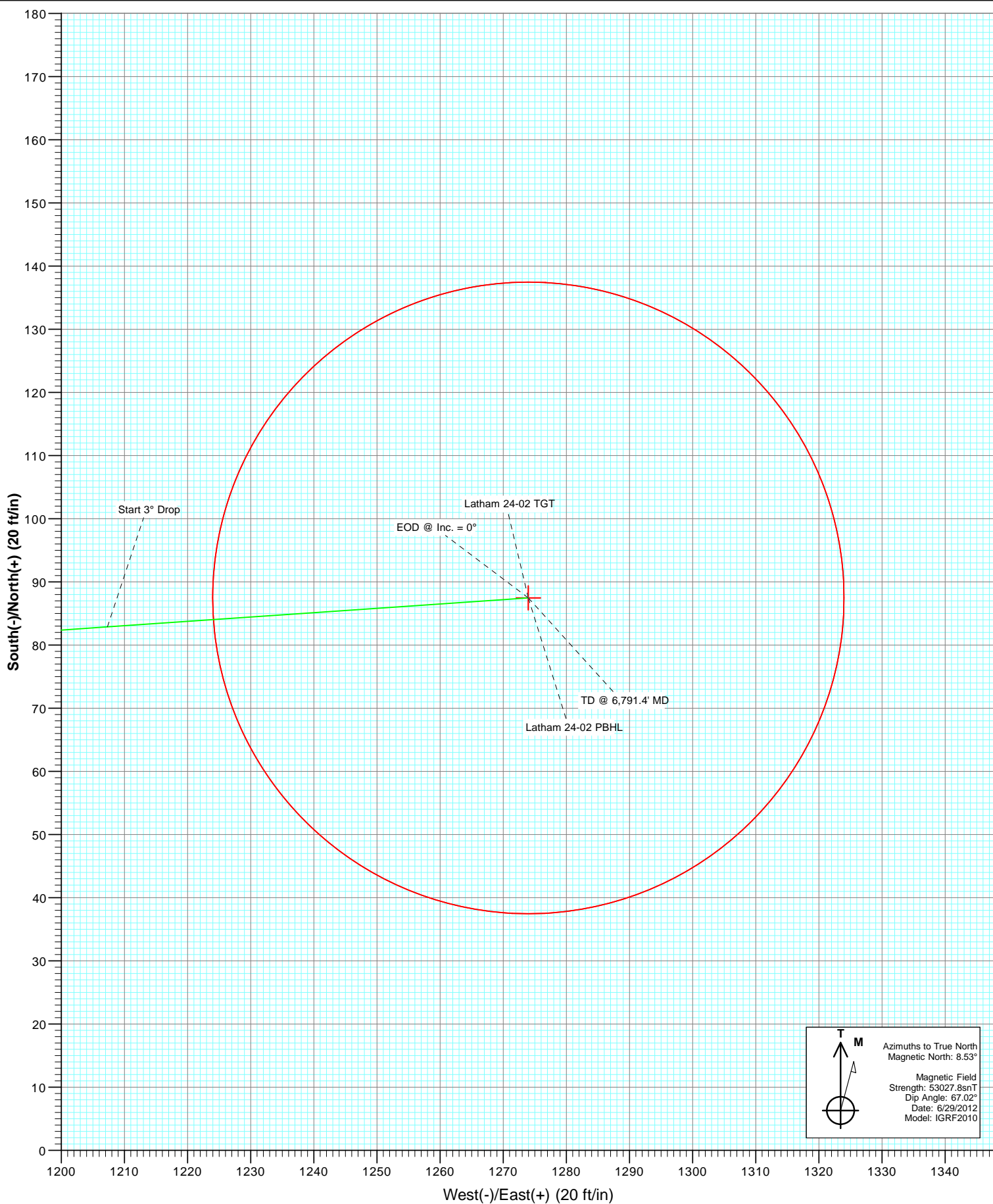


Project: Weld County
Site: Latham 14-02 Pad
Well: Latham 24-02
Wellbore: DD
Plan: Plan #1





Project: Weld County
Site: Latham 14-02 Pad
Well: Latham 24-02
Wellbore: DD
Plan: Plan #1



Cathedral Energy Services

Planning Report

Database:	USA EDM 5000 Multi Users DB	Local Co-ordinate Reference:	Well Latham 24-02
Company:	Bonanza Creek Energy Operating Company, LLC	TVD Reference:	KB=12' @ 4551.0ft (Original Well Elev)
Project:	Weld County	MD Reference:	KB=12' @ 4551.0ft (Original Well Elev)
Site:	Latham 14-02 Pad	North Reference:	True
Well:	Latham 24-02	Survey Calculation Method:	Minimum Curvature
Wellbore:	DD		
Design:	Plan #1		

Project	Weld County		
Map System:	US State Plane 1983	System Datum:	Mean Sea Level
Geo Datum:	North American Datum 1983		
Map Zone:	Colorado Northern Zone		

Site		Latham 14-02 Pad			
Site Position:		Northing:	1,367,030.59 ft	Latitude:	40.335790
From:	Lat/Long	Easting:	3,303,151.95 ft	Longitude:	-104.412550
Position Uncertainty:	0.0 ft	Slot Radius:	13.200 in	Grid Convergence:	0.70 °

Well	Latham 24-02					
Well Position	+N/-S	0.0 ft	Northing:	1,367,030.96 ft	Latitude:	40.335790
	+E/-W	0.0 ft	Easting:	3,303,182.61 ft	Longitude:	-104.412440
Position Uncertainty		0.0 ft	Wellhead Elevation:	ft	Ground Level:	4,539.0 ft

Wellbore	DD				
Magnetics	Model Name	Sample Date	Declination	Dip Angle	Field Strength
			(°)	(°)	(nT)
	IGRF2010	6/29/2012	8.53	67.02	53,028

Design	Plan #1			
Audit Notes:				
Version:	Phase:	PLAN	Tie On Depth:	0.0
Vertical Section:	Depth From (TVD)	+N/-S	+E/-W	Direction
	(ft)	(ft)	(ft)	(°)
	0.0	0.0	0.0	86.07

Plan Sections										
Measured	Inclination	Azimuth	Vertical	+N/-S	+E/-W	Dogleg	Build	Turn	TFO	Target
Depth	(°)	(°)	Depth	(ft)	(ft)	Rate	Rate	Rate	(°)	
(ft)			(ft)			(°/100ft)	(°/100ft)	(°/100ft)		
0.0	0.00	0.00	0.0	0.0	0.0	0.00	0.00	0.00	0.00	
800.0	0.00	0.00	800.0	0.0	0.0	0.00	0.00	0.00	0.00	
1,306.8	15.20	86.07	1,300.8	4.6	66.7	3.00	3.00	0.00	86.07	
5,666.7	15.20	86.07	5,508.2	82.9	1,207.3	0.00	0.00	0.00	0.00	
6,173.4	0.00	0.00	6,009.0	87.5	1,274.0	3.00	-3.00	0.00	180.00	Latham 24-02 TGT
6,791.4	0.00	0.00	6,627.0	87.5	1,274.0	0.00	0.00	0.00	0.00	Latham 24-02 PBHL

Cathedral Energy Services

Planning Report

Database:	USA EDM 5000 Multi Users DB	Local Co-ordinate Reference:	Well Latham 24-02
Company:	Bonanza Creek Energy Operating Company, LLC	TVD Reference:	KB=12' @ 4551.0ft (Original Well Elev)
Project:	Weld County	MD Reference:	KB=12' @ 4551.0ft (Original Well Elev)
Site:	Latham 14-02 Pad	North Reference:	True
Well:	Latham 24-02	Survey Calculation Method:	Minimum Curvature
Wellbore:	DD		
Design:	Plan #1		

Planned Survey

Measured Depth (ft)	Inclination (°)	Azimuth (°)	Vertical Depth (ft)	+N/-S (ft)	+E/-W (ft)	Vertical Section (ft)	Dogleg Rate (°/100ft)	Build Rate (°/100ft)	Comments / Formations
0.0	0.00	0.00	0.0	0.0	0.0	0.0	0.00	0.00	
100.0	0.00	0.00	100.0	0.0	0.0	0.0	0.00	0.00	
200.0	0.00	0.00	200.0	0.0	0.0	0.0	0.00	0.00	
300.0	0.00	0.00	300.0	0.0	0.0	0.0	0.00	0.00	
400.0	0.00	0.00	400.0	0.0	0.0	0.0	0.00	0.00	
500.0	0.00	0.00	500.0	0.0	0.0	0.0	0.00	0.00	
600.0	0.00	0.00	600.0	0.0	0.0	0.0	0.00	0.00	
700.0	0.00	0.00	700.0	0.0	0.0	0.0	0.00	0.00	
800.0	0.00	0.00	800.0	0.0	0.0	0.0	0.00	0.00	KOP @ 800'
900.0	3.00	86.07	900.0	0.2	2.6	2.6	3.00	3.00	
1,000.0	6.00	86.07	999.6	0.7	10.4	10.5	3.00	3.00	
1,100.0	9.00	86.07	1,098.8	1.6	23.5	23.5	3.00	3.00	
1,200.0	12.00	86.07	1,197.1	2.9	41.6	41.7	3.00	3.00	
1,306.8	15.20	86.07	1,300.8	4.6	66.7	66.8	3.00	3.00	EOB @ Inc. = 15.2°
1,400.0	15.20	86.07	1,390.8	6.3	91.1	91.3	0.00	0.00	
1,500.0	15.20	86.07	1,487.3	8.0	117.2	117.5	0.00	0.00	
1,600.0	15.20	86.07	1,583.8	9.8	143.4	143.7	0.00	0.00	
1,700.0	15.20	86.07	1,680.3	11.6	169.6	170.0	0.00	0.00	
1,800.0	15.20	86.07	1,776.8	13.4	195.7	196.2	0.00	0.00	
1,900.0	15.20	86.07	1,873.3	15.2	221.9	222.4	0.00	0.00	
2,000.0	15.20	86.07	1,969.8	17.0	248.0	248.6	0.00	0.00	
2,100.0	15.20	86.07	2,066.3	18.8	274.2	274.9	0.00	0.00	
2,200.0	15.20	86.07	2,162.8	20.6	300.4	301.1	0.00	0.00	
2,300.0	15.20	86.07	2,259.3	22.4	326.5	327.3	0.00	0.00	
2,400.0	15.20	86.07	2,355.8	24.2	352.7	353.5	0.00	0.00	
2,500.0	15.20	86.07	2,452.3	26.0	378.9	379.7	0.00	0.00	
2,600.0	15.20	86.07	2,548.8	27.8	405.0	406.0	0.00	0.00	
2,700.0	15.20	86.07	2,645.3	29.6	431.2	432.2	0.00	0.00	
2,800.0	15.20	86.07	2,741.8	31.4	457.3	458.4	0.00	0.00	
2,900.0	15.20	86.07	2,838.3	33.2	483.5	484.6	0.00	0.00	
3,000.0	15.20	86.07	2,934.8	35.0	509.7	510.9	0.00	0.00	
3,100.0	15.20	86.07	3,031.3	36.8	535.8	537.1	0.00	0.00	
3,200.0	15.20	86.07	3,127.8	38.6	562.0	563.3	0.00	0.00	
3,300.0	15.20	86.07	3,224.3	40.4	588.1	589.5	0.00	0.00	
3,395.0	15.20	86.07	3,316.0	42.1	613.0	614.4	0.00	0.00	Parkman
3,400.0	15.20	86.07	3,320.8	42.2	614.3	615.8	0.00	0.00	
3,500.0	15.20	86.07	3,417.3	44.0	640.5	642.0	0.00	0.00	
3,600.0	15.20	86.07	3,513.8	45.8	666.6	668.2	0.00	0.00	
3,700.0	15.20	86.07	3,610.3	47.6	692.8	694.4	0.00	0.00	
3,800.0	15.20	86.07	3,706.8	49.4	719.0	720.7	0.00	0.00	
3,900.0	15.20	86.07	3,803.3	51.2	745.1	746.9	0.00	0.00	
3,939.0	15.20	86.07	3,841.0	51.9	755.3	757.1	0.00	0.00	Sussex
4,000.0	15.20	86.07	3,899.8	53.0	771.3	773.1	0.00	0.00	
4,100.0	15.20	86.07	3,996.3	54.8	797.4	799.3	0.00	0.00	
4,200.0	15.20	86.07	4,092.8	56.5	823.6	825.5	0.00	0.00	
4,300.0	15.20	86.07	4,189.3	58.3	849.8	851.8	0.00	0.00	
4,400.0	15.20	86.07	4,285.8	60.1	875.9	878.0	0.00	0.00	
4,500.0	15.20	86.07	4,382.3	61.9	902.1	904.2	0.00	0.00	
4,600.0	15.20	86.07	4,478.8	63.7	928.3	930.4	0.00	0.00	
4,700.0	15.20	86.07	4,575.3	65.5	954.4	956.7	0.00	0.00	
4,800.0	15.20	86.07	4,671.8	67.3	980.6	982.9	0.00	0.00	
4,900.0	15.20	86.07	4,768.3	69.1	1,006.7	1,009.1	0.00	0.00	

Cathedral Energy Services

Planning Report

Database:	USA EDM 5000 Multi Users DB	Local Co-ordinate Reference:	Well Latham 24-02
Company:	Bonanza Creek Energy Operating Company, LLC	TVD Reference:	KB=12' @ 4551.0ft (Original Well Elev)
Project:	Weld County	MD Reference:	KB=12' @ 4551.0ft (Original Well Elev)
Site:	Latham 14-02 Pad	North Reference:	True
Well:	Latham 24-02	Survey Calculation Method:	Minimum Curvature
Wellbore:	DD		
Design:	Plan #1		

Planned Survey

Measured Depth (ft)	Inclination (°)	Azimuth (°)	Vertical Depth (ft)	+N/-S (ft)	+E/-W (ft)	Vertical Section (ft)	Dogleg Rate (°/100ft)	Build Rate (°/100ft)	Comments / Formations
5,000.0	15.20	86.07	4,864.8	70.9	1,032.9	1,035.3	0.00	0.00	
5,100.0	15.20	86.07	4,961.3	72.7	1,059.1	1,061.6	0.00	0.00	
5,200.0	15.20	86.07	5,057.8	74.5	1,085.2	1,087.8	0.00	0.00	
5,300.0	15.20	86.07	5,154.3	76.3	1,111.4	1,114.0	0.00	0.00	
5,400.0	15.20	86.07	5,250.8	78.1	1,137.5	1,140.2	0.00	0.00	
5,500.0	15.20	86.07	5,347.3	79.9	1,163.7	1,166.5	0.00	0.00	
5,600.0	15.20	86.07	5,443.8	81.7	1,189.9	1,192.7	0.00	0.00	
5,666.7	15.20	86.07	5,508.2	82.9	1,207.3	1,210.2	0.00	0.00	Start 3° Drop
5,700.0	14.20	86.07	5,540.4	83.5	1,215.8	1,218.6	3.00	-3.00	
5,800.0	11.20	86.07	5,637.9	85.0	1,237.7	1,240.6	3.00	-3.00	
5,900.0	8.20	86.07	5,736.5	86.1	1,254.5	1,257.5	3.00	-3.00	
6,000.0	5.20	86.07	5,835.8	86.9	1,266.1	1,269.1	3.00	-3.00	
6,100.0	2.20	86.07	5,935.6	87.4	1,272.6	1,275.6	3.00	-3.00	
6,173.4	0.00	0.00	6,009.0	87.5	1,274.0	1,277.0	3.00	-3.00	EOD @ Inc. = 0°
6,200.0	0.00	0.00	6,035.6	87.5	1,274.0	1,277.0	0.00	0.00	
6,300.0	0.00	0.00	6,135.6	87.5	1,274.0	1,277.0	0.00	0.00	
6,373.4	0.00	0.00	6,209.0	87.5	1,274.0	1,277.0	0.00	0.00	Niobrara
6,400.0	0.00	0.00	6,235.6	87.5	1,274.0	1,277.0	0.00	0.00	
6,500.0	0.00	0.00	6,335.6	87.5	1,274.0	1,277.0	0.00	0.00	
6,600.0	0.00	0.00	6,435.6	87.5	1,274.0	1,277.0	0.00	0.00	
6,607.4	0.00	0.00	6,443.0	87.5	1,274.0	1,277.0	0.00	0.00	Ft. Hayes
6,631.4	0.00	0.00	6,467.0	87.5	1,274.0	1,277.0	0.00	0.00	Codell
6,641.4	0.00	0.00	6,477.0	87.5	1,274.0	1,277.0	0.00	0.00	Carlile
6,696.4	0.00	0.00	6,532.0	87.5	1,274.0	1,277.0	0.00	0.00	Greenhorn
6,700.0	0.00	0.00	6,535.6	87.5	1,274.0	1,277.0	0.00	0.00	
6,791.4	0.00	0.00	6,627.0	87.5	1,274.0	1,277.0	0.00	0.00	TD @ 6,791.4' MD

Targets

Target Name	Dip Angle (°)	Dip Dir. (°)	TVD (ft)	+N/-S (ft)	+E/-W (ft)	Northing (ft)	Easting (ft)	Latitude	Longitude
- hit/miss target									
- Shape									
Latham 24-02 PBHL	0.00	0.00	6,627.0	87.5	1,274.0	1,367,134.05	3,304,455.44	40.336030	-104.407870
- plan hits target center									
- Circle (radius 50.0)									
Latham 24-02 TGT	0.00	0.00	6,009.0	87.5	1,274.0	1,367,134.05	3,304,455.44	40.336030	-104.407870
- plan hits target center									
- Point									

Cathedral Energy Services

Planning Report

Database:	USA EDM 5000 Multi Users DB	Local Co-ordinate Reference:	Well Latham 24-02
Company:	Bonanza Creek Energy Operating Company, LLC	TVD Reference:	KB=12' @ 4551.0ft (Original Well Elev)
Project:	Weld County	MD Reference:	KB=12' @ 4551.0ft (Original Well Elev)
Site:	Latham 14-02 Pad	North Reference:	True
Well:	Latham 24-02	Survey Calculation Method:	Minimum Curvature
Wellbore:	DD		
Design:	Plan #1		

Formations						
Measured Depth (ft)	Vertical Depth (ft)	Name	Lithology	Dip (°)	Dip Direction (°)	
3,395.0	3,316.0	Parkman				
3,939.0	3,841.0	Sussex				
6,373.4	6,209.0	Niobrara				
6,607.4	6,443.0	Ft. Hayes				
6,631.4	6,467.0	Codell				
6,641.4	6,477.0	Carlile				
6,696.4	6,532.0	Greenhorn				

Plan Annotations					
Measured Depth (ft)	Vertical Depth (ft)	Local Coordinates			
		+N/-S (ft)	+E/-W (ft)	Comment	
800.0	800.0	0.0	0.0	KOP @ 800'	
1,306.8	1,300.8	4.6	66.7	EOB @ Inc. = 15.2°	
5,666.7	5,508.2	82.9	1,207.3	Start 3° Drop	
6,173.4	6,009.0	87.5	1,274.0	EOD @ Inc. = 0°	
6,791.4	6,627.0	87.5	1,274.0	TD @ 6,791.4' MD	

Bonanza Creek Energy Operating Company, LLC

**Weld County
Latham 14-02 Pad
Latham 24-02
DD
Plan #1**

Anticollision Report

29 June, 2012

Cathedral Energy Services

Anticollision Report

Company:	Bonanza Creek Energy Operating Company, LLC	Local Co-ordinate Reference:	Well Latham 24-02
Project:	Weld County	TVD Reference:	KB=12' @ 4551.0ft (Original Well Elev)
Reference Site:	Latham 14-02 Pad	MD Reference:	KB=12' @ 4551.0ft (Original Well Elev)
Site Error:	0.0ft	North Reference:	True
Reference Well:	Latham 24-02	Survey Calculation Method:	Minimum Curvature
Well Error:	0.0ft	Output errors are at	2.00 sigma
Reference Wellbore	DD	Database:	USA EDM 5000 Multi Users DB
Reference Design:	Plan #1	Offset TVD Reference:	Offset Datum

Reference	Plan #1		
Filter type:	GLOBAL FILTER APPLIED: All wellpaths within 200'+ 100/1000 of reference		
Interpolation Method:	MD Interval 100.0ft	Error Model:	Systematic Ellipse
Depth Range:	Unlimited	Scan Method:	Closest Approach 3D
Results Limited by:	Maximum center-center distance of 500.0ft	Error Surface:	Elliptical Conic
Warning Levels Evaluated at:	2.00 Sigma		

Survey Tool Program		Date	6/29/2012		
From (ft)	To (ft)	Survey (Wellbore)	Tool Name	Description	
0.0	6,791.4	Plan #1 (DD)	MWD	Geolink MWD	

Summary						
Site Name	Reference Measured Depth (ft)	Offset Measured Depth (ft)	Distance Between Centres (ft)	Between Ellipses (ft)	Separation Factor	Warning
Offset Well - Wellbore - Design						
Latham 14-02 Pad						
Latham 13-02 - DD - Plan #1	0.0	0.0	75.3			
Latham 13-02 - DD - Plan #1	800.0	800.0	75.3	75.3	10,000.000	CC, ES
Latham 14-02 (vert) - VH - Plan #1	0.0	0.0	30.7			
Latham 14-02 (vert) - VH - Plan #1	800.0	800.0	30.7	30.7	10,000.000	CC, ES
Latham 14-11-2HZ (Ensign) - HZ - Plan #3	0.0	3.0	16.7			
Latham 14-11-2HZ (Ensign) - HZ - Plan #3	329.3	332.4	15.7	15.7	10,000.000	CC, ES
Latham 23-02 - DD - Plan #1	0.0	0.0	44.6			
Latham 23-02 - DD - Plan #1	700.0	700.0	44.6	44.6	10,000.000	CC, ES
Latham I-02 - DD - Plan #1	0.0	0.0	61.3			
Latham I-02 - DD - Plan #1	800.0	800.0	61.3	61.3	10,000.000	CC, ES

Cathedral Energy Services

Anticollision Report

Company:	Bonanza Creek Energy Operating Company, LLC	Local Co-ordinate Reference:	Well Latham 24-02
Project:	Weld County	TVD Reference:	KB=12' @ 4551.0ft (Original Well Elev)
Reference Site:	Latham 14-02 Pad	MD Reference:	KB=12' @ 4551.0ft (Original Well Elev)
Site Error:	0.0ft	North Reference:	True
Reference Well:	Latham 24-02	Survey Calculation Method:	Minimum Curvature
Well Error:	0.0ft	Output errors are at	2.00 sigma
Reference Wellbore	DD	Database:	USA EDM 5000 Multi Users DB
Reference Design:	Plan #1	Offset TVD Reference:	Offset Datum

Offset Design Latham 14-02 Pad - Latham 13-02 - DD - Plan #1													Offset Site Error:	0.0 ft
Survey Program: 0-MWD													Offset Well Error:	0.0 ft
Reference		Offset		Semi Major Axis			Distance				Total	Separation	Warning	
Measured Depth (ft)	Vertical Depth (ft)	Measured Depth (ft)	Vertical Depth (ft)	Reference (ft)	Offset (ft)	Highside Toolface (°)	Offset Wellbore Centre +N/-S (ft)	+E/-W (ft)	Between Centres (ft)	Between Ellipses (ft)	Uncertainty Axis	Factor		
0.0	0.0	0.0	0.0	0.0	0.0	-90.02	0.0	-75.3	75.3					
100.0	100.0	100.0	100.0	0.2	0.2	-90.02	0.0	-75.3	75.3	75.3	0.00	N/A		
200.0	200.0	200.0	200.0	0.3	0.3	-90.02	0.0	-75.3	75.3	75.3	0.00	N/A		
300.0	300.0	300.0	300.0	0.5	0.5	-90.02	0.0	-75.3	75.3	75.3	0.00	N/A		
400.0	400.0	400.0	400.0	0.7	0.7	-90.02	0.0	-75.3	75.3	75.3	0.00	N/A		
500.0	500.0	500.0	500.0	0.9	0.9	-90.02	0.0	-75.3	75.3	75.3	0.00	N/A		
600.0	600.0	600.0	600.0	1.0	1.0	-90.02	0.0	-75.3	75.3	75.3	0.00	N/A		
700.0	700.0	700.0	700.0	1.2	1.2	-90.02	0.0	-75.3	75.3	75.3	0.00	N/A		
800.0	800.0	800.0	800.0	1.4	1.4	-90.02	0.0	-75.3	75.3	75.3	0.00	N/A CC, ES		
900.0	900.0	900.1	900.0	1.6	1.6	-174.28	2.6	-75.1	77.8	77.8	0.00	N/A		
1,000.0	999.6	999.4	999.0	1.7	1.7	-169.55	10.4	-74.8	85.8	85.8	0.00	N/A		
1,100.0	1,098.8	1,097.3	1,096.1	2.0	2.0	-163.43	23.1	-74.2	100.0	100.0	0.00	N/A		
1,200.0	1,197.1	1,193.2	1,190.4	2.3	2.2	-157.36	40.3	-73.4	121.1	121.1	0.00	N/A		
1,300.0	1,294.3	1,286.4	1,281.1	2.6	2.6	-152.08	61.5	-72.4	149.3	149.3	0.00	N/A		
1,400.0	1,390.8	1,378.1	1,369.4	3.1	3.0	-147.90	86.5	-71.2	182.3	182.3	0.00	N/A		
1,500.0	1,487.3	1,471.5	1,459.0	3.5	3.4	-144.71	112.9	-70.0	216.5	216.5	0.00	N/A		
1,600.0	1,583.8	1,564.9	1,548.6	3.9	3.8	-142.38	139.3	-68.8	251.0	251.0	0.00	N/A		
1,700.0	1,680.3	1,658.3	1,638.2	4.4	4.3	-140.62	165.7	-67.5	285.9	285.9	0.00	N/A		
1,800.0	1,776.8	1,751.7	1,727.7	4.9	4.7	-139.23	192.1	-66.3	320.9	320.9	0.00	N/A		
1,900.0	1,873.3	1,845.2	1,817.3	5.4	5.2	-138.12	218.5	-65.1	356.1	356.1	0.00	N/A		
2,000.0	1,969.8	1,938.6	1,906.9	5.8	5.6	-137.21	244.9	-63.8	391.4	391.4	0.00	N/A		
2,100.0	2,066.3	2,032.0	1,996.5	6.3	6.1	-136.45	271.3	-62.6	426.7	426.7	0.00	N/A		
2,200.0	2,162.8	2,125.4	2,086.1	6.8	6.6	-135.80	297.8	-61.4	462.1	462.1	0.00	N/A		
2,300.0	2,259.3	2,218.8	2,175.7	7.3	7.0	-135.25	324.2	-60.1	497.5	497.5	0.00	N/A		

Cathedral Energy Services

Anticollision Report

Company:	Bonanza Creek Energy Operating Company, LLC	Local Co-ordinate Reference:	Well Latham 24-02
Project:	Weld County	TVD Reference:	KB=12' @ 4551.0ft (Original Well Elev)
Reference Site:	Latham 14-02 Pad	MD Reference:	KB=12' @ 4551.0ft (Original Well Elev)
Site Error:	0.0ft	North Reference:	True
Reference Well:	Latham 24-02	Survey Calculation Method:	Minimum Curvature
Well Error:	0.0ft	Output errors are at	2.00 sigma
Reference Wellbore	DD	Database:	USA EDM 5000 Multi Users DB
Reference Design:	Plan #1	Offset TVD Reference:	Offset Datum

Offset Design Latham 14-02 Pad - Latham 14-02 (vert) - VH - Plan #1													Offset Site Error:	0.0 ft
Survey Program: 0-MWD													Offset Well Error:	0.0 ft
Reference		Offset		Semi Major Axis			Distance				Total	Separation	Warning	
Measured Depth (ft)	Vertical Depth (ft)	Measured Depth (ft)	Vertical Depth (ft)	Reference (ft)	Offset (ft)	Highside Toolface (°)	Offset Wellbore Centre +N/-S (ft)	+E/-W (ft)	Between Centres (ft)	Between Ellipses (ft)	Uncertainty Axis	Factor		
0.0	0.0	0.0	0.0	0.0	0.0	-89.99	0.0	-30.7	30.7					
100.0	100.0	100.0	100.0	0.2	0.2	-89.99	0.0	-30.7	30.7	30.7	0.00	N/A		
200.0	200.0	200.0	200.0	0.3	0.3	-89.99	0.0	-30.7	30.7	30.7	0.00	N/A		
300.0	300.0	300.0	300.0	0.5	0.5	-89.99	0.0	-30.7	30.7	30.7	0.00	N/A		
400.0	400.0	400.0	400.0	0.7	0.7	-89.99	0.0	-30.7	30.7	30.7	0.00	N/A		
500.0	500.0	500.0	500.0	0.9	0.9	-89.99	0.0	-30.7	30.7	30.7	0.00	N/A		
600.0	600.0	600.0	600.0	1.0	1.0	-89.99	0.0	-30.7	30.7	30.7	0.00	N/A		
700.0	700.0	700.0	700.0	1.2	1.2	-89.99	0.0	-30.7	30.7	30.7	0.00	N/A		
800.0	800.0	800.0	800.0	1.4	1.4	-89.99	0.0	-30.7	30.7	30.7	0.00	N/A CC, ES		
900.0	900.0	900.0	900.0	1.6	1.5	-176.37	0.0	-30.7	33.3	33.3	0.00	N/A		
1,000.0	999.6	999.6	999.6	1.7	1.7	-177.05	0.0	-30.7	41.1	41.1	0.00	N/A		
1,100.0	1,098.8	1,098.8	1,098.8	2.0	1.9	-177.74	0.0	-30.7	54.1	54.1	0.00	N/A		
1,200.0	1,197.1	1,197.1	1,197.1	2.3	2.1	-178.30	0.0	-30.7	72.4	72.4	0.00	N/A		
1,300.0	1,294.3	1,294.3	1,294.3	2.6	2.2	-178.70	0.0	-30.7	95.7	95.7	0.00	N/A		
1,400.0	1,390.8	1,390.8	1,390.8	3.1	2.4	-178.97	0.0	-30.7	121.9	121.9	0.00	N/A		
1,500.0	1,487.3	1,487.3	1,487.3	3.5	2.6	-179.16	0.0	-30.7	148.1	148.1	0.00	N/A		
1,600.0	1,583.8	1,583.8	1,583.8	3.9	2.7	-179.28	0.0	-30.7	174.3	174.3	0.00	N/A		
1,700.0	1,680.3	1,680.3	1,680.3	4.4	2.9	-179.38	0.0	-30.7	200.6	200.6	0.00	N/A		
1,800.0	1,776.8	1,776.8	1,776.8	4.9	3.1	-179.45	0.0	-30.7	226.8	226.8	0.00	N/A		
1,900.0	1,873.3	1,873.3	1,873.3	5.4	3.2	-179.51	0.0	-30.7	253.0	253.0	0.00	N/A		
2,000.0	1,969.8	1,969.8	1,969.8	5.8	3.4	-179.55	0.0	-30.7	279.2	279.2	0.00	N/A		
2,100.0	2,066.3	2,066.3	2,066.3	6.3	3.6	-179.59	0.0	-30.7	305.5	305.5	0.00	N/A		
2,200.0	2,162.8	2,162.8	2,162.8	6.8	3.8	-179.62	0.0	-30.7	331.7	331.7	0.00	N/A		
2,300.0	2,259.3	2,259.3	2,259.3	7.3	3.9	-179.65	0.0	-30.7	357.9	357.9	0.00	N/A		
2,400.0	2,355.8	2,355.8	2,355.8	7.8	4.1	-179.67	0.0	-30.7	384.1	384.1	0.00	N/A		
2,500.0	2,452.3	2,452.3	2,452.3	8.3	4.3	-179.70	0.0	-30.7	410.3	410.3	0.00	N/A		
2,600.0	2,548.8	2,548.8	2,548.8	8.8	4.4	-179.71	0.0	-30.7	436.6	436.6	0.00	N/A		
2,700.0	2,645.3	2,645.3	2,645.3	9.3	4.6	-179.73	0.0	-30.7	462.8	462.8	0.00	N/A		
2,800.0	2,741.8	2,741.8	2,741.8	9.8	4.8	-179.74	0.0	-30.7	489.0	489.0	0.00	N/A		

Cathedral Energy Services

Anticollision Report

Company:	Bonanza Creek Energy Operating Company, LLC	Local Co-ordinate Reference:	Well Latham 24-02
Project:	Weld County	TVD Reference:	KB=12' @ 4551.0ft (Original Well Elev)
Reference Site:	Latham 14-02 Pad	MD Reference:	KB=12' @ 4551.0ft (Original Well Elev)
Site Error:	0.0ft	North Reference:	True
Reference Well:	Latham 24-02	Survey Calculation Method:	Minimum Curvature
Well Error:	0.0ft	Output errors are at	2.00 sigma
Reference Wellbore	DD	Database:	USA EDM 5000 Multi Users DB
Reference Design:	Plan #1	Offset TVD Reference:	Offset Datum

Offset Design Latham 14-02 Pad - Latham 14-11-2HZ (Ensign) - HZ - Plan #3												Offset Site Error: 0.0 ft			
Survey Program: 0-MWD														Offset Well Error: 0.0 ft	
Reference		Offset		Semi Major Axis			Distance								
Measured Depth (ft)	Vertical Depth (ft)	Measured Depth (ft)	Vertical Depth (ft)	Reference (ft)	Offset (ft)	Highside Toolface (°)	Offset Wellbore Centre +N/-S (ft)	+E/-W (ft)	Between Centres (ft)	Between Ellipses (ft)	Total Uncertainty Axis	Separation Factor	Warning		
0.0	0.0	3.0	3.0	0.0	0.0	-90.01	0.0	-16.7	16.7						
100.0	100.0	103.0	103.0	0.2	0.2	-90.01	0.0	-16.7	16.7	16.7	0.00	N/A			
200.0	200.0	203.1	203.1	0.3	0.3	-91.61	-0.5	-16.6	16.6	16.6	0.00	N/A			
300.0	300.0	303.2	303.1	0.5	0.5	-104.10	-3.8	-15.3	15.8	15.8	0.00	N/A			
329.3	329.3	332.4	332.3	0.6	0.6	-110.34	-5.5	-14.7	15.7	15.7	0.00	N/A	CC, ES		
400.0	400.0	402.9	402.5	0.7	0.7	-129.16	-10.5	-12.8	16.6	16.6	0.00	N/A			
500.0	500.0	501.9	501.0	0.9	1.0	-155.53	-20.3	-9.2	22.3	22.3	0.00	N/A			
600.0	600.0	600.4	598.6	1.0	1.3	-172.30	-33.1	-4.5	33.7	33.7	0.00	N/A			
700.0	700.0	699.3	696.4	1.2	1.6	179.22	-46.9	0.6	47.3	47.3	0.00	N/A			
800.0	800.0	798.2	794.2	1.4	1.9	174.58	-60.6	5.7	61.5	61.5	0.00	N/A			
900.0	900.0	897.1	892.0	1.6	2.2	87.18	-74.4	10.9	75.9	75.9	0.00	N/A			
1,000.0	999.6	996.0	989.8	1.7	2.5	89.50	-88.2	16.0	90.0	90.0	0.00	N/A			
1,100.0	1,098.8	1,094.6	1,087.3	2.0	2.8	93.94	-102.0	21.1	104.6	104.6	0.00	N/A			
1,200.0	1,197.1	1,192.6	1,184.2	2.3	3.1	99.58	-115.6	26.1	120.5	120.5	0.00	N/A			
1,300.0	1,294.3	1,289.7	1,280.2	2.6	3.4	105.76	-129.2	31.2	138.9	138.9	0.00	N/A			
1,400.0	1,390.8	1,386.3	1,375.7	3.1	3.7	111.83	-142.6	36.1	159.7	159.7	0.00	N/A			
1,500.0	1,487.3	1,482.8	1,471.2	3.5	4.0	116.52	-156.1	41.1	181.9	181.9	0.00	N/A			
1,600.0	1,583.8	1,579.3	1,566.6	3.9	4.3	120.19	-169.5	46.1	205.1	205.1	0.00	N/A			
1,700.0	1,680.3	1,675.9	1,662.1	4.4	4.6	123.11	-183.0	51.1	228.8	228.8	0.00	N/A			
1,800.0	1,776.8	1,772.4	1,757.5	4.9	4.9	125.49	-196.4	56.1	253.1	253.1	0.00	N/A			
1,900.0	1,873.3	1,868.9	1,853.0	5.4	5.2	127.45	-209.9	61.1	277.6	277.6	0.00	N/A			
2,000.0	1,969.8	1,965.4	1,948.4	5.8	5.5	129.09	-223.4	66.1	302.5	302.5	0.00	N/A			
2,100.0	2,066.3	2,062.0	2,043.9	6.3	5.8	130.48	-236.8	71.1	327.5	327.5	0.00	N/A			
2,200.0	2,162.8	2,158.5	2,139.4	6.8	6.1	131.68	-250.3	76.0	352.7	352.7	0.00	N/A			
2,300.0	2,259.3	2,255.0	2,234.8	7.3	6.4	132.72	-263.7	81.0	378.0	378.0	0.00	N/A			
2,400.0	2,355.8	2,351.6	2,330.3	7.8	6.7	133.62	-277.2	86.0	403.4	403.4	0.00	N/A			
2,500.0	2,452.3	2,448.1	2,425.7	8.3	7.0	134.42	-290.6	91.0	428.9	428.9	0.00	N/A			
2,600.0	2,548.8	2,544.6	2,521.2	8.8	7.3	135.13	-304.1	96.0	454.5	454.5	0.00	N/A			
2,700.0	2,645.3	2,641.2	2,616.6	9.3	7.6	135.77	-317.5	101.0	480.2	480.2	0.00	N/A			

Cathedral Energy Services

Anticollision Report

Company:	Bonanza Creek Energy Operating Company, LLC	Local Co-ordinate Reference:	Well Latham 24-02
Project:	Weld County	TVD Reference:	KB=12' @ 4551.0ft (Original Well Elev)
Reference Site:	Latham 14-02 Pad	MD Reference:	KB=12' @ 4551.0ft (Original Well Elev)
Site Error:	0.0ft	North Reference:	True
Reference Well:	Latham 24-02	Survey Calculation Method:	Minimum Curvature
Well Error:	0.0ft	Output errors are at	2.00 sigma
Reference Wellbore	DD	Database:	USA EDM 5000 Multi Users DB
Reference Design:	Plan #1	Offset TVD Reference:	Offset Datum

Offset Design Latham 14-02 Pad - Latham 23-02 - DD - Plan #1													Offset Site Error:	0.0 ft
Survey Program: 0-MWD													Offset Well Error:	0.0 ft
Reference		Offset		Semi Major Axis			Distance						Warning	
Measured Depth (ft)	Vertical Depth (ft)	Measured Depth (ft)	Vertical Depth (ft)	Reference (ft)	Offset (ft)	Highside Toolface (°)	Offset Wellbore Centre +N/-S (ft)	+E/-W (ft)	Between Centres (ft)	Between Ellipses (ft)	Total Uncertainty Axis	Separation Factor		
0.0	0.0	0.0	0.0	0.0	0.0	-90.01	0.0	-44.6	44.6					
100.0	100.0	100.0	100.0	0.2	0.2	-90.01	0.0	-44.6	44.6	44.6	0.00	N/A		
200.0	200.0	200.0	200.0	0.3	0.3	-90.01	0.0	-44.6	44.6	44.6	0.00	N/A		
300.0	300.0	300.0	300.0	0.5	0.5	-90.01	0.0	-44.6	44.6	44.6	0.00	N/A		
400.0	400.0	400.0	400.0	0.7	0.7	-90.01	0.0	-44.6	44.6	44.6	0.00	N/A		
500.0	500.0	500.0	500.0	0.9	0.9	-90.01	0.0	-44.6	44.6	44.6	0.00	N/A		
600.0	600.0	600.0	600.0	1.0	1.0	-90.01	0.0	-44.6	44.6	44.6	0.00	N/A		
700.0	700.0	700.0	700.0	1.2	1.2	-90.01	0.0	-44.6	44.6	44.6	0.00	N/A CC, ES		
800.0	800.0	800.0	800.0	1.4	1.4	-90.01	0.0	-44.6	44.6	44.6	0.00	N/A		
900.0	900.0	901.6	901.6	1.6	1.6	-173.86	1.9	-42.7	45.4	45.4	0.00	N/A		
1,000.0	999.6	1,003.0	1,002.6	1.7	1.8	-167.71	7.7	-37.1	48.1	48.1	0.00	N/A		
1,100.0	1,098.8	1,104.0	1,102.7	2.0	2.0	-159.05	17.3	-27.8	53.7	53.7	0.00	N/A		
1,200.0	1,197.1	1,204.3	1,201.3	2.3	2.3	-149.82	30.5	-14.9	63.1	63.1	0.00	N/A		
1,300.0	1,294.3	1,303.8	1,298.0	2.6	2.7	-141.51	47.3	1.5	76.7	76.7	0.00	N/A		
1,400.0	1,390.8	1,402.3	1,392.4	3.1	3.1	-134.05	67.5	21.1	93.0	93.0	0.00	N/A		
1,500.0	1,487.3	1,499.7	1,484.2	3.5	3.6	-126.32	90.8	43.8	110.7	110.7	0.00	N/A		
1,600.0	1,583.8	1,595.5	1,572.7	3.9	4.3	-118.72	117.0	69.3	130.8	130.8	0.00	N/A		
1,700.0	1,680.3	1,691.7	1,660.6	4.4	4.9	-112.26	144.9	96.4	153.3	153.3	0.00	N/A		
1,800.0	1,776.8	1,787.8	1,748.6	4.9	5.6	-107.47	172.8	123.5	177.2	177.2	0.00	N/A		
1,900.0	1,873.3	1,884.0	1,836.5	5.4	6.3	-103.82	200.6	150.6	202.0	202.0	0.00	N/A		
2,000.0	1,969.8	1,980.1	1,924.5	5.8	7.0	-100.96	228.5	177.7	227.4	227.4	0.00	N/A		
2,100.0	2,066.3	2,076.3	2,012.4	6.3	7.7	-98.68	256.4	204.9	253.3	253.3	0.00	N/A		
2,200.0	2,162.8	2,172.4	2,100.3	6.8	8.4	-96.82	284.3	232.0	279.4	279.4	0.00	N/A		
2,300.0	2,259.3	2,268.6	2,188.3	7.3	9.1	-95.28	312.1	259.1	305.8	305.8	0.00	N/A		
2,400.0	2,355.8	2,364.7	2,276.2	7.8	9.8	-93.98	340.0	286.2	332.4	332.4	0.00	N/A		
2,500.0	2,452.3	2,460.9	2,364.2	8.3	10.5	-92.87	367.9	313.3	359.1	359.1	0.00	N/A		
2,600.0	2,548.8	2,557.1	2,452.1	8.8	11.2	-91.92	395.8	340.5	385.9	385.9	0.00	N/A		
2,700.0	2,645.3	2,653.2	2,540.0	9.3	11.9	-91.09	423.6	367.6	412.8	412.8	0.00	N/A		
2,800.0	2,741.8	2,749.4	2,628.0	9.8	12.7	-90.36	451.5	394.7	439.7	439.7	0.00	N/A		
2,900.0	2,838.3	2,845.5	2,715.9	10.3	13.4	-89.72	479.4	421.8	466.8	466.8	0.00	N/A		
3,000.0	2,934.8	2,941.7	2,803.9	10.8	14.1	-89.14	507.3	448.9	493.8	493.8	0.00	N/A		

Cathedral Energy Services

Anticollision Report

Company:	Bonanza Creek Energy Operating Company, LLC	Local Co-ordinate Reference:	Well Latham 24-02
Project:	Weld County	TVD Reference:	KB=12' @ 4551.0ft (Original Well Elev)
Reference Site:	Latham 14-02 Pad	MD Reference:	KB=12' @ 4551.0ft (Original Well Elev)
Site Error:	0.0ft	North Reference:	True
Reference Well:	Latham 24-02	Survey Calculation Method:	Minimum Curvature
Well Error:	0.0ft	Output errors are at	2.00 sigma
Reference Wellbore	DD	Database:	USA EDM 5000 Multi Users DB
Reference Design:	Plan #1	Offset TVD Reference:	Offset Datum

Offset Design Latham 14-02 Pad - Latham I-02 - DD - Plan #1													Offset Site Error:	0.0 ft
Survey Program: 0-MWD													Offset Well Error:	0.0 ft
Reference		Offset		Semi Major Axis			Distance						Warning	
Measured Depth (ft)	Vertical Depth (ft)	Measured Depth (ft)	Vertical Depth (ft)	Reference (ft)	Offset (ft)	Highside Toolface (°)	Offset Wellbore Centre +N/-S (ft)	+E/-W (ft)	Between Centres (ft)	Between Ellipses (ft)	Total Uncertainty Axis	Separation Factor		
0.0	0.0	0.0	0.0	0.0	0.0	-90.02	0.0	-61.3	61.3					
100.0	100.0	100.0	100.0	0.2	0.2	-90.02	0.0	-61.3	61.3	61.3	0.00	N/A		
200.0	200.0	200.0	200.0	0.3	0.3	-90.02	0.0	-61.3	61.3	61.3	0.00	N/A		
300.0	300.0	300.0	300.0	0.5	0.5	-90.02	0.0	-61.3	61.3	61.3	0.00	N/A		
400.0	400.0	400.0	400.0	0.7	0.7	-90.02	0.0	-61.3	61.3	61.3	0.00	N/A		
500.0	500.0	500.0	500.0	0.9	0.9	-90.02	0.0	-61.3	61.3	61.3	0.00	N/A		
600.0	600.0	600.0	600.0	1.0	1.0	-90.02	0.0	-61.3	61.3	61.3	0.00	N/A		
700.0	700.0	700.0	700.0	1.2	1.2	-90.02	0.0	-61.3	61.3	61.3	0.00	N/A		
800.0	800.0	800.0	800.0	1.4	1.4	-90.02	0.0	-61.3	61.3	61.3	0.00	N/A	CC, ES	
900.0	900.0	902.0	902.0	1.6	1.6	-174.32	2.1	-59.6	62.3	62.3	0.00	N/A		
1,000.0	999.6	1,003.8	1,003.4	1.7	1.8	-169.35	8.4	-54.4	65.4	65.4	0.00	N/A		
1,100.0	1,098.8	1,105.0	1,103.7	2.0	2.0	-162.18	18.7	-45.9	71.6	71.6	0.00	N/A		
1,200.0	1,197.1	1,205.3	1,202.3	2.3	2.3	-154.20	33.0	-34.1	81.7	81.7	0.00	N/A		
1,300.0	1,294.3	1,303.7	1,298.6	2.6	2.6	-148.47	48.6	-21.4	97.0	97.0	0.00	N/A		
1,400.0	1,390.8	1,401.9	1,394.7	3.1	2.9	-145.31	64.0	-8.6	115.3	115.3	0.00	N/A		
1,500.0	1,487.3	1,500.0	1,490.8	3.5	3.3	-143.04	79.5	4.1	133.9	133.9	0.00	N/A		
1,600.0	1,583.8	1,598.2	1,586.9	3.9	3.6	-141.33	95.0	16.9	152.6	152.6	0.00	N/A		
1,700.0	1,680.3	1,696.3	1,682.9	4.4	4.0	-139.99	110.5	29.6	171.4	171.4	0.00	N/A		
1,800.0	1,776.8	1,794.5	1,779.0	4.9	4.4	-138.91	126.0	42.3	190.3	190.3	0.00	N/A		
1,900.0	1,873.3	1,892.6	1,875.1	5.4	4.7	-138.03	141.5	55.1	209.2	209.2	0.00	N/A		
2,000.0	1,969.8	1,990.8	1,971.2	5.8	5.1	-137.29	157.0	67.8	228.2	228.2	0.00	N/A		
2,100.0	2,066.3	2,088.9	2,067.2	6.3	5.5	-136.67	172.4	80.5	247.2	247.2	0.00	N/A		
2,200.0	2,162.8	2,187.0	2,163.3	6.8	5.9	-136.14	187.9	93.3	266.2	266.2	0.00	N/A		
2,300.0	2,259.3	2,285.2	2,259.4	7.3	6.2	-135.68	203.4	106.0	285.3	285.3	0.00	N/A		
2,400.0	2,355.8	2,383.3	2,355.5	7.8	6.6	-135.27	218.9	118.8	304.3	304.3	0.00	N/A		
2,500.0	2,452.3	2,481.5	2,451.5	8.3	7.0	-134.92	234.4	131.5	323.4	323.4	0.00	N/A		
2,600.0	2,548.8	2,579.6	2,547.6	8.8	7.4	-134.60	249.9	144.2	342.5	342.5	0.00	N/A		
2,700.0	2,645.3	2,677.8	2,643.7	9.3	7.8	-134.32	265.3	157.0	361.6	361.6	0.00	N/A		
2,800.0	2,741.8	2,775.9	2,739.8	9.8	8.2	-134.06	280.8	169.7	380.7	380.7	0.00	N/A		
2,900.0	2,838.3	2,874.1	2,835.8	10.3	8.5	-133.83	296.3	182.5	399.8	399.8	0.00	N/A		
3,000.0	2,934.8	2,972.2	2,931.9	10.8	8.9	-133.62	311.8	195.2	419.0	419.0	0.00	N/A		
3,100.0	3,031.3	3,070.3	3,028.0	11.3	9.3	-133.43	327.3	207.9	438.1	438.1	0.00	N/A		
3,200.0	3,127.8	3,168.5	3,124.0	11.8	9.7	-133.25	342.8	220.7	457.2	457.2	0.00	N/A		
3,300.0	3,224.3	3,266.6	3,220.1	12.3	10.1	-133.09	358.3	233.4	476.3	476.3	0.00	N/A		
3,400.0	3,320.8	3,364.8	3,316.2	12.8	10.5	-132.94	373.7	246.1	495.5	495.5	0.00	N/A		

Cathedral Energy Services

Anticollision Report

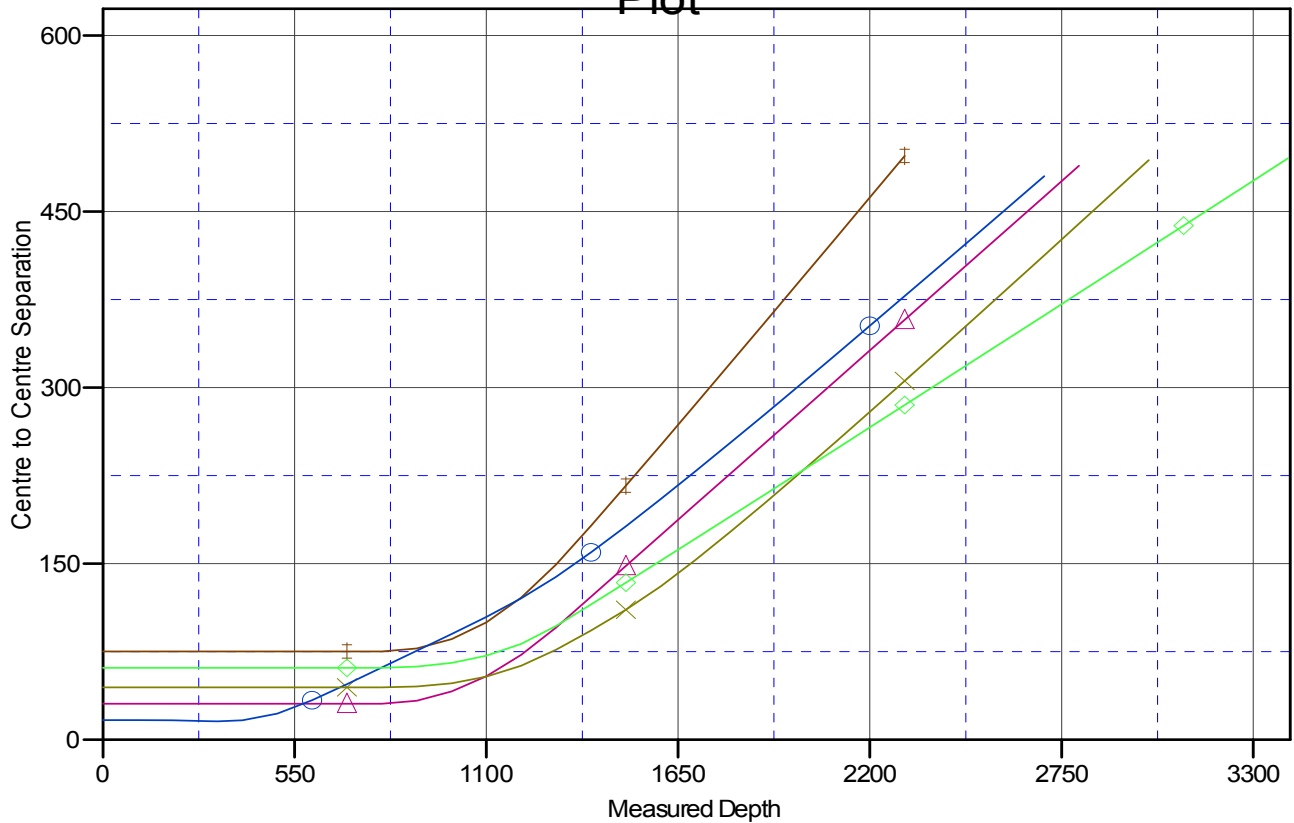
Company: Bonanza Creek Energy Operating Company, LLC
Project: Weld County
Reference Site: Latham 14-02 Pad
Site Error: 0.0ft
Reference Well: Latham 24-02
Well Error: 0.0ft
Reference Wellbore: DD
Reference Design: Plan #1

Local Co-ordinate Reference: Well Latham 24-02
TVD Reference: KB=12' @ 4551.0ft (Original Well Elev)
MD Reference: KB=12' @ 4551.0ft (Original Well Elev)
North Reference: True
Survey Calculation Method: Minimum Curvature
Output errors are at 2.00 sigma
Database: USA EDM 5000 Multi Users DB
Offset TVD Reference: Offset Datum

Reference Depths are relative to KB=12' @ 4551.0ft (Original Well Elev)
 Offset Depths are relative to Offset Datum
 Central Meridian is -105.500000 °

Coordinates are relative to: Latham 24-02
 Coordinate System is US State Plane 1983, Colorado Northern Zone
 Grid Convergence at Surface is: 0.70°

Ladder Plot



LEGEND

- x— Latham 13-02, DD, Plan #1 V0
- o— Latham 14-11-2HZ (Ensign), HZ, Plan #3 V0
- ◇— Latham I-02, DD, Plan #1 V0
- △— Latham 14-02 (vert), VH, Plan #1 V0
- x— Latham 23-02, DD, Plan #1 V0