



323-29

Surface Location: RWF 14-29 Pad

North American Datum 1983 , US State Plane 1983 , Colorado Central Zone

Ground Elevation: 5419.00

+N/-S

+E/-W

Northing

Easting

Latitude

Longitude

Slot

0.00

0.00

1612495.90

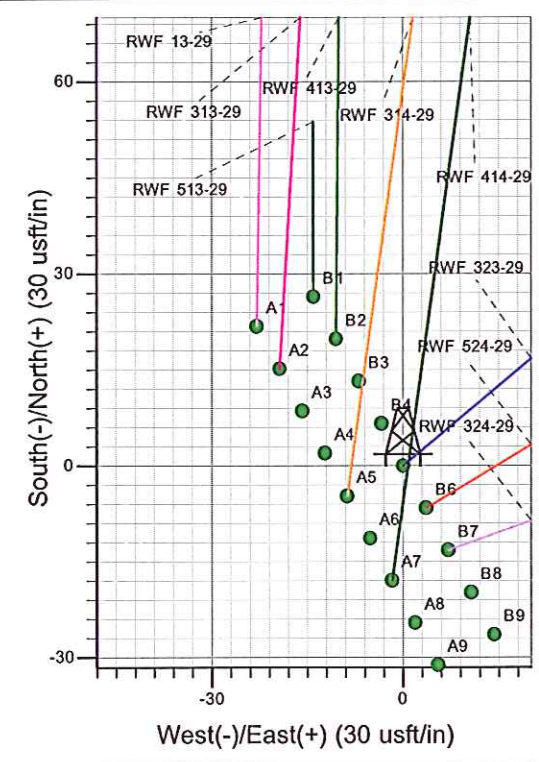
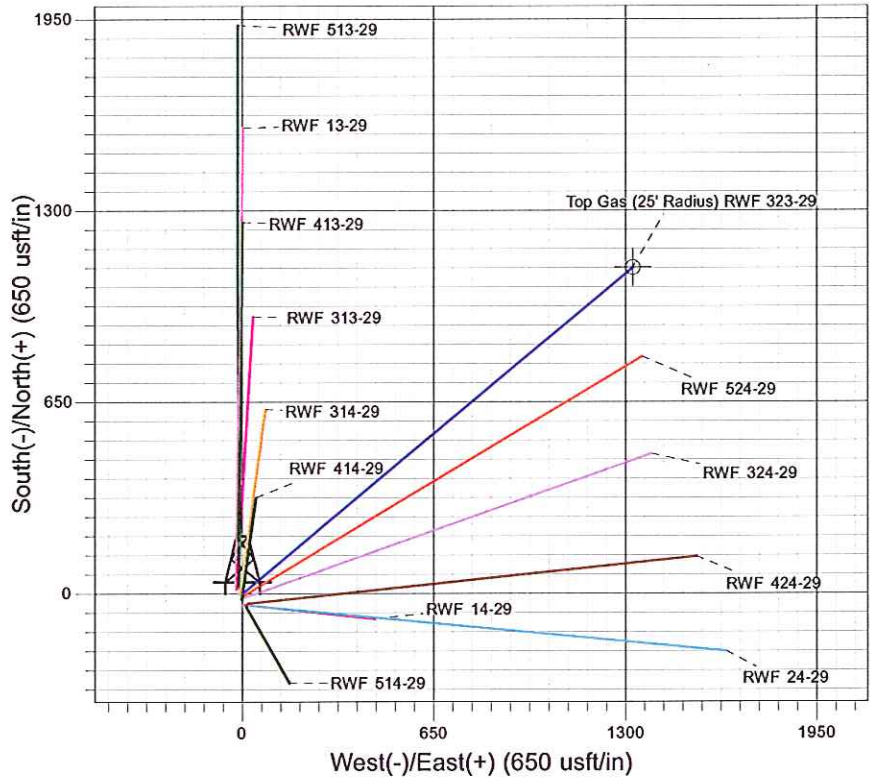
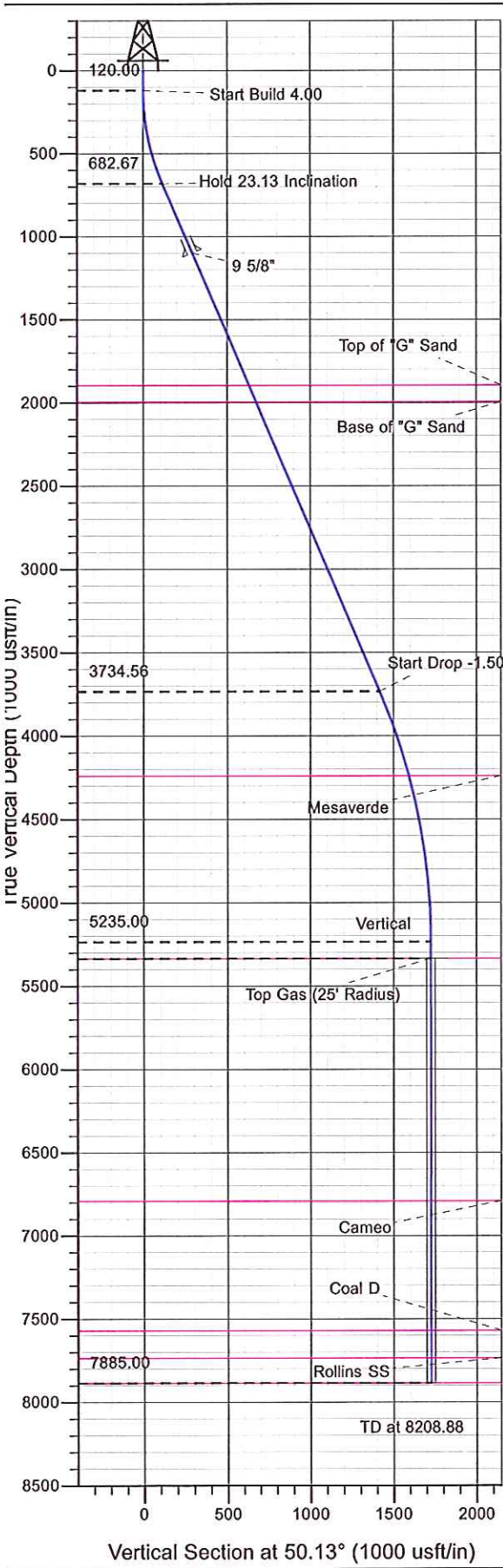
2317487.00

39.49013

-107.91862

B5

KELLY BUSHING @ 5445.00usft (SSD 576)



Project: RU 29-06S-094W  
Site: RWF 14-29 Pad  
Well: RWF 323-29  
Design #1 15Jun11 kjs

Azimuths to True North  
Magnetic North: 10.32°

Magnetic Field  
Strength: 52261.5snT  
Dip Angle: 65.75°  
Date: 6/15/2011  
Model: IGRF2010

ANNOTATIONS									
MD	Inc	Azi	TVD	+N/-S	+E/-W	VSect	Departure	Annotation	
120.00	0.00	0.00	120.00	0.00	0.00	0.00	0.00	Start Build 4.00	
698.24	23.13	50.13	682.67	73.81	88.37	115.14	115.14	Hold 23.13 Inclination	
4016.90	23.13	50.13	3734.56	909.52	1088.87	1418.76	1418.76	Start Drop -1.50	
5558.88	0.00	0.00	5235.00	1106.35	1324.52	1725.79	1725.79	Vertical	
5658.88	0.00	0.00	5335.00	1106.35	1324.52	1725.79	1725.79	Top Gas	
8208.88	0.00	0.00	7885.00	1106.35	1324.52	1725.79	1725.79	TD at 8208.88	



## **PICEANCE VLY NAD 83**

**RU 29-06S-094W**

**RWF 14-29 Pad**

**RWF 323-29 - Slot B5**

**Wellbore #1**

**Plan: Design #1 15Jun11 kjs**

## **Standard Planning Report - Geographic**

**17 April, 2012**





**WPX Energy**  
Planning Report - Geographic

<b>Database:</b>	COMPASS-PICEANCE	<b>Local Co-ordinate Reference:</b>	Well RWF 323-29 - Slot B5
<b>Company:</b>	PICEANCE VLY NAD 83	<b>TVD Reference:</b>	KELLY BUSHING @ 5445.00usft (SSD 576)
<b>Project:</b>	RU 29-06S-094W	<b>MD Reference:</b>	KELLY BUSHING @ 5445.00usft (SSD 576)
<b>Site:</b>	RWF 14-29 Pad	<b>North Reference:</b>	True
<b>Well:</b>	RWF 323-29	<b>Survey Calculation Method:</b>	Minimum Curvature
<b>Wellbore:</b>	Wellbore #1		
<b>Design:</b>	Design #1 15Jun11 kjs		

<b>Project</b>	RU 29-06S-094W, 29-06S-094W		
<b>Map System:</b>	US State Plane 1983	<b>System Datum:</b>	Mean Sea Level
<b>Geo Datum:</b>	North American Datum 1983		
<b>Map Zone:</b>	Colorado Central Zone		

Site		RWF 14-29 Pad			
Site Position:		Northing:	1,612,451.20 usft	Latitude:	39.49001
From:	Map	Easting:	2,317,498.20 usft	Longitude:	-107.91858
Position Uncertainty:	0.00 usft	Slot Radius:	13.200 in	Grid Convergence:	-1.53 °

Well	RWF 323-29 - Slot B5					
Well Position	+N/-S	0.00 usft	Northing:	1,612,495.90 usft	Latitude:	39.49013
	+E/-W	0.00 usft	Easting:	2,317,487.00 usft	Longitude:	-107.91863
Position Uncertainty		0.00 usft	Wellhead Elevation:		Ground Level:	5,419.00 usft

<b>Wellbore</b>	Wellbore #1				
<b>Magnetics</b>	<b>Model Name</b>	<b>Sample Date</b>	<b>Declination (°)</b>	<b>Dip Angle (°)</b>	<b>Field Strength (nT)</b>
	IGRF2010	6/15/2011	10.32	65.75	52,261

<b>Design</b>	Design #1 15Jun11 kjs			
<b>Audit Notes:</b>				
<b>Version:</b>	<b>Phase:</b>	PLAN	<b>Tie On Depth:</b>	0.00
<b>Vertical Section:</b>	<b>Depth From (TVD) (usft)</b>	<b>+N/-S (usft)</b>	<b>+E/-W (usft)</b>	<b>Direction (°)</b>
	0.00	0.00	0.00	50.13

<b>Plan Sections</b>										
Measured Depth (usft)	Inclination (°)	Azimuth (°)	Vertical Depth (usft)	+N/-S (usft)	+E/-W (usft)	Dogleg Rate (°/100usft)	Build Rate (°/100usft)	Turn Rate (°/100usft)	TFO (°)	Target
0.00	0.00	0.00	0.00	0.00	0.00	0.00	0.00	0.00	0.00	
120.00	0.00	0.00	120.00	0.00	0.00	0.00	0.00	0.00	0.00	
698.24	23.13	50.13	682.67	73.81	88.37	4.00	4.00	0.00	50.13	
4,016.90	23.13	50.13	3,734.56	909.52	1,088.87	0.00	0.00	0.00	0.00	
5,558.88	0.00	0.00	5,235.00	1,106.35	1,324.52	1.50	-1.50	0.00	180.00	
5,658.88	0.00	0.00	5,335.00	1,106.35	1,324.52	0.00	0.00	0.00	0.00	Top Gas (25' Radius)
8,208.88	0.00	0.00	7,885.00	1,106.35	1,324.52	0.00	0.00	0.00	0.00	



**WPX Energy**  
Planning Report - Geographic

<b>Database:</b>	COMPASS-PICEANCE	<b>Local Co-ordinate Reference:</b>	Well RWF 323-29 - Slot B5
<b>Company:</b>	PICEANCE VLY NAD 83	<b>TVD Reference:</b>	KELLY BUSHING @ 5445.00usft (SSD 576)
<b>Project:</b>	RU 29-06S-094W	<b>MD Reference:</b>	KELLY BUSHING @ 5445.00usft (SSD 576)
<b>Site:</b>	RWF 14-29 Pad	<b>North Reference:</b>	True
<b>Well:</b>	RWF 323-29	<b>Survey Calculation Method:</b>	Minimum Curvature
<b>Wellbore:</b>	Wellbore #1		
<b>Design:</b>	Design #1 15Jun11 kjs		

Planned Survey									
Measured Depth (usft)	Inclination (°)	Azimuth (°)	Vertical Depth (usft)	+N/-S (usft)	+E/-W (usft)	Map Northing (usft)	Map Easting (usft)	Latitude	Longitude
0.00	0.00	0.00	0.00	0.00	0.00	1,612,495.90	2,317,487.00	39.49013	-107.91863
120.00	0.00	0.00	120.00	0.00	0.00	1,612,495.90	2,317,487.00	39.49013	-107.91863
<b>Start Build 4.00</b>									
698.24	23.13	50.13	682.67	73.81	88.37	1,612,567.33	2,317,577.30	39.49034	-107.91831
<b>Hold 23.13 Inclination</b>									
1,152.06	23.13	50.13	1,100.00	188.09	225.18	1,612,677.93	2,317,717.11	39.49065	-107.91783
<b>9 5/8"</b>									
2,016.55	23.13	50.13	1,895.00	405.79	485.81	1,612,888.61	2,317,983.44	39.49125	-107.91691
<b>Top of "G" Sand</b>									
2,125.29	23.13	50.13	1,995.00	433.17	518.59	1,612,915.11	2,318,016.94	39.49132	-107.91679
<b>Base of "G" Sand</b>									
4,016.90	23.13	50.13	3,734.56	909.52	1,088.87	1,613,376.11	2,318,599.70	39.49263	-107.91477
<b>Start Drop -1.50</b>									
4,552.27	15.10	50.13	4,240.00	1,021.81	1,223.31	1,613,484.78	2,318,737.08	39.49294	-107.91429
<b>Mesaverde</b>									
5,558.88	0.00	0.00	5,235.00	1,106.35	1,324.52	1,613,566.60	2,318,840.50	39.49317	-107.91393
<b>Vertical</b>									
5,658.88	0.00	0.00	5,335.00	1,106.35	1,324.52	1,613,566.60	2,318,840.50	39.49317	-107.91393
<b>Top Gas - Approx. Top Gas</b>									
7,113.88	0.00	0.00	6,790.00	1,106.35	1,324.52	1,613,566.60	2,318,840.50	39.49317	-107.91393
<b>Cameo</b>									
7,893.88	0.00	0.00	7,570.00	1,106.35	1,324.52	1,613,566.60	2,318,840.50	39.49317	-107.91393
<b>Coal D</b>									
8,058.88	0.00	0.00	7,735.00	1,106.35	1,324.52	1,613,566.60	2,318,840.50	39.49317	-107.91393
<b>Rollins SS</b>									
8,208.88	0.00	0.00	7,885.00	1,106.35	1,324.52	1,613,566.60	2,318,840.50	39.49317	-107.91393
<b>TD at 8208.88 - TD</b>									

Design Targets									
Target Name - hit/miss target - Shape	Dip Angle (°)	Dip Dir. (°)	TVD (usft)	+N/-S (usft)	+E/-W (usft)	Northing (usft)	Easting (usft)	Latitude	Longitude
Top Gas (25' Radius) RI - plan hits target center - Circle (radius 25.00)	0.00	0.00	5,335.00	1,106.35	1,324.52	1,613,566.60	2,318,840.50	39.49317	-107.91393

Casing Points					
Measured Depth (usft)	Vertical Depth (usft)	Name	Casing Diameter (in)	Hole Diameter (in)	
1,152.06	1,100.00	9 5/8"	9.625	14.750	





**WPX Energy**  
Planning Report - Geographic

<b>Database:</b>	COMPASS-PICEANCE	<b>Local Co-ordinate Reference:</b>	Well RWF 323-29 - Slot B5
<b>Company:</b>	PICEANCE VLY NAD 83	<b>TVD Reference:</b>	KELLY BUSHING @ 5445.00usft (SSD 576)
<b>Project:</b>	RU 29-06S-094W	<b>MD Reference:</b>	KELLY BUSHING @ 5445.00usft (SSD 576)
<b>Site:</b>	RWF 14-29 Pad	<b>North Reference:</b>	True
<b>Well:</b>	RWF 323-29	<b>Survey Calculation Method:</b>	Minimum Curvature
<b>Wellbore:</b>	Wellbore #1		
<b>Design:</b>	Design #1 15Jun11 kjs		

Formations						
Measured Depth (usft)	Vertical Depth (usft)	Name	Lithology	Dip (°)	Dip Direction (°)	
2,016.55	1,895.00	Top of "G" Sand				
2,125.29	1,995.00	Base of "G" Sand				
4,552.27	4,240.00	Mesaverde				
5,658.88	5,335.00	Approx. Top Gas				
7,113.88	6,790.00	Cameo				
7,893.88	7,570.00	Coal D				
8,058.88	7,735.00	Rollins SS				
8,208.88	7,885.00	TD				

Plan Annotations					
Measured Depth (usft)	Vertical Depth (usft)	Local Coordinates			
		+N/-S (usft)	+E/-W (usft)	Comment	
120.00	120.00	0.00	0.00	Start Build 4.00	
698.24	682.67	73.81	88.37	Hold 23.13 Inclination	
4,016.90	3,734.56	909.52	1,088.87	Start Drop -1.50	
5,558.88	5,235.00	1,106.35	1,324.52	Vertical	
5,658.88	5,335.00	1,106.35	1,324.52	Top Gas	
8,208.88	7,885.00	1,106.35	1,324.52	TD at 8208.88	