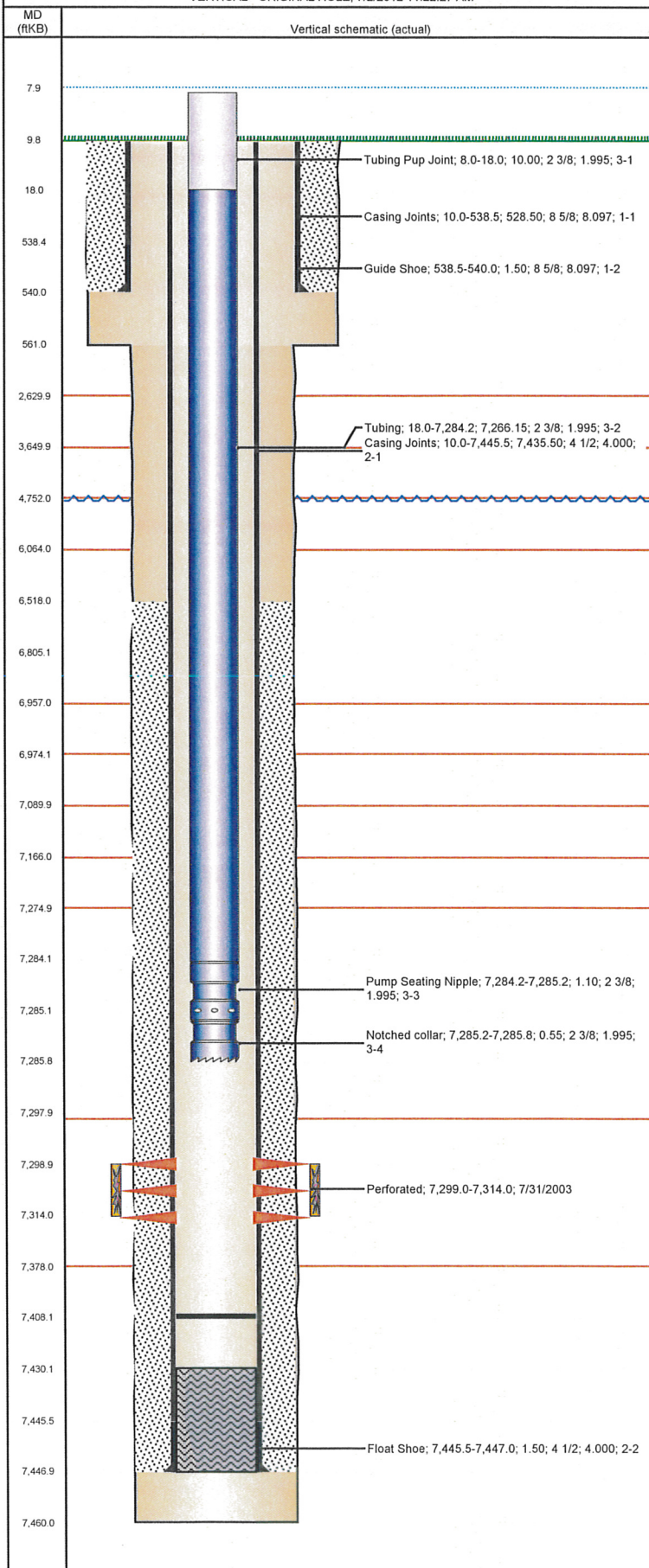


Well Name: STROH O02-08

VERTICAL - ORIGINAL HOLE, 7/2/2012 11:22:27 AM



Well Header

API	Business Unit	District	Well Config
05-123-21406	WATTENBERG	15	VERTICAL
Original KB Elevation (ft)	KB - GL / MSL (ftKB)	Spud Date	P & A Date
4,843.00	10.00	7/10/2003	
Comment			

Directions To Well

HWY 257 & WCR 52, S .5, E 0.4, S 0.4, E 0.3, S 0.3 E INTO

Current PBTD (ftKB)

ORIGINAL HOLE - 7,408.0

Surface Location (Congressional)

Quarter 1	Quarter 2	Quarter 3	Quarter 4	Section	Township	Twnshp N...	Range	Rng E/W Dir
		SE	NE	2	4	N	67	W

Bottom Hole Location

North-South Distance (ft)	From N or S Line	East-West Distance (ft)	From E or W Line

Plug Back Total Depths

Date	Depth (ftKB)	Method	Com
7/14/2003	7,430.0	CASING TALLY	GUIDE SHOE
7/30/2003	7,465.0	CASING TALLY	DEPTH-LOGGER/CBL

Wellbore Sections

Section Des	Size (in)	Act Top (ftKB)	Act Btm (ftKB)
SURFACE	12 1/4	10.0	561.0
PRODUCTION	7 7/8	561.0	7,460.0

Zone Statuses

Zone Name	Status Date	Status	Job
CODELL	8/7/2003	PR	DRILLING/COMPLETION - ORIGINAL, 7/10/2003 00:00
CODELL	2/25/2006	PR	RE-FRAC, 1/26/2006 00:00
CODELL	2/21/2012	PR	TRI-FRAC, 1/3/2012 06:00

Casing Strings

Csg Des	Run Date	OD (in)	Wt/Len (lb/ft)	Grade	Top (ftKB)	Set Depth (ftKB)
Surface	7/11/2003	8 5/8	24.00	K-55	10.0	540.0
Production	7/14/2003	4 1/2	11.60	M-80	10.0	7,447.0

Cement

Des	Top (ftKB)	Btm (ftKB)
SURFACE CASING CEMENT	10.0	540.0
PRODUCTION CASING CEMENT	6,518.0	7,447.0

Tubing Components

Item Des	OD (in)	Wt (lb/ft)	Grade	Jts	Len (ft)
Tubing Pup Joint	2 3/8	4.70	J-55	1	10.00
Tubing	2 3/8	4.70	J-55	222	7,266.15
Pump Seating Nipple	2 3/8	4.70	J-55	1	1.10
Notched collar	2 3/8	4.70	J-55	1	0.55

Perforation Data

Zone	Bnch/St g	Entered Shot Total	Top (ftKB)	Btm (ftKB)	Date
CODELL, ORIGINAL HOLE		60	7,299.0	7,314.0	7/31/2003

Stimulations & Treatments

Bnch/Stg	Date	Zone	Primary Job Type
	8/5/2003	CODELL, ORIGINAL HOLE	DRILLING/COMPLETION - ORIGINAL
Comment			

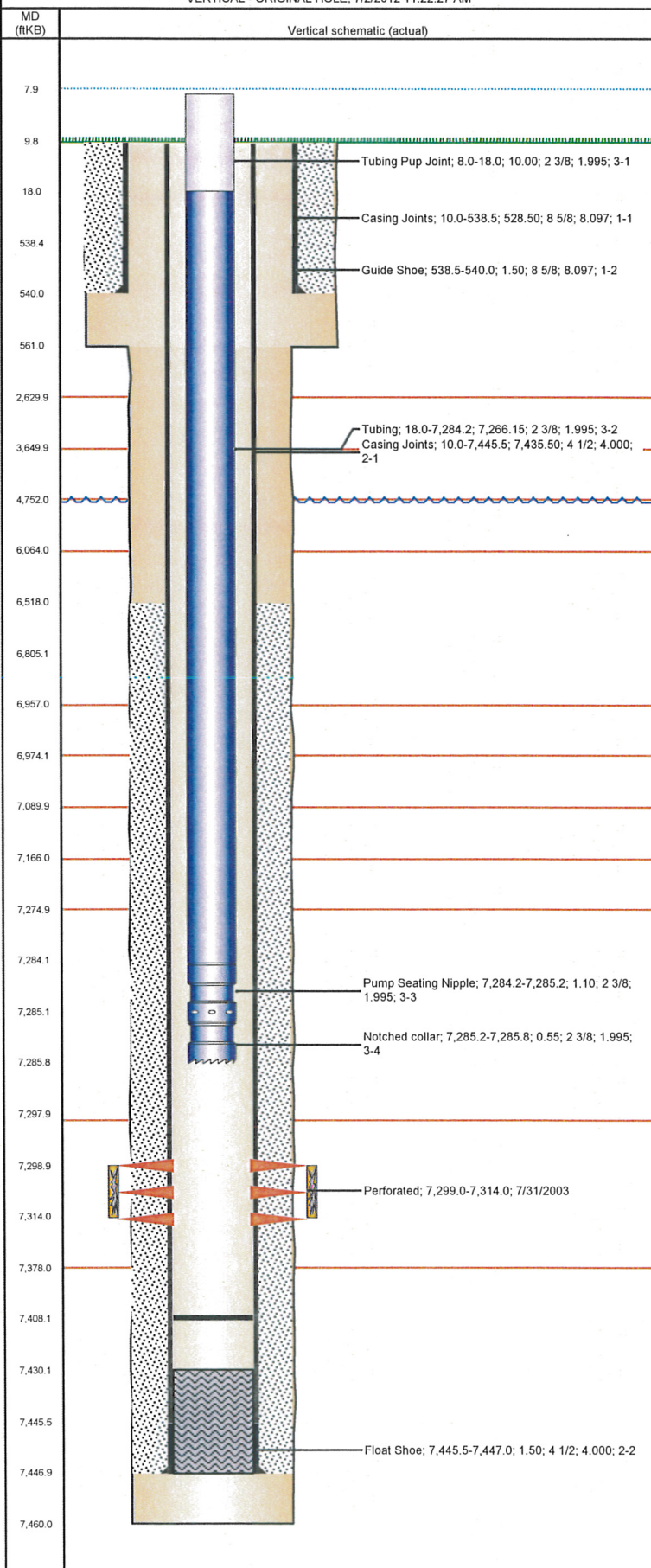
Total Add Amount	Total Clean Volume...	Vol Slurry Tot (gal)	Vol Gas Tot (MCF)
Proppant Ottawa 269700 lb		127470.00	
Avg Treat Pressure (psi)	Max Treat Pressure (psi)	Avg Treat Rate (bbl/min)	Max Treat Rate (bbl/min)
6,417.0	6,934.0	13.93	14.59

Bnch/Stg	Date	Zone	Primary Job Type
	2/24/2006	CODELL, ORIGINAL HOLE	RE-FRAC
Comment			

Total Add Amount	Total Clean Volume...	Vol Slurry Tot (gal)	Vol Gas Tot (MCF)
Proppant Ottawa 246360 lb		128184.01	
Avg Treat Pressure (psi)	Max Treat Pressure (psi)	Avg Treat Rate (bbl/min)	Max Treat Rate (bbl/min)
6,014.0	6,810.0	14.10	14.50

Well Name: STROH O02-08

VERTICAL - ORIGINAL HOLE, 7/2/2012 11:22:27 AM



Stimulations & Treatments

Bnch/Stg	Date	Zone	Primary Job Type	
	1/10/2012	CODELL, ORIGINAL HOLE	TRI-FRAC	
Comment				
(COD TRF): HAD BUFFER PUMP ISSUES THEN FRAC PUMP ISSUES AROUND THE 3 LB RAMP, 5 MIN SIP 2950				
Total Add Amount		Total Clean Volume...	Vol Slurry Tot (gal)	Vol Gas Tot (MCF)
Proppant Ottawa		130581.36	140919.66	
233397.301 lb				
Avg Treat Pressure (psi)	Max Treat Pressure (psi)	Avg Treat Rate (bbl/min)	Max Treat Rate (bbl/min)	
5,227.0	6,275.0	18.60	19.20	

Other In Hole

Run Date	Des	OD (in)	Top (ftKB)	Btm (ftKB)

Logs

Date	Type	Top (ftKB)	Btm (ftKB)
7/14/2003	COMPENSATED DENSITY	4,300.0	7,445.0
7/14/2003	DUAL INDUCTION	540.0	7,465.0
7/31/2003	CBL/CCL/GR	6,400.0	7,415.0