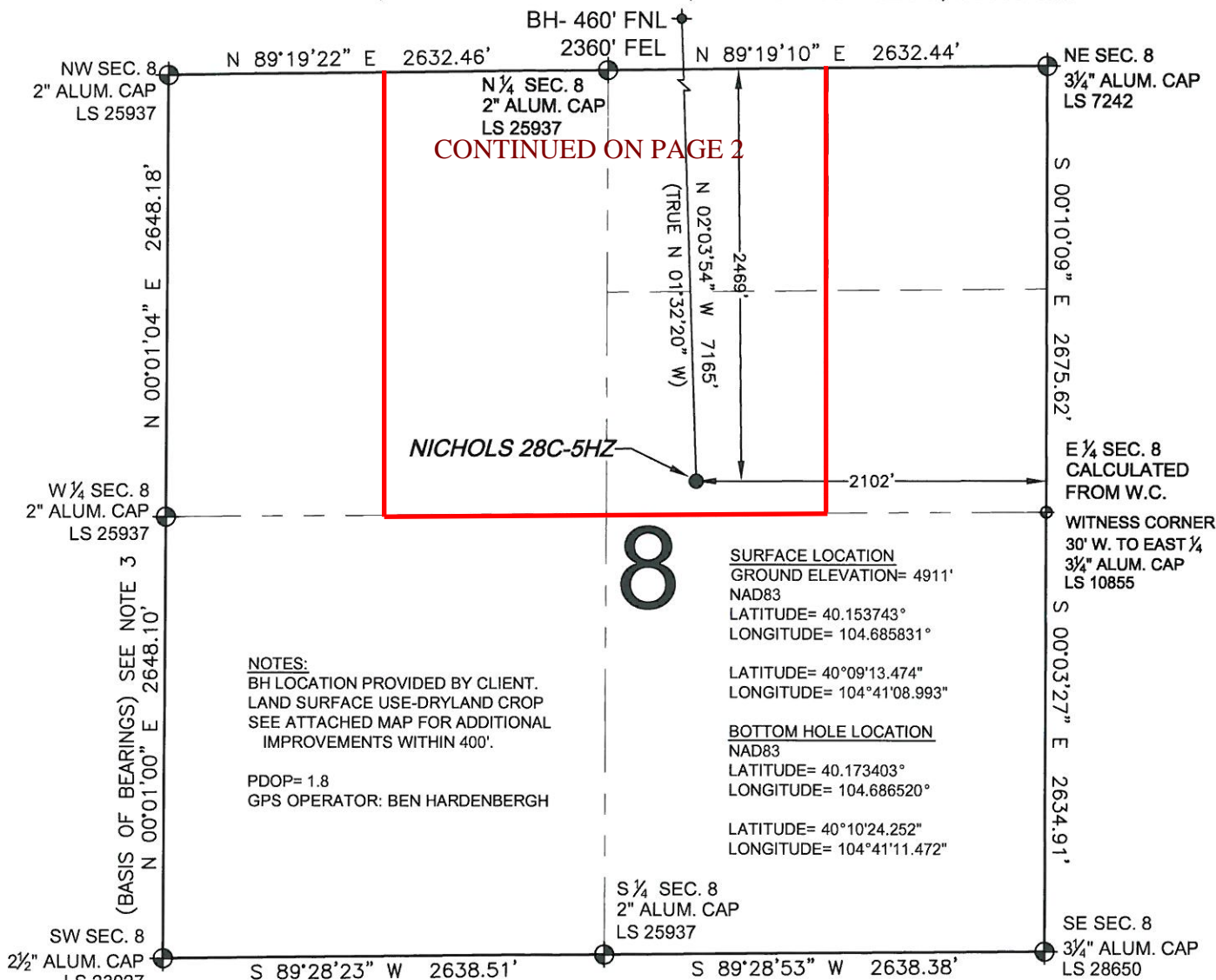


WELL LOCATION CERTIFICATE: NICHOLS 28C-5HZ

SECTION 8, TOWNSHIP 2 NORTH, RANGE 65 WEST, 6TH P.M.



NOTES:
 BH LOCATION PROVIDED BY CLIENT.
 LAND SURFACE USE-DRYLAND CROP
 SEE ATTACHED MAP FOR ADDITIONAL
 IMPROVEMENTS WITHIN 400'.

PDOP= 1.8
 GPS OPERATOR: BEN HARDENBERGH

SURFACE LOCATION
 GROUND ELEVATION= 4911'
 NAD83
 LATITUDE= 40.153743°
 LONGITUDE= 104.685831°

LATITUDE= 40°09'13.474"
 LONGITUDE= 104°41'08.993"

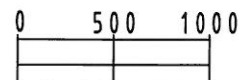
BOTTOM HOLE LOCATION
 NAD83
 LATITUDE= 40.173403°
 LONGITUDE= 104.686520°

LATITUDE= 40°10'24.252"
 LONGITUDE= 104°41'11.472"

WELL NICHOLS 28C-5HZ TO BE LOCATED 2469' FNL AND 2102' FEL, SECTION 8, T2N, R65W OF THE 6th P.M.

LEGEND

- ⊕ = EXISTING MONUMENT ♦ = BOTTOM HOLE BH = BOTTOM HOLE
- = PROPOSED WELL ◆ = EXISTING WELL

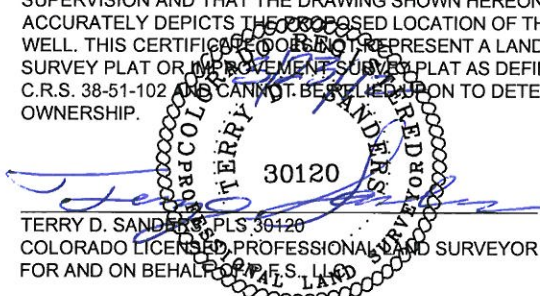


SCALE: 1"=1000'

NOTES:

- THIS FIELD SURVEY CONFORMS TO THE MINIMUM STANDARDS SET BY THE C.O.G.C.C., RULE NO. 215
- HORIZONTAL POSITIONS AND ORTHOMETRIC ELEVATIONS SHOWN AT THE WELL HEAD, ARE BASED ON GPS-RTK POSITIONS DERIVED FROM MINIMUM 2-HOUR STATIC OBSERVATIONS CORRECTED BY THE NATIONAL GEODETIC SURVEY ONLINE POSITIONING USER SERVICE, O.P.U.S. DATUM: HORIZONTAL = NAD83/2007, VERTICAL = NAVD88
- THE BASIS OF BEARINGS ARE STATE PLANE COORDINATE SYSTEM GRID BEARINGS SHOWN HEREON BETWEEN THE DESCRIBED THE MONUMENTS SHOWN HEREON.
- GRID DISTANCES ARE SHOWN, AS MEASURED IN THE FIELD, WITH TIES TO WELLS MEASURED PERPENDICULAR TO SECTION LINES.

I, TERRY D. SANDERS, A LICENSED PROFESSIONAL LAND SURVEYOR IN THE STATE OF COLORADO DO HEREBY CERTIFY TO **KERR-MCGEE OIL & GAS ONSHORE LP**, THAT THE SURVEY AND WELL LOCATION CERTIFICATE SHOWN HEREON WERE DONE BY ME OR UNDER MY DIRECT SUPERVISION AND THAT THE DRAWING SHOWN HEREON ACCURATELY DEPICTS THE PROPOSED LOCATION OF THE WELL. THIS CERTIFICATE DOES NOT REPRESENT A LAND SURVEY PLAT OR IMPROVEMENT SURVEY PLAT AS DEFINED BY C.R.S. 38-51-102 AND CANNOT BE RELIED UPON TO DETERMINE OWNERSHIP.



TERRY D. SANDERS, PLS 30120
 COLORADO LICENSED PROFESSIONAL LAND SURVEYOR
 FOR AND ON BEHALF OF P.F.S., LLC

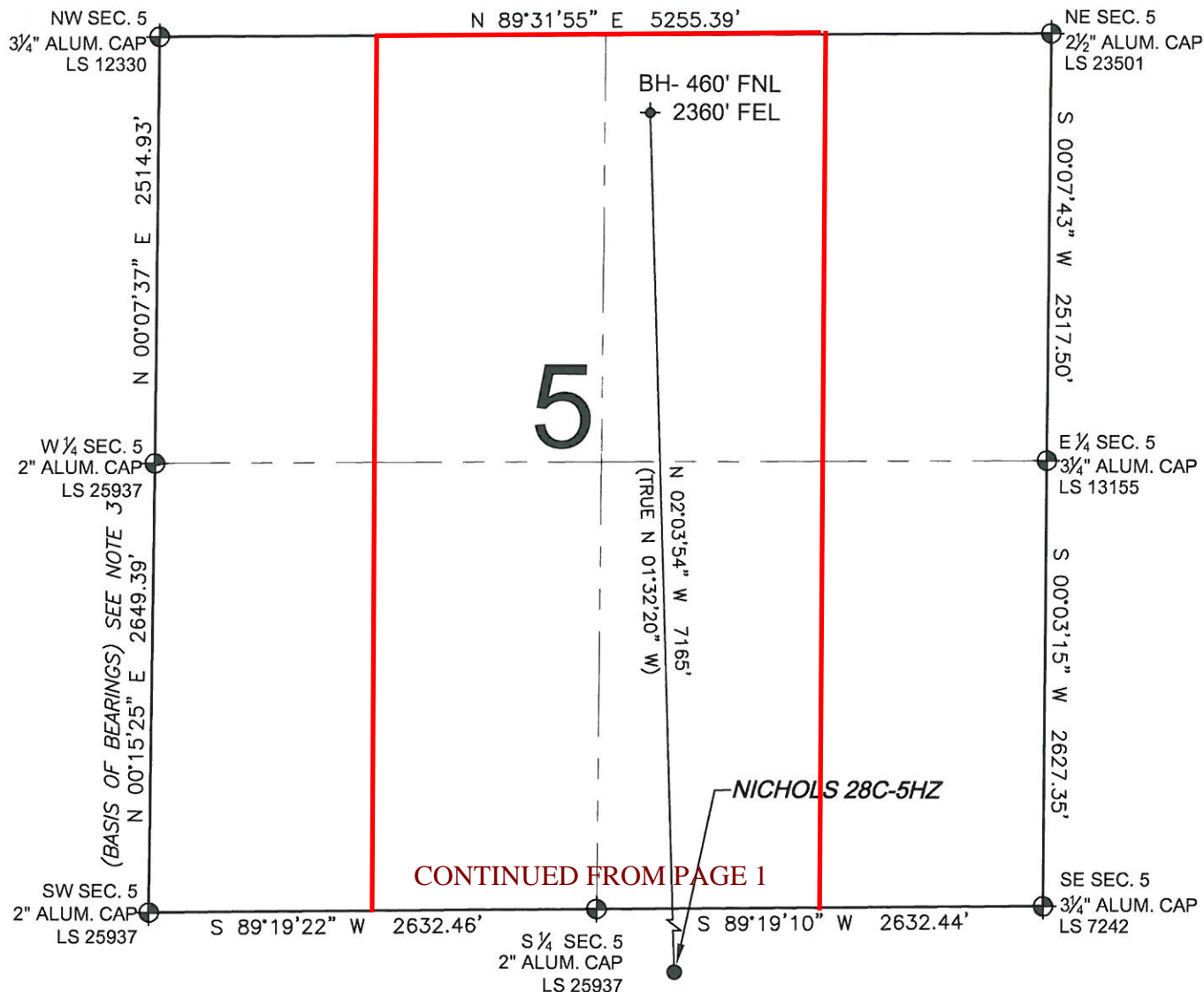
PAGE 1 OF 2

PREPARED BY: PFS Petroleum Field Services, LLC 1801 W. 13th Ave. Denver, CO 80204	FIELD DATE: 03-15-12	WELL NAME: NICHOLS 28C-5HZ
	DRAWING DATE: 03-19-12	SURFACE LOCATION: WELD COUNTY, COLORADO
	BY: KAG	SW 1/4 NE 1/4, SEC. 8, T2N, R65W

NOTICE: ACCORDING TO COLORADO LAW YOU MUST COMMENCE ANY LEGAL ACTION BASED UPON ANY DEFECT IN THIS SURVEY WITHIN THREE YEARS AFTER YOU FIRST DISCOVER SUCH DEFECT. IN NO EVENT MAY ANY ACTION BASED UPON ANY DEFECT IN THIS SURVEY BE COMMENCED MORE THAN TEN YEARS FROM THIS SAID DATE OF THIS CERTIFICATION SHOWN HEREON.

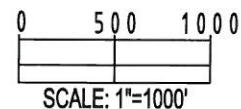
WELL LOCATION CERTIFICATE: NICHOLS 28C-5HZ

SECTION 8, TOWNSHIP 2 NORTH, RANGE 65 WEST, 6TH P.M.



LEGEND

- ⊕ = EXISTING MONUMENT
- = PROPOSED WELL
- ◆ = BOTTOM HOLE
- ◆ = EXISTING WELL
- BH = BOTTOM HOLE



NOTES:

1. THIS FIELD SURVEY CONFORMS TO THE MINIMUM STANDARDS SET BY THE C.O.G.C.C., RULE NO. 215
2. HORIZONTAL POSITIONS AND ORTHOMETRIC ELEVATIONS SHOWN AT THE WELL HEAD, ARE BASED ON GPS-RTK POSITIONS DERIVED FROM MINIMUM 2-HOUR STATIC OBSERVATIONS CORRECTED BY THE NATIONAL GEODETIC SURVEY ONLINE POSITIONING USER SERVICE, O.P.U.S. DATUM: HORIZONTAL = NAD83/2007, VERTICAL = NAVD88
3. THE BASIS OF BEARINGS ARE STATE PLANE COORDINATE SYSTEM GRID BEARINGS SHOWN HEREON BETWEEN THE DESCRIBED THE MONUMENTS SHOWN HEREON.
4. GRID DISTANCES ARE SHOWN, AS MEASURED IN THE FIELD, WITH TIES TO WELLS MEASURED PERPENDICULAR TO SECTION LINES.

TERRY D. SANDERS, P.L.S. 30120
 COLORADO LICENSED PROFESSIONAL LAND SURVEYOR
 FOR AND ON BEHALF OF P.F.S., LLC

PAGE 2 OF 2

PREPARED BY: Petroleum Field Services, LLC 1801 W. 13th Ave. Denver, CO 80204	FIELD DATE: 03-15-12	WELL NAME: NICHOLS 28C-5HZ
	DRAWING DATE: 03-19-12	SURFACE LOCATION: WELD COUNTY, COLORADO
BY: KAG		SW 1/4 NE 1/4, SEC. 8, T2N, R65W

NOTICE: ACCORDING TO COLORADO LAW YOU MUST COMMENCE ANY LEGAL ACTION BASED UPON ANY DEFECT IN THIS SURVEY WITHIN THREE YEARS AFTER YOU FIRST DISCOVER SUCH DEFECT. IN NO EVENT MAY ANY ACTION BASED UPON ANY DEFECT IN THIS SURVEY BE COMMENCED MORE THAN TEN YEARS FROM THIS SAID DATE OF THIS CERTIFICATION SHOWN HEREON.