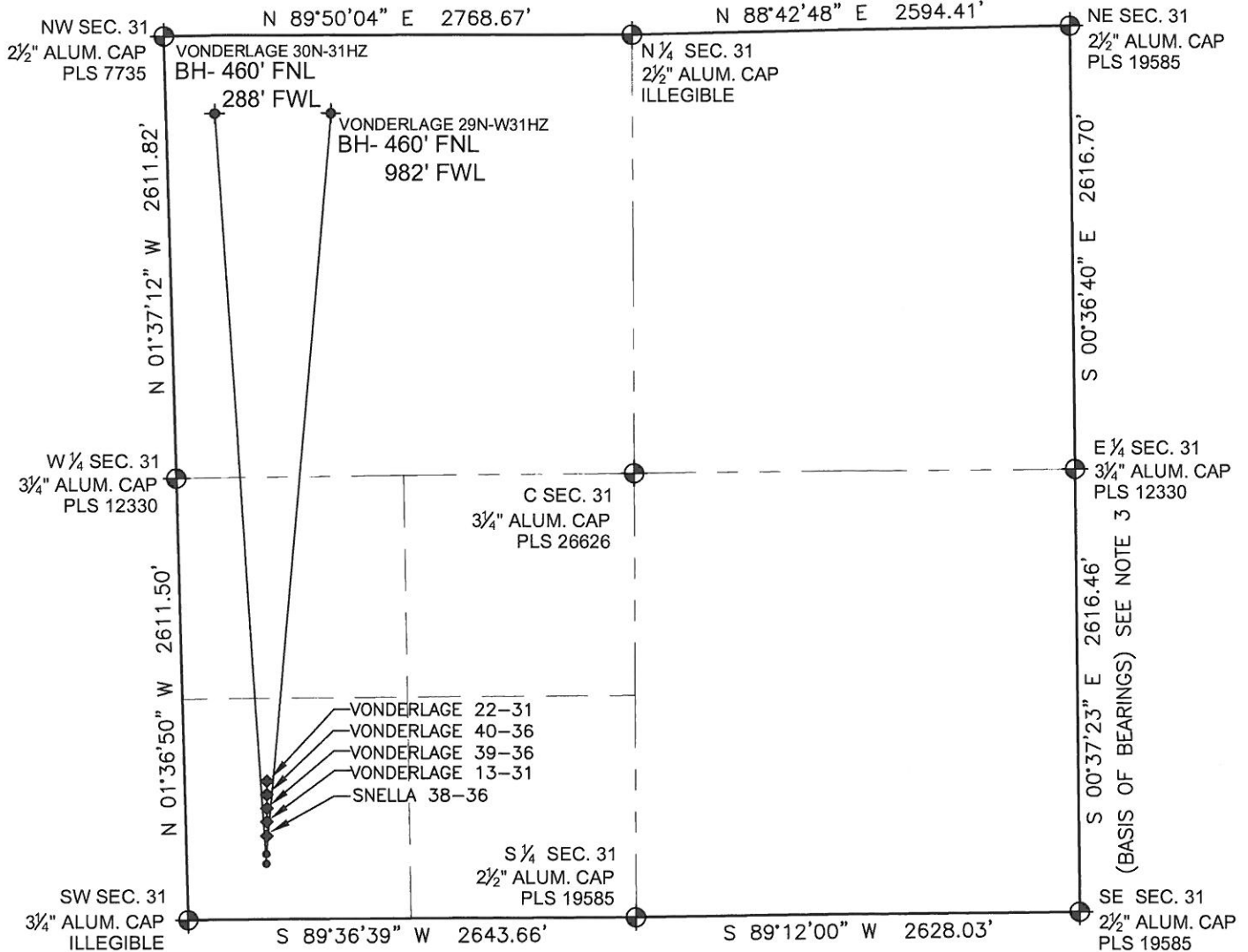


PAD DRAWING: VONDERLAGE 2 PAD

SECTION 31, TOWNSHIP 3 NORTH, RANGE 66 WEST, 6TH P.M.



LEGEND

- = EXISTING MONUMENT
 = BOTTOM HOLE
 BH= BOTTOM HOLE
 = PROPOSED WELL
 = EXISTING WELL

NOTES:

- THIS FIELD SURVEY CONFORMS TO THE MINIMUM STANDARDS SET BY THE C.O.G.C.C., RULE NO. 215
- HORIZONTAL POSITIONS AND ORTHOMETRIC ELEVATIONS SHOWN AT THE WELL HEAD, ARE BASED ON GPS-RTK POSITIONS DERIVED FROM MINIMUM 2-HOUR STATIC OBSERVATIONS CORRECTED BY THE NATIONAL GEODETIC SURVEY ONLINE POSITIONING USER SERVICE, O.P.U.S. DATUM: HORIZONTAL = NAD83/2007, VERTICAL = NAVD88
- THE BASIS OF BEARINGS ARE STATE PLANE COORDINATE SYSTEM GRID BEARINGS SHOWN HEREON BETWEEN THE DESCRIBED THE MONUMENTS SHOWN HEREON.
- GRID DISTANCES ARE SHOWN, AS MEASURED IN THE FIELD, WITH TIES TO WELLS MEASURED PERPENDICULAR TO SECTION LINES.

NOTES:

- VONDERLAGE 30N-31HZ TO BE AT 386' FSL, 476' FWL.
 BOTTOM HOLE AT 460' FNL & 288' FWL.
 VONDERLAGE 29N-W31HZ TO BE AT 416' FSL, 476' FWL.
 BOTTOM HOLE AT 460' FNL & 982' FWL.
 SNELLA 38-36 IS 446' FSL, 475' FWL.
 VONDERLAGE 13-31 IS 476' FSL, 475' FWL.
 VONDERLAGE 39-36 IS 506' FSL, 474' FWL.
 VONDERLAGE 40-36 IS 536' FSL, 475' FWL.
 VONDERLAGE 22-31 IS 565' FSL, 475' FWL.

PREPARED BY:



KERR-MCGEE OIL & GAS ONSHORE LP

FIELD DATE: 11-03-11	PAD NAME: VONDERLAGE 2 PAD
DRAWING DATE: 11-09-11	SURFACE LOCATION: WELD COUNTY, COLORADO
BY: SMF	SW 1/4 SW 1/4, SEC. 31, T3N, R66W, 6TH P.M.

