

Downhole Schematic for MARTINSON 0-6-24



Project :DJ Basin

API # :05123322330000

Surface Location : SWSW Sec 24 T4N - R66W 6th F

Area : Wattenberg

County :

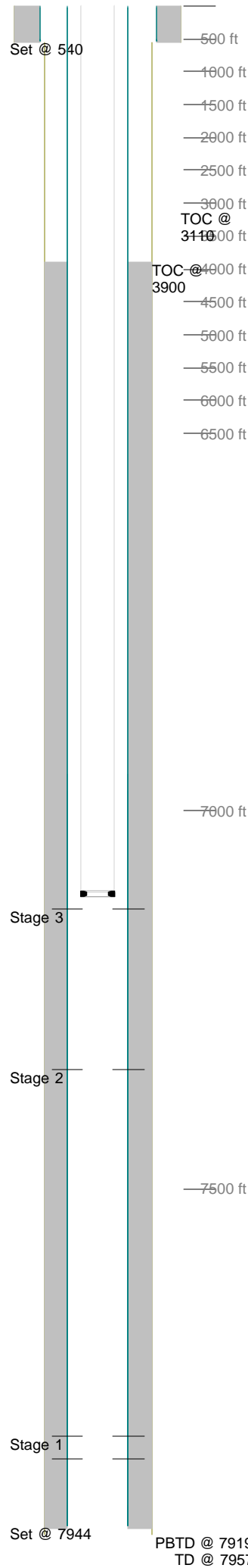
BHL : SWSW-24-4N-66 W 6th PM

As Of : 03/06/2012

GL : 4744.0 ft

KB to GL : 12.0 ft

KB : 4756.0 ft



Casing Details										
Section	Hole	Casing	Mass	Set At	Length	Thread	Grade	Description		
Surface	12.250	8.625	0	540	1			Guide Shoe		
			24	539	40	ST&C	J-55	Shoe Jt		
			0	499	0			Float Baffle		
		8.625	24	499	487	ST&C	J-55	Csg		
		8.625	24	12	12	ST&C	J-55	Landing Jt		
Production	7.875		0	7,944	1	LT&C		Guide Shoe		
		4.5	11.6	7,943	23	LT&C	N-80	Shoe Jt		
			0	7,920	1	LT&C		Float Collar		
		4.5	11.5	7,919	946	LT&C	SB-80	Casing		
		4.5	11.5	6,972	23	LT&C	N-80	Marker Joint		
		4.5	11.5	6,950	6,916	LT&C	SB-80	Casing		
			0	34	23	LT&C		Casing Pup		
		4.5	11.5	12	12	LT&C	N-80	Landing Jt		
Cement Details										
Section	Sequence	Top	Density	Blend / Additives						
Surface	Lead	0	14.5	TYPE III CEMENT / + 0.08 LBS/SK STATIC FREE + 1.5% CALCIUM CHLORIDE + 0.15 LBS/SK CELLO FLAKE + 60.5% FRESH WATER @14.5 PPG						
Production	Lead	3,900	12.5	Premium Lite Cement / + 0.7% FL-52 + 6% Bentonite + 0.2% CD-32 + 3 lbs/sack CSE-2 + 0.2% ASA-301 @ 12.5 PPG						
	Tail	6,500	13.5	(50:50) Poz G / + 0.6% FL-52 + 3% Bentonite + 0.1% SMS + 20% S-8 @ 13.5 PPG						
Tubing and Downhole Equipment										
O.D.	Length	Depth	Description							
0.000	10.00	10.00	KB							
2.375	7,095.70	7,105.70	216 jts. 2 3/8 J55							
2.375	1.10	7,106.80	2 3/8 S/N							
2.375	8.00	7,114.80	2 3/8 tbg. sub.							
0.000	1.70	7,116.50	Pump off bit sub							
0.000	0.30	7,116.80	3/7/8 Blade bit							
Perforations										
Stage	1					Date	From	To	Shots	
		Date	From	To	Shots	Stage 3	01/21/2012	7,342	7,358	32
		01/16/2012	7,856	7,872	32					
			7,826	7,844	36					
Stage	2					Date	From	To	Shots	
						01/21/2012	7,130	7,148	72	
Frac Summary										
Stage 1 : 7,826 - 7,872, 68 - 0.420" shots, 3803 bbls of Slickwater, 280700 lbs of 20-40 Sand Report Date: 01/22/2012										
Stage 2 : 7,342 - 7,358, 32 - 0.420" shots, 2339 bbls of Slickwater, 163341 lbs of 20-40 Sand Report Date: 01/22/2012										
Stage 3 : 7,130 - 7,148, 72 - 0.420" shots, 3275 bbls of Slickwater, 250500 lbs of 20-40 Sand Report Date: 01/24/2012										