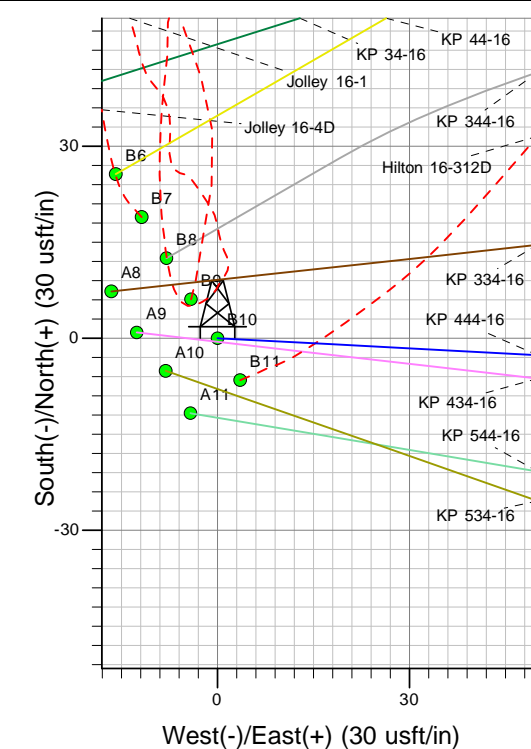
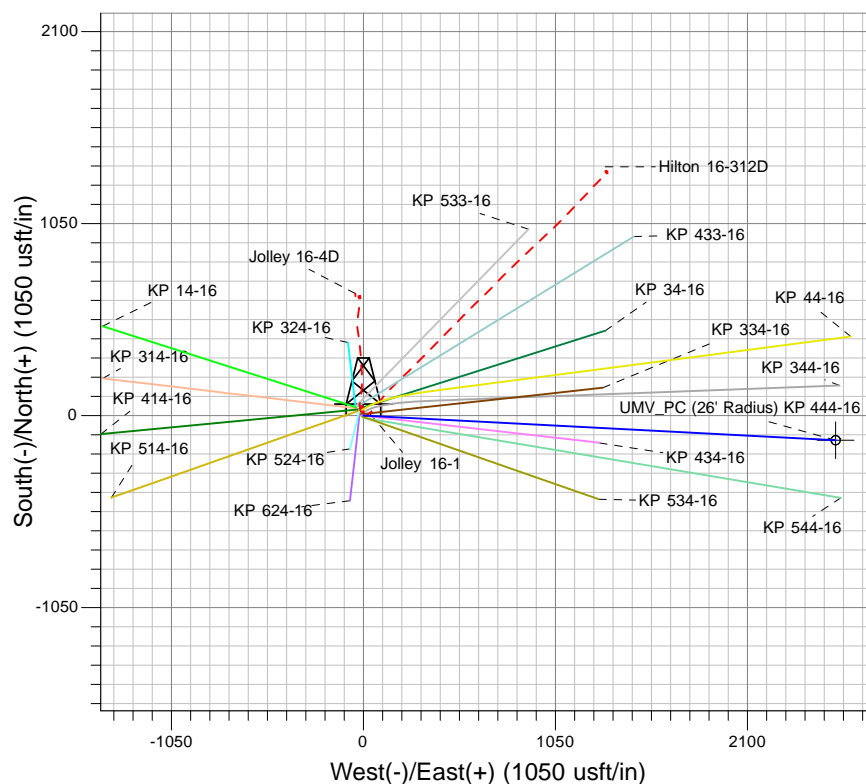
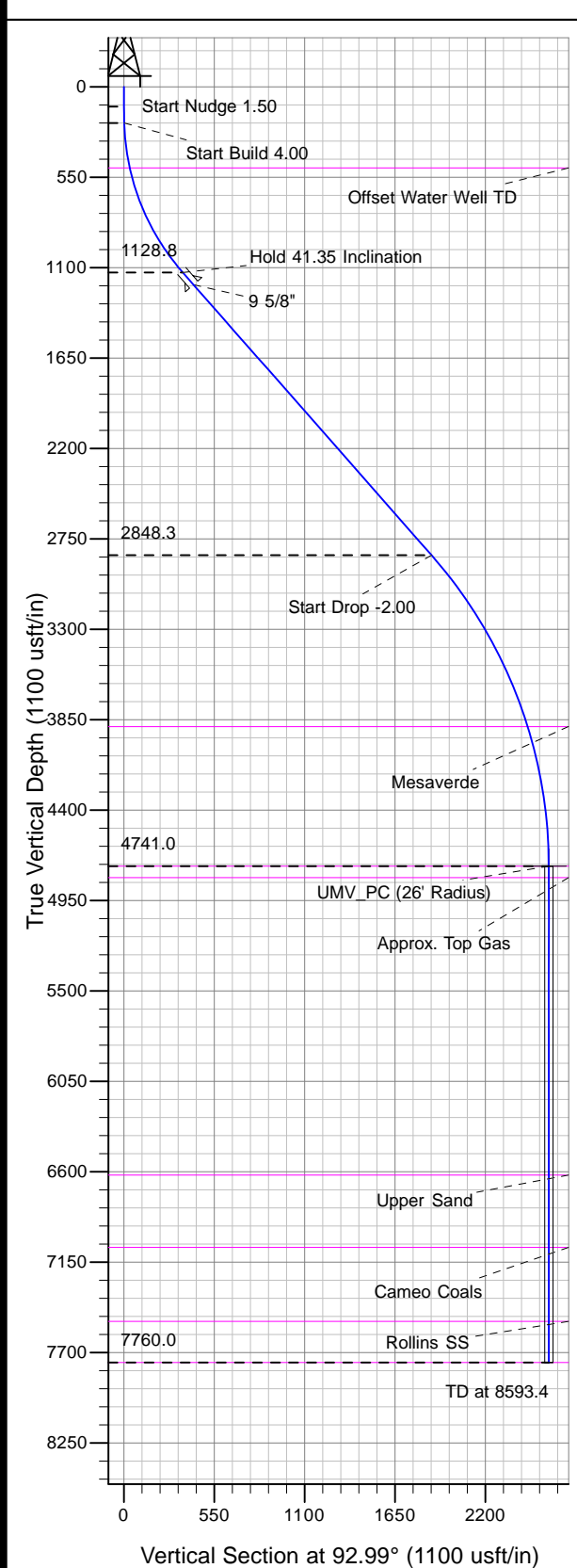




Well Name: KP 444-16
Surface Location: KP 24-16 Pad
North American Datum 1983 , US State Plane 1983 , Colorado Central Zone
Ground Elevation: 6788.0
+N/-S 0.0 +E/-W 0.0 Northing 1621795.70 Easting 2418432.70 Latitude 39° 31' 20.968 N Longitude 107° 33' 42.420 W Slot B10
KELLY BUSHING @ 6814.0usft (Nabors 573 (26' RKB) kjs)



Project: Sec. 16-T6S-R91W
Site: KP 24-16 Pad
Well: KP 444-16
Design #1 13Feb12 kjs



Azimuths to True North
Magnetic North: 10.04°
Magnetic Field
Strength: 52281.2snT
Dip Angle: 65.84°
Date: 2/13/2012
Model: IGRF2005-10

ANNOTATIONS

MD	Inc	Azi	TVD	+N/-S	+E/-W	Vsect	Departure	Annotation
120.0	0.00	0.00	120.0	0.0	0.0	0.0	0.0	Start Nudge 1.50
220.0	1.50	92.99	220.0	-0.1	1.3	1.3	1.3	Start Build 4.00
1216.3	41.35	92.99	1128.8	-18.7	357.5	358.0	358.0	Hold 41.35 Inclination
3506.9	41.35	92.99	2848.3	-97.5	1868.7	1871.3	1871.3	Start Drop -2.00
5574.4	0.00	0.00	4741.0	-134.7	2582.0	2585.5	2585.5	UMW_PC
8593.4	0.00	0.00	7760.0	-134.7	2582.0	2585.5	2585.5	TD at 8593.4