



PHOENIX SURVEYS, INC.

HIGH RESOLUTION INDUCTION
COMPENSATED NEUTRON

Company EnCana Oil & Gas (USA) Inc.
Well File 31-17
Field Wattenberg
County Weld
State/Province Colorado

Local: SHL 1036 FNL & 1742 FEL NWNE
BHL 3115 FNL & 2147 FEL NWNE
Sec 17, TWP 2N, R9E 6SW

Company Well Field County State/Private
Permanent Beam GL Elevation 4883
Drilling Measured From K/B
Date April 6, 2012
Run Number 3274
Depth Logger 3270
Bottom Logger Interval 3270

Top Log Interval Casing
Casing Depth 983
Casing OD 983
BIT Size 7-7/8
Type Fluid in Hole Chem. Gel
Density /Viscosity 3.25 / 1.1
Source of Sample Forming
Run @ Mass Temp 3.27 @ 97 F
Run @ Mass Temp 2.62 @ 97 F
Run @ Mass Temp 3.92 @ 97 F
Run @ Mass Temp 1.86 @ 97 F
Run @ RT 1.07 @ 238 F
Time Logger Stopped 1400
Maximum Recorded Temperature 238 F
Location Brighton, CO

Recorded By Matt Gill
Witnessed By Sandy Pulley

Recorded By
Witnessed By

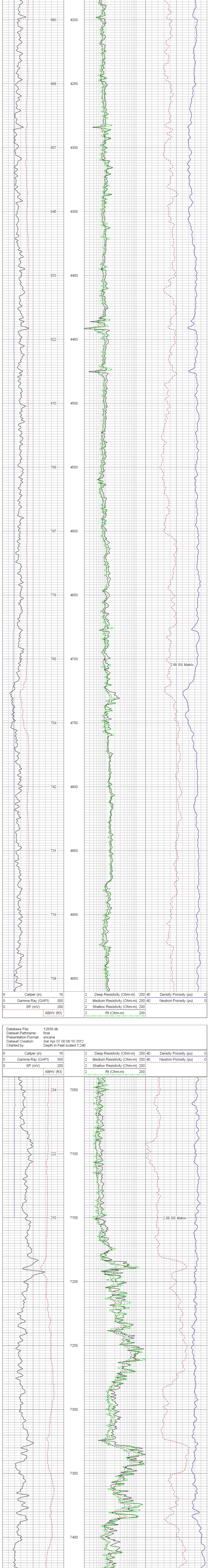
Annular volume calculated for 4.5" casing
Ensign Drilling Rig 124
Thank you for using Phoenix Surveys!!
API #: 05-123-34264-00

Database File: 12836.db
Dataset Pathname: final
Presentation Format: encana
Dataset Creation: Sat Apr 07 00:06:10 2012
Charted by: Depth in Feet scaled 1:240

6 Caliper (in) 16
0 Gamma Ray (GAPI) 300
0 SP (mV) 200
ABHV (ft3)

2 Deep Resistivity (Ohm-m) 200 40
2 Medium Resistivity (Ohm-m) 200 40
2 Shallow Resistivity (Ohm-m) 200
2 Rt (Ohm-m) 200

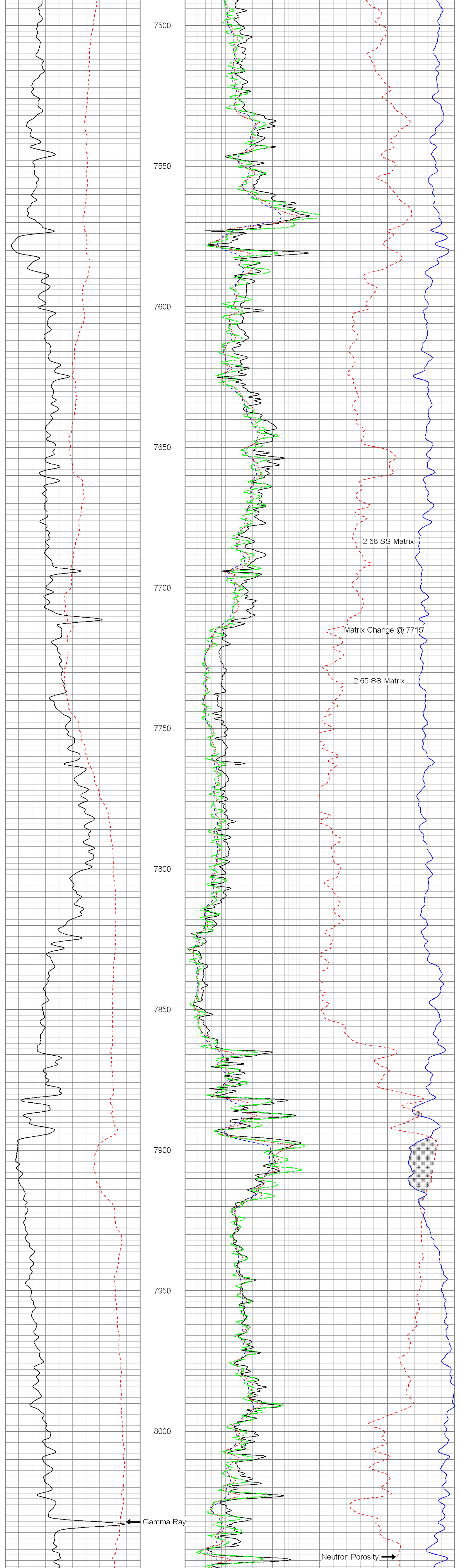
Density Porosity (pu) 0
Neutron Porosity (pu) 0



6 Caliper (in) 16
0 Gamma Ray (GAPI) 300
0 SP (mV) 200
ABHV (ft3)

2 Deep Resistivity (Ohm-m) 200 40
2 Medium Resistivity (Ohm-m) 200 40
2 Shallow Resistivity (Ohm-m) 200
2 Rt (Ohm-m) 200

Density Porosity (pu) 0
Neutron Porosity (pu) 0



6 Caliper (in) 16
0 Gamma Ray (GAPI) 300
0 SP (mV) 200
ABHV (ft3)

2 Deep Resistivity (Ohm-m) 200 40
2 Medium Resistivity (Ohm-m) 200 40
2 Shallow Resistivity (Ohm-m) 200
2 Rt (Ohm-m) 200

Density Porosity (pu) 0
Neutron Porosity (pu) 0

Gamma Ray
SP
Deep Resistivity
Shallow Resistivity
Medium Resistivity
Rt
Density Porosity
Neutron Porosity