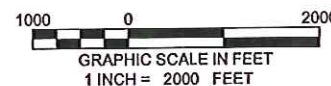
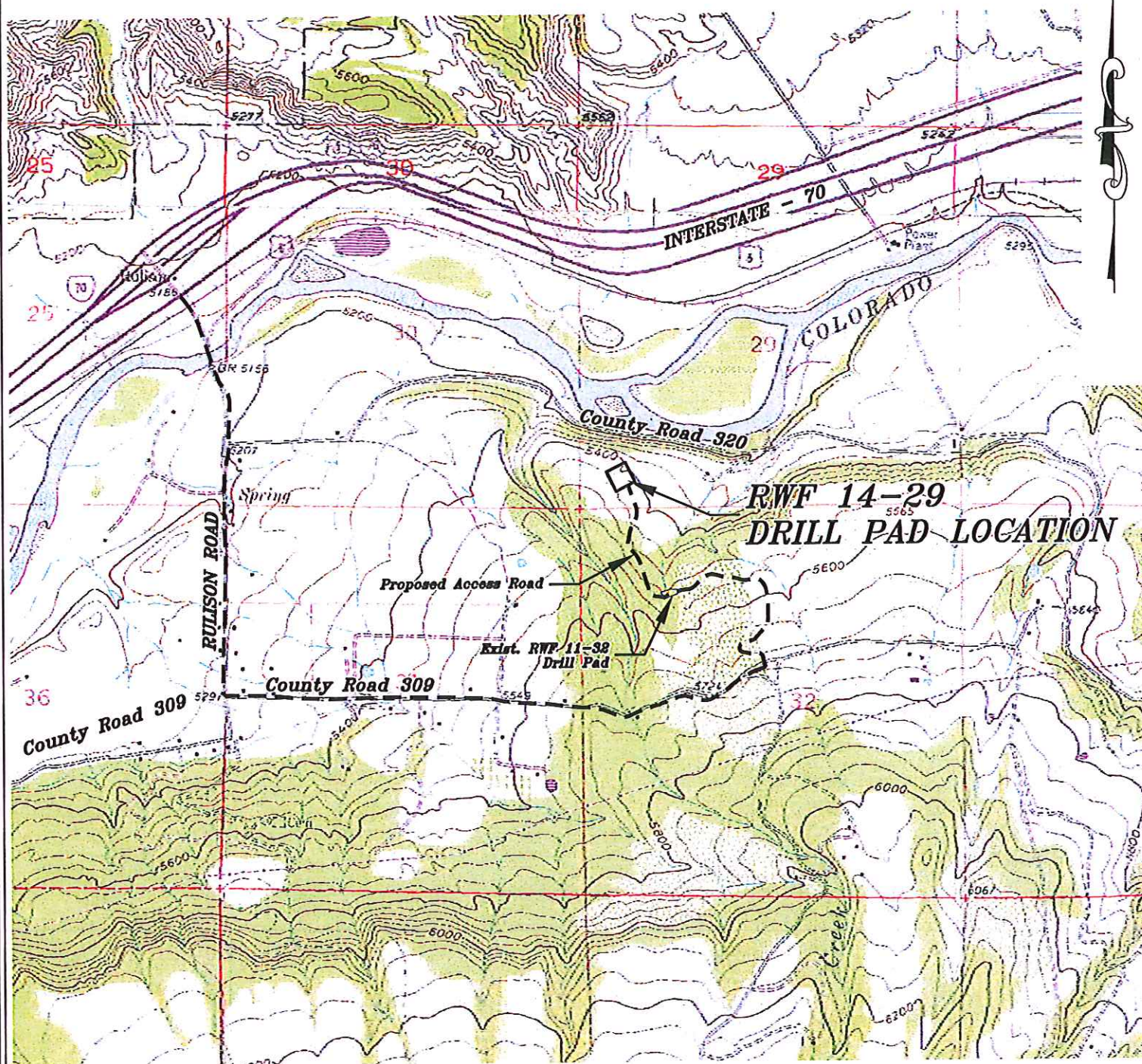


Section 29
T. 6 S., R 94 W



ACCESS DESCRIPTION:

FROM THE INTERSECTION OF STATE HIGHWAY 6 AND COUNTY ROAD 323 (RULISON ROAD) NORTH OF RULISON, PROCEED SOUTHERLY ALONG COUNTY ROAD 323 (RULISON ROAD) ± 1.1 MILES TO THE INTERSECTION WITH COUNTY ROAD 309 (RULISON PARACHUTE ROAD), PROCEED LEFT IN AN EASTERLY DIRECTION ± 1.5 MILES TO AN INTERSECTION WITH A DIRT/GRAVEL ROAD, PROCEED LEFT IN A NORTHERLY TO WESTERLY DIRECTION ± 0.5 MILES TO THE EXISTING RWF 11-32 DRILL PAD, PROCEED WESTERLY ACROSS THE DRILL PAD, PROCEED IN A NORTHERLY DIRECTION ± 0.4 MILES TO THE RWF 14-29 DRILL PAD LOCATION, AS SHOWN HEREON.

136 East Third Street
Rifle, Colorado 81650
Ph. (970) 625-2720
Fax (970) 625-2773



BOOKCLIFF
Survey Services, Inc.

SCALE: 1" = 2000'
DATE: 2/2/12
PLAT: 5 of 7
PROJECT: Valley
DFT: cws

Construction Plan Prepared for:
WPXENERGY WPX Energy Rocky Mountain, LLC

RWF 14-29 Drill Pad - Plat 5
ACCESS ROAD AND TOPO MAP