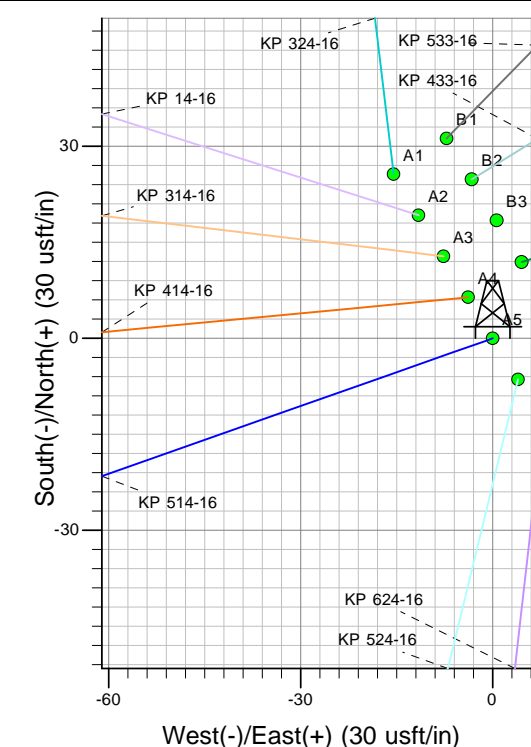
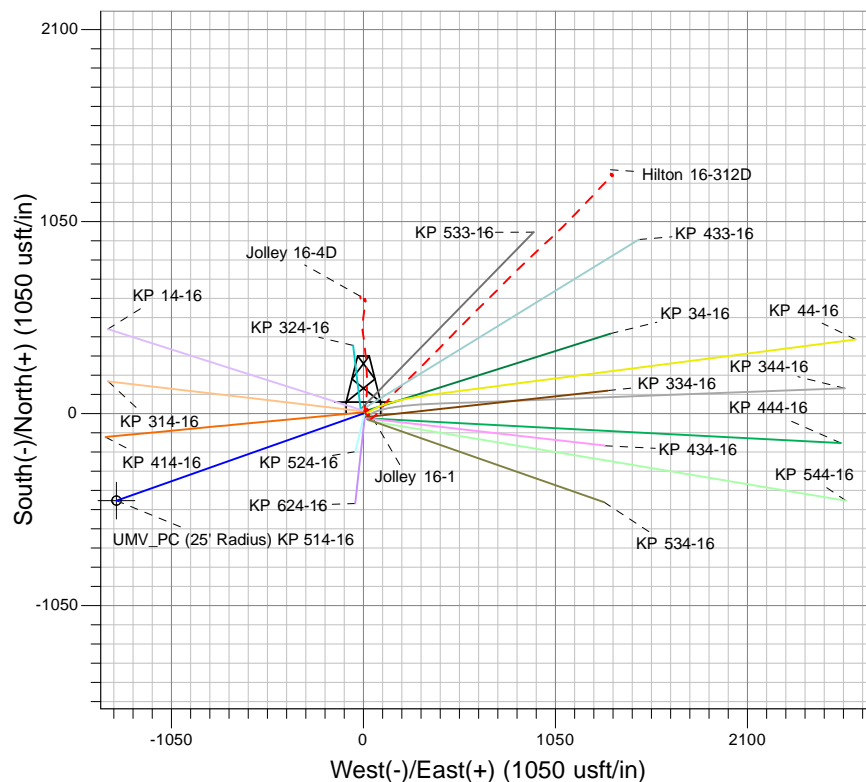
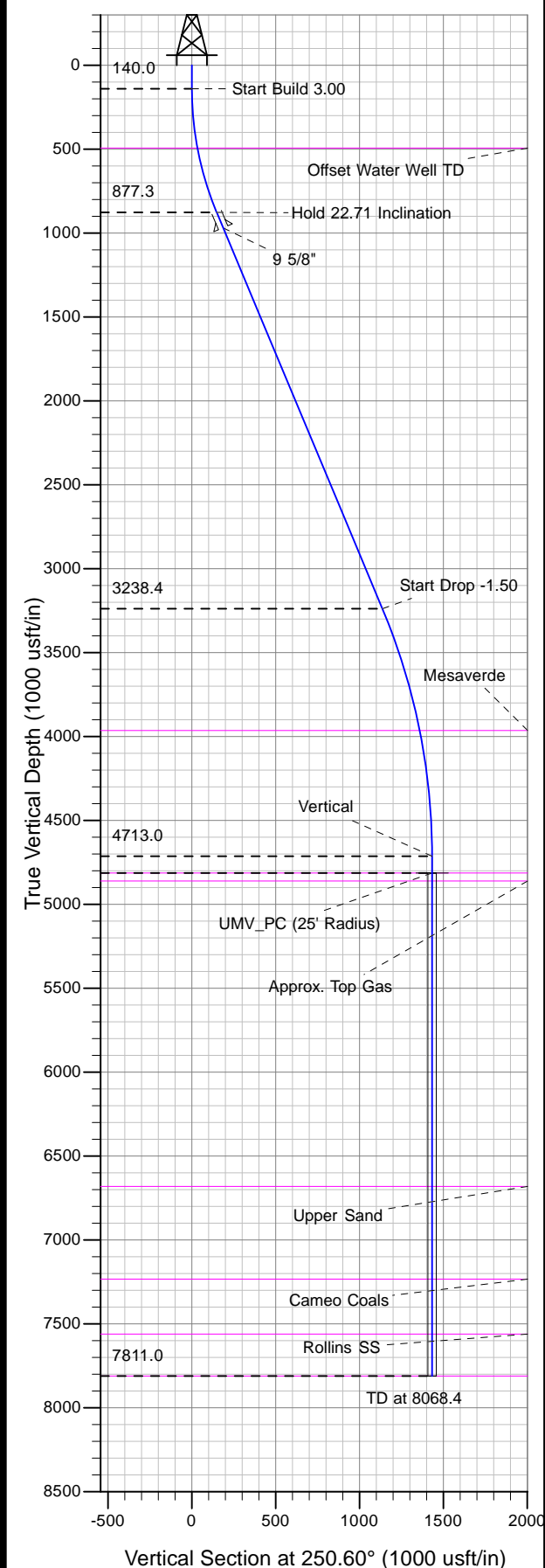




Well Name: KP 514-16  
Surface Location: KP 24-16 Pad  
North American Datum 1983 , US State Plane 1983 , Colorado Central Zone  
Ground Elevation: 6788.0

+N/-S	+E/-W	Northing	Easting	Latitude	Longitude	Slot
0.0	0.0	1621822.90	2418405.10	39° 31' 21.231 N	107° 33' 42.780 W	A5

KELLY BUSHING @ 6814.0usft (Nabors 573 (26' RKB) kjs)



Project: Sec. 16-T6S-R91W  
Site: KP 24-16 Pad  
Well: KP 514-16  
Design #1 30Nov09 kjs

Azimuths to True North  
Magnetic North: 10.33°  
Magnetic Field  
Strength: 52497.6snT  
Dip Angle: 65.90°  
Date: 11/30/2009  
Model: IGRF2005-10

#### ANNOTATIONS

MD	Inc	Azi	TVD	+N/-S	+E/-W	VSECT	Departure	Annotation
140.0	0.00	0.00	140.0	0.0	0.0	0.0	0.0	Start Build 3.00
897.0	22.71	250.60	877.3	-49.2	-139.7	148.1	148.1	Hold 22.71 Inclination
3456.5	22.71	250.60	3238.4	-377.4	-1071.6	1136.2	1136.2	Start Drop -1.50
4970.4	0.00	0.00	4713.0	-475.8	-1351.0	1432.3	1432.3	Vertical
5070.4	0.00	0.00	4813.0	-475.8	-1351.0	1432.3	1432.3	UMV_PC
8068.4	0.00	0.00	7811.0	-475.8	-1351.0	1432.3	1432.3	TD at 8068.4