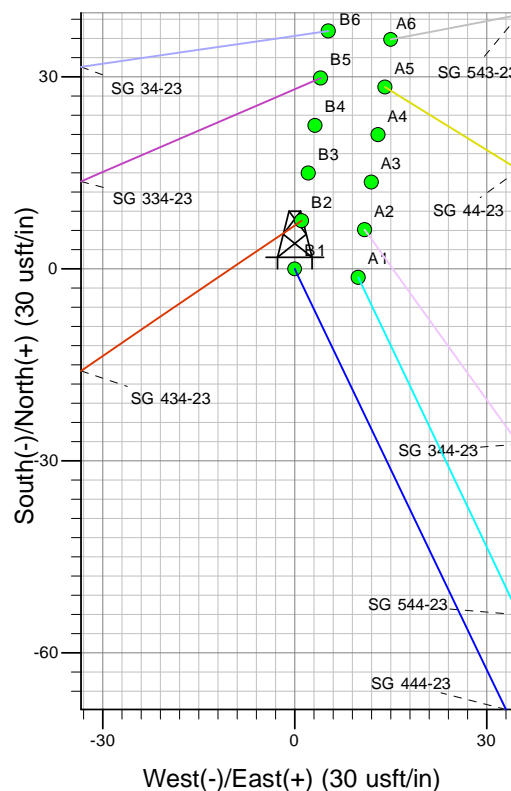
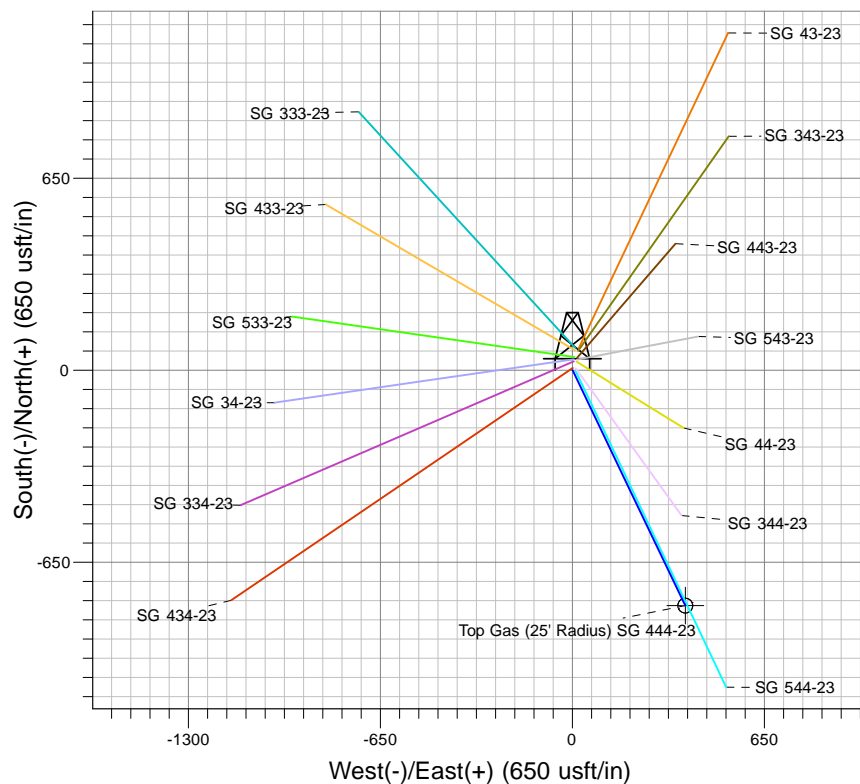
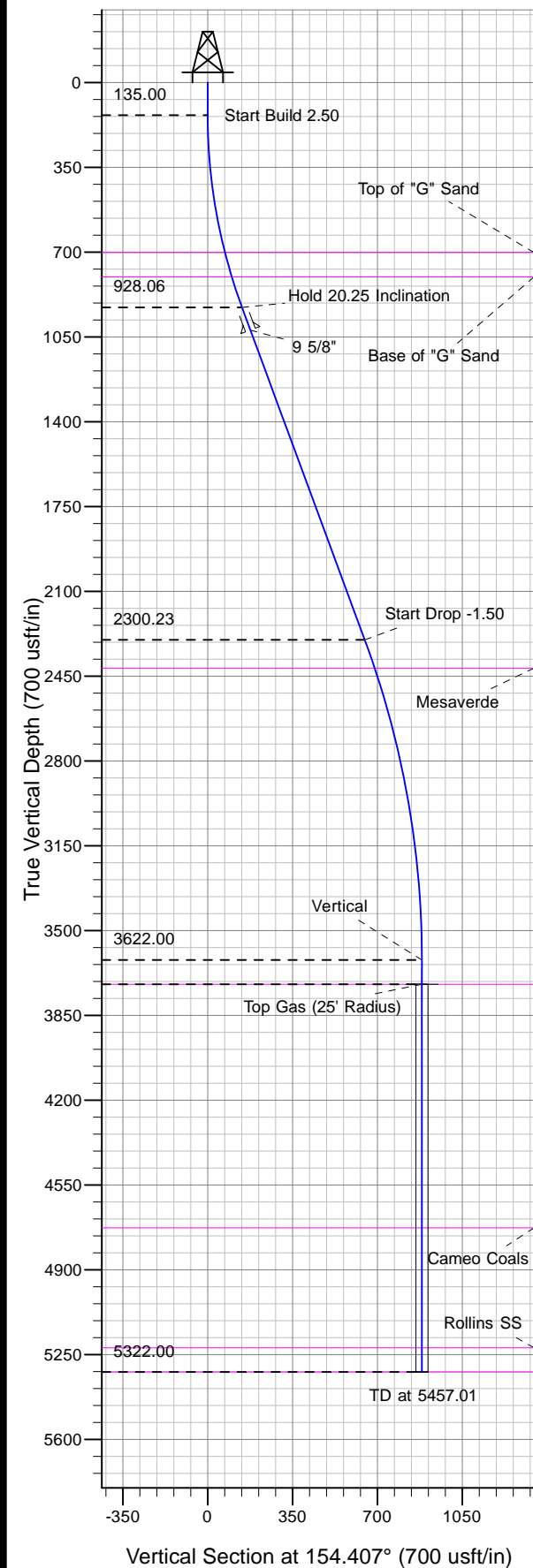




Well Name: SG 444-23
Surface Location: SG 44-23 Pad
North American Datum 1983 , US State Plane 1983, Colorado Central Zone
Ground Elevation: 5030.00
+N/-S +E/-W Northing Easting Latitude Longitude Slot
0.00 0.00 1587751.80 2273906.10 39.41894 -108.07050 B 1
KELLY BUSHING @ 5052.00usft (Cyclone 17)



Project: SG 23-07S-096W
Site: SG 44-23 Pad
Well: SG 444-23
Design #2 14Jun12 kjs

Azimuths to True North
Magnetic North: 10.30°
Magnetic Field
Strength: 52205.5snT
Dip Angle: 65.67°
Date: 10/20/2011
Model: IGRF2005-10

ANNOTATIONS

MD	Inc	Azi	TVD	+N/-S	+E/-W	VSect	Departure	Annotation
135.00	0.00	0.000	135.00	0.00	0.00	0.00	0.00	Start Build 2.50
944.81	20.25	154.407	928.06	-127.70	61.16	141.59	141.59	Hold 20.25 Inclination
2407.33	20.25	154.407	2300.23	-584.13	279.78	647.68	647.68	Start Drop -1.50
3757.01	0.00	0.000	3622.00	-796.96	381.72	883.66	883.66	Vertical
3857.01	0.00	0.000	3722.00	-796.96	381.72	883.66	883.66	Top Gas
5457.01	0.00	0.000	5322.00	-796.96	381.72	883.66	883.66	TD at 5457.01