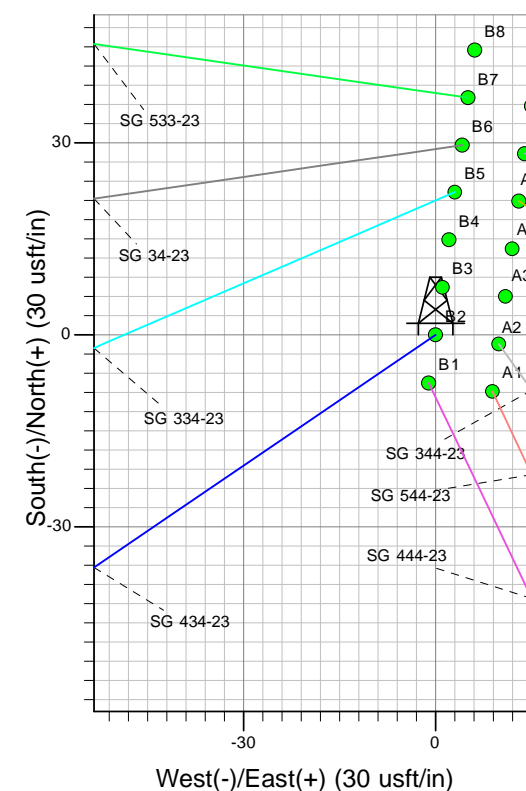
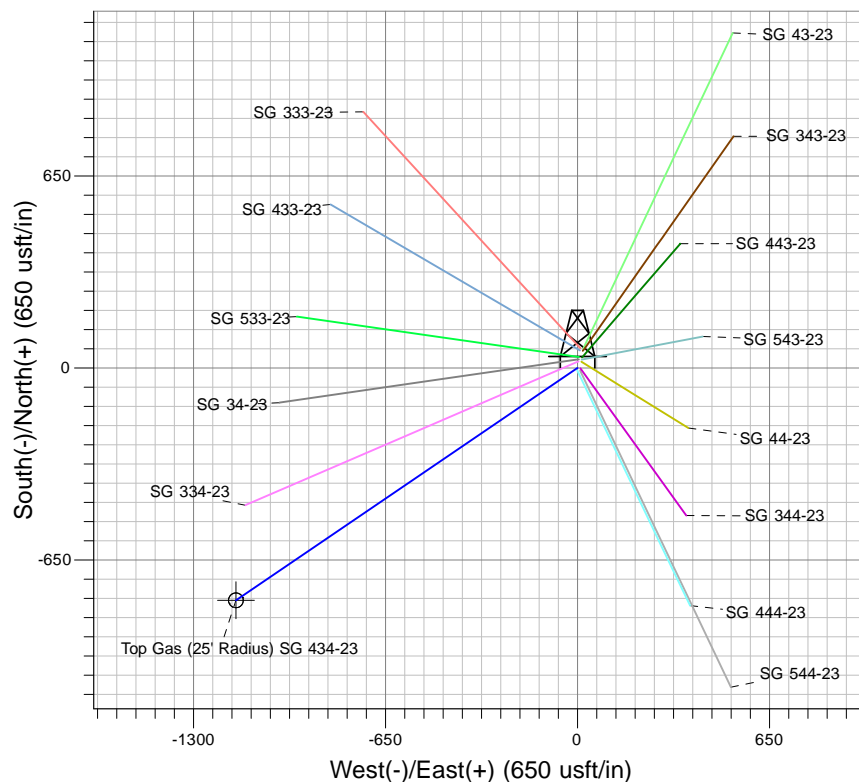
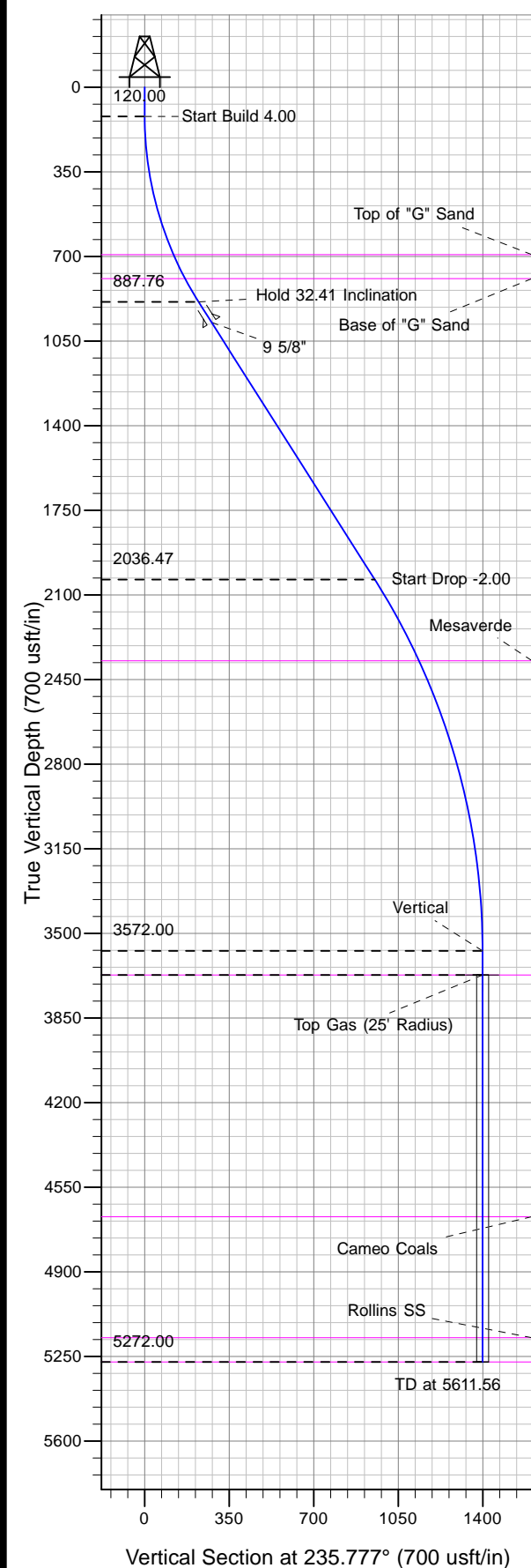




Well Name: SG 434-23  
Surface Location: SG 44-23 Pad  
North American Datum 1983 , US State Plane 1983 , Colorado Central Zone  
Ground Elevation: 5030.00

+N/-S	+E/-W	Northing	Easting	Latitude	Longitude	Slot
0.00	0.00	1587759.30	2273907.40	39.41896	-108.07050	B2

KELLY BUSHING @ 5052.00usft (Cyclone 17)



Project: SG 23-07S-096W  
Site: SG 44-23 Pad  
Well: SG 434-23  
Design #2 14Jun12 kjs

Azimuths to True North  
Magnetic North: 10.30°  
Magnetic Field  
Strength: 52205.5snT  
Dip Angle: 65.67°  
Date: 10/20/2011  
Model: IGRF2005-10

#### ANNOTATIONS

MD	Inc	Azi	TVD	+N/-S	+E/-W	Vsect	Departure	Annotation
120.00	0.00	0.000	120.00	0.00	0.00	0.00	0.00	Start Build 4.00
930.29	32.41	235.777	887.76	-125.50	-184.51	223.14	223.14	Hold 32.41 Inclination
2290.97	32.41	235.777	2036.47	-535.68	-787.55	952.47	952.47	Start Drop -2.00
3911.56	0.00	0.000	3572.00	-786.67	-1156.56	1398.75	1398.75	Vertical
4011.56	0.00	0.000	3672.00	-786.67	-1156.56	1398.75	1398.75	Top Gas
5611.56	0.00	0.000	5272.00	-786.67	-1156.56	1398.75	1398.75	TD at 5611.56