

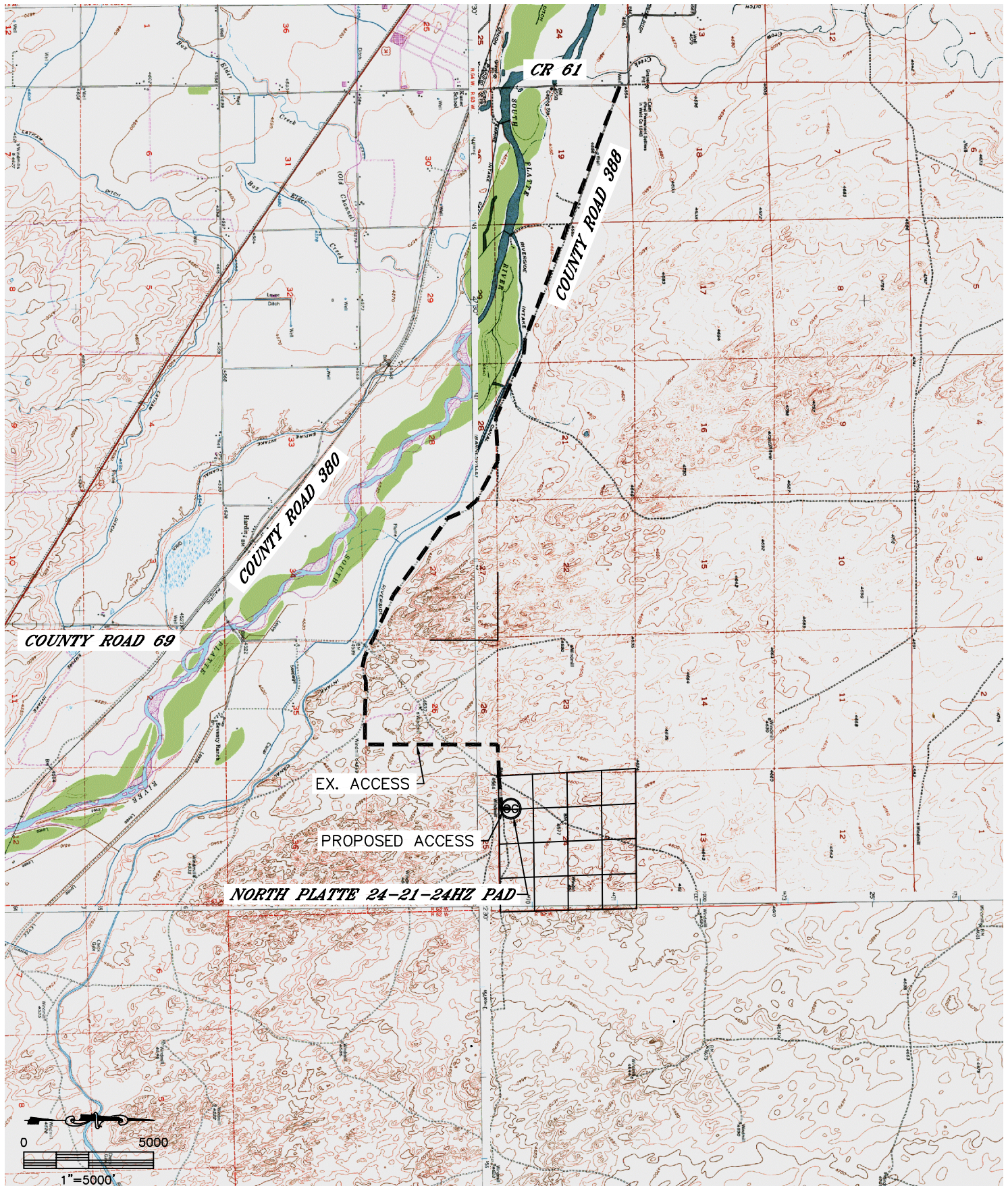


Lat40°, Inc. 1635 Foxtrail Drive, Suite 325 Loveland, CO 970-776-3321

ACCESS ROAD MAP

NORTH PLATTE 24-21-24HZ PAD

SECTION: 24
TOWNSHIP: 5N
RANGE: 63W



DATE: 4/12/2012
PROJECT#: 2012050