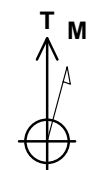
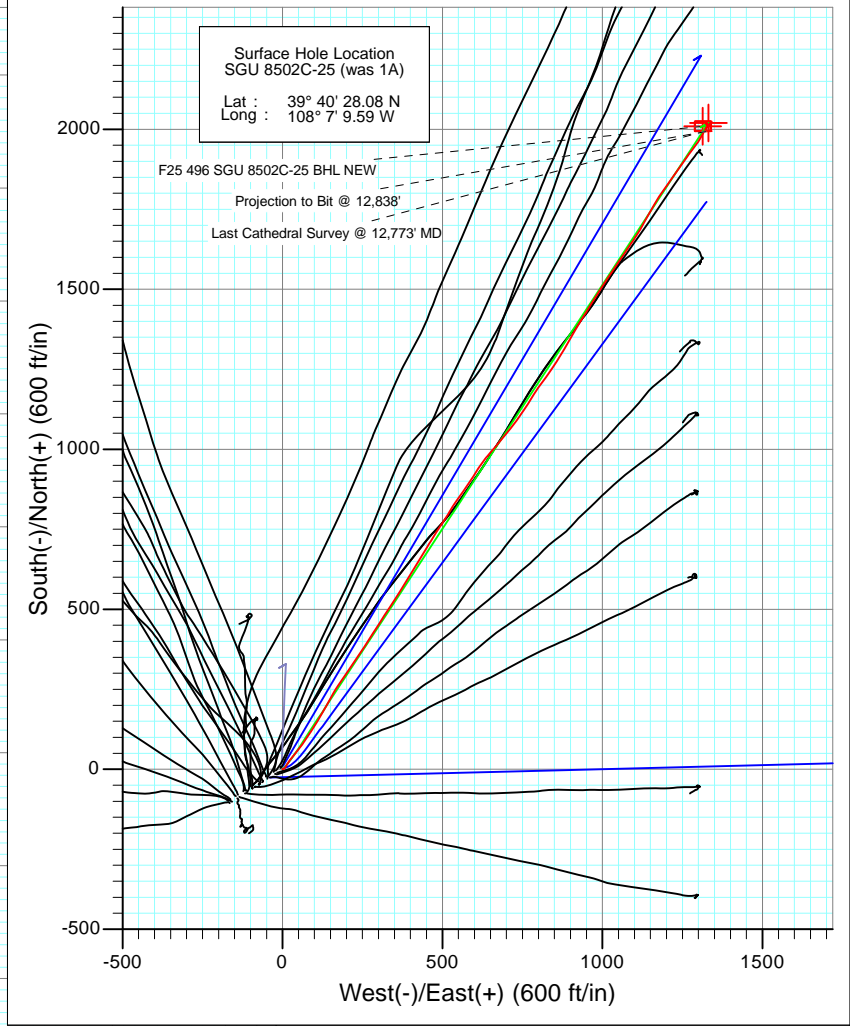
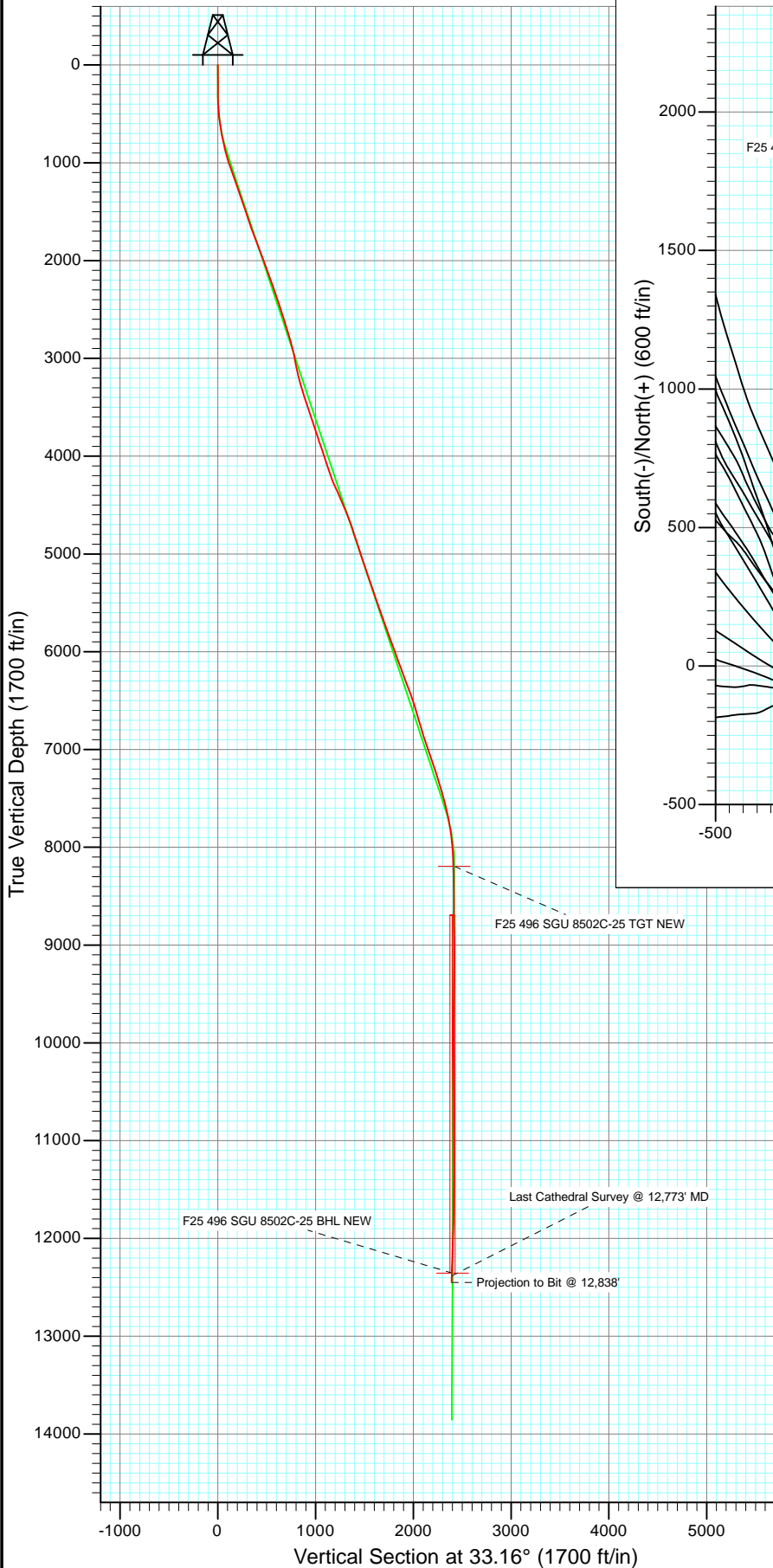




Project: Story Gulch  
 Site: F25 496  
 Well: SGU 8502C-25 (was 1A)  
 Wellbore: DD  
 Design: FINAL

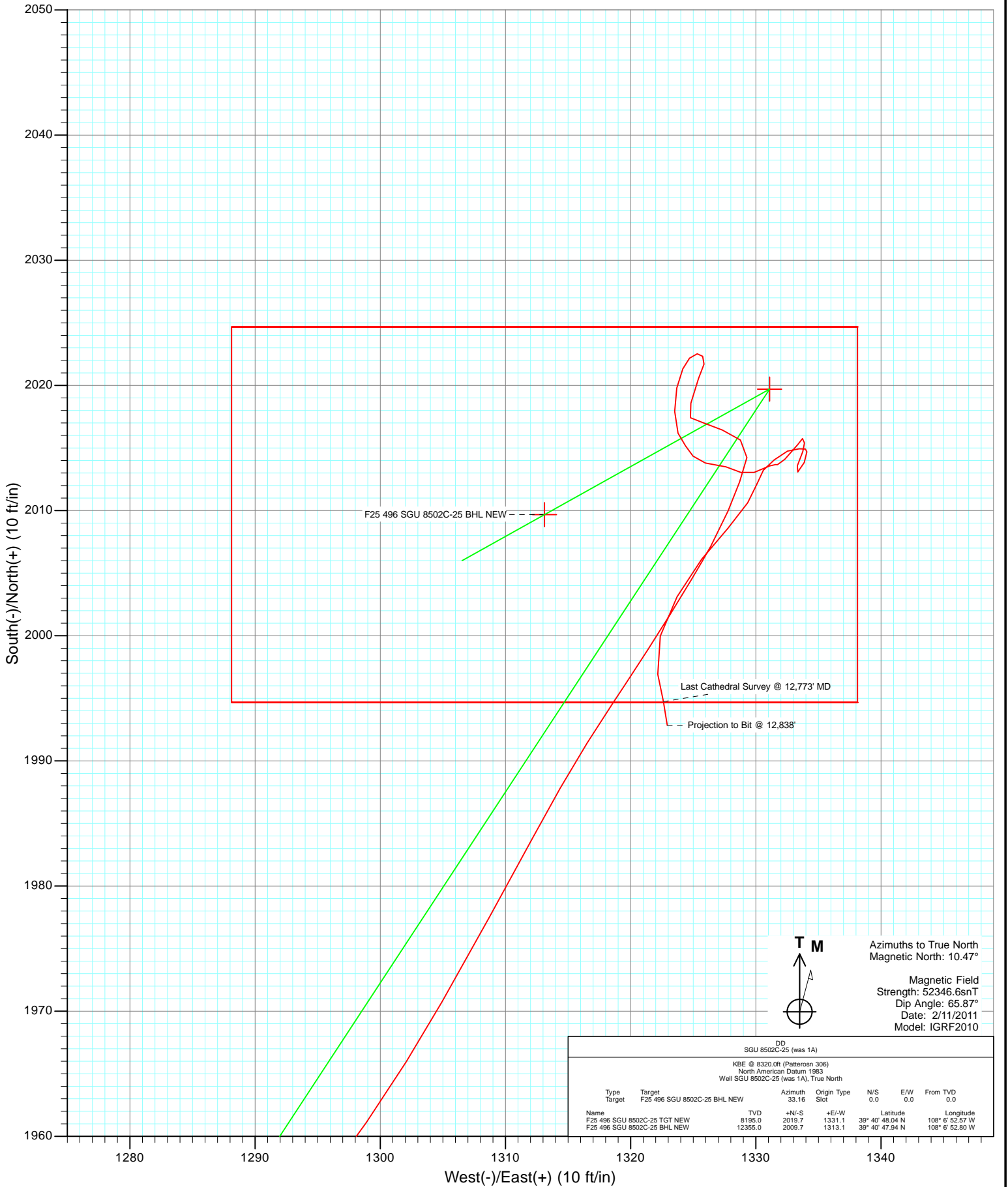


Azimuths to True North  
 Magnetic North: 10.47°  
 Magnetic Field  
 Strength: 52346.6snT  
 Dip Angle: 65.87°  
 Date: 2/11/2011  
 Model: IGRF2010

DD SGU 8502C-25 (was 1A)							
KBE @ 8320.0ft (Patterson 396) North American Datum 1983 Well SGU 8502C-25 (was 1A), True North							
Type	Target	TVD	Azimuth	Origin	Type	N/S	E/W
Target	F25 496 SGU 8502C-25 BHL NEW	33.16	Slot	Slot	Slot	0.0	0.0
Name						Latitude	Longitude
F25 496 SGU 8502C-25 TGT NEW		8195.0	2019.7	1331.1		39° 40' 48.04 N	108° 6' 52.57 W
F25 496 SGU 8502C-25 BHL NEW		12355.0	2009.7	1313.1		39° 40' 47.94 N	108° 6' 52.80 W



Project: Story Gulch  
 Site: F25 496  
 Well: SGU 8502C-25 (was 1A)  
 Wellbore: DD  
 Design: FINAL



# Cathedral Energy Services

## Survey Report

<b>Company:</b> EnCana Oil & Gas (USA) Inc	<b>Local Co-ordinate Reference:</b> Well SGU 8502C-25 (was 1A)
<b>Project:</b> Story Gulch	<b>TVD Reference:</b> KBE @ 8320.0ft (Patterosn 306)
<b>Site:</b> F25 496	<b>MD Reference:</b> KBE @ 8320.0ft (Patterosn 306)
<b>Well:</b> SGU 8502C-25 (was 1A)	<b>North Reference:</b> True
<b>Wellbore:</b> DD	<b>Survey Calculation Method:</b> Minimum Curvature
<b>Design:</b> DD	<b>Database:</b> USA EDM 5000 Multi Users DB

<b>Project</b> Story Gulch		
<b>Map System:</b> US State Plane 1983	<b>System Datum:</b> Mean Sea Level	
<b>Geo Datum:</b> North American Datum 1983		
<b>Map Zone:</b> Colorado Central Zone		

<b>Site</b> F25 496					
<b>Site Position:</b>		<b>Northing:</b> 1,681,091.06 ft	<b>Latitude:</b> 39° 40' 27.10 N		
<b>From:</b> Lat/Long		<b>Easting:</b> 2,262,632.54 ft	<b>Longitude:</b> 108° 7' 11.76 W		
<b>Position Uncertainty:</b> 0.0 ft		<b>Slot Radius:</b> 13.200 in	<b>Grid Convergence:</b> -1.65 °		

<b>Well</b> SGU 8502C-25 (was 1A)					
<b>Well Position</b>	<b>+N/-S</b> 0.0 ft	<b>Northing:</b> 1,681,185.16 ft	<b>Latitude:</b> 39° 40' 28.08 N		
	<b>+E/-W</b> 0.0 ft	<b>Easting:</b> 2,262,804.63 ft	<b>Longitude:</b> 108° 7' 9.59 W		
<b>Position Uncertainty</b>	0.0 ft	<b>Wellhead Elevation:</b> ft	<b>Ground Level:</b> 8,298.0 ft		

<b>Wellbore</b> DD					
<b>Magnetics</b>	<b>Model Name</b>	<b>Sample Date</b>	<b>Declination (°)</b>	<b>Dip Angle (°)</b>	<b>Field Strength (nT)</b>
	IGRF2010	2/11/2011	10.47	65.87	52,347

<b>Design</b> DD					
<b>Audit Notes:</b>					
<b>Version:</b> 1.0	<b>Phase:</b> ACTUAL	<b>Tie On Depth:</b> 0.0			
<b>Vertical Section:</b>	<b>Depth From (TVD) (ft)</b>	<b>+N/-S (ft)</b>	<b>+E/-W (ft)</b>	<b>Direction (°)</b>	
	0.0	0.0	0.0	33.16	

<b>Survey Program</b>		<b>Date</b> 8/10/2011
<b>From (ft)</b>	<b>To (ft)</b>	<b>Survey (Wellbore)</b>
190.0	2,957.0	Survey #1 (DD)
3,089.0	12,838.0	Survey #2 (DD)
		<b>Tool Name</b>
		MWD
		MWD
		<b>Description</b>
		Geolink MWD
		Geolink MWD

<b>Survey</b>									
Measured Depth (ft)	Inclination (°)	Azimuth (°)	Vertical Depth (ft)	+N/-S (ft)	+E/-W (ft)	Vertical Section (ft)	Dogleg Rate (°/100ft)	Build Rate (°/100ft)	Formations / Comments
0.0	0.00	0.00	0.0	0.0	0.0	0.0	0.00	0.00	
190.0	0.40	45.10	190.0	0.5	0.5	0.6	0.21	0.21	
221.0	0.30	107.70	221.0	0.5	0.6	0.8	1.21	-0.32	
252.0	0.30	105.50	252.0	0.5	0.8	0.8	0.04	0.00	
282.0	0.50	110.30	282.0	0.4	1.0	0.9	0.68	0.67	
313.0	0.70	83.10	313.0	0.4	1.3	1.0	1.11	0.65	
344.0	1.60	78.40	344.0	0.5	1.9	1.5	2.92	2.90	
375.0	2.20	64.50	375.0	0.8	2.9	2.3	2.43	1.94	
405.0	3.00	61.90	404.9	1.5	4.1	3.4	2.69	2.67	
498.0	5.70	36.60	497.7	6.3	9.0	10.2	3.50	2.90	
590.0	8.00	27.80	589.0	15.6	14.7	21.1	2.74	2.50	
682.0	9.60	37.20	679.9	27.4	22.3	35.2	2.33	1.74	

# Cathedral Energy Services

## Survey Report

<b>Company:</b>	EnCana Oil & Gas (USA) Inc	<b>Local Co-ordinate Reference:</b>	Well SGU 8502C-25 (was 1A)
<b>Project:</b>	Story Gulch	<b>TVD Reference:</b>	KBE @ 8320.0ft (Patterosn 306)
<b>Site:</b>	F25 496	<b>MD Reference:</b>	KBE @ 8320.0ft (Patterosn 306)
<b>Well:</b>	SGU 8502C-25 (was 1A)	<b>North Reference:</b>	True
<b>Wellbore:</b>	DD	<b>Survey Calculation Method:</b>	Minimum Curvature
<b>Design:</b>	DD	<b>Database:</b>	USA EDM 5000 Multi Users DB

Survey									
Measured Depth (ft)	Inclination (°)	Azimuth (°)	Vertical Depth (ft)	+N/-S (ft)	+E/-W (ft)	Vertical Section (ft)	Dogleg Rate (°/100ft)	Build Rate (°/100ft)	Formations / Comments
774.0	12.00	40.40	770.3	40.8	33.2	52.3	2.69	2.61	
869.0	14.10	37.30	862.8	57.5	46.6	73.6	2.33	2.21	
964.0	16.00	34.70	954.6	77.5	61.0	98.3	2.12	2.00	
1,060.0	19.50	33.90	1,046.0	101.7	77.5	127.5	3.65	3.65	
1,155.0	20.10	33.20	1,135.4	128.5	95.3	159.7	0.68	0.63	
1,250.0	19.40	30.80	1,224.8	155.7	112.3	191.8	1.13	-0.74	
1,345.0	19.00	29.50	1,314.5	182.7	128.0	223.0	0.62	-0.42	
1,441.0	18.40	28.50	1,405.4	209.7	142.9	253.7	0.71	-0.62	
1,536.0	18.10	30.60	1,495.7	235.5	157.6	283.4	0.76	-0.32	
1,631.0	19.00	33.80	1,585.7	261.1	173.7	313.6	1.43	0.95	
1,725.0	20.40	34.00	1,674.2	287.4	191.4	345.3	1.49	1.49	
1,820.0	21.40	34.40	1,763.0	315.4	210.4	379.2	1.06	1.05	
1,915.0	20.30	34.30	1,851.7	343.3	229.5	413.0	1.16	-1.16	
2,016.0	20.10	32.80	1,946.5	372.4	248.8	447.8	0.55	-0.20	
2,106.0	20.30	32.90	2,031.0	398.5	265.6	478.9	0.23	0.22	
2,201.0	20.40	32.60	2,120.1	426.3	283.5	511.9	0.15	0.11	
2,296.0	19.60	32.80	2,209.3	453.6	301.1	544.4	0.85	-0.84	
2,391.0	18.90	32.90	2,299.0	479.9	318.1	575.8	0.74	-0.74	
2,487.0	18.60	33.80	2,389.9	505.7	335.0	606.6	0.43	-0.31	
2,582.0	18.40	32.20	2,480.0	531.0	351.4	636.7	0.57	-0.21	
2,677.0	17.80	31.80	2,570.3	556.0	367.1	666.3	0.64	-0.63	
2,772.0	16.70	31.30	2,661.0	580.0	381.8	694.4	1.17	-1.16	
2,867.0	17.10	31.80	2,751.9	603.6	396.3	722.0	0.45	0.42	
2,957.0	16.10	33.20	2,838.2	625.2	410.1	747.7	1.20	-1.11	Last Cathedral Survey @ 2,957' MD
3,089.0	11.90	28.60	2,966.2	652.5	426.6	779.6	3.29	-3.18	
3,181.0	10.30	31.30	3,056.5	667.9	435.4	797.3	1.83	-1.74	
3,272.0	12.60	34.00	3,145.7	683.1	445.2	815.4	2.59	2.53	
3,364.0	15.40	29.30	3,235.0	702.0	456.8	837.6	3.28	3.04	
3,455.0	17.10	32.60	3,322.3	723.9	469.9	863.0	2.13	1.87	
3,547.0	18.10	33.00	3,410.0	747.2	485.0	890.8	1.09	1.09	
3,639.0	18.70	34.10	3,497.3	771.4	501.1	919.9	0.75	0.65	
3,730.0	18.20	31.00	3,583.6	795.7	516.6	948.7	1.21	-0.55	
3,822.0	18.80	31.50	3,670.9	820.6	531.7	977.8	0.67	0.65	
3,913.0	17.50	36.00	3,757.4	844.2	547.4	1,006.2	2.10	-1.43	
4,005.0	19.00	35.80	3,844.7	867.6	564.3	1,034.9	1.63	1.63	
4,096.0	19.30	33.50	3,930.7	892.1	581.3	1,064.8	0.89	0.33	
4,188.0	17.20	31.50	4,018.1	916.4	596.8	1,093.6	2.38	-2.28	
4,279.0	18.30	33.70	4,104.7	939.8	611.7	1,121.3	1.42	1.21	
4,371.0	19.60	36.70	4,191.8	964.1	629.0	1,151.2	1.77	1.41	
4,463.0	23.40	41.10	4,277.3	990.3	650.2	1,184.7	4.48	4.13	
4,554.0	24.80	39.30	4,360.4	1,018.7	674.2	1,221.5	1.74	1.54	
4,646.0	23.70	40.60	4,444.3	1,047.7	698.4	1,259.1	1.33	-1.20	
4,737.0	22.80	36.30	4,527.9	1,075.8	720.8	1,294.8	2.11	-0.99	
4,829.0	21.10	36.20	4,613.2	1,103.5	741.1	1,329.1	1.85	-1.85	
4,920.0	19.40	33.10	4,698.6	1,129.4	759.0	1,360.6	2.21	-1.87	
5,012.0	17.80	30.50	4,785.8	1,154.3	774.5	1,389.9	1.96	-1.74	
5,103.0	18.30	34.30	4,872.3	1,178.1	789.6	1,418.1	1.41	0.55	
5,195.0	18.30	35.10	4,959.7	1,201.8	806.1	1,447.0	0.27	0.00	
5,286.0	19.00	36.30	5,045.9	1,225.4	823.1	1,476.1	0.88	0.77	
5,378.0	18.90	34.80	5,132.9	1,249.8	840.4	1,505.9	0.54	-0.11	
5,469.0	18.30	31.00	5,219.2	1,274.1	856.2	1,534.9	1.49	-0.66	
5,561.0	19.00	32.40	5,306.3	1,299.1	871.7	1,564.3	0.90	0.76	
5,653.0	19.30	29.80	5,393.2	1,325.0	887.2	1,594.5	0.98	0.33	

# Cathedral Energy Services

## Survey Report

<b>Company:</b>	EnCana Oil & Gas (USA) Inc	<b>Local Co-ordinate Reference:</b>	Well SGU 8502C-25 (was 1A)
<b>Project:</b>	Story Gulch	<b>TVD Reference:</b>	KBE @ 8320.0ft (Patterosn 306)
<b>Site:</b>	F25 496	<b>MD Reference:</b>	KBE @ 8320.0ft (Patterosn 306)
<b>Well:</b>	SGU 8502C-25 (was 1A)	<b>North Reference:</b>	True
<b>Wellbore:</b>	DD	<b>Survey Calculation Method:</b>	Minimum Curvature
<b>Design:</b>	DD	<b>Database:</b>	USA EDM 5000 Multi Users DB

Survey									
Measured Depth (ft)	Inclination (°)	Azimuth (°)	Vertical Depth (ft)	+N/-S (ft)	+E/-W (ft)	Vertical Section (ft)	Dogleg Rate (°/100ft)	Build Rate (°/100ft)	Formations / Comments
5,744.0	19.00	29.80	5,479.2	1,350.9	902.1	1,624.3	0.33	-0.33	
5,836.0	19.00	30.60	5,566.2	1,376.8	917.1	1,654.2	0.28	0.00	
5,927.0	19.20	32.00	5,652.2	1,402.2	932.6	1,684.0	0.55	0.22	
6,019.0	20.40	32.20	5,738.7	1,428.6	949.2	1,715.1	1.31	1.30	
6,110.0	20.20	30.90	5,824.1	1,455.5	965.7	1,746.7	0.54	-0.22	
6,202.0	19.90	32.80	5,910.5	1,482.3	982.3	1,778.2	0.78	-0.33	
6,293.0	20.10	33.40	5,996.0	1,508.4	999.3	1,809.3	0.31	0.22	
6,385.0	20.20	32.40	6,082.4	1,535.0	1,016.5	1,841.0	0.39	0.11	
6,476.0	19.60	34.80	6,168.0	1,560.8	1,033.7	1,872.0	1.11	-0.66	
6,568.0	20.60	34.10	6,254.4	1,586.8	1,051.5	1,903.6	1.12	1.09	
6,659.0	21.60	33.50	6,339.3	1,614.1	1,069.8	1,936.3	1.12	1.10	
6,751.0	20.20	34.60	6,425.2	1,641.3	1,088.1	1,969.2	1.58	-1.52	
6,843.0	17.00	33.50	6,512.4	1,665.6	1,104.6	1,998.5	3.50	-3.48	
6,934.0	17.00	30.10	6,599.4	1,688.2	1,118.6	2,025.1	1.09	0.00	
7,026.0	16.80	28.00	6,687.4	1,711.5	1,131.6	2,051.8	0.70	-0.22	
7,117.0	16.60	29.00	6,774.6	1,734.5	1,144.1	2,077.8	0.38	-0.22	
7,209.0	16.90	30.90	6,862.7	1,757.5	1,157.3	2,104.3	0.68	0.33	
7,300.0	18.20	32.40	6,949.5	1,780.8	1,171.7	2,131.7	1.51	1.43	
7,392.0	20.20	34.70	7,036.3	1,806.0	1,188.4	2,162.0	2.32	2.17	
7,483.0	19.70	34.90	7,121.9	1,831.5	1,206.2	2,193.0	0.55	-0.55	
7,575.0	18.60	34.90	7,208.8	1,856.3	1,223.4	2,223.2	1.20	-1.20	
7,666.0	17.00	35.90	7,295.4	1,879.0	1,239.5	2,251.0	1.79	-1.76	
7,758.0	16.50	35.00	7,383.5	1,900.6	1,254.9	2,277.5	0.61	-0.54	
7,849.0	15.00	36.60	7,471.1	1,920.6	1,269.4	2,302.1	1.72	-1.65	
7,941.0	14.50	35.70	7,560.1	1,939.5	1,283.2	2,325.5	0.60	-0.54	
8,032.0	11.70	36.70	7,648.7	1,956.2	1,295.3	2,346.1	3.09	-3.08	
8,124.0	10.20	29.50	7,739.0	1,970.7	1,304.9	2,363.6	2.20	-1.63	
8,215.0	8.80	28.30	7,828.8	1,983.9	1,312.2	2,378.5	1.55	-1.54	
8,307.0	6.90	33.80	7,919.9	1,994.7	1,318.6	2,391.1	2.22	-2.07	
8,399.0	4.60	31.30	8,011.4	2,002.4	1,323.6	2,400.3	2.51	-2.50	
8,491.0	2.30	29.40	8,103.3	2,007.2	1,326.4	2,405.8	2.50	-2.50	
8,583.0	1.60	21.30	8,195.2	2,010.0	1,327.8	2,408.9	0.82	-0.76	
8,675.0	1.50	21.50	8,287.2	2,012.3	1,328.7	2,411.4	0.11	-0.11	
8,765.0	1.10	10.80	8,377.2	2,014.2	1,329.3	2,413.3	0.52	-0.44	
8,856.0	1.10	308.20	8,468.1	2,015.6	1,328.8	2,414.2	1.26	0.00	
8,947.0	1.00	289.80	8,559.1	2,016.4	1,327.3	2,414.1	0.38	-0.11	
9,039.0	1.10	291.20	8,651.1	2,017.0	1,325.8	2,413.7	0.11	0.11	
9,131.0	0.20	293.00	8,743.1	2,017.4	1,324.8	2,413.5	0.98	-0.98	
9,222.0	1.40	9.00	8,834.1	2,018.6	1,324.8	2,414.5	1.50	1.32	
9,314.0	1.20	27.00	8,926.1	2,020.5	1,325.4	2,416.5	0.49	-0.22	
9,405.0	0.40	1.30	9,017.1	2,021.7	1,325.9	2,417.7	0.94	-0.88	
9,497.0	0.40	337.10	9,109.1	2,022.3	1,325.8	2,418.1	0.18	0.00	
9,588.0	0.40	253.20	9,200.1	2,022.5	1,325.3	2,418.1	0.59	0.00	
9,680.0	0.50	230.30	9,292.1	2,022.2	1,324.7	2,417.4	0.22	0.11	
9,771.0	0.80	200.90	9,383.1	2,021.3	1,324.2	2,416.4	0.48	0.33	
9,863.0	1.20	194.90	9,475.1	2,019.8	1,323.7	2,414.9	0.45	0.43	
9,954.0	1.20	175.90	9,566.0	2,017.9	1,323.5	2,413.2	0.44	0.00	
10,046.0	1.00	165.40	9,658.0	2,016.2	1,323.8	2,411.9	0.31	-0.22	
10,137.0	0.60	122.80	9,749.0	2,015.2	1,324.4	2,411.4	0.76	-0.44	
10,231.0	0.70	160.40	9,843.0	2,014.4	1,325.0	2,411.1	0.46	0.11	
10,322.0	1.00	92.20	9,934.0	2,013.8	1,326.0	2,411.1	1.08	0.33	
10,414.0	1.10	108.00	10,026.0	2,013.5	1,327.6	2,411.8	0.33	0.11	
10,505.0	0.50	115.90	10,117.0	2,013.1	1,328.8	2,412.1	0.67	-0.66	

# Cathedral Energy Services

## Survey Report

<b>Company:</b> EnCana Oil & Gas (USA) Inc	<b>Local Co-ordinate Reference:</b> Well SGU 8502C-25 (was 1A)
<b>Project:</b> Story Gulch	<b>TVD Reference:</b> KBE @ 8320.0ft (Patterosn 306)
<b>Site:</b> F25 496	<b>MD Reference:</b> KBE @ 8320.0ft (Patterosn 306)
<b>Well:</b> SGU 8502C-25 (was 1A)	<b>North Reference:</b> True
<b>Wellbore:</b> DD	<b>Survey Calculation Method:</b> Minimum Curvature
<b>Design:</b> DD	<b>Database:</b> USA EDM 5000 Multi Users DB

Survey									
Measured Depth (ft)	Inclination (°)	Azimuth (°)	Vertical Depth (ft)	+N/-S (ft)	+E/-W (ft)	Vertical Section (ft)	Dogleg Rate (°/100ft)	Build Rate (°/100ft)	Formations / Comments
10,597.0	0.90	75.70	10,209.0	2,013.1	1,329.9	2,412.6	0.66	0.43	
10,688.0	0.80	58.40	10,300.0	2,013.6	1,331.1	2,413.7	0.30	-0.11	
10,780.0	0.30	195.70	10,392.0	2,013.7	1,331.6	2,414.1	1.13	-0.54	
10,871.0	1.30	50.40	10,482.9	2,014.1	1,332.3	2,414.8	1.71	1.10	
10,963.0	0.70	24.30	10,574.9	2,015.3	1,333.4	2,416.4	0.80	-0.65	
11,054.0	0.20	100.40	10,665.9	2,015.8	1,333.7	2,417.0	0.75	-0.55	
11,146.0	0.40	180.20	10,757.9	2,015.4	1,333.9	2,416.8	0.45	0.22	
11,237.0	0.50	200.60	10,848.9	2,014.7	1,333.8	2,416.1	0.21	0.11	
11,329.0	1.00	200.80	10,940.9	2,013.6	1,333.3	2,415.0	0.54	0.54	
11,421.0	0.50	51.80	11,032.9	2,013.1	1,333.4	2,414.6	1.58	-0.54	
11,512.0	0.70	21.70	11,123.9	2,013.8	1,333.9	2,415.5	0.40	0.22	
11,604.0	0.40	0.70	11,215.9	2,014.7	1,334.1	2,416.3	0.39	-0.33	
11,695.0	0.20	231.00	11,306.9	2,014.9	1,334.0	2,416.4	0.60	-0.22	
11,787.0	0.50	288.70	11,398.9	2,014.9	1,333.5	2,416.2	0.47	0.33	
11,878.0	0.80	240.90	11,489.9	2,014.8	1,332.5	2,415.5	0.65	0.33	
11,970.0	0.80	231.90	11,581.9	2,014.0	1,331.5	2,414.3	0.14	0.00	
12,061.0	0.70	219.60	11,672.9	2,013.2	1,330.6	2,413.2	0.21	-0.11	
12,153.0	0.80	192.30	11,764.9	2,012.2	1,330.1	2,412.0	0.40	0.11	
12,244.0	1.40	214.00	11,855.9	2,010.6	1,329.4	2,410.3	0.79	0.66	
12,336.0	1.80	220.80	11,947.8	2,008.6	1,327.8	2,407.8	0.48	0.43	
12,427.0	2.30	219.90	12,038.8	2,006.1	1,325.7	2,404.5	0.55	0.55	
12,519.0	2.20	206.10	12,130.7	2,003.1	1,323.7	2,400.9	0.60	-0.11	
12,610.0	2.10	200.10	12,221.6	2,000.0	1,322.4	2,397.6	0.27	-0.11	
12,702.0	1.90	165.80	12,313.6	1,996.9	1,322.2	2,394.9	1.30	-0.22	
12,773.0	1.70	170.80	12,384.5	1,994.7	1,322.6	2,393.3	0.36	-0.28	Last Cathedral Survey @ 12,773' MD
12,838.0	1.70	170.80	12,449.5	1,992.8	1,322.9	2,391.9	0.00	0.00	Projection to Bit @ 12,838'

Targets									
Target Name	Dip Angle (°)	Dip Dir. (°)	TVD (ft)	+N/-S (ft)	+E/-W (ft)	Northing (ft)	Easting (ft)	Latitude	Longitude
F25 496 SGU 8502C-25 - hit/miss target - Shape	0.00	0.00	12,355.0	2,009.7	1,313.1	1,683,156.14	2,264,175.14	39° 40' 47.94 N	108° 6' 52.80 W
- actual wellpath misses target center by 16.9ft at 12743.0ft MD (12354.5 TVD, 1995.6 N, 1322.5 E)									
- Rectangle (sides W30.0 H50.0 D0.0)									
F25 496 SGU 8502C-25 - hit/miss target - Shape	0.00	0.00	8,195.0	2,019.7	1,331.1	1,683,165.65	2,264,193.40	39° 40' 48.04 N	108° 6' 52.57 W
- actual wellpath misses target center by 10.3ft at 8583.1ft MD (8195.3 TVD, 2010.0 N, 1327.8 E)									
- Point									

Design Annotations					
Measured Depth (ft)	Vertical Depth (ft)	+N/-S (ft)	+E/-W (ft)	Comment	
2,957.0	2,838.2	625.2	410.1	Last Cathedral Survey @ 2,957' MD	
12,773.0	12,384.5	1,994.7	1,322.6	Last Cathedral Survey @ 12,773' MD	
12,838.0	12,449.5	1,992.8	1,322.9	Projection to Bit @ 12,838'	

Checked By: \_\_\_\_\_ Approved By: \_\_\_\_\_ Date: \_\_\_\_\_