

---

**WILLIAMS PRODUCTION RMT INC - EBUS**

---

**PA 33-20  
Parachute  
Garfield County , Colorado**

**Cement Surface Casing**  
**13-Aug-2011**

**Post Job Summary**

*The Road to Excellence Starts with Safety*

<b>Sold To #:</b> 300721	<b>Ship To #:</b> 2867305	<b>Quote #:</b>	<b>Sales Order #:</b> 8371163
<b>Customer:</b> WILLIAMS PRODUCTION RMT INC - EBUS		<b>Customer Rep:</b> Harrison, Jeremy	
<b>Well Name:</b> PA		<b>Well #:</b> 33-20	<b>API/UWI #:</b> 05-045-20254
<b>Field:</b> Parachute	<b>City (SAP):</b> PARACHUTE	<b>County/Parish:</b> Garfield	<b>State:</b> Colorado
<b>Lat:</b> N 39.504 deg. OR N 39 deg. 30 min. 14.558 secs.		<b>Long:</b> W 108.019 deg. OR W -109 deg. 58 min. 51.33 secs.	
<b>Contractor:</b> NABORS 577		<b>Rig/Platform Name/Num:</b> NABORS 577	
<b>Job Purpose:</b> Cement Surface Casing			
<b>Well Type:</b> Development Well		<b>Job Type:</b> Cement Surface Casing	
<b>Sales Person:</b> KOHL, KYLE		<b>Srvc Supervisor:</b> HUGENTOBLE, LOGAN	<b>MBU ID Emp #:</b> 447333

**Job Personnel**

HES Emp Name	Exp Hrs	Emp #	HES Emp Name	Exp Hrs	Emp #	HES Emp Name	Exp Hrs	Emp #
COSTELDIA, BROCK James	9	476115	HUGENTOBLE, LOGAN Mark	9	447333	SIMINEO, JEROD M	9	479954
WALPOLE, DARREN Livingston	9	485294						

**Equipment**

HES Unit #	Distance-1 way	HES Unit #	Distance-1 way	HES Unit #	Distance-1 way	HES Unit #	Distance-1 way
10867304	60 mile	10951247	60 mile	10998054	60 mile	11560046	60 mile
11562538	60 mile						

**Job Hours**

Date	On Location Hours	Operating Hours	Date	On Location Hours	Operating Hours	Date	On Location Hours	Operating Hours
8/12/11	4	0	8/13/11	5	2			

**TOTAL** Total is the sum of each column separately

**Job**

**Job Times**

Formation Name	Top	Bottom	Called Out	Date	Time	Time Zone
<b>Formation Depth (MD)</b>			<b>On Location</b>	12 - Aug - 2011	16:00	MST
<b>Form Type</b>		BHST	<b>Job Started</b>	12 - Aug - 2011	20:00	MST
<b>Job depth MD</b>	1032. ft	<b>Job Depth TVD</b>	1032. ft	<b>Job Completed</b>	13 - Aug - 2011	01:48
<b>Water Depth</b>		<b>Wk Ht Above Floor</b>	4. ft	<b>Departed Loc</b>	13 - Aug - 2011	02:55
<b>Perforation Depth (MD)</b>	<i>From</i>	<i>To</i>			13 - Aug - 2011	05:00

**Well Data**

Description	New / Used	Max pressure psig	Size in	ID in	Weight lbm/ft	Thread	Grade	Top MD ft	Bottom MD ft	Top TVD ft	Bottom TVD ft
<b>Sales/Rental/3<sup>rd</sup> Party (HES)</b>											

Description	Qty	Qty uom	Depth	Supplier
PLUG,CMTG, TOP, 9 5/8, HWE, 8.16 MIN/9.06 MA	1	EA		

**Tools and Accessories**

Type	Size	Qty	Make	Depth	Type	Size	Qty	Make	Depth	Type	Size	Qty	Make
Guide Shoe					Packer					Top Plug	9.625	1	HES
Float Shoe					Bridge Plug					Bottom Plug			
Float Collar					Retainer					SSR plug set			
Insert Float										Plug Container	9.625	1	HES
Stage Tool										Centralizers			

**Miscellaneous Materials**

Gelling Agt	Conc	Surfactant	Conc	Acid Type	Qty	Conc %
Treatment Fld	Conc	Inhibitor	Conc	Sand Type	Size	Qty

**Fluid Data**

Stage/Plug #: 1										
Fluid #	Stage Type	Fluid Name	Qty	Qty uom	Mixing Density lbm/gal	Yield ft <sup>3</sup> /sk	Mix Fluid Gal/sk	Rate bbl/min	Total Mix Fluid Gal/sk	

1	Water Spacer		20.00	bbl	8.34	.0	.0	6	
2	VersaCem Tail	VERSACEM (TM) SYSTEM (452010)	310.0	sacks	12.8	2.11	13.75	8	13.75
	13.75 Gal	FRESH WATER							
3	Displacement Fluid		77.00	bbl	8.34	.0	.0	8	
Calculated Values		Pressures		Volumes					
Displacement	77	Shut In: Instant		Lost Returns	0	Cement Slurry	116	Pad	
Top Of Cement	SURFACE	5 Min		Cement Returns	30	Actual Displacement	77	Treatment	
Frac Gradient		15 Min		Spacers	20	Load and Breakdown		Total Job	
Rates									
Circulating		Mixing	8	Displacement	8	Avg. Job		8	
Cement Left In Pipe	Amount	43 ft	Reason	Shoe Joint					
Frac Ring # 1 @	ID	Frac ring # 2 @	ID	Frac Ring # 3 @	ID	Frac Ring # 4 @	ID		
The Information Stated Herein Is Correct				Customer Representative Signature					

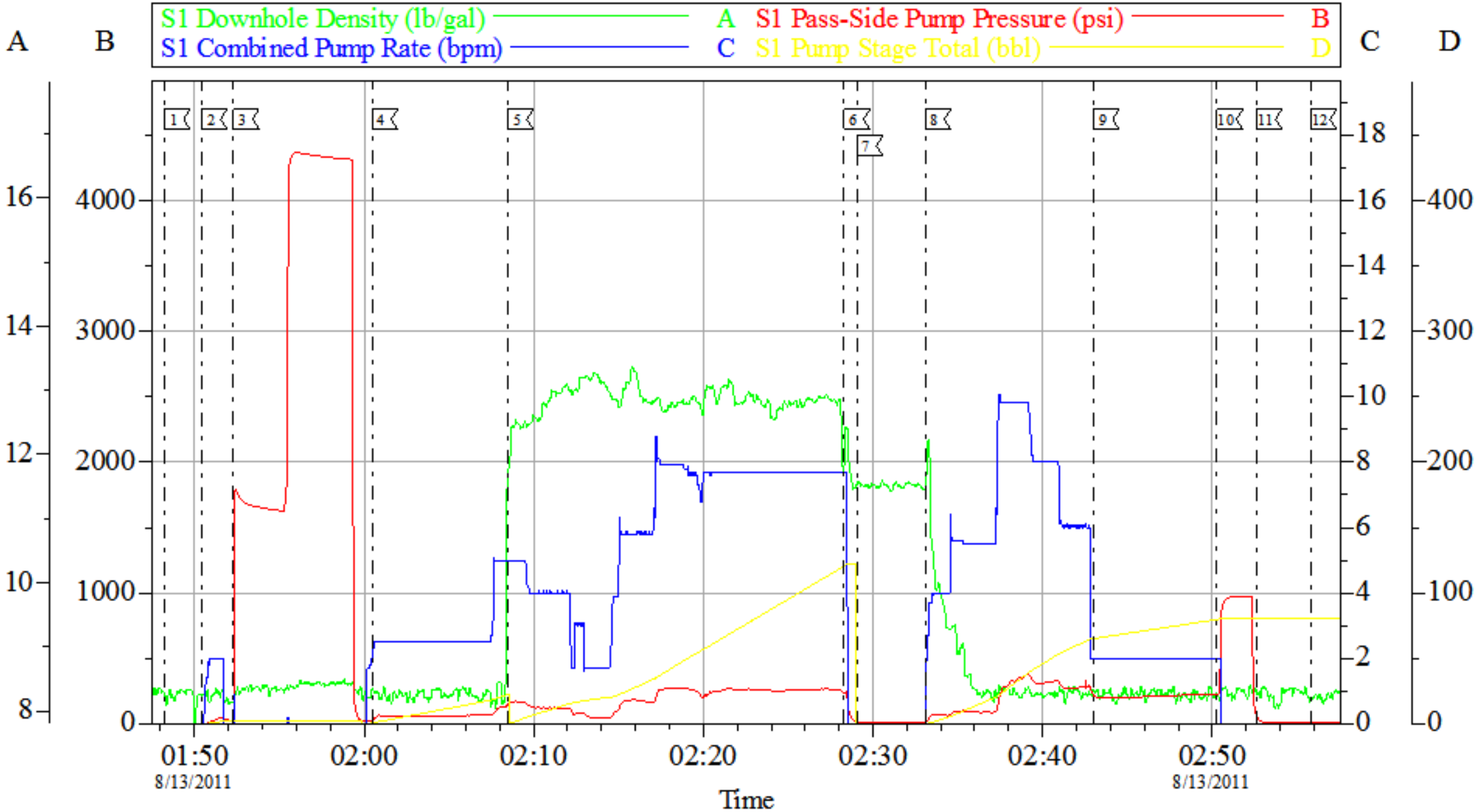
*The Road to Excellence Starts with Safety*

<b>Sold To #:</b> 300721	<b>Ship To #:</b> 2867305	<b>Quote #:</b>	<b>Sales Order #:</b> 8371163
<b>Customer:</b> WILLIAMS PRODUCTION RMT INC - EBUS		<b>Customer Rep:</b> Harrison, Jeremy	
<b>Well Name:</b> PA		<b>Well #:</b> 33-20	<b>API/UWI #:</b> 05-045-20254
<b>Field:</b> Parachute	<b>City (SAP):</b> PARACHUTE	<b>County/Parish:</b> Garfield	<b>State:</b> Colorado
<b>Legal Description:</b>			
<b>Lat:</b> N 39.504 deg. OR N 39 deg. 30 min. 14.558 secs.		<b>Long:</b> W 108.019 deg. OR W -109 deg. 58 min. 51.33 secs.	
<b>Contractor:</b> NABORS 577		<b>Rig/Platform Name/Num:</b> NABORS 577	
<b>Job Purpose:</b> Cement Surface Casing			<b>Ticket Amount:</b>
<b>Well Type:</b> Development Well		<b>Job Type:</b> Cement Surface Casing	
<b>Sales Person:</b> KOHL, KYLE		<b>Srvc Supervisor:</b> HUGENTOBLER, LOGAN	<b>MBU ID Emp #:</b> 447333

Activity Description	Date/Time	Cht #	Rate bbl/min	Volume bbl		Pressure psig		Comments
				Stage	Total	Tubing	Casing	
Call Out	08/12/2011 16:00							
Pre-Convoy Safety Meeting	08/12/2011 20:00							ALL HES EMPLOYEES
Arrive At Loc	08/12/2011 22:00							RIG STILL RUNNING CASING
Assessment Of Location Safety Meeting	08/12/2011 23:00							ALL HES EMPLOYEES
Rig-Up Equipment	08/12/2011 23:15							1 HT-400 PUMP TRUCK, 1 660 BULK TRUCK, 1 F-450 P/U, 1 QUICK LATCH PLUG CONTAINER, 1 BAIL BASKET & SWAGE
Pre-Job Safety Meeting	08/13/2011 01:30							ALL HES EMPLOYEES, RIG CREW, CO REP AND ANY 3RD PARTY VENDORS
Start Job	08/13/2011 01:48							TP 1025 FT, TD 1032 FT, FC 982 FT, HOLE 13.5", MUD WT 10 PPG, RATE WILL BE 8-10-2, WILL BUMP 500 PSI OVER LAND PSI, RIG CIRCULATED HOLE FOR 1 HRS. .
Pump Water	08/13/2011 01:50		2	2			29.0	FILL LINES PRIOR TO PRESSURE TESTING LINES
Pressure Test	08/13/2011 01:52							NO LEAKS, KICK OUTS SET TO 3000 PSI FOR TEST.
Pump Spacer 1	08/13/2011 02:00		6	20			58.0	FRESH WATER

Activity Description	Date/Time	Cht #	Rate bbl/min	Volume bbl		Pressure psig		Comments
				Stage	Total	Tubing	Casing	
Pump Tail Cement	08/13/2011 02:08		8	116			179.0	310 SKS VERSACEM CMT TO BE MUIXED AT 12.8 PPG, 2.11 YIELD, 11.75 GAL/SK, CMT TO BE WEIGHED VIA PRESSURE BALANCED MUD SCALES, WET AND DRY SAMPLES SUBMITTED,
Shutdown	08/13/2011 02:28							
Drop Plug	08/13/2011 02:29							PLUG LAUNCHED
Pump Displacement	08/13/2011 02:33		8	77			311.0	FRESH WATER, 30 BBLS CEMENT TO SURFACE
Slow Rate	08/13/2011 02:43		2				260.0	10 BBLS PRIOR TO CALCULATED DISPLACEMENT
Bump Plug	08/13/2011 02:50						901.0	PLUG LANDED
Check Floats	08/13/2011 02:52							FLOATS HOLDING
End Job	08/13/2011 02:55							THANK YOU FOR USING HES FROM LOGAN HUGENTOBLE AND CREW
Post-Job Safety Meeting (Pre Rig-Down)	08/13/2011 03:00							ALL HES EMPLOYEES
Rig-Down Equipment	08/13/2011 03:10							
Pre-Convoy Safety Meeting	08/13/2011 04:55							ALL HES EMPLOYEES
Crew Leave Location	08/13/2011 05:00							LOCATION CLEAN

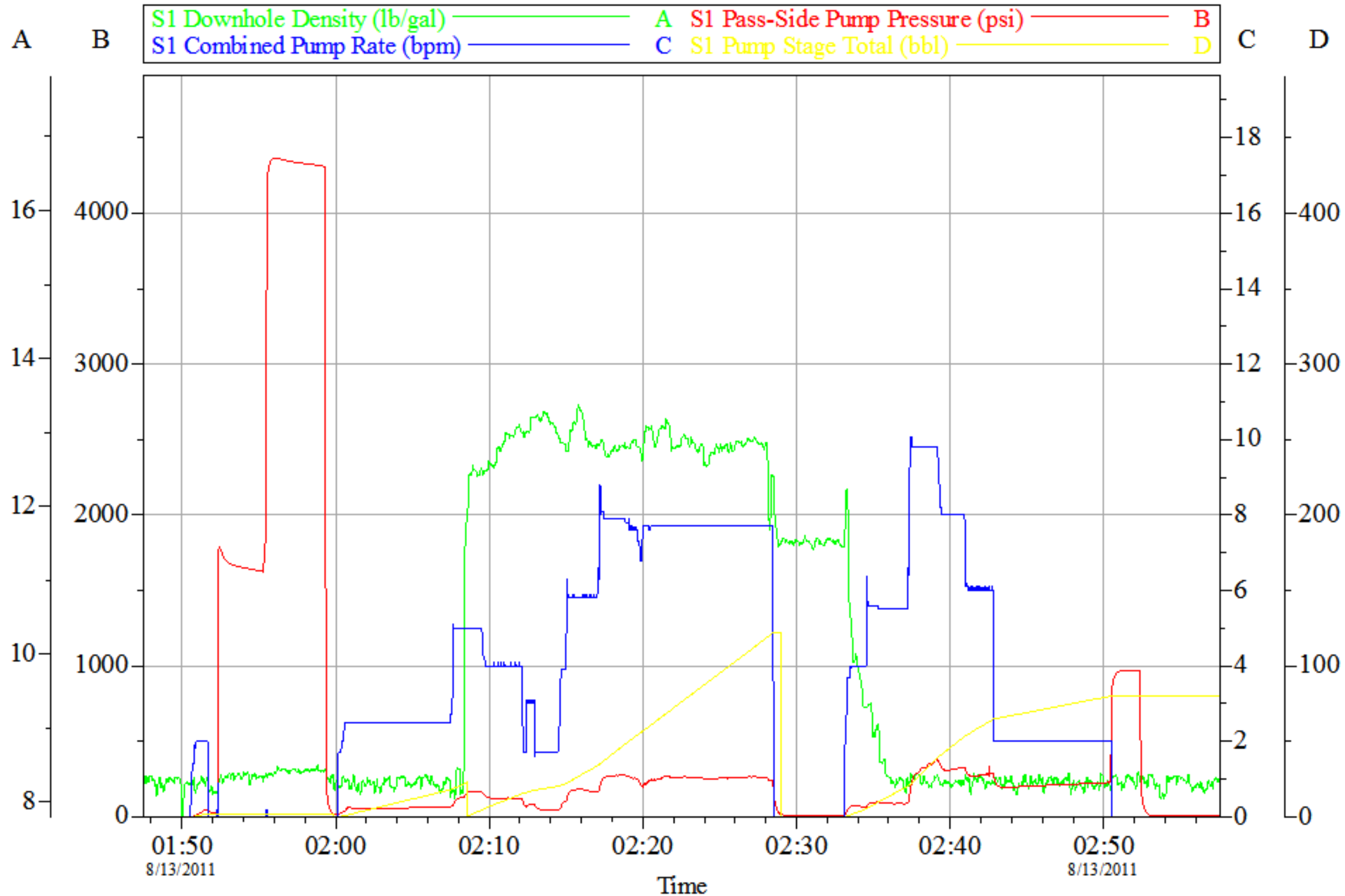
# WILLIAMS 9.625 SURFACE



Local Event Log								
1	START JOB	01:48:13	2	PRIME LINES	01:50:24	3	PRESSURE TEST	01:52:17
4	PUMP H2O SPACER	02:00:28	5	PUMP TAIL CEMENT	02:08:28	6	SHUTDOWN	02:28:18
7	DROP PLUG	02:29:04	8	PUMP DISPLACEMENT	02:33:05	9	SLOW RATE	02:43:00
10	BUMP PLUG	02:50:17	11	CHECK FLOATS	02:52:36	12	END JOB	02:55:49

Customer: WILLIAMS	Job Date: 13-Aug-2011	Sales Order #: 8371163
Well Description: PA 33-20	Job Type: SURFACE	ADC Used: YES
Company Rep: JEREMY HARRISON	Cement Supervisor: LOGAN HUGENTOBLER	Elite # 5/ Operator: BROCK CASTELDIA

# WILLIAMS 9.625 SURFACE



Customer: WILLIAMS	Job Date: 13-Aug-2011	Sales Order #: 8371163
Well Description: PA 33-20	Job Type: SURFACE	ADC Used: YES
Company Rep: JEREMY HARRISON	Cement Supervisor: LOGAN HUGENTOBLER	Elite # 5/ Operator: BROCK CASTELDIA

<b>Sales Order #:</b> 8371163	<b>Line Item:</b> 10	<b>Survey Conducted Date:</b> 8/13/2011
<b>Customer:</b> WILLIAMS PRODUCTION RMT INC - EBUS		<b>Job Type (BOM):</b> CMT SURFACE CASING BOM
<b>Customer Representative:</b> JEREMY HARRISON		<b>API / UWI: (leave blank if unknown)</b> 05-045-20254
<b>Well Name:</b> PA		<b>Well Number:</b> 33-20
<b>Well Type:</b> Development Well	<b>Well Country:</b> United States of America	
<b>H2S Present:</b> No	<b>Well State:</b> Colorado	<b>Well County:</b> Garfield

Dear Customer,

We hope that you were satisfied with the service quality of this job performed by Halliburton. It is the aim of our management and service personnel to deliver equipment and service of a standard unmatched in the service sector of the energy industry.

Please take the time to let us know if our performance met with your satisfaction. Please be as critical as possible to ensure we constantly improve our service. Your comments are of great value to us and are intended for the exclusive use of Halliburton.

### CUSTOMER SATISFACTION SURVEY

CATEGORY	CUSTOMER SATISFACTION RESPONSE	
Survey Conducted Date	The date the survey was conducted	8/13/2011
Survey Interviewer	The survey interviewer is the person who initiated the survey.	LOGAN HUGENTOBLER (HB15210)
Customer Participation	Did the customer participate in this survey? (Y/N)	Yes
Customer Representative	Enter the Customer representative name	JEREMY HARRISON
HSE	Was our HSE performance satisfactory? Circle Y or N	Yes
Equipment	Were you satisfied with our Equipment? Circle Y or N	Yes
Personnel	Were you satisfied with our people? Circle Y or N	Yes
Customer Comment	Customer's Comment	
Job DVA	Did we provide job DVA above our normal service today? Circle Y or N	No
Time	Please enter hours in decimal format to nearest quarter hour.	
Other	Enter short text for other efficiencies gained.	
Customer Initials	Customer's Initials	
Please provide details	Please describe how the job efficiencies were gained.	

<b>CUSTOMER SIGNATURE</b>
---------------------------

<b>Sales Order #:</b> 8371163	<b>Line Item:</b> 10	<b>Survey Conducted Date:</b> 8/13/2011
<b>Customer:</b> WILLIAMS PRODUCTION RMT INC - EBUS		<b>Job Type (BOM):</b> CMT SURFACE CASING BOM
<b>Customer Representative:</b> JEREMY HARRISON		<b>API / UWI: (leave blank if unknown)</b> 05-045-20254
<b>Well Name:</b> PA		<b>Well Number:</b> 33-20
<b>Well Type:</b> Development Well	<b>Well Country:</b> United States of America	
<b>H2S Present:</b> No	<b>Well State:</b> Colorado	<b>Well County:</b> Garfield

### KEY PERFORMANCE INDICATORS

General	
<b>Survey Conducted Date</b>	8/13/2011
The date the survey was conducted	

Cementing KPI Survey	
<b>Type of Job</b>	0
Select the type of job. (Cementing or Non-Cementing)	
<b>Select the Maximum Deviation range for this Job</b>	Vertical
What is the highest deviation for the job you just completed? This may not be the maximum well deviation.	
<b>Total Operating Time (hours)</b>	6
Total Operating Hours Including Rig-up, Pumping, Rig-down. Enter in decimal format.	
<b>HSE Incident, Accident, Injury</b>	No
HSE Incident, Accident, Injury. This should be recordable incidents only.	
<b>Was the job purpose achieved?</b>	Yes
Was the job delivered correctly as per customer agreed design?	
<b>Operating Hours (Pumping Hours)</b>	2
Total number of hours pumping fluid on this job. Enter in decimal format.	
<b>Customer Non-Productive Rig Time (hrs)</b>	0
Lost time due to Halliburton in the start, execution, or completion of an ordered service or product, or delays in a follow-on service. Enter in decimal format. 0 if none.	
<b>Type of Rig Classification Job Was Performed</b>	Drilling Rig (Portable)
Type Of Rig (classification) Job Was Performed On	
<b>Number Of JSAs Performed</b>	6
Number Of Jsas Performed	
<b>Number of Unplanned Shutdowns</b>	0
Unplanned shutdown is when injection stops for any period of time.	
<b>Was this a Primary Cement Job (Yes / No)</b>	Yes

<b>Sales Order #:</b> 8371163	<b>Line Item:</b> 10	<b>Survey Conducted Date:</b> 8/13/2011
<b>Customer:</b> WILLIAMS PRODUCTION RMT INC - EBUS		<b>Job Type (BOM):</b> CMT SURFACE CASING BOM
<b>Customer Representative:</b> JEREMY HARRISON		<b>API / UWI: (leave blank if unknown)</b> 05-045-20254
<b>Well Name:</b> PA		<b>Well Number:</b> 33-20
<b>Well Type:</b> Development Well	<b>Well Country:</b> United States of America	
<b>H2S Present:</b> No	<b>Well State:</b> Colorado	<b>Well County:</b> Garfield

Primary Cement Job= Casing job, Liner job, or Tie-back job.	
<b>Did We Run Wiper Plugs?</b> Did We Run Top And Bottom Casing Wiper Plugs?	Top
<b>Mixing Density of Job Stayed in Designed Density Range (0-100%)</b> Density Range defined as +/- .20 ppg. Calculation: Total BBLs cement mixed at designed density divided by total BBLs of cement multiplied by 100	98
<b>Was Automated Density Control Used?</b> Was Automated Density Control (ADC) Used ?	Yes
<b>Pump Rate (percent) of Job Stayed At Designed Pump Rate</b> Pump Rate range defined as +/- 1bbl/min. Calculation: Total BBLs of fluid pumped at the designed rate divided by Total BBLs of fluid pumped, multiplied by 100	98
<b>Nbr of Remedial Sqz Jobs Rqd - Competition</b> Number Of Remedial Squeeze Jobs Required After Primary Job Performed By Competition	0
<b>Nbr of Remedial Plug Jobs Rqd - HES</b> Number Of Remedial Plug Jobs Needed After Primary Plug Pumped By HES	0
<b>Nbr of Remedial Sqz Jobs Rqd - HES</b> Number Of Remedial Squeeze Jobs Required After Primary Job Performed By HES	0