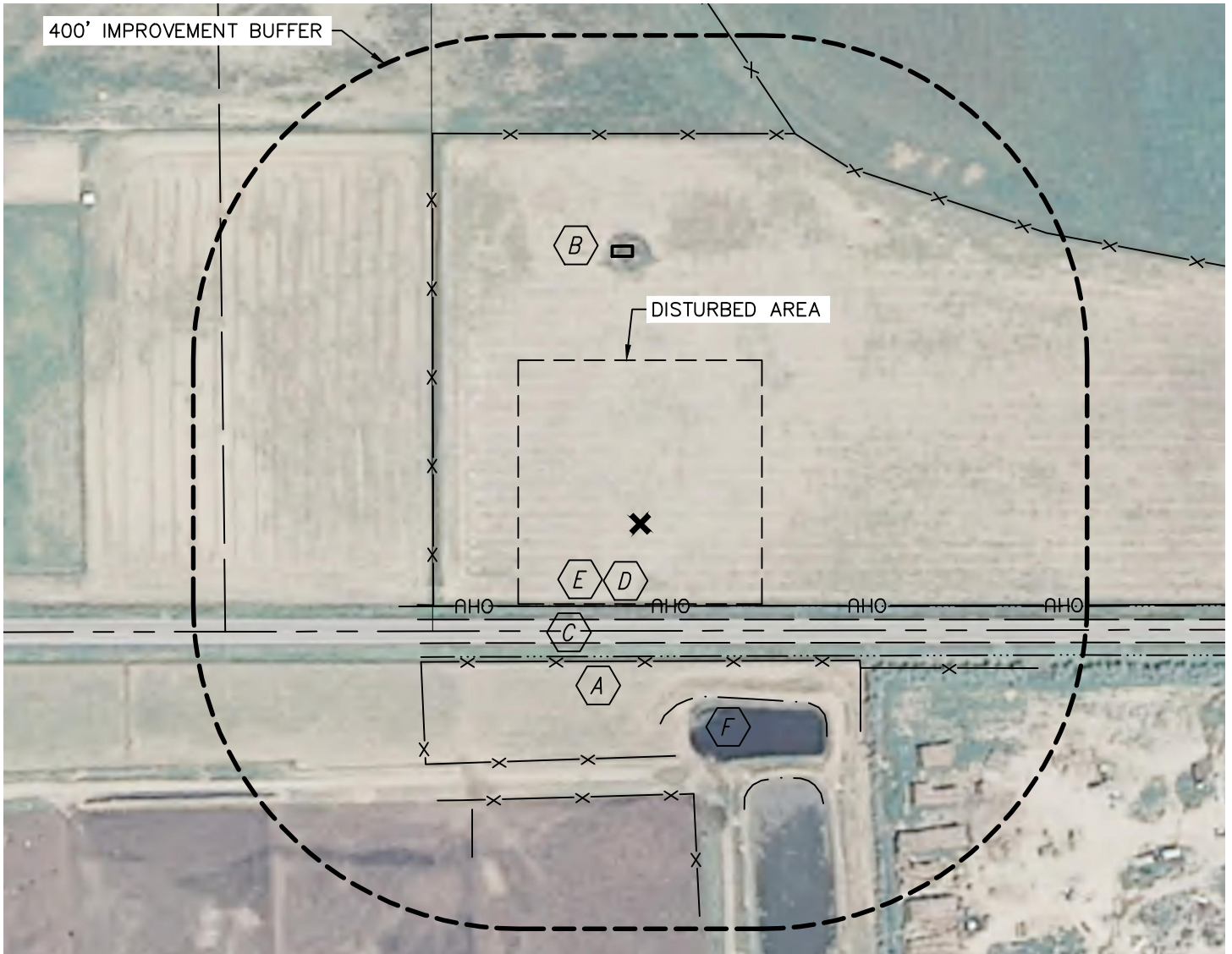




PRODUCTION FACILITY LOCATION DRAWING

SECTION: 34
TOWNSHIP: 5N
RANGE: 68W

MURDOCK 24-34 PAD



REFERENCE POINT LOCATION:

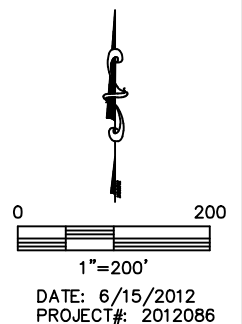
LAT: 40.34958°N
 LONG: 104.99585°W
 ELEV: 5081'
 PDOP: 1.5
 DATE: 6/13/2012
 OPERATOR: ADAM KELLY
 1/41/4: SE1/4SW1/4
 FSL: 132'
 FEL: 1833'
 DISTANCE TO WELL: 674'
 ASSOCIATED NEW WELLS:
 MURDOCK 24-34, 35-34D,
 34SW-BL, 13-34D, 23-34D
 ASSOCIATED EXISTING WELLS:
 NONE

IMPROVEMENTS:

- A** FENCE 169' S, 287' S, 334' S, 255' W 480' N & 508' NE
- B** SHED 329' N
- C** EAST COUNTY ROAD 14/HIGHWAY 60 118' S
- D** OVERHEAD UTILITY LINE 101' S
- E** BARROW DITCH 101' S, 163' S
- F** POND 225' SE & 349' SE

LEGEND
X - REFERENCE POINT
 ALL DISTANCES ARE APPROXIMATE.

NEAREST: BUILDING 688' S,
 PUBLIC ROAD 118' S (E CR 14/HWY60), ABOVE GROUND UTILITY 101' S,
 RAILROAD 5280'+, PROPERTY LINE 132' S



DATE: 6/15/2012
 PROJECT#: 2012086