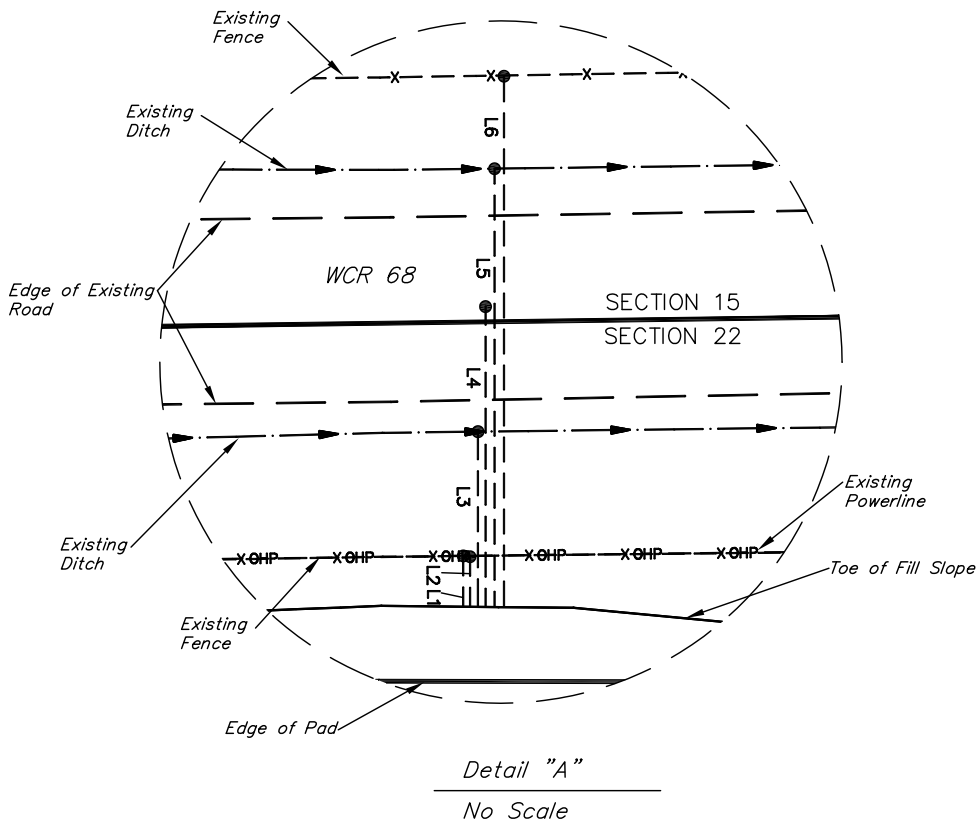
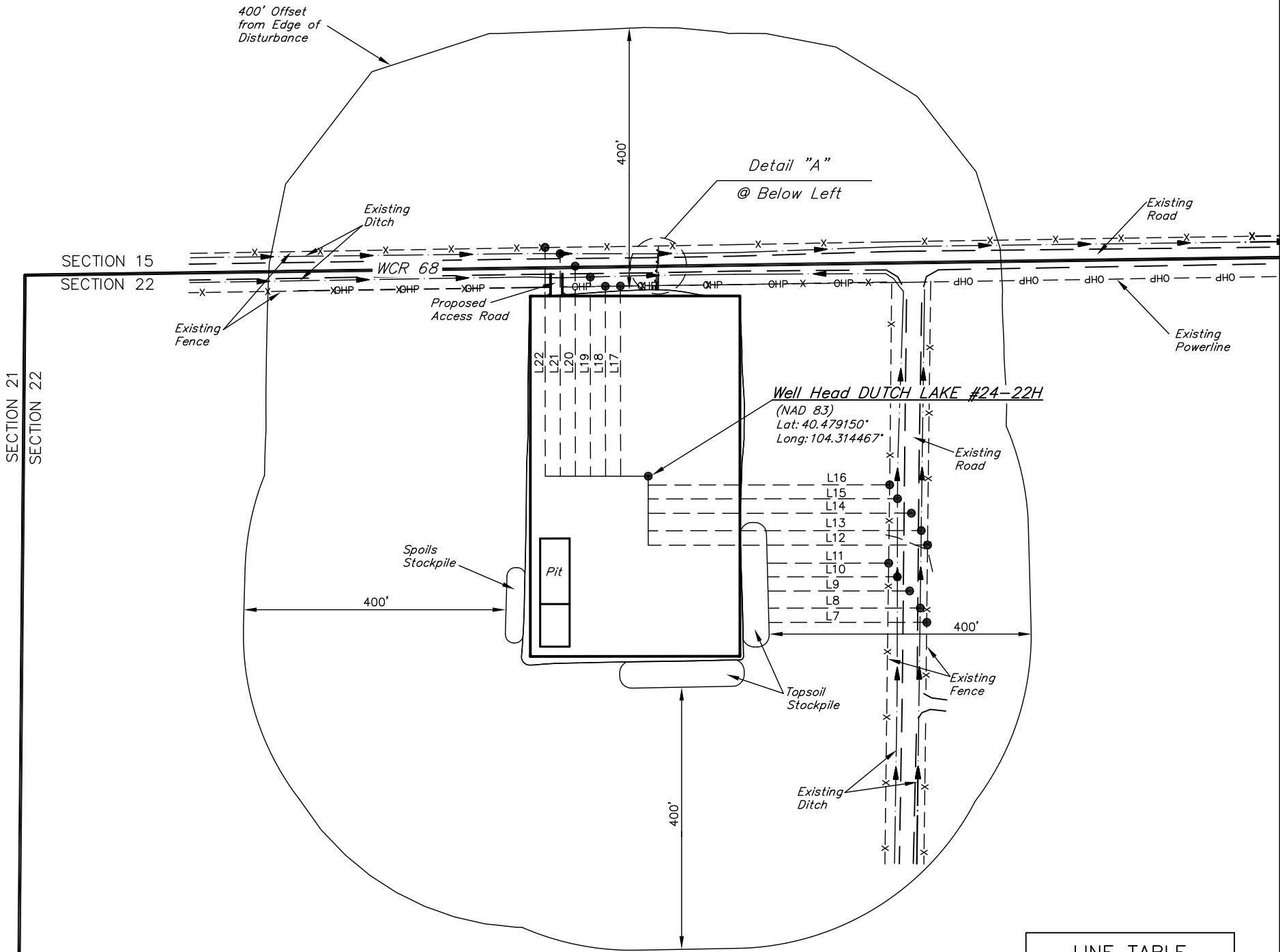




EOG RESOURCES, INC.  
ADDENDUM TO LEGAL PLAT FOR  
DUTCH LAKE #24-22H  
SECTION 22, T6N, R62W, 6th P.M.  
320' FNL 954' FWL

SCALE: 1" = 200'  
DATE: 06-04-12  
DRAWN BY: S.R.L.

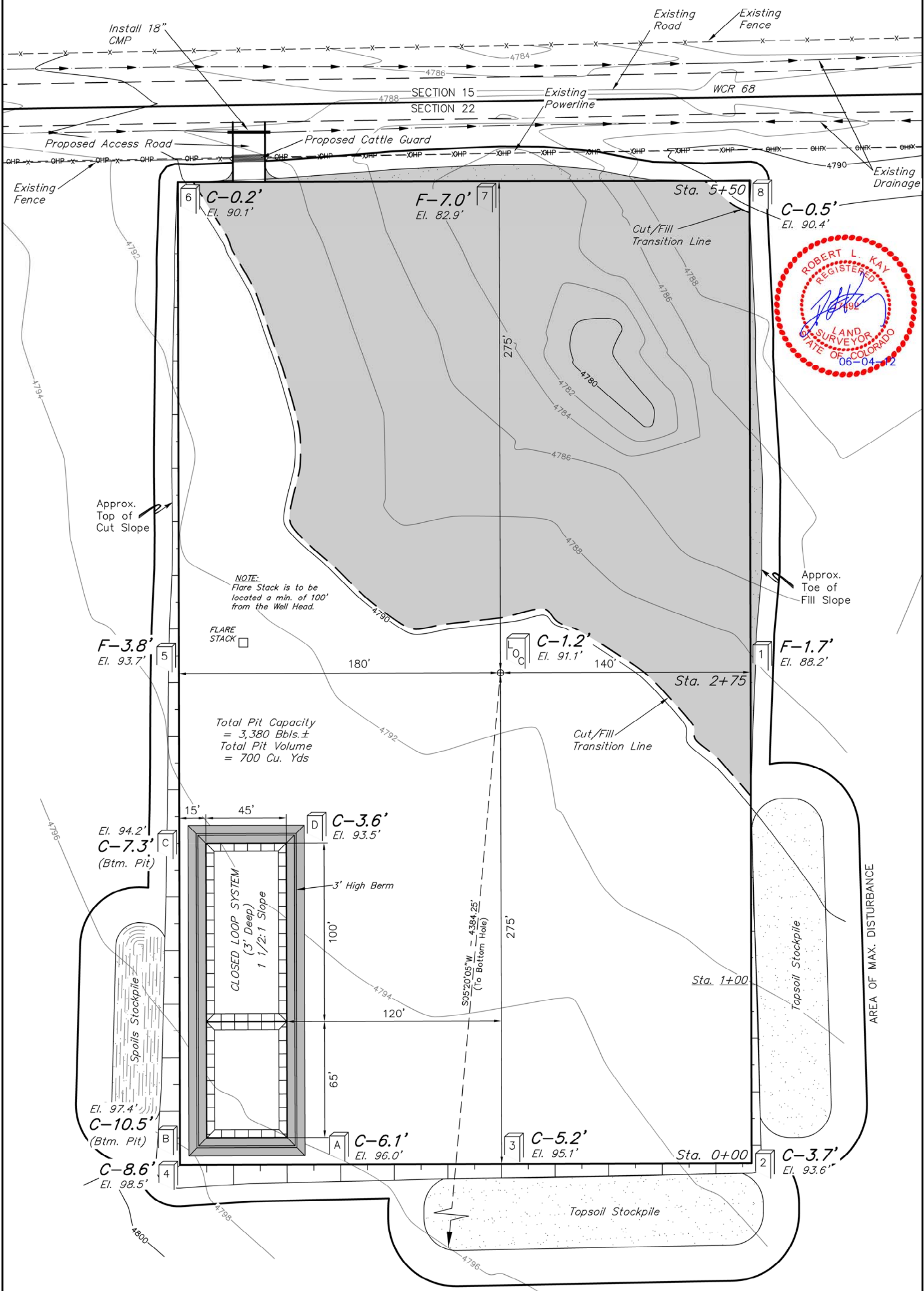


LINE TABLE		
LINE	DIRECTION	LENGTH
L1	NORTH	6.40'
L2	NORTH	6.30'
L3	NORTH	22.04'
L4	NORTH	37.79'
L5	NORTH	55.14'
L6	NORTH	66.78'
L7	EAST	241'
L8	EAST	232'
L9	EAST	216'
L10	EAST	198'
L11	EAST	185'
L12	EAST	426'
L13	EAST	417'
L14	EAST	402'
L15	EAST	381'
L16	EAST	369'
L17	NORTH	290'
L18	NORTH	290'
L19	NORTH	304'
L20	NORTH	321'
L21	NORTH	340'
L22	NORTH	349'

EOG RESOURCES, INC.  
CONSTRUCTION LAYOUT FOR  
DUTCH LAKE #24-22H  
SECTION 22, T6N, R62W, 6th P.M.  
320' FNL 954' FWL

FIGURE #1

SCALE: 1" = 50'  
DATE: 06-04-12  
DRAWN BY: S.R.L.



Elev. Ungraded Ground At Loc. Stake = 4791.1'  
FINISHED GRADE ELEV. AT LOC. STAKE = 4789.9'

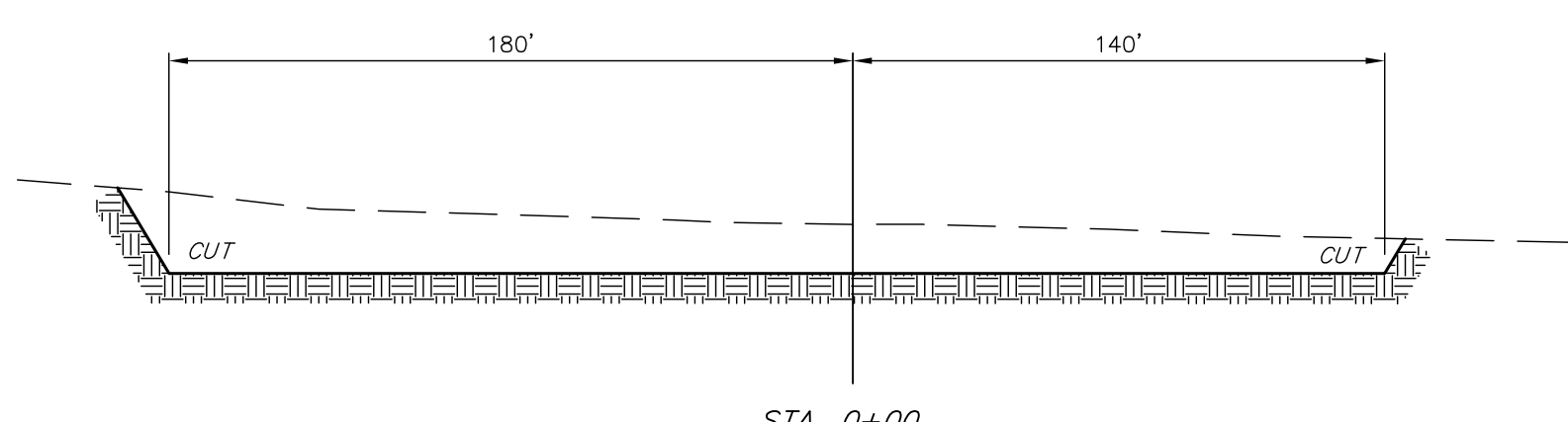
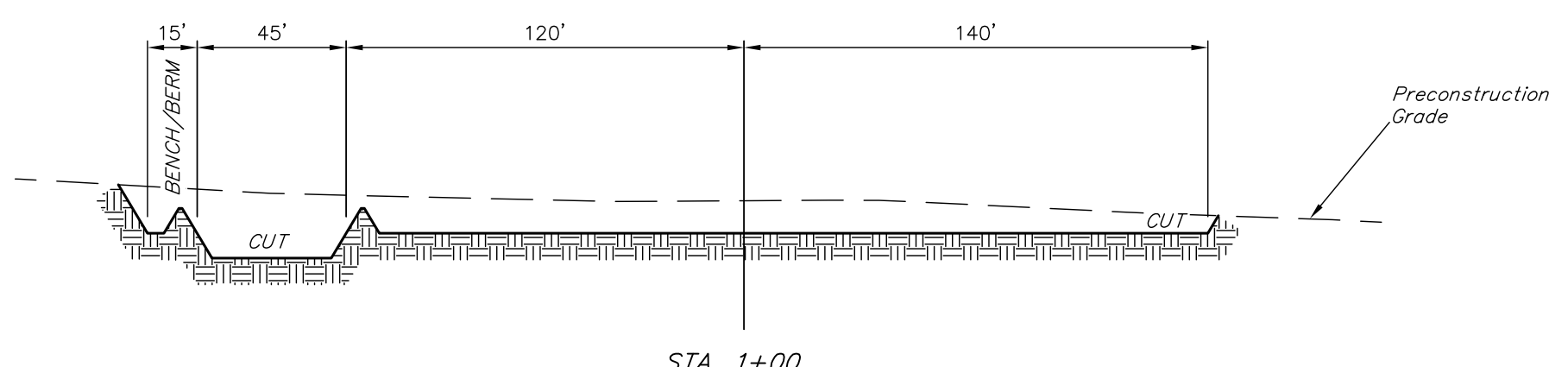
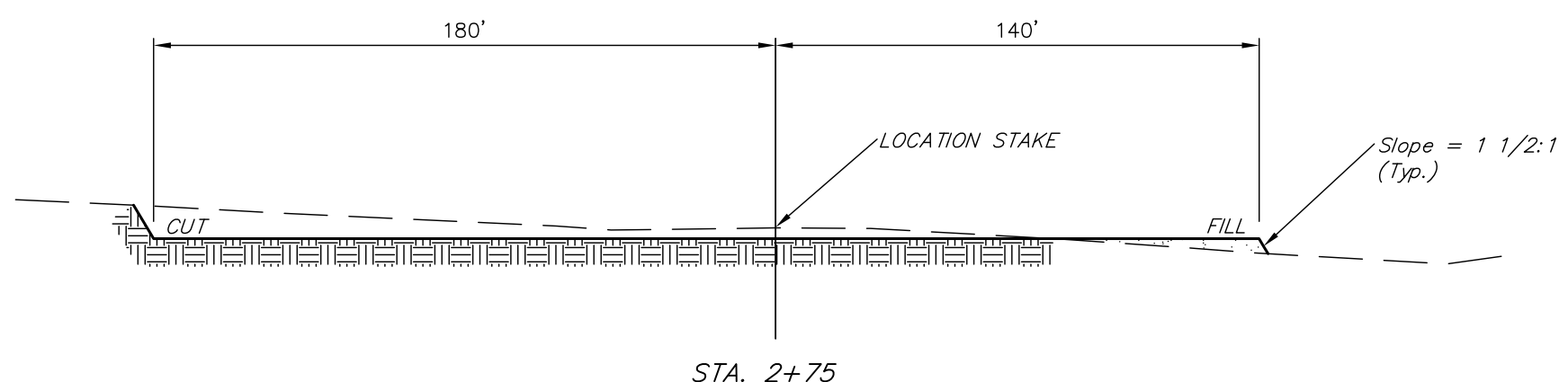
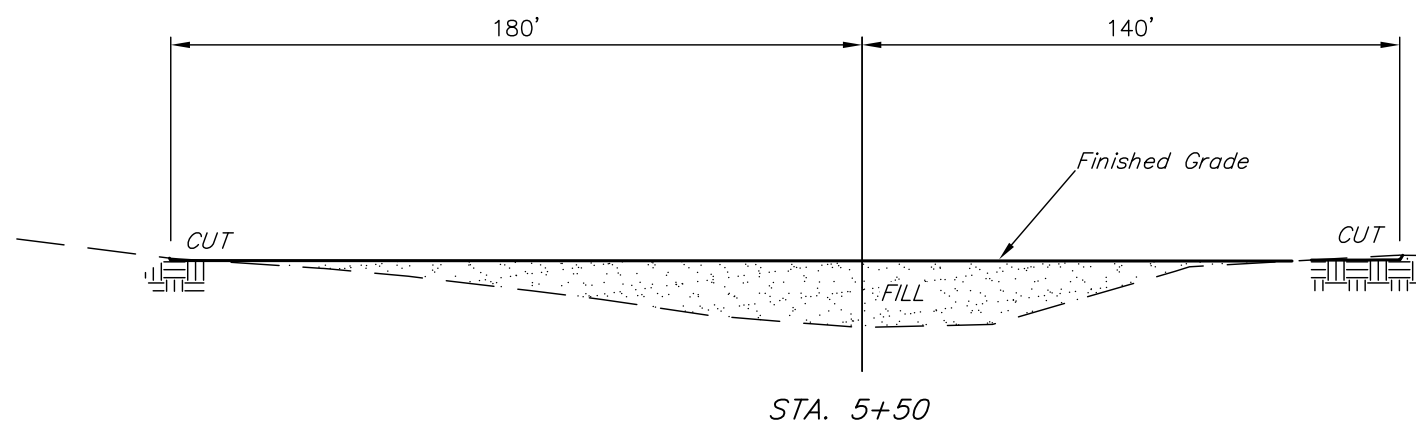
UINTAH ENGINEERING & LAND SURVEYING  
85 So. 200 East \* Vernal, Utah 84078 \* (435) 789-1017

1" = 20'  
X-Section  
Scale  
1" = 50'

DATE: 06-04-12  
DRAWN BY: S.R.L.

EOG RESOURCES, INC.  
CONSTRUCTION LAYOUT CROSS SECTIONS FOR  
DUTCH LAKE #24-22H  
SECTION 22, T6N, R62W, 6th P.M.  
320' FNL 954' FWL

FIGURE #2



NOTE:  
Topsoil should not be  
Stripped Below Finished  
Grade on Substructure Area.

\* NOTE:  
FILL QUANTITY INCLUDES  
5% FOR COMPACTION

APPROXIMATE YARDAGES

(6") Topsoil Stripping	=	3,420 Cu. Yds.
Remaining Location	=	10,810 Cu. Yds.
TOTAL CUT	=	14,230 CU. YDS.
FILL	=	10,460 CU. YDS.

EXCESS MATERIAL	=	3,770 Cu. Yds.
Topsoil & Pit Backfill (1/2 Pit Vol.)	=	3,770 Cu. Yds.
EXCESS UNBALANCE (After Interim Rehabilitation)	=	0 Cu. Yds.

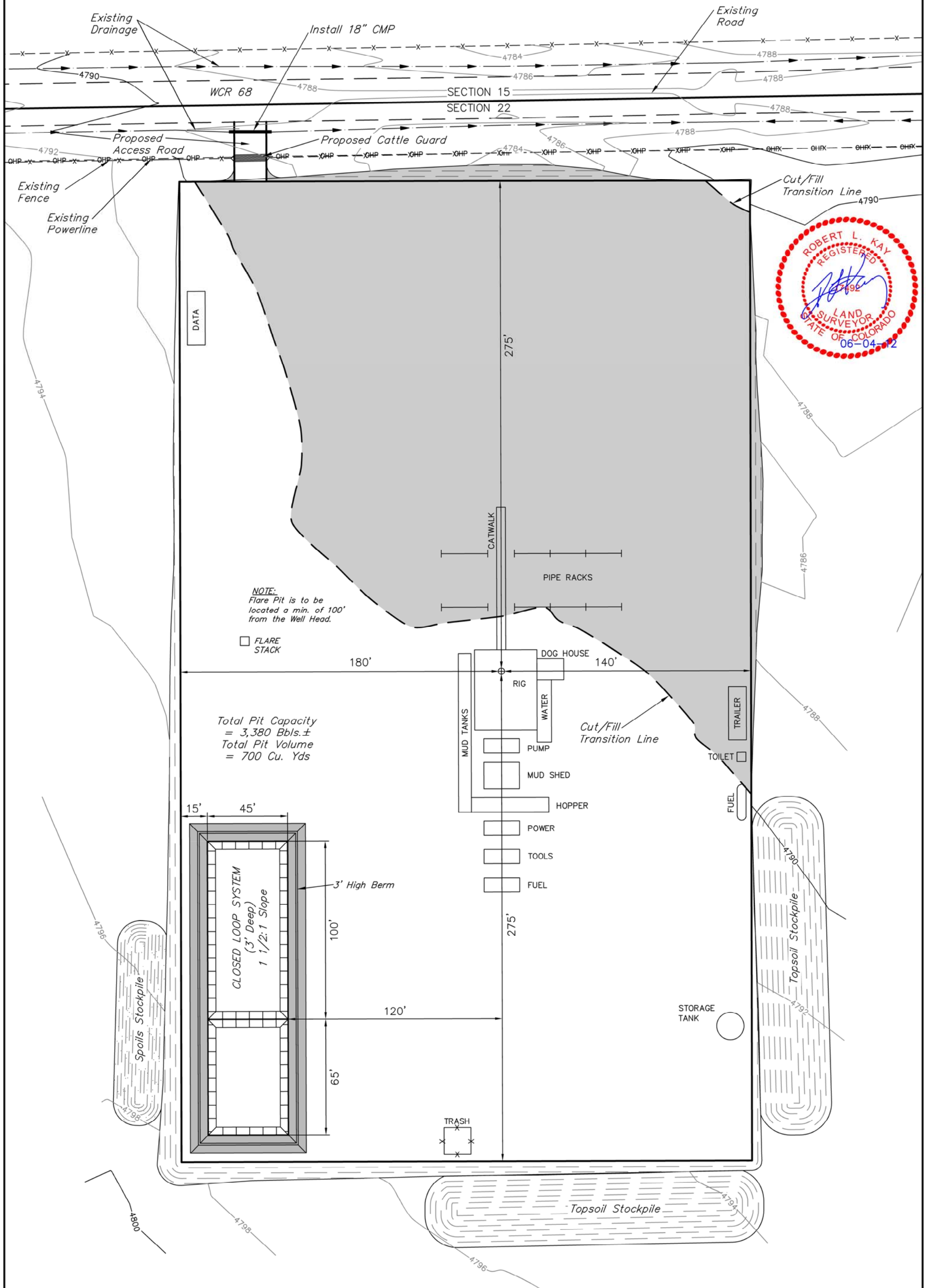
APPROXIMATE ACREAGES	
WELL SITE DISTURBANCE	= ± 5.273 ACRES
ACCESS ROAD DISTURBANCE	= ± 0.023 ACRES
TOTAL	= ± 5.296 ACRES

UINTAH ENGINEERING & LAND SURVEYING  
85 So. 200 East \* Vernal, Utah 84078 \* (435) 789-1017

EOG RESOURCES, INC.  
TYPICAL RIG LAYOUT FOR  
DUTCH LAKE #24-22H  
SECTION 22, T6N, R62W, 6th P.M.  
320' FNL 954' FWL

FIGURE #3

SCALE: 1" = 50'  
DATE: 06-04-12  
DRAWN BY: S.R.L.





EOG RESOURCES, INC.  
RECLAMATION DIAGRAM FOR  
DUTCH LAKE #24-22H  
SECTION 22, T6N, R62W, 6th P.M.  
320' FNL 954' FWL

FIGURE #4

SCALE: 1" = 50'  
DATE: 06-04-12  
DRAWN BY: S.R.L.

