

Well Location Plat

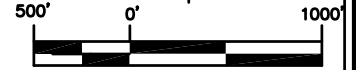
Gentry B16

Sec. 17, T.6S., R.92W.

Northwest Corner Sec. 17
Garfield County Brass Cap
S 88°47'02" E

North 1/4 Corner Sec.17
Brass Cap L.S. No.15846

Northeast Corner Sec. 17
Garfield County Brass Cap



Graphic Scale in Feet
1"=1000'

Legend

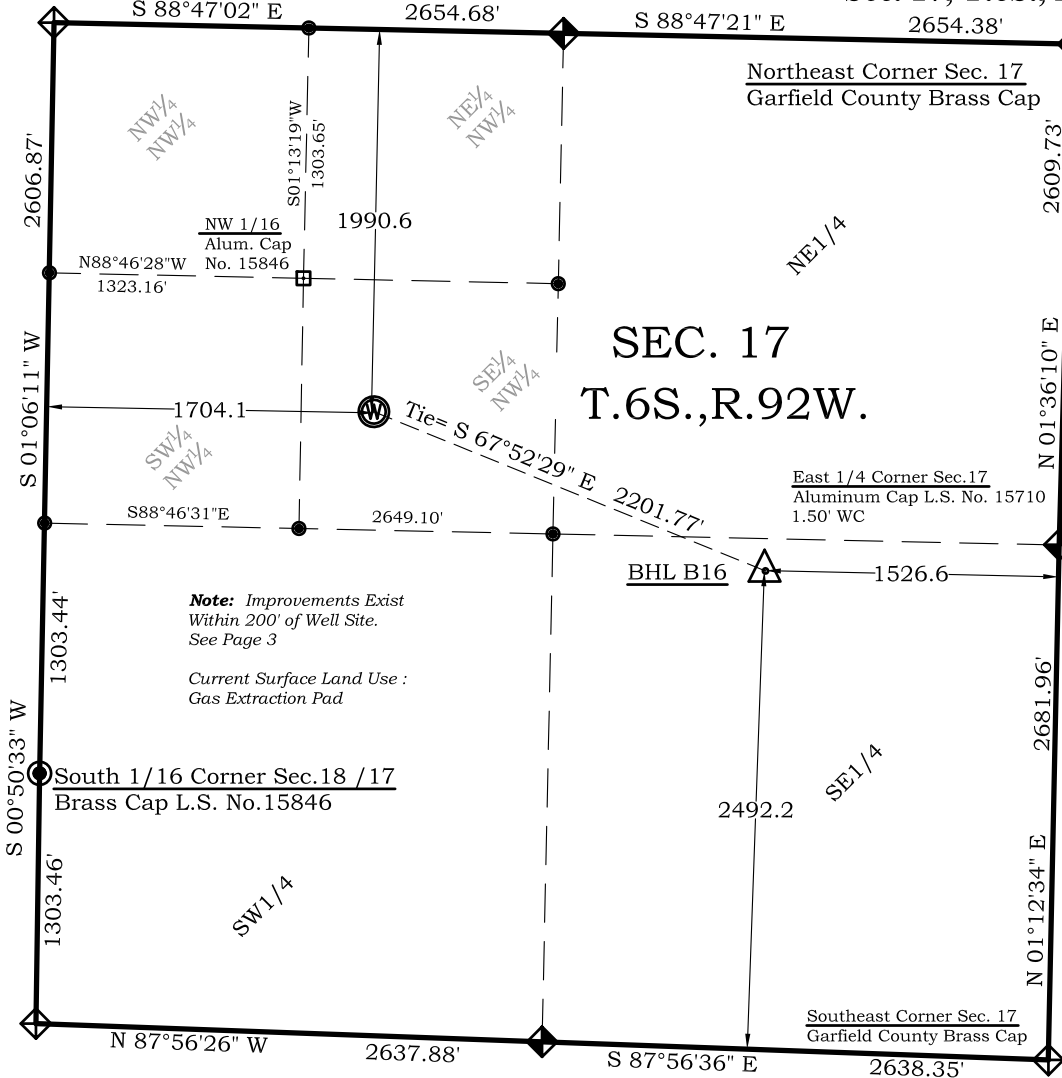
- ◆ - Field Surveyed Section Corner
- ◆ - Field Surveyed Quarter Corner
- - Calculated Section Corner Location
- - Field Surveyed 1/16 Corner

Bottom Hole: Gentry B16

2492' FSL
1527' FEL
NAD83
Lat:39.526305729°N
Long: 107.686631550°W
NAD27
Lat: 39.526325201°N
Long: 107.686015600°W

Surface: Gentry B16

1991 FNL
1704' FWL
Gnd El= 5624.5
Pad El= 5625.5
NAD83
Lat: 39.528413374°N
Long: 107.693944884°W
NAD27
Lat:39.528432854°N
Long: 107.693328637°W
UTM 13 NORTH
NAD 1983
NORTHING
14366387.854
EASTING
880756.891



Note: Improvements Exist
Within 200' of Well Site.
See Page 3

Current Surface Land Use :
Gas Extraction Pad

Southwest Corner Sec.17
Aluminum Cap L.S. No. 31944

South 1/4 Corner Sec.17
Brass Cap L.S. No.15846

Prepared For Antero Resources:

Proposed Gentry B16 Well Situate in The SE 1/4 NW 1/4
Section 17, Township 6 South, Range 92 West of the 6th.

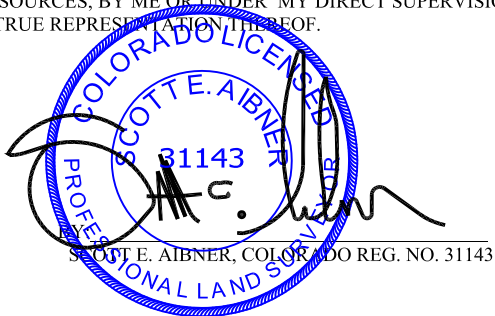
Principal Meridian, County of Garfield, State of Colorado

SURVEYOR'S CERTIFICATE

I, SCOTT E. AIBNER, A REGISTERED LAND SURVEYOR, LICENSED UNDER THE LAWS OF THE STATE OF COLORADO DO HEREBY CERTIFY THAT THE SURVEY SHOWN HEREON WAS PREPARED BY RIVER VALLEY SURVEY, INC., FOR ANTERO RESOURCES, BY ME OR UNDER MY DIRECT SUPERVISION AND THAT THIS PLAT IS A TRUE REPRESENTATION OF THE SAME.

Notes:

- 1.) LATITUDE AND LONGITUDE COORDINATES ARE DIFFERENTIALLY CORRECTED AND BASED ON PUBLISHED NGS CONTROL STATION "WDP-5".
SYSTEM: UTM ZONE: 13 NORTH DATUM: NAD 1983 (CONUS)
- 2.) ELEVATIONS ARE BASED ON NAVD OF 1929.
- 3.) ALL BOTTOM AND TOP HOLE LOCATIONS ARE MEASURED 90 DEGREES FROM SECTION LINE.
- 4.) USGS QUADRANGLE MAP "SILT CO".
- 5.) CURRENT SURFACE LAND USE: GAS PAD
- 6.) PDOP AT THE TIME OF LOCATION OF SURFACE WELL = 1.2



SCOTT E. AIBNER, COLORADO REG. NO. 31143



River Valley Survey, Inc.
110 East 3rd. Street, Suite 213
Rifle, Colorado 81650
Ph: 970-379-7846

Project: Gentry B Pad

Proj. No. 06001-11

Field Date: 02-21-12

Scale: 1"= 1000'

Date: 05-15-12

Sheet: 1 of 10

Well Location Plat
Prepared For Antero Resources

Situate In:
SE 1/4 NW 1/4 Section 17, T.6S., R. 92 W.
of the 6th P.M., Garfield County,
Colorado

