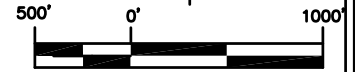
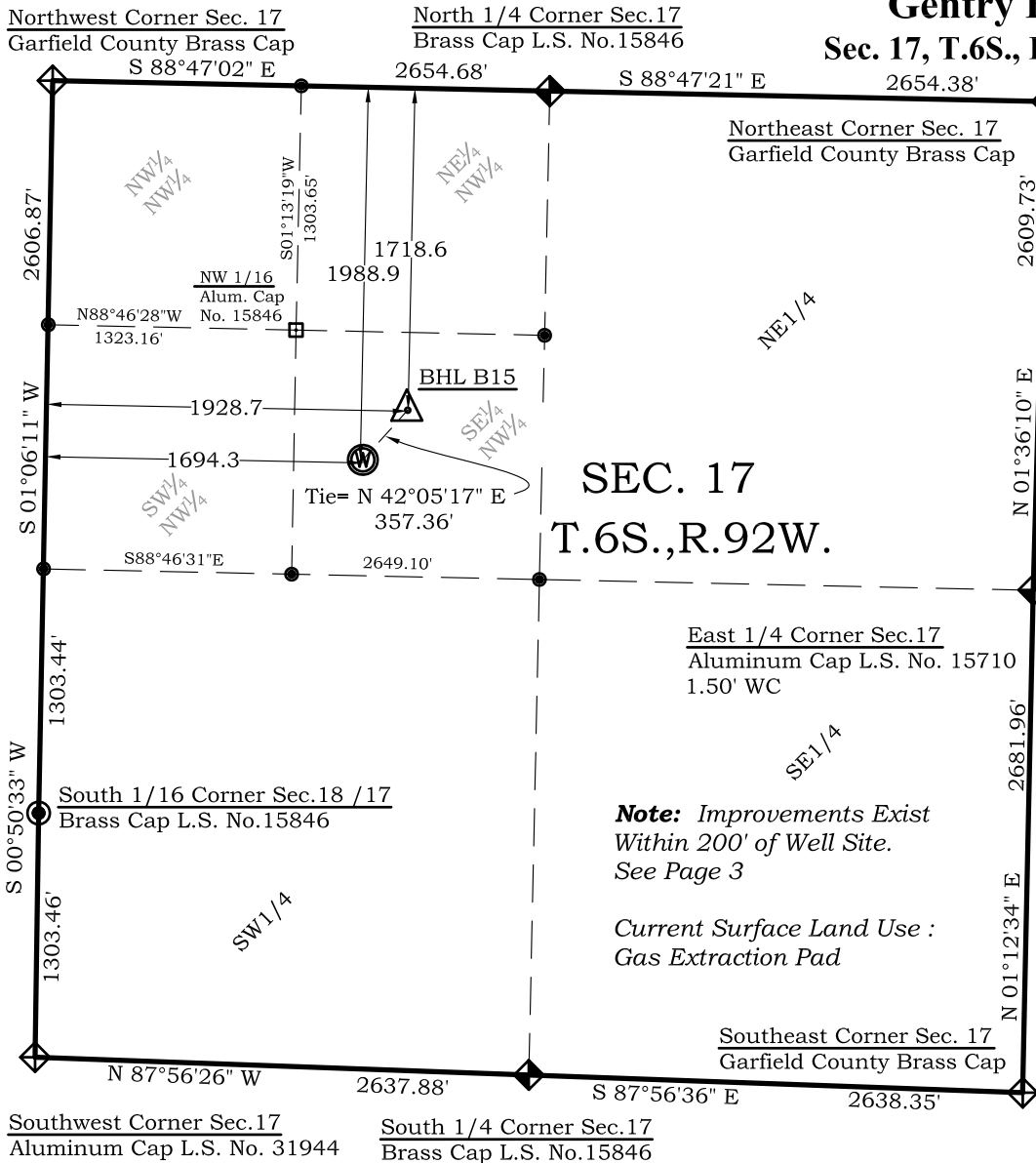


# Well Location Plat

## Gentry B15

Sec. 17, T.6S., R.92W.



Graphic Scale in Feet  
1"=1000'

### Legend

- ◈ - Field Surveyed Section Corner
- ◈ - Field Surveyed Quarter Corner
- - Calculated Section Corner Location
- ◻ - Field Surveyed 1/6 Corner

### Bottom Hole: Gentry B15

1719' FNL  
1929' FWL  
**NAD83**  
Lat: 39.529165121°N  
Long: 107.693159429°W  
**NAD27**  
Lat: 39.529184601°N  
Long: 107.692543200°W

### Surface: Gentry B15

1989 FNL  
1694' FWL  
Gnd El= 5624.5  
Pad El= 5625.5  
**NAD83**  
Lat: 39.528417900°N  
Long: 107.693979841°W  
**NAD27**  
Lat: 39.528437379°N  
Long: 107.693363592°W  
UTM 13 NORTH  
**NAD 1983**  
NORTHING  
14366389.797  
EASTING  
880747.082

**Note:** Improvements Exist  
Within 200' of Well Site.  
See Page 3

Current Surface Land Use :  
Gas Extraction Pad

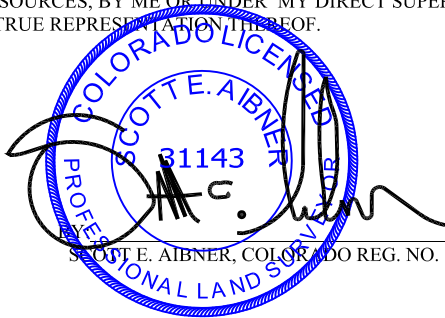
Prepared For Antero Resources:

Proposed Gentry B15 Well Situate in The SE 1/4 NW 1/4  
Section 17, Township 6 South, Range 92 West of the 6th.

Principal Meridian, County of Garfield, State of Colorado

### SURVEYOR'S CERTIFICATE

I, SCOTT E. AIBNER, A REGISTERED LAND SURVEYOR, LICENSED UNDER THE LAWS OF THE STATE OF COLORADO DO HEREBY CERTIFY THAT THE SURVEY SHOWN HEREON WAS PREPARED BY RIVER VALLEY SURVEY, INC., FOR ANTERO RESOURCES, BY ME OR UNDER MY DIRECT SUPERVISION AND THAT THIS PLAT IS A TRUE REPRESENTATION OF THE SAME.



SCOTT E. AIBNER, COLORADO REG. NO. 31143

### Notes:

- 1.) LATITUDE AND LONGITUDE COORDINATES ARE DIFFERENTIALLY CORRECTED AND BASED ON PUBLISHED NGS CONTROL STATION "WDP-5".  
SYSTEM: UTM ZONE: 13 NORTH DATUM: NAD 1983 (CONUS)
- 2.) ELEVATIONS ARE BASED ON NAVD OF 1929.
- 3.) ALL BOTTOM AND TOP HOLE LOCATIONS ARE MEASURED 90 DEGREES FROM SECTION LINE.
- 4.) USGS QUADRANGLE MAP "SILT CO".
- 5.) CURRENT SURFACE LAND USE: GAS PAD
- 6.) PDOP AT THE TIME OF LOCATION OF SURFACE WELL = 1.2



**River Valley Survey, Inc.**  
110 East 3rd. Street, Suite 213  
Rifle, Colorado 81650  
Ph: 970-379-7846

Project: Gentry B Pad

Proj. No. 06001-11

Field Date: 02-21-12

Scale: 1"= 1000'

Date: 05-15-12

Sheet: 1 of 10

**Well Location Plat**  
**Prepared For Antero Resources**

**Situate In:**  
SE 1/4 NW 1/4 Section 17, T.6S., R. 92 W.  
of the 6th P.M., Garfield County,  
Colorado

