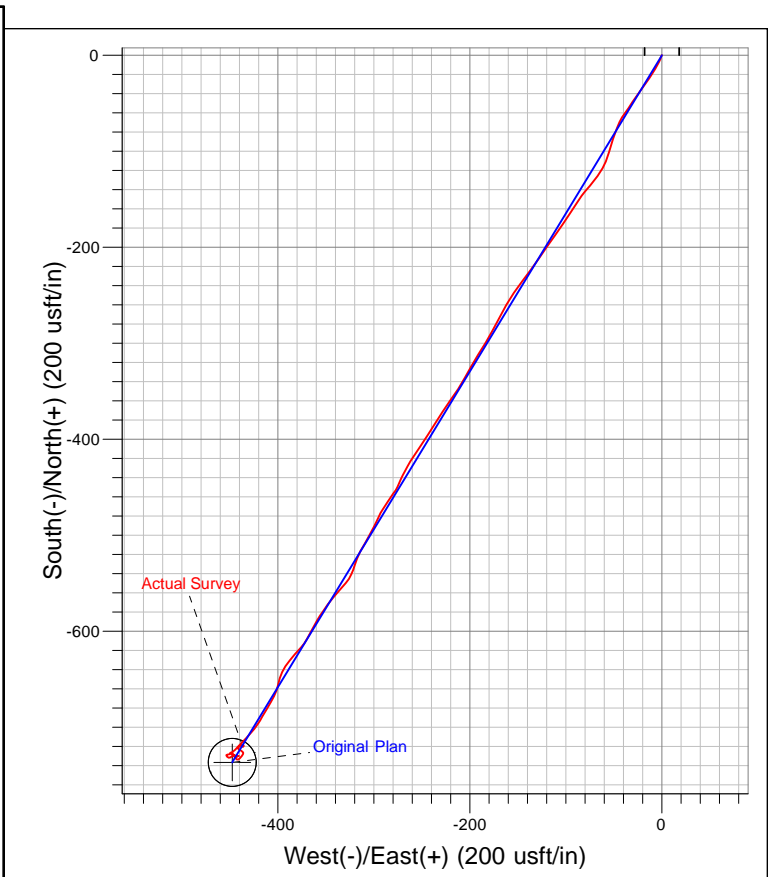
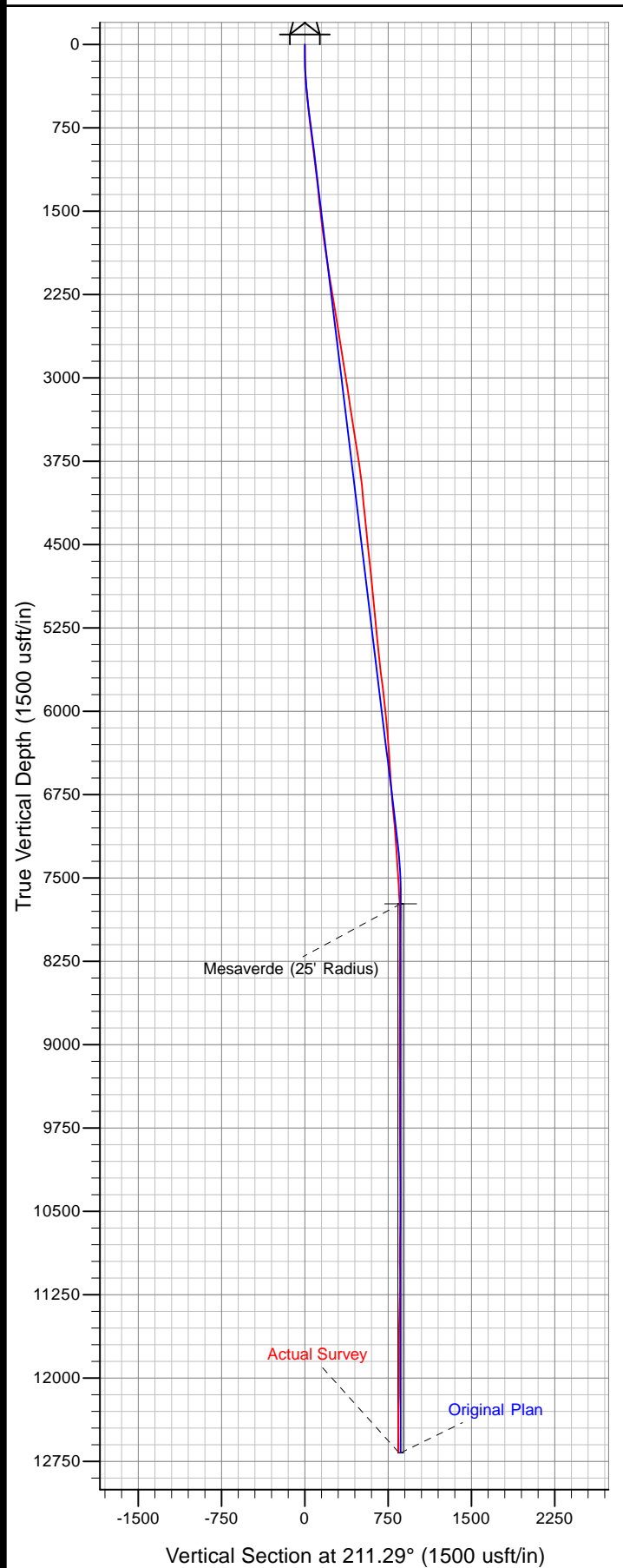




Well Name: Federal RGU 14-24-198  
 Surface Location: RGU 13-24-198 Pad  
 North American Datum 1983 , US State Plane 1983 Colorado Central Zone  
 Ground Elevation: 6540.0

+N/-S	+E/-W	Northing	Easting	Latitude	Longitude	Slot
0.0	0.0	1782148.90	2201698.70	39° 56' 47.275 N	108° 20' 51.121 W	B3

KELLY BUSHING @ 6562.0usft (Frontier 10 (22' RKB) kjs)



Azimuths to True North  
 Magnetic North: 10.54°  
 Magnetic Field  
 Strength: 52419.4snT  
 Dip Angle: 66.04°  
 Date: 9/11/2011  
 Model: IGRF2010