

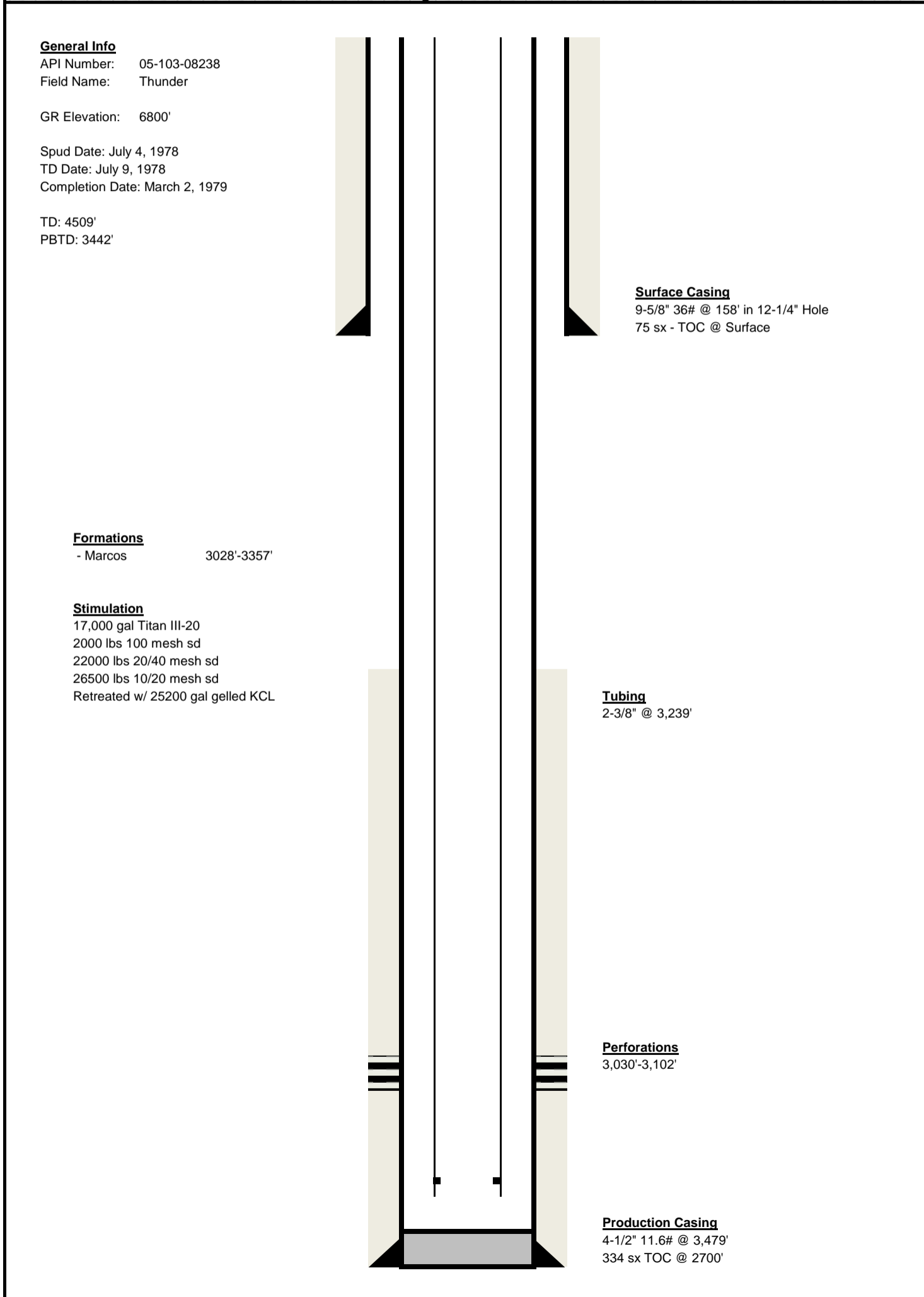
Foundation Energy Management, LLC

Drilling - Completion - Workover - Facilities

Wellbore Diagram-Current Conditions

AFE No.:		AFE Amount		Drilling:	
AFE Type: P&A				Completion:	
AFE Category: CAPEX				Total:	
WI: 50.0%	NRI: 76.5%	AFE Date: 5/22/2012	Budget Year: 2012		
Well / Battery Taiga 6I-9-4-102	Prospect Name	Total Depth 4509'	Est. Start Date June 2012		
Location NESE	Sec-Twn-Rng 9-4S-102W	Producing Horizon Mancos B	County, State Rio Blanco, CO		
AFE Description Plug and Abandon					

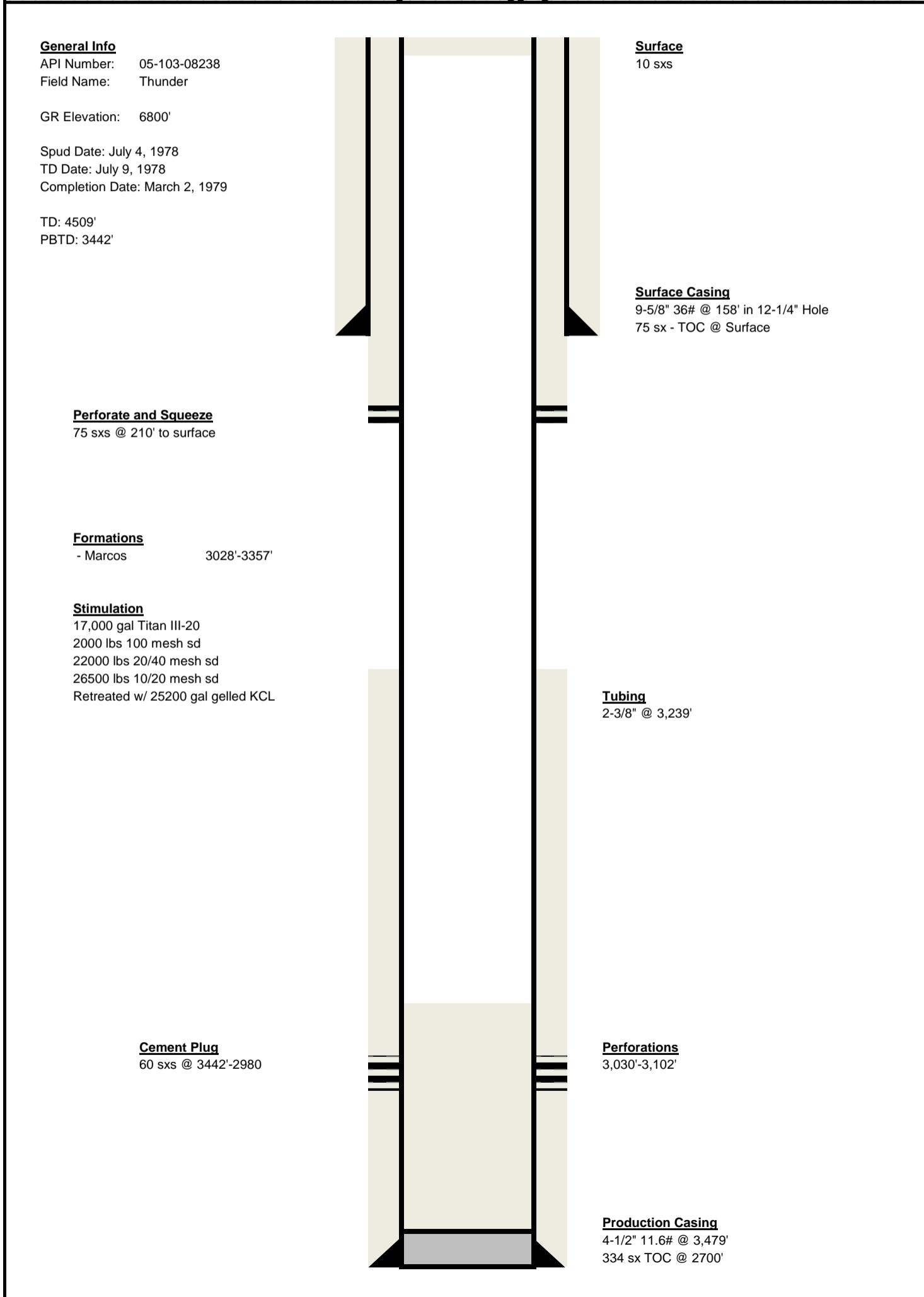
Wellbore Diagram-Current Conditions



Foundation Energy Management, LLC
Drilling - Completion - Workover - Facilities
Wellbore Diagram-After Plugging Conditions

AFE No.:		AFE Amount		Drilling:	
AFE Type: P&A				Completion:	
AFE Category: CAPEX				Total:	
WI: 50.0%	NRI: 76.5%	AFE Date: 5/22/2012	Budget Year: 2012		
Well / Battery Taiga 6I-9-4-102	Prospect Name	Total Depth 4509'	Est. Start Date June 2012		
Location NESE	Sec-Twn-Rng 9-4S-102W	Producing Horizon Mancos B	County, State Rio Blanco, CO		
AFE Description Plug and Abandon					

Wellbore Diagram-After Plugging Conditions



General Info

API Number: 05-103-08238
 Field Name: Thunder
 GR Elevation: 6800'
 Spud Date: July 4, 1978
 TD Date: July 9, 1978
 Completion Date: March 2, 1979
 TD: 4509'
 PBSD: 3442'

Surface

10 sxs

Surface Casing

9-5/8" 36# @ 158' in 12-1/4" Hole
 75 sx - TOC @ Surface

Perforate and Squeeze

75 sxs @ 210' to surface

Formations

- Mancos 3028'-3357'

Stimulation

17,000 gal Titan III-20
 2000 lbs 100 mesh sd
 22000 lbs 20/40 mesh sd
 26500 lbs 10/20 mesh sd
 Retreated w/ 25200 gal gelled KCL

Tubing

2-3/8" @ 3,239'

Cement Plug

60 sxs @ 3442'-2980

Perforations

3,030'-3,102'

Production Casing

4-1/2" 11.6# @ 3,479'
 334 sx TOC @ 2700'