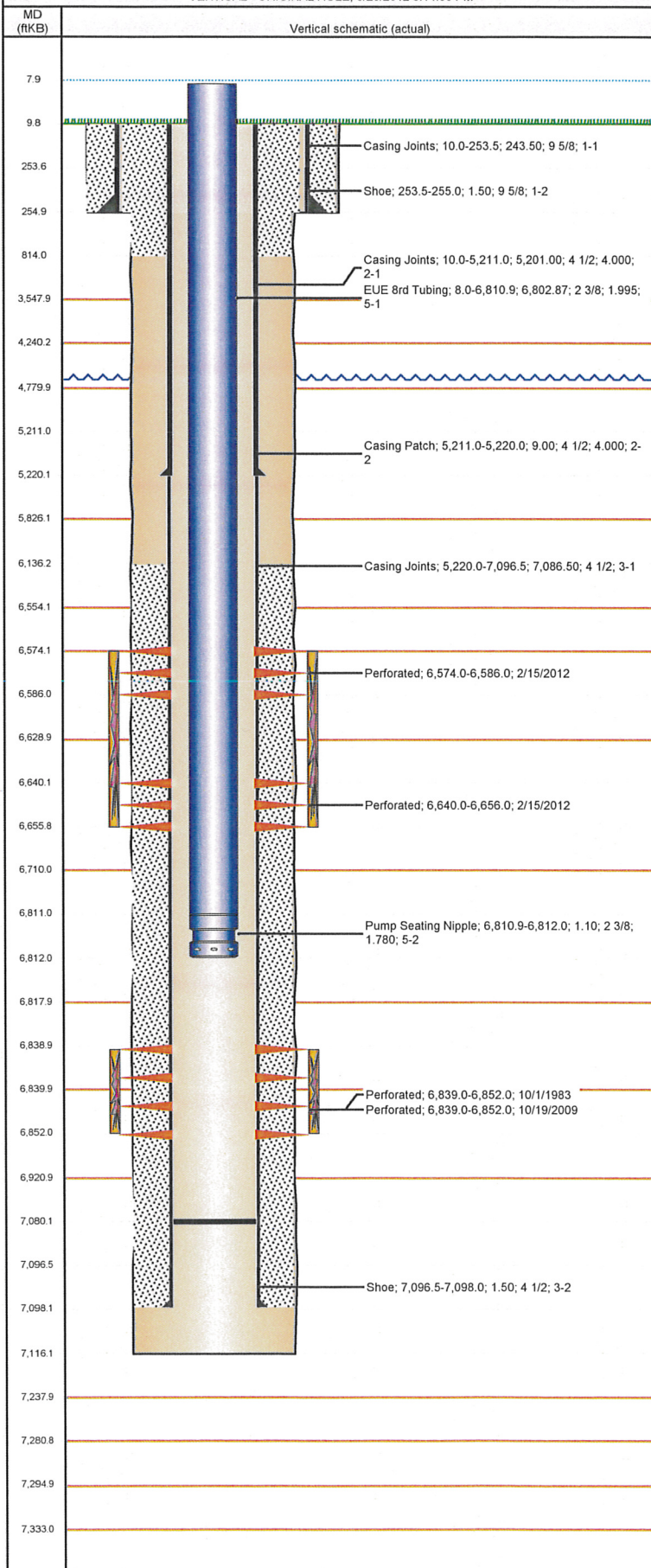


**Well Name: HERBST 01**

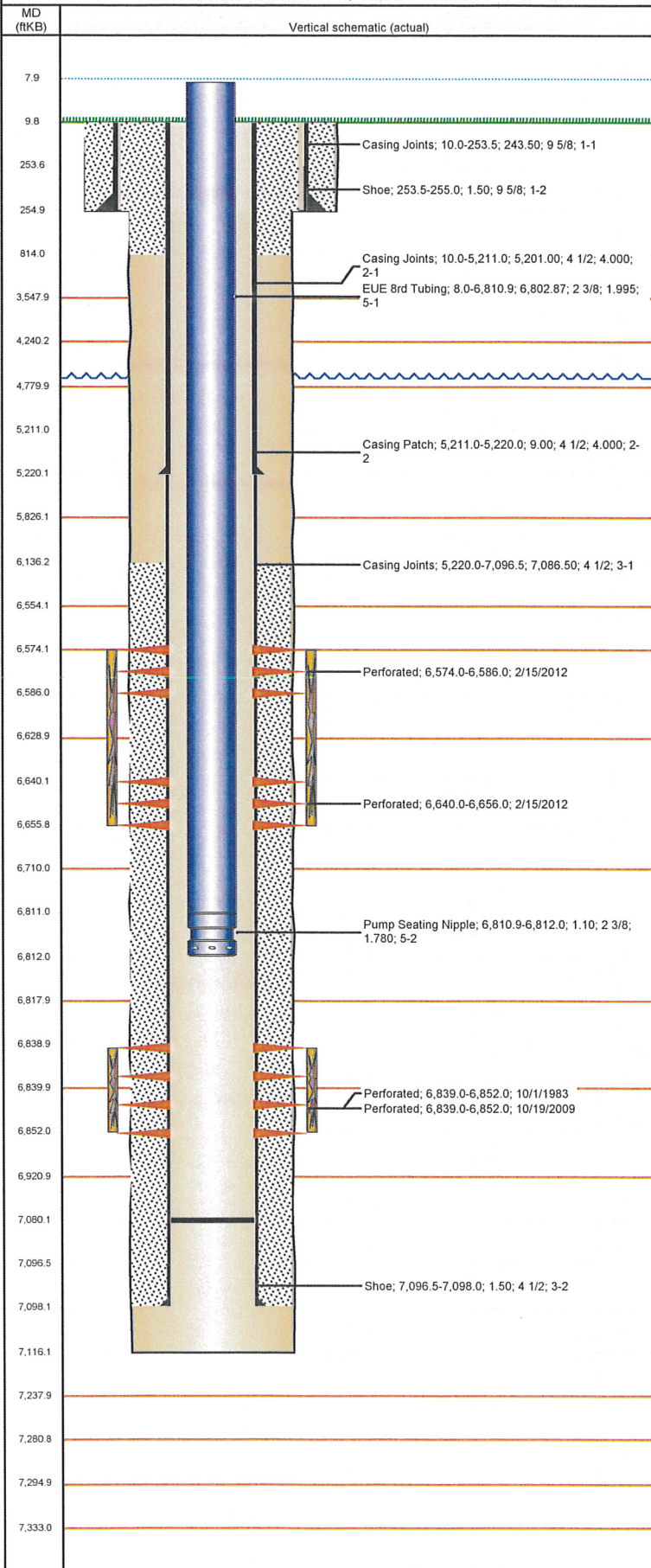
VERTICAL - ORIGINAL HOLE, 6/25/2012 3:14:59 PM



Well Header			
API	Business Unit	District	Well Config
05-123-05138	WATTENBERG	15	VERTICAL
Original KB Elevation (ft)	KB - GL / MSL (ftKB)	Spud Date	P & A Date
4,682.00	10.00	9/7/1983	
Comment			
D&A'd 1/56, RE-ENTERED 9/83, GL & SURFACE LCTN IS DIFFERENT ON LOGS & PERMIT FROM 9/30/1983 PLAT; KB IS 10'; CSG REPAIR 3/07			
Directions To Well			
WCR 42 AND WCR 55: EAST 2/10, NORTH INTO			
Current PBTD (ftKB)			
ORIGINAL HOLE - 7,080.0			
Surface Location (Congressional)			
Quarter 1	Quarter 2	Quarter 3	Quarter 4
		SW	SW
Section	Township	Twnshp N...	Range
22	4	N	64
Rng E/W	Dir		
64	W		
Bottom Hole Location			
North-South Distance (ft)	From N or S Line	East-West Distance (ft)	From E or W Line
Plug Back Total Depths			
Date	Depth (ftKB)	Method	Com
9/13/1983	7,060.0	CASED HOLE LOG	DEPTH LOGGER ON CBL
10/16/2009	7,086.0	TAG	234' OF RAT HOLE
Wellbore Sections			
Section Des	Size (in)	Act Top (ftKB)	Act Btm (ftKB)
SURFACE	12 1/4	10.0	255.0
PRODUCTION	7 7/8	255.0	7,116.0
Zone Statuses			
Zone Name	Status Date	Status	Job
CODELL	11/22/1983	PR	DRILLING/COMPLETION - RE-ENTRY, 9/7/1983 00:00
CODELL	12/15/2009	PR	RE-FRAC, 10/15/2009 13:00
CODELL	2/13/2012	SI	RECOMPLETION, 2/13/2012 06:00
CODELL	3/7/2012	PR	RECOMPLETION, 2/13/2012 06:00
NIOBRARA	2/25/2012	PR	RECOMPLETION, 2/13/2012 06:00
NIOBRARA	3/7/2012	PR	RECOMPLETION, 2/13/2012 06:00
Casing Strings			
Csg Des	Run Date	OD (in)	Wt/Len (lb/ft)
Surface	9/7/1983	9 5/8	36.00
Production	3/24/2007	4 1/2	11.60 N-80
Production	9/8/1983	4 1/2	11.60
Top (ftKB)	Set Depth (ftKB)		
10.0	255.0		
10.0	5,220.0		
10.0	7,098.0		
Cement			
Des	Top (ftKB)	Btm (ftKB)	
SURFACE CASING CEMENT	10.0	255.0	
PRODUCTION CASING CEMENT	6,136.0	7,098.0	
PROD CSG ANNULAR CEMENT REPAIR	10.0	814.0	
Tubing Components			
Item Des	OD (in)	Wt (lb/ft)	Grade
EUE 8rd Tubing	2 3/8	4.70	J-55
Pump Seating Nipple	2 3/8		
Jts	Len (ft)		
220	6,802.87		
1	1.10		
Perforation Data			
Zone	Bnch/St g	Entered Shot Total	Top (ftKB)
NIOBRARA, ORIGINAL HOLE	A	24	6,574.0
NIOBRARA, ORIGINAL HOLE	B	32	6,640.0
CODELL, ORIGINAL HOLE		15	6,839.0
CODELL, ORIGINAL HOLE		52	6,839.0
Btm (ftKB)	Date		
6,586.0	2/15/2012		
6,656.0	2/15/2012		
6,852.0	10/1/1983		
6,852.0	10/19/2009		
Stimulations & Treatments			
Bnch/St g	Date	Zone	Primary Job Type
	10/1/1983	CODELL, ORIGINAL HOLE	DRILLING/COMPLETION - RE-ENTRY
Comment			
INFORMATION TAKEN FROM STATE CMLPTN RPT.			
Total Add Amount	Total Clean Volume...	Vol Slurry Tot (gal)	Vol Gas Tot (MCF)
Proppant 175000 lb		114408.00	
Avg Treat Pressure (psi)	Max Treat Pressure (psi)	Avg Treat Rate (bbl/min)	Max Treat Rate (bbl/min)

**Well Name: HERBST 01**

VERTICAL - ORIGINAL HOLE, 6/25/2012 3:15:00 PM



Stimulations & Treatments				
Bnch/Stg	Date	Zone	Primary Job Type	
	10/27/2009	CODELL, ORIGINAL HOLE	RE-FRAC	
Comment (CODELL REFRAC): ISIP - 3376 PSI. TREATMENT WENT WELL. AVG NOLTE - 0.11. POST ISIP - 3928 PSI. AVG VISC - 22.47 CP. AVG TEMP - 70.83F. AVG PH - 10.26.				
Total Add Amount		Total Clean Volume...	Vol Slurry Tot (gal)	Vol Gas Tot (MCF)
Proppant Ottawa 232928 lb		127806.00	138348.00	
Avg Treat Pressure (psi)	Max Treat Pressure (psi)	Avg Treat Rate (bbl/min)	Max Treat Rate (bbl/min)	
5,222.0	6,406.0	14.06	14.35	
Bnch/Stg	Date	Zone	Primary Job Type	
	2/23/2012	NIORARA, ORIGINAL HOLE	RECOMPLETION	
Comment (NIORARA): OPEN 0 PSI, BREAK 4823 @ 2.5, ISIP 3376, 5 MIN 3171 FINAL ISIP 4066, 5 MIN 3355, AVG VIS 13.62, AVG PH 10.61, AVG TEMP 59.1, ISSUES WITH SURFACE PRESSURE WERE NOT REAL, OPENED VALVE TO SEE IF PRESSURE WAS REAL, IT WAS NOT, REPLACED WIRE AND TRANSDUCER THEN WORKED FINE.				
Total Add Amount		Total Clean Volume...	Vol Slurry Tot (gal)	Vol Gas Tot (MCF)
Proppant Ottawa 239783.504 lb		147240.24	158162.34	
Avg Treat Pressure (psi)	Max Treat Pressure (psi)	Avg Treat Rate (bbl/min)	Max Treat Rate (bbl/min)	
6,963.0	7,526.0	24.20	25.60	
Other In Hole				
Run Date	Des	OD (in)	Top (ftKB)	Btm (ftKB)
Logs				
Date	Type	Top (ftKB)	Btm (ftKB)	
9/13/1983	CEMENT BOND	6,040.0	7,054.0	
3/29/2007	CBL/CCL/GR	0.0	950.0	
3/15/2011	GYRO	10.0	6,800.0	