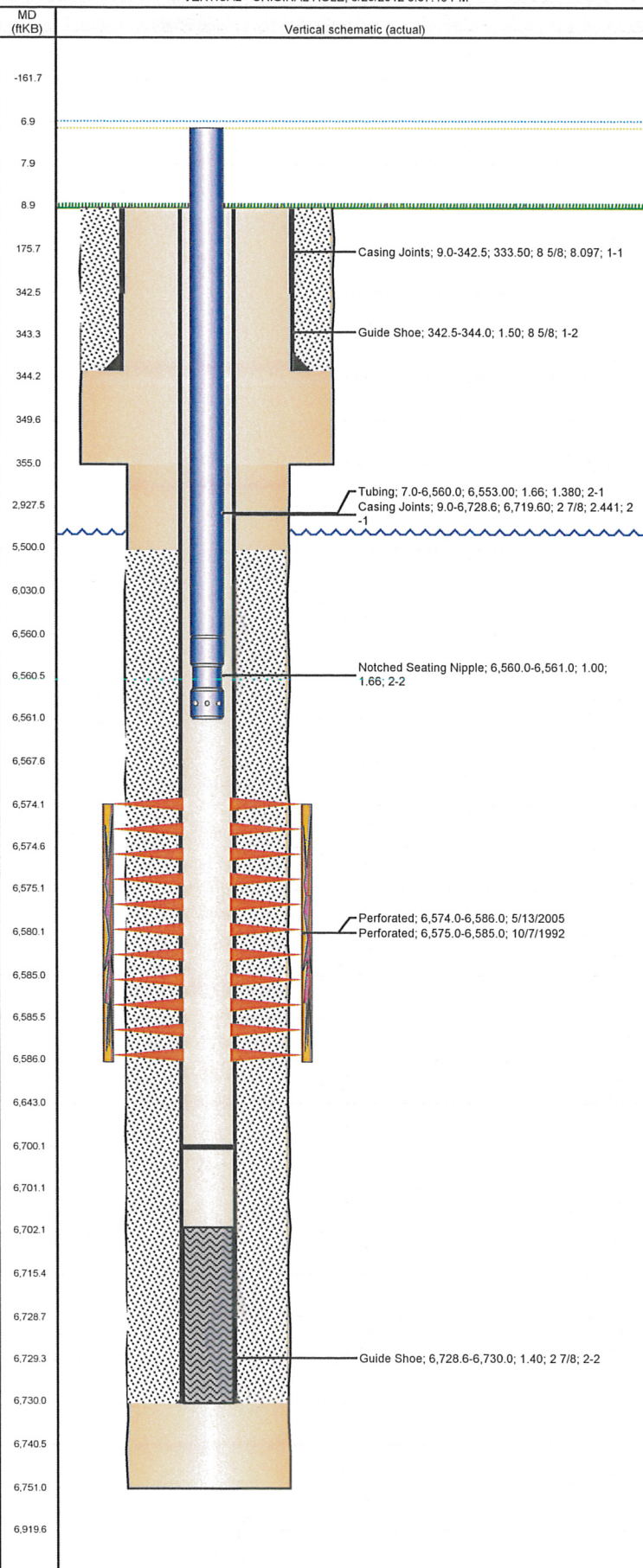


Well Name: **MONFORT BB30-03**

VERTICAL - ORIGINAL HOLE, 6/25/2012 3:07:46 PM



Well Header

API 05-123-15532	Business Unit WATTENBERG	District 15	Well Config VERTICAL
Original KB Elevation (ft) 4,563.00	KB - GL / MSL (ftKB) 9.00	Spud Date 9/29/1992	P & A Date

Comment
INCORRECT GL ON LOGS KB=9'
SLIMHOLE WELLBORE

Directions To Well
HWY 34 & WCR 61, NORTH TO WCR 380, NORTH 20' TO GATE, EAST THRU GATE 0.3, NORTH 0.1 INTO.

Current PBTD (ftKB)
ORIGINAL HOLE - 6,700.0

Surface Location (Congressional)

Quarter 1	Quarter 2	Quarter 3	Quarter 4	Section	Township	Twship N...	Range	Rng E/W Dir
		NE	NW	30	5	N	63	W

Bottom Hole Location

North-South Distance (ft)	From N or S Line	East-West Distance (ft)	From E or W Line
---------------------------	------------------	-------------------------	------------------

Plug Back Total Depths

Date	Depth (ftKB)	Method	Com
10/3/1992	6,702.0	CASED HOLE LOG	DEPTH LOGGER
10/3/1992	6,726.0	CASING TALLY	BAFFLE

Wellbore Sections

Section Des	Size (in)	Act Top (ftKB)	Act Btm (ftKB)
SURFACE	12 1/4	9.0	355.0
PRODUCTION	7 7/8	355.0	6,751.0

Zone Statuses

Zone Name	Status Date	Status	Job
CODELL	11/20/1992	PR	DRILLING/COMPLETION - ORIGINAL, 9/29/1992 00:00
CODELL	6/10/2005	PR	DRILLING/COMPLETION - ORIGINAL, 9/29/1992 00:00
CODELL	2/14/2012	PR	TRI-FRAC, 11/9/2011 06:00

Casing Strings

Csg Des	Run Date	OD (in)	Wt/Len (lb/ft)	Grade	Top (ftKB)	Set Depth (ftKB)
Surface	9/29/1992	8 5/8	24.00	?	9.0	344.0
Production	10/3/1992	2 7/8	6.50	N-80	9.0	6,730.0

Cement

Des	Top (ftKB)	Btm (ftKB)
SURFACE CASING CEMENT	9.0	344.0
PRODUCTION CASING CEMENT	5,500.0	6,730.0

Tubing Components

Item Des	OD (in)	Wt (lb/ft)	Grade	Jts	Len (ft)
Tubing	1.66	2.33	J-55	199	6,553.00
Notched Seating Nipple	1.66		J-55	1	1.00

Perforation Data

Zone	Bnch/St g	Entered Shot Total	Top (ftKB)	Btm (ftKB)	Date
CODELL, ORIGINAL HOLE		48	6,574.0	6,586.0	5/13/2005
CODELL, ORIGINAL HOLE		40	6,575.0	6,585.0	10/7/1992

Stimulations & Treatments

Bnch/Stg	Date	Zone	Primary Job Type
	10/14/1992	CODELL, ORIGINAL HOLE	DRILLING/COMPLETION - ORIGINAL

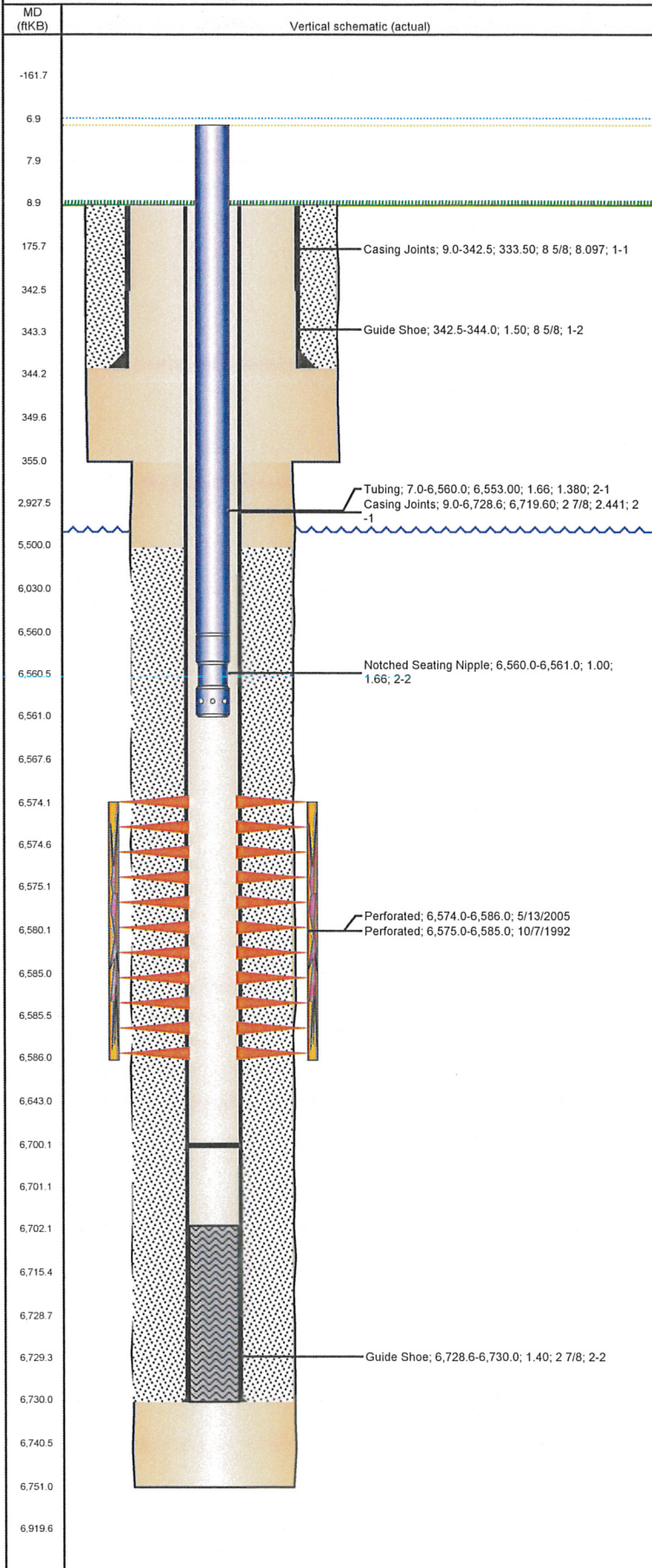
Total Add Amount Proppant 170000 lb	Total Clean Volume...	Vol Slurry Tot (gal) 59598.00	Vol Gas Tot (MCF)
Avg Treat Pressure (psi) 4,936.0	Max Treat Pressure (psi) 5,424.0	Avg Treat Rate (bbl/min) 15.10	Max Treat Rate (bbl/min) 16.14

Bnch/Stg	Date	Zone	Primary Job Type
	6/2/2005	CODELL, ORIGINAL HOLE	RE-FRAC

Total Add Amount Proppant Ottawa 244640 lb	Total Clean Volume...	Vol Slurry Tot (gal) 128142.00	Vol Gas Tot (MCF)
Avg Treat Pressure (psi) 4,639.0	Max Treat Pressure (psi) 4,998.0	Avg Treat Rate (bbl/min) 14.45	Max Treat Rate (bbl/min) 14.89

Well Name: MONFORT BB30-03

VERTICAL - ORIGINAL HOLE, 6/25/2012 3:07:47 PM



Stimulations & Treatments

Bnch/Stg	Date	Zone	Primary Job Type
	12/9/2011	CODELL, ORIGINAL HOLE	TRI-FRAC
Comment (CODELL TRIFRAC) SI @ 160 BBLS AWAY - ISIP= 3357 , F.G. = 0.94 , 5 MIN = 2885 , 10 MIN = 2733 . (POST - JOB , JOB WENT WELL NO ISSUES TO REPORT. FINAL SI - ISIP = 3428 , F.G. = 0.96 , 5 MIN = 3090			
Total Add Amount	Total Clean Volume...	Vol Slurry Tot (gal)	Vol Gas Tot (MCF)
Proppant Ottawa 245972 lb	130662.00	138936.00	
Avg Treat Pressure (psi)	Max Treat Pressure (psi)	Avg Treat Rate (bbl/min)	Max Treat Rate (bbl/min)
4,845.0	5,165.0	16.37	17.28

Other In Hole

Run Date	Des	OD (in)	Top (ftKB)	Btm (ftKB)

Logs

Date	Type	Top (ftKB)	Btm (ftKB)
10/3/1992	COMPENSATED DENSITY	3,800.0	6,751.0
10/7/1992	ACOUSTIC	5,300.0	6,702.0