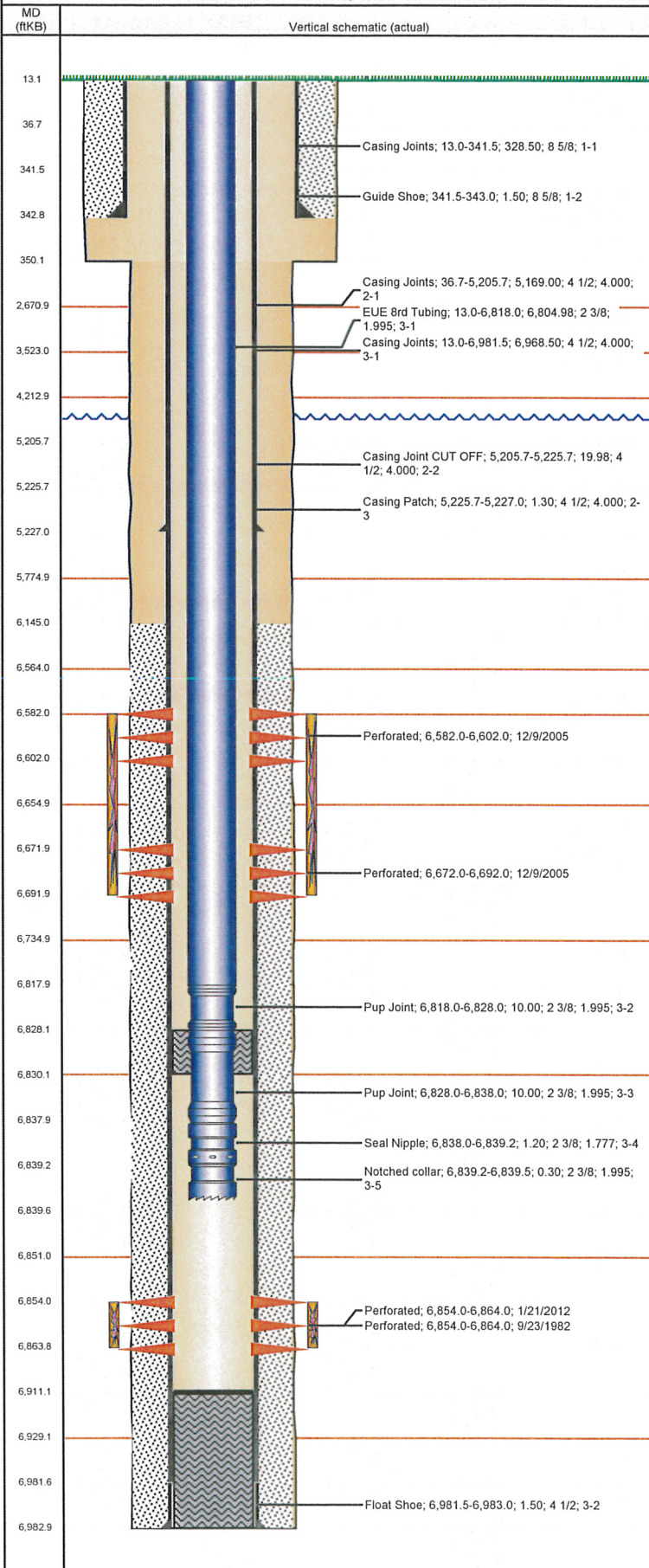


Well Name: ECKHARDT 02

VERTICAL - ORIGINAL HOLE, 6/25/2012 2:48:25 PM



## Well Header

API 05-123-10786	Business Unit WATTENBERG	District 15	Well Config VERTICAL
Original KB Elevation (ft) 4,693.00	KB - GL / MSL (ftKB) 13.00	Spud Date 9/15/1982	P & A Date

Comment  
CSG RPR 12/05; PATCH @ 5226. CIBP @ 6830'. VERY SKETCHY FILE!!!!

Directions To Well  
CR 50 & CR 53 EAST .3 NORTH THROUGH T.B. .1 INTO

Current PBTD (ftKB)  
ORIGINAL HOLE - 6,911.0

## Surface Location (Congressional)

Quarter 1	Quarter 2	Quarter 3	Quarter 4	Section	Township	Twnshp N...	Range	Rng E/W Dir
		SE	SW	33	5	N	64	W

## Bottom Hole Location

North-South Distance (ft)	From N or S Line	East-West Distance (ft)	From E or W Line

## Plug Back Total Depths

Date	Depth (ftKB)	Method	Com
9/23/1982	6,911.0	CASED HOLE LOG	DEPTH LOGGER
12/11/1990	6,850.0	TAG	CO TO 6911

## Wellbore Sections

Section Des	Size (in)	Act Top (ftKB)	Act Btm (ftKB)
SURFACE	12 1/4	13.0	350.0
PRODUCTION	7 7/8	350.0	6,983.0

## Zone Statuses

Zone Name	Status Date	Status	Job
NIOBRARA	1/12/2006	PR	CASING REPAIR, 12/5/2005 06:00
CODELL	11/2/1982	PR	DRILLING/COMPLETION - ORIGINAL, 9/15/1982 06:00
CODELL	12/30/2004	SI	CASING REPAIR, 12/5/2005 06:00
CODELL	2/15/2012	PR	RE-FRAC, 1/19/2012 06:00

## Casing Strings

Csg Des	Run Date	OD (in)	Wt/Len (lb/ft)	Grade	Top (ftKB)	Set Depth (ftKB)
Surface	9/15/1982	8 5/8	24.00		13.0	343.0
Production	12/8/2005	4 1/2	11.60	M-80	36.7	5,227.0
Production	9/20/1982	4 1/2	11.60		13.0	6,983.0

## Cement

Des	Top (ftKB)	Btm (ftKB)
SURFACE CASING CEMENT	13.0	343.0
PRODUCTION CASING CEMENT	6,145.0	6,983.0
DUMP BAIL	6,828.0	6,830.0

## Tubing Components

Item Des	OD (in)	Wt (lb/ft)	Grade	Jts	Len (ft)
EUE 8rd Tubing	2 3/8	4.70	J-55	221	6,804.98
Pup Joint	2 3/8	4.70	J-55	1	10.00
Pup Joint	2 3/8	4.70	J-55	1	10.00
Seal Nipple	2 3/8	4.70	N-80	1	1.20
Notched collar	2 3/8	4.70	J-55	1	0.30

## Perforation Data

Zone	Bnch/St g	Entered Shot Total	Top (ftKB)	Btm (ftKB)	Date
NIOBRARA, ORIGINAL HOLE		120	6,582.0	6,602.0	12/9/2005
NIOBRARA, ORIGINAL HOLE		120	6,672.0	6,692.0	12/9/2005
CODELL, ORIGINAL HOLE		21	6,854.0	6,864.0	9/23/1982
CODELL, ORIGINAL HOLE		40	6,854.0	6,864.0	1/21/2012

## Stimulations & Treatments

Bnch/Stg	Date	Zone	Primary Job Type
	9/25/1982	CODELL, ORIGINAL HOLE	DRILLING/COMPLETION - ORIGINAL

Comment

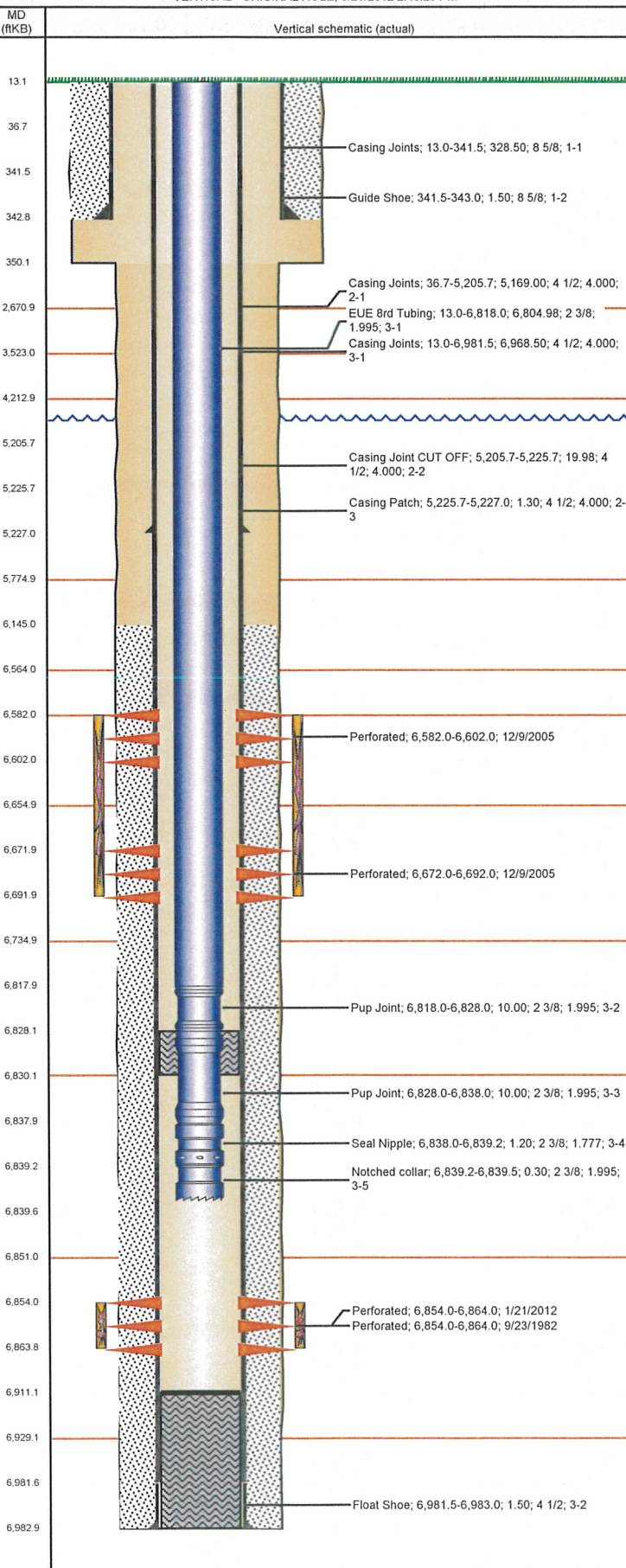
Total Add Amount	Total Clean Volume...	Vol Slurry Tot (gal)	Vol Gas Tot (MCF)
Proppant Ottawa 270000 LB	42000.00		

Avg Treat Pressure (psi)	Max Treat Pressure (psi)	Avg Treat Rate (bbl/min)	Max Treat Rate (bbl/min)



Well Name: ECKHARDT 02

VERTICAL - ORIGINAL HOLE, 6/25/2012 2:48:26 PM



## Stimulations & Treatments

Bnch/Stg	Date	Zone	Primary Job Type	
	1/11/2006	NIOBRARA, ORIGINAL HOLE	CASING REPAIR	
Comment				
CASING REPAIR/NIOBRARA RECOMPLETE				
Total Add Amount		Total Clean Volume...	Vol Slurry Tot (gal)	Vol Gas Tot (MCF)
Proppant Ottawa 238260 LB; Proppant SB Excel 12000 lb			168798.01	
Avg Treat Pressure (psi)		Max Treat Pressure (psi)	Avg Treat Rate (bbl/min)	Max Treat Rate (bbl/min)
7,069.0		7,285.0	25.90	28.70
Bnch/Stg	Date	Zone	Primary Job Type	
	1/27/2012	CODELL, ORIGINAL HOLE	RE-FRAC	
Comment				
(CODELL RF): BREAK - 4195 @ 4.9 BPM. ISIP - 3093, 5 MIN - 1732. FINAL ISIP - 3893, 5 MIN - 3521. AVG VISC - 22.7, AVG PH - 10.25, AVG TEMP - 66.98. TREATMENT WENT WELL.				
Total Add Amount		Total Clean Volume...	Vol Slurry Tot (gal)	Vol Gas Tot (MCF)
Proppant Ottawa 246253.298 lb		128332.69	139523.16	
Avg Treat Pressure (psi)		Max Treat Pressure (psi)	Avg Treat Rate (bbl/min)	Max Treat Rate (bbl/min)
15.2		5,625.0	14.75	15.18

## Other In Hole

Run Date	Des	OD (in)	Top (ftKB)	Btm (ftKB)

## Logs

Date	Type	Top (ftKB)	Btm (ftKB)
9/20/1982	COMPENSATED DENSITY	343.0	6,964.0
9/20/1982	INDUCTION	343.0	6,964.0
9/21/1982	COMPLEX RESERVOIR ANALYSIS	6,550.0	6,950.0
9/23/1982	CBL/CCL/GR	6,100.0	6,908.0