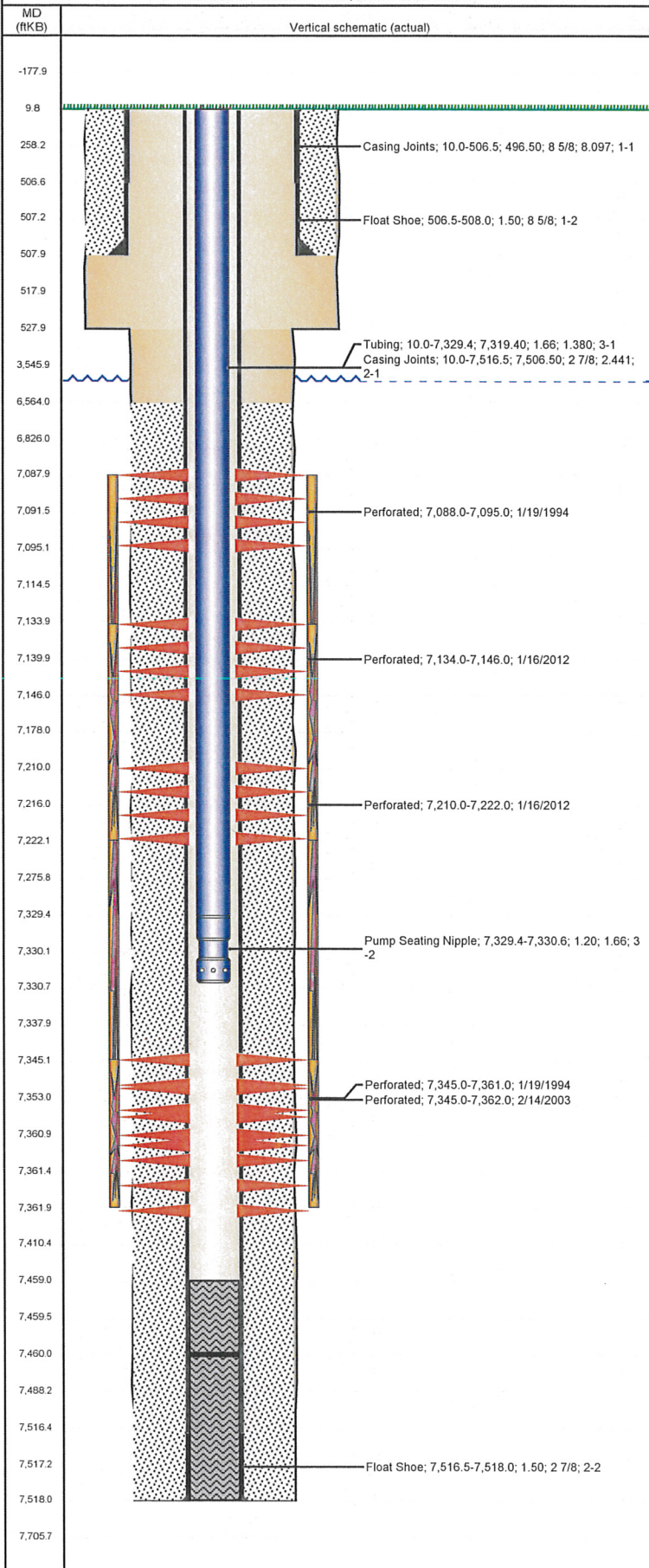


Well Name: KUIPERS RED V12-03

VERTICAL - ORIGINAL HOLE, 6/25/2012 2:33:33 PM



Well Header

API 05-123-17633	Business Unit WATTENBERG	District 15	Well Config VERTICAL
Original KB Elevation (ft) 4,842.00	KB - GL / MSL (ftKB) 10.00	Spud Date 1/11/1994	P & A Date

Comment

Directions To Well

CR 23 & CR 22 1/2 EAST 1/2 NORTH THROUGH GATE 3/10 EAST 500' INTO

Current PBTD (ftKB)

ORIGINAL HOLE - 7,460.0

Surface Location (Congressional)

Quarter 1	Quarter 2	Quarter 3	Quarter 4	Section	Township	Twnshp N...	Range	Rng E/W Dir
		NE	NW	12	2	N	67	W

Bottom Hole Location

North-South Distance (ft)	From N or S Line	East-West Distance (ft)	From E or W Line
---------------------------	------------------	-------------------------	------------------

Plug Back Total Depths

Date	Depth (ftKB)	Method	Com
1/17/1994	7,515.0	TAG	LATCH DOWN COLLAR
1/19/1994	7,459.0	CASED HOLE LOG	DEPTH LOGGER

Wellbore Sections

Section Des	Size (in)	Act Top (ftKB)	Act Btm (ftKB)
SURFACE	12 1/4	10.0	528.0
PRODUCTION	7 7/8	528.0	7,518.0

Zone Statuses

Zone Name	Status Date	Status	Job
CODELL	2/18/1994	PR	DRILLING/COMPLETION - ORIGINAL, 1/11/1994 00:00
CODELL	4/8/2003	PR	RE-FRAC, 2/12/2003 00:00
NIOBRARA	2/18/1994	PR	DRILLING/COMPLETION - ORIGINAL, 1/11/1994 00:00
NIOBRARA	1/25/2012	PR	RE-FRAC, 1/10/2012 06:00

Casing Strings

Csg Des	Run Date	OD (in)	W/Len (lb/ft)	Grade	Top (ftKB)	Set Depth (ftKB)
Surface	1/12/1994	8 5/8	24.00	?	10.0	508.0
Production	1/17/1994	2 7/8	6.50	N-80	10.0	7,518.0

Cement

Des	Top (ftKB)	Btm (ftKB)
SURFACE CASING CEMENT	10.0	508.0
PRODUCTION CASING CEMENT	6,564.0	7,518.0

Tubing Components

Item Des	OD (in)	Wt (lb/ft)	Grade	Jts	Len (ft)
Tubing	1.66	2.33	J-55	222	7,319.40
Pump Seating Nipple	1.66			1	1.20

Perforation Data

Zone	Bnch/St g	Entered Shot Total	Top (ftKB)	Btm (ftKB)	Date
NIOBRARA, ORIGINAL HOLE	B	7	7,088.0	7,095.0	1/19/1994
NIOBRARA, ORIGINAL HOLE		48	7,134.0	7,146.0	1/16/2012
NIOBRARA, ORIGINAL HOLE		48	7,210.0	7,222.0	1/16/2012
CODELL, ORIGINAL HOLE		72	7,345.0	7,362.0	2/14/2003
CODELL, ORIGINAL HOLE		15	7,345.0	7,361.0	1/19/1994

Stimulations & Treatments

Bnch/Stg	Date	Zone	Primary Job Type
	1/20/1994	NIOBRARA-CODELL, ORIGINAL HOLE	DRILLING/COMPLETION - ORIGINAL

Comment

FRAC'D CODELL / NIOBRARA LIMITED ENTRY

Total Add Amount	Total Clean Volume...	Vol Slurry Tot (gal)	Vol Gas Tot (MCF)
Proppant 300500 lb		105294.01	
Avg Treat Pressure (psi)	Max Treat Pressure (psi)	Avg Treat Rate (bbl/min)	Max Treat Rate (bbl/min)
5,300.0	5,590.0	20.00	22.00

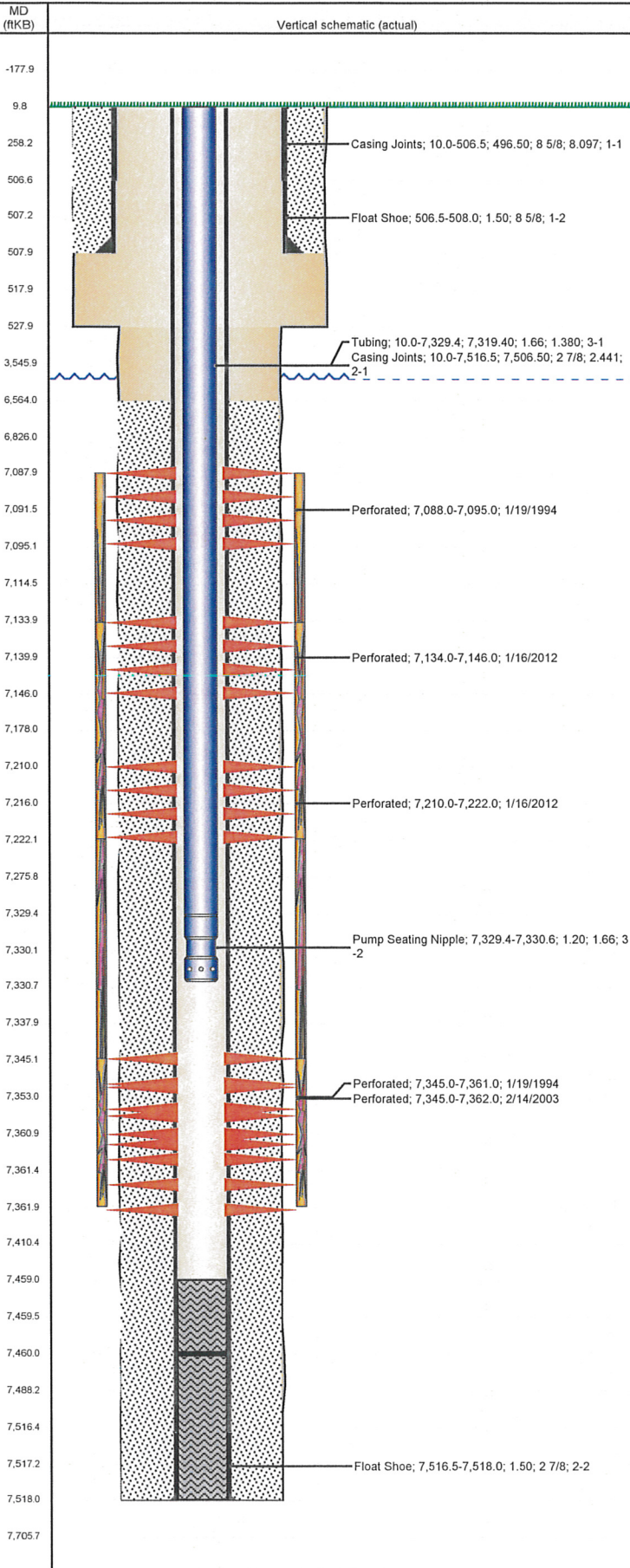
Bnch/Stg	Date	Zone	Primary Job Type
	2/25/2003	CODELL, ORIGINAL HOLE	RE-FRAC

Comment

Total Add Amount	Total Clean Volume...	Vol Slurry Tot (gal)	Vol Gas Tot (MCF)
Proppant Ottawa 246380 lb		128982.00	
Avg Treat Pressure (psi)	Max Treat Pressure (psi)	Avg Treat Rate (bbl/min)	Max Treat Rate (bbl/min)
4,734.0	4,949.0	14.60	15.50

Well Name: KUIPERS RED V12-03

VERTICAL - ORIGINAL HOLE, 6/25/2012 2:33:33 PM



Stimulations & Treatments

Bnch/Stg	Date	Zone	Primary Job Type
	1/18/2012	NIOBRARA, ORIGINAL HOLE	DRILLING/COMPLETION - ORIGINAL

Comment
TRUCK KICKED OUT DUE TO PRESSURE INCREASE. BLENDER SUCKED AIR DURING FRA PAD. HAD TO TAKE ONE PUMP TRUCK OFFLINE DURING 1 PSA. LOST POWER IN LAB VAN SO THE VISCOSITY AND TEMP NOT READING CORRECTLY. AVERAGE PH 10.54, VISCOSITY 17.1, TEMP 70.4.

Total Add Amount	Total Clean Volume...	Vol Slurry Tot (gal)	Vol Gas Tot (MCF)
Proppant Ottawa 245045 lb	152745.60	163833.61	
Avg Treat Pressure (psi)	Max Treat Pressure (psi)	Avg Treat Rate (bbl/min)	Max Treat Rate (bbl/min)
5,289.0	5,820.0	19.00	22.90

Other In Hole

Run Date	Des	OD (in)	Top (ftKB)	Btm (ftKB)

Logs

Date	Type	Top (ftKB)	Btm (ftKB)
1/16/1994	Compensated Density	6,685.0	7,520.0
1/16/1994	Induction	6,685.0	7,520.0
1/19/1994	CBL/CCL/GR	6,450.0	7,452.0