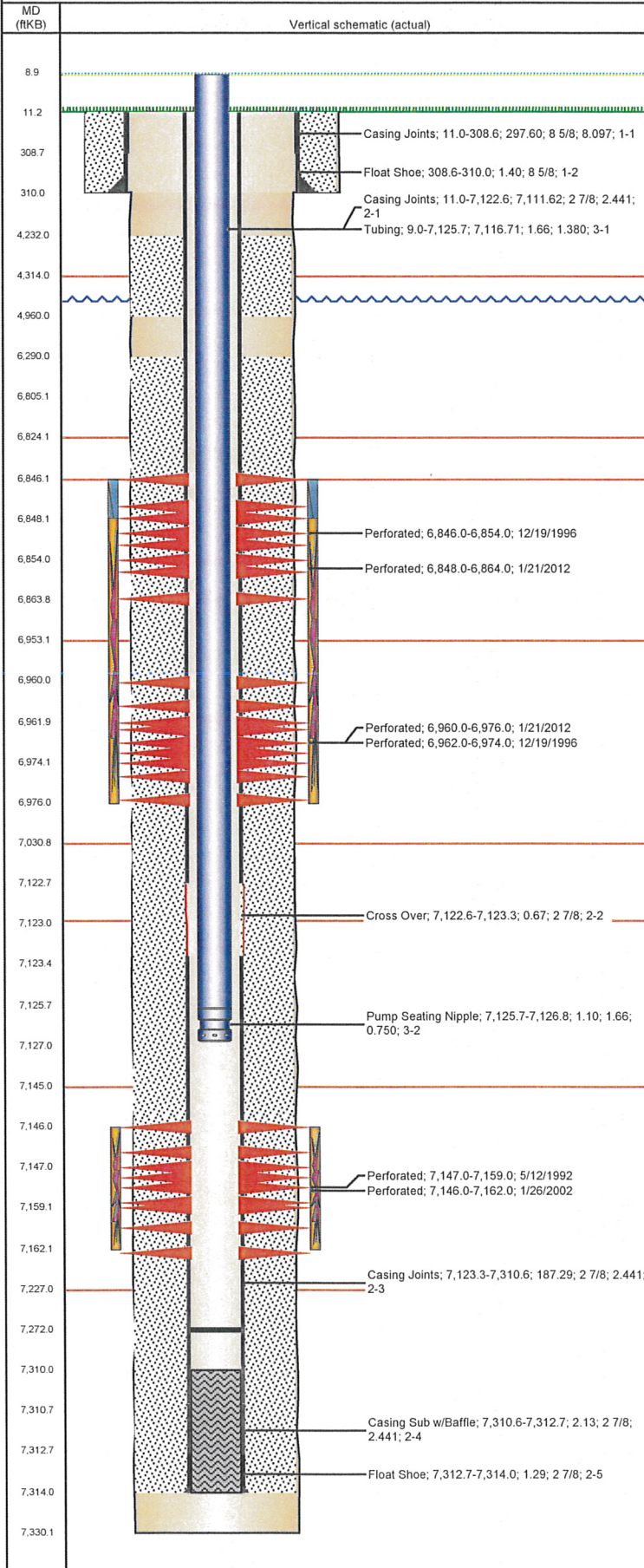


Well Name: DOROUGH G07-07

VERTICAL - ORIGINAL HOLE, 6/25/2012 2:06:51 PM



Well Header

API 05-123-15395	Business Unit WATTENBERG	District 15	Well Config VERTICAL
Original KB Elevation (ft) 4,703.00	KB - GL / MSL (ftKB) 11.00	Spud Date 5/4/1992	P & A Date

Comment
NIO MAGMA FIBER SQZ'D 1/25/2001 (33 BBLS) & 2/20/2007 (22 BBLS)

Directions To Well
CR 39 & CR 48 1/2 SOUTH .5 WEST 10' SOUTH .5 WEST .1 NORTH N/W .1 EAST INTO.

Current PBTD (ftKB)
ORIGINAL HOLE - 7,272.0

Surface Location (Congressional)

Quarter 1	Quarter 2	Quarter 3	Quarter 4	Section	Township	Twnshp N...	Range	Rng E/W Dir
		SW	NE	7	4	N	65	W

Bottom Hole Location

North-South Distance (ft)	From N or S Line	East-West Distance (ft)	From E or W Line

Plug Back Total Depths

Date	Depth (ftKB)	Method	Com
5/8/1992	7,310.0	CASING TALLY	GUIDE SHOE
5/12/1992	7,295.0	CASED HOLE LOG	DEPTH LOGGER

Wellbore Sections

Section Des	Size (in)	Act Top (ftKB)	Act Btm (ftKB)
SURFACE	12 1/4	11.0	310.0
PRODUCTION	7 7/8	310.0	7,330.0

Zone Statuses

Zone Name	Status Date	Status	Job
NIOBRARA	1/10/1997	PR	RECOMPLETION, 12/19/1996 00:00
NIOBRARA	1/21/1997	PR	RECOMPLETION, 12/19/1996 00:00
NIOBRARA	2/9/2012	PR	RE-FRAC, 1/19/2012 06:00
CODELL	7/7/1992	PR	DRILLING/COMPLETION - ORIGINAL, 5/4/1992 00:00
CODELL	1/21/1997	PR	RECOMPLETION, 12/19/1996 00:00
CODELL	1/30/2002	PR	RE-FRAC, 1/23/2002 00:00
CODELL	4/12/2007	PR	TRI-FRAC, 2/12/2007 00:00
CODELL	1/19/2012	SI	RE-FRAC, 1/19/2012 06:00

Casing Strings

Csg Des	Run Date	OD (in)	Wt/Len (lb/ft)	Grade	Top (ftKB)	Set Depth (ftKB)
Surface Casing	5/4/1992	8 5/8	24.00		11.0	310.0
Production	5/8/1992	2 7/8	8.70	N-80	11.0	7,314.0

Cement

Des	Top (ftKB)	Btm (ftKB)
SURFACE CASING CEMENT	11.0	310.0
PRODUCTION CASING CEMENT	4,232.0	4,960.0
PRODUCTION CASING CEMENT	6,290.0	7,314.0

Tubing Components

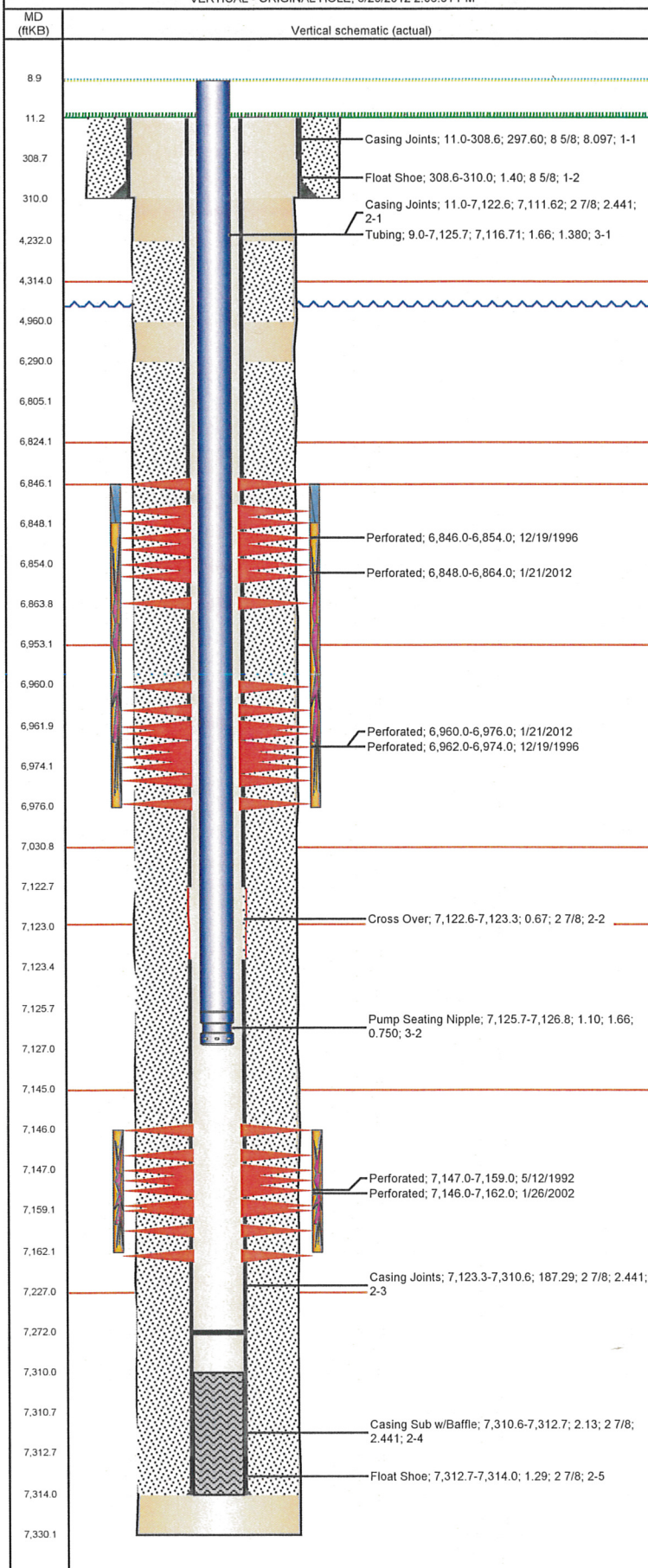
Item Des	OD (in)	Wt (lb/ft)	Grade	Jts	Len (ft)
Tubing	1.66	2.30	J-55	215	7,116.71
Pump Seating Nipple	1.66	2.30	J-55	1	1.10

Perforation Data

Zone	Bnch/St g	Entered Shot Total	Top (ftKB)	Btm (ftKB)	Date
NIOBRARA, ORIGINAL HOLE	A	8	6,846.0	6,854.0	12/19/1996
NIOBRARA, ORIGINAL HOLE		64	6,848.0	6,864.0	1/21/2012
NIOBRARA, ORIGINAL HOLE		64	6,960.0	6,976.0	1/21/2012
NIOBRARA, ORIGINAL HOLE	B	12	6,962.0	6,974.0	12/19/1996
CODELL, ORIGINAL HOLE		60	7,146.0	7,162.0	1/26/2002
CODELL, ORIGINAL HOLE		48	7,147.0	7,159.0	5/12/1992

Well Name: DOROUGH G07-07

VERTICAL - ORIGINAL HOLE, 6/25/2012 2:06:51 PM



Stimulations & Treatments

Bnch/Stg	Date	Zone	Primary Job Type
	5/13/1992	CODELL, ORIGINAL HOLE	DRILLING/COMPLETION - ORIGINAL
Comment			
Total Add Amount		Total Clean Volume...	Vol Slurry Tot (gal)
Proppant 201000 lb			64218.00
Vol Gas Tot (MCF)			
Avg Treat Pressure (psi)	Max Treat Pressure (psi)	Avg Treat Rate (bbl/min)	Max Treat Rate (bbl/min)
51,000.0	6,000.0	14.50	14.80
Bnch/Stg	Date	Zone	Primary Job Type
	12/23/1996	NIOBRARA, ORIGINAL HOLE	RECOMPLETION
Comment			
Total Add Amount		Total Clean Volume...	Vol Slurry Tot (gal)
Proppant 163300 lb			46200.00
Vol Gas Tot (MCF)			
Avg Treat Pressure (psi)	Max Treat Pressure (psi)	Avg Treat Rate (bbl/min)	Max Treat Rate (bbl/min)
	5,600.0	16.00	16.20
Bnch/Stg	Date	Zone	Primary Job Type
	1/29/2002	CODELL, ORIGINAL HOLE	RE-FRAC
Comment			
Total Add Amount		Total Clean Volume...	Vol Slurry Tot (gal)
Proppant Ottawa 244662 lb			130620.00
Vol Gas Tot (MCF)			
Avg Treat Pressure (psi)	Max Treat Pressure (psi)	Avg Treat Rate (bbl/min)	Max Treat Rate (bbl/min)
4,554.0	4,992.0	11.10	11.20
Bnch/Stg	Date	Zone	Primary Job Type
	2/19/2007	NIOBRARA, ORIGINAL HOLE	TRI-FRAC
Comment			
ACID WASH NIO PRIOR TO MAGMA FIBER SQZ			
Total Add Amount		Total Clean Volume...	Vol Slurry Tot (gal)
			499.80
Vol Gas Tot (MCF)			
Avg Treat Pressure (psi)	Max Treat Pressure (psi)	Avg Treat Rate (bbl/min)	Max Treat Rate (bbl/min)
Bnch/Stg	Date	Zone	Primary Job Type
	3/7/2007	CODELL, ORIGINAL HOLE	TRI-FRAC
Comment			
Total Add Amount		Total Clean Volume...	Vol Slurry Tot (gal)
Proppant Ottawa 248880 lb			130914.00
Vol Gas Tot (MCF)			
Avg Treat Pressure (psi)	Max Treat Pressure (psi)	Avg Treat Rate (bbl/min)	Max Treat Rate (bbl/min)
5,140.0	5,363.0	13.78	14.45
Bnch/Stg	Date	Zone	Primary Job Type
	2/7/2012	NIOBRARA, ORIGINAL HOLE	RE-FRAC
Comment			
(REFRAC NIO):DUE TO PSI WE DID NOT GET DESIRED RATE. LEFT 23,500 LBS OF SAND IN SAND MASTER STARTED TO SCREEN OUT 5 MIN SIP 3695			
Total Add Amount		Total Clean Volume...	Vol Slurry Tot (gal)
Proppant Ottawa 225497.802 lb			152600.70
Vol Gas Tot (MCF)			
Avg Treat Pressure (psi)	Max Treat Pressure (psi)	Avg Treat Rate (bbl/min)	Max Treat Rate (bbl/min)
4,758.0	6,555.0	14.50	15.80

Other In Hole

Run Date	Des	OD (in)	Top (ftKB)	Btm (ftKB)

Logs

Date	Type	Top (ftKB)	Btm (ftKB)
5/8/1992	COMPENSATED DENSITY	4,300.0	7,300.0
5/8/1992	INDUCTION	4,300.0	4,500.0
5/12/1992	CBL/CCL/GR	4,100.0	7,290.0