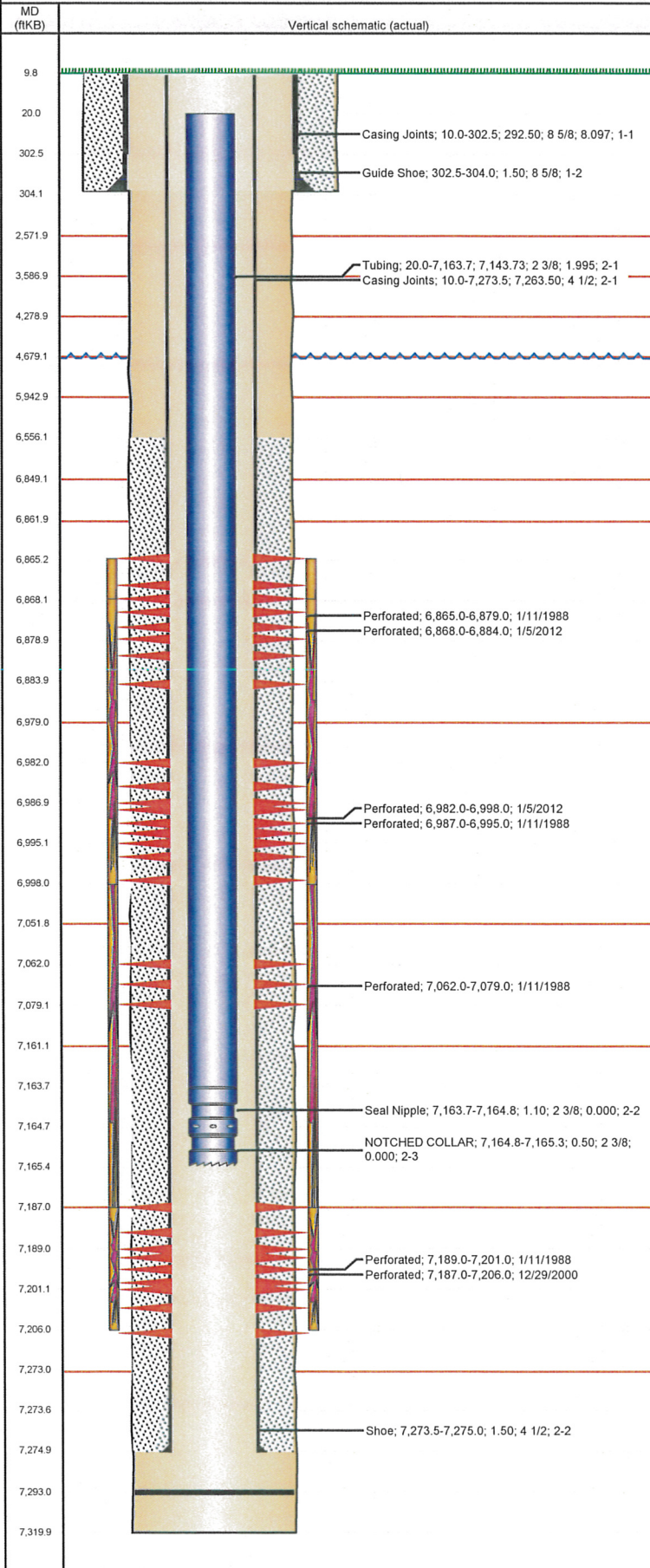


Well Name: KAMMERZELL 16-06

VERTICAL - ORIGINAL HOLE, 6/25/2012 1:11:04 PM



Well Header

API 05-123-13706	Business Unit WATTENBERG	District 15	Well Config VERTICAL
Original KB Elevation (ft) 4,724.00	KB - GL / MSL (ftKB) 10.00	Spud Date 12/30/1987	P & A Date
Comment			

Directions To Well

HWY-60 RD 25 EAST 4/10 NORTH 2/10 NE 1/10 THROUGH FARMERS YARD
NORTH SIDE OF BARN N/E 2/10 EAST 300' EAST INTO

Current PBTD (ftKB)

ORIGINAL HOLE - 7,293.0

Surface Location (Congressional)

Quarter 1	Quarter 2	Quarter 3	Quarter 4	Section	Township	Twship N...	Range	Rng E/W Dir
		SE	SE	6	4	N	66	W

Bottom Hole Location

North-South Distance (ft)	From N or S Line	East-West Distance (ft)	From E or W Line
---------------------------	------------------	-------------------------	------------------

Plug Back Total Depths

Date	Depth (ftKB)	Method	Com
1/11/1988	7,293.0	CASED HOLE LOG	DEPTH LOGGER
12/6/2005	7,221.0	TAG	FILL

Wellbore Sections

Section Des	Size (in)	Act Top (ftKB)	Act Btm (ftKB)
SURFACE	12 1/4	10.0	304.0
PRODUCTION	7 7/8	304.0	7,320.0

Zone Statuses

Zone Name	Status Date	Status	Job
NIOBRARA	3/7/1988	PR	DRILLING/COMPLETION - ORIGINAL, 12/30/1987 00:00
NIOBRARA	1/26/2012	PR	RE-FRAC, 1/3/2012 06:00
CODELL	3/7/1988	PR	DRILLING/COMPLETION - ORIGINAL, 12/30/1987 00:00
CODELL	1/18/2001	PR	RE-FRAC, 12/26/2000 00:00
CODELL	1/10/2006	PR	TRI-FRAC, 11/18/2005 00:00
CODELL	1/3/2012	SI	RE-FRAC, 1/3/2012 06:00

Casing Strings

Csg Des	Run Date	OD (in)	Wt/Len (lb/ft)	Grade	Top (ftKB)	Set Depth (ftKB)
Surface	12/30/1987	8 5/8	24.00	?	10.0	304.0
Production	1/7/1988	4 1/2	15.10		10.0	7,275.0

Cement

Des	Top (ftKB)	Btm (ftKB)
SURFACE CASING CEMENT	10.0	304.0
PRODUCTION CASING CEMENT	6,556.0	7,275.0

Tubing Components

Item Des	OD (in)	Wt (lb/ft)	Grade	Jts	Len (ft)
Tubing	2 3/8	4.70	J-55	232	7,143.73
Seal Nipple	2 3/8	0.00	X	1	1.10
NOTCHED COLLAR	2 3/8	4.70	J-55	1	0.50

Perforation Data

Zone	Bnch/St g	Entered Shot Total	Top (ftKB)	Btm (ftKB)	Date
NIOBRARA, ORIGINAL HOLE	A	4	6,865.0	6,879.0	1/11/1988
NIOBRARA, ORIGINAL HOLE		32	6,868.0	6,884.0	1/5/2012
NIOBRARA, ORIGINAL HOLE		32	6,982.0	6,998.0	1/5/2012
NIOBRARA, ORIGINAL HOLE	B	3	6,987.0	6,995.0	1/11/1988
NIOBRARA, ORIGINAL HOLE	C	3	7,062.0	7,079.0	1/11/1988
CODELL, ORIGINAL HOLE		76	7,187.0	7,206.0	12/29/2000
CODELL, ORIGINAL HOLE		4	7,189.0	7,201.0	1/11/1988

Well Name: KAMMERZELL 16-06

