

From: LSPermitco@aol.com
To: [Koepsell, Arthur](#)
Cc: bill.minnett@petersonenergy.com; LSPermitco@aol.com
Subject: Pathfinder 11-12 - Distance to Auge
Date: Monday, June 25, 2012 12:02:01 PM
Attachments: [Screenshot2012-06-25at10.15.41AM.pdf](#)
[Pathfinder 11-12 - Distance to Auge.pdf](#)

Arthur - see surveyors info below. Also I have attached some diagrams and maps. Auge's property is grey - Mountain Valley Ranch

Lisa,

Listed below are the distances you requested.

Northeast Corner of the Pad to the Northeast Corner of the NW 1/4 NW 1/4 of section 12 = 639'

Location Stake to the NW 1/4 NW 1/4 of section 12 = 963'

Any questions please call.

Thanks,

--

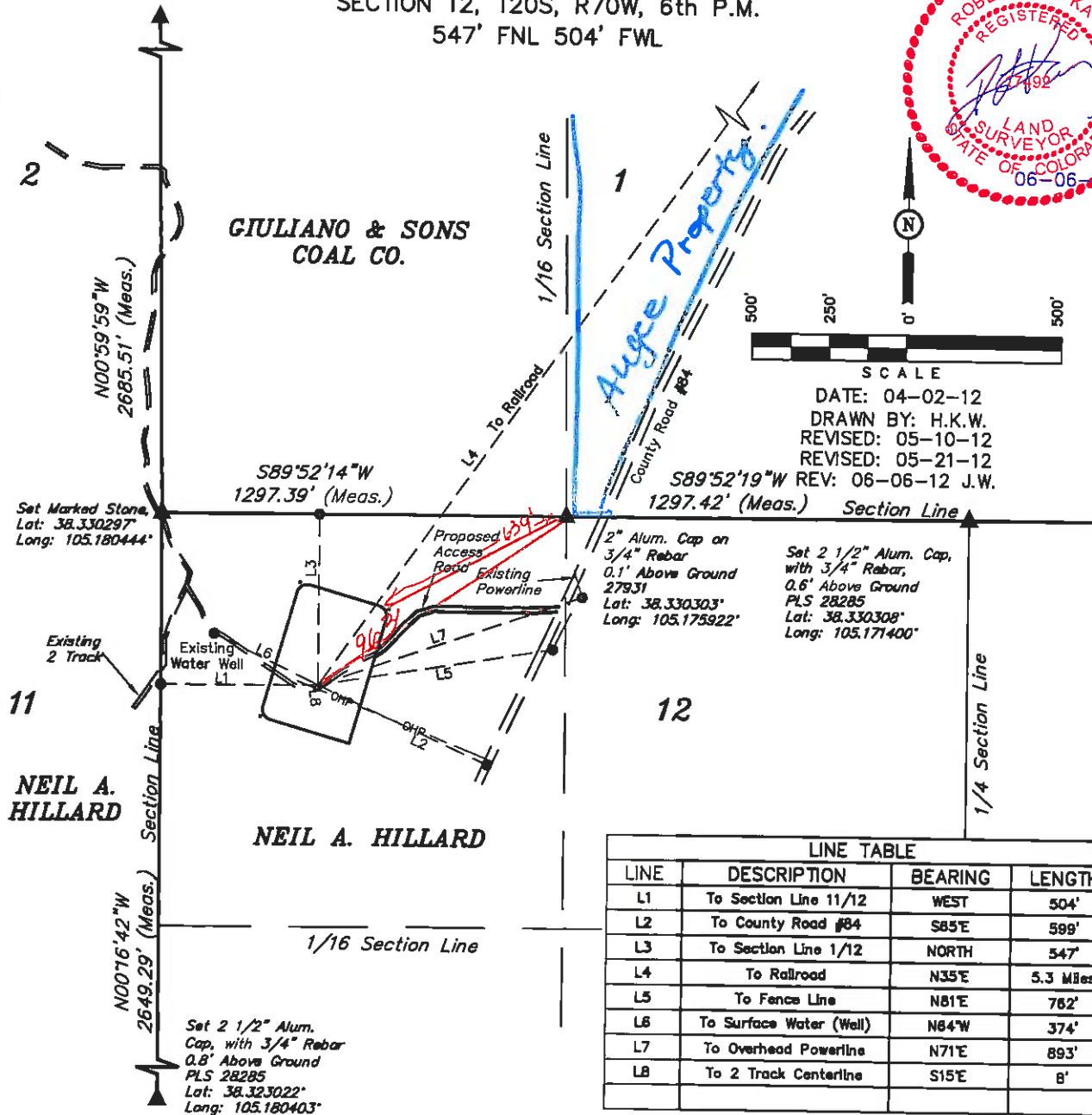
Chris Gardiner
Uintah Engineering LLC
Senior Drafter
Office: 435-789-1017
Cell: 435-828-0038
cgardiner@uintahgroup.com

*Lisa Smith - President
PermitCo Inc. - PO Box 99 - Eastlake, CO 80614
303-857-9999 (office) - 303-324-9350 (cell) - 303-450-9200 (fax)*

W 1/4 Cor. Sec. 1
Set 2 1/2" Alum. Cap,
on 3/4" Rebar,
1.0' Above Ground
PLS 28285
Lat: 38.337669°
Long: 105.180606°

AUS-TEX EXPLORATION, INC.
LOCATION DRAWING FOR
PATHFINDER C 11-12 #1
SECTION 12, T20S, R70W, 6th P.M.
547' FNL 504' FWL

FIGURE #5



LINE TABLE			
LINE	DESCRIPTION	BEARING	LENGTH
L1	To Section Line 11/12	WEST	504'
L2	To County Road #84	S85°E	589'
L3	To Section Line 1/12	NORTH	547'
L4	To Railroad	N35°E	5.3 Miles
L5	To Fence Line	N81°E	762'
L6	To Surface Water (Well)	N84°W	374'
L7	To Overhead Powerline	N71°E	893'
L8	To 2 Track Centerline	S15°E	8'

PLANT COMMUNITY

- ☐ DISTURBED GRASSLAND
- ☐ NATIVE GRASSLAND
- ☐ SHRUB LAND
- ☐ PLAINS RIPARIAN
- ☐ MOUNTAIN RIPARIAN
- ☐ FOREST LAND
- ☐ WETLANDS AQUATIC
- ☐ ALPINE
- ☐ OTHER (Describe): _____

CURRENT LAND USE

- CROP LAND: ☐ IRRIGATED ☐ DRY LAND ☐ IMPROVED PASTURE ☐ HAY MEADOW ☐ CRP
- NON-CROP LAND: ☐ RANGELAND ☐ TIMBER ☐ RECREATIONAL ☐ OTHER (Describe) _____
- SUBDIVIDED: ☐ INDUSTRIAL ☐ COMMERCIAL ☐ RESIDENTIAL

FUTURE LAND USE

- CROP LAND: ☐ IRRIGATED ☐ DRY LAND ☐ IMPROVED PASTURE ☐ HAY MEADOW ☐ CRP
- NON-CROP LAND: ☐ RANGELAND ☐ TIMBER ☐ RECREATIONAL ☐ OTHER (Describe) _____
- SUBDIVIDED: ☐ INDUSTRIAL ☐ COMMERCIAL ☐ RESIDENTIAL

UINTAH ENGINEERING & LAND SURVEYING
85 So. 200 East • Vernal, Utah 84078 • (435) 789-1017

