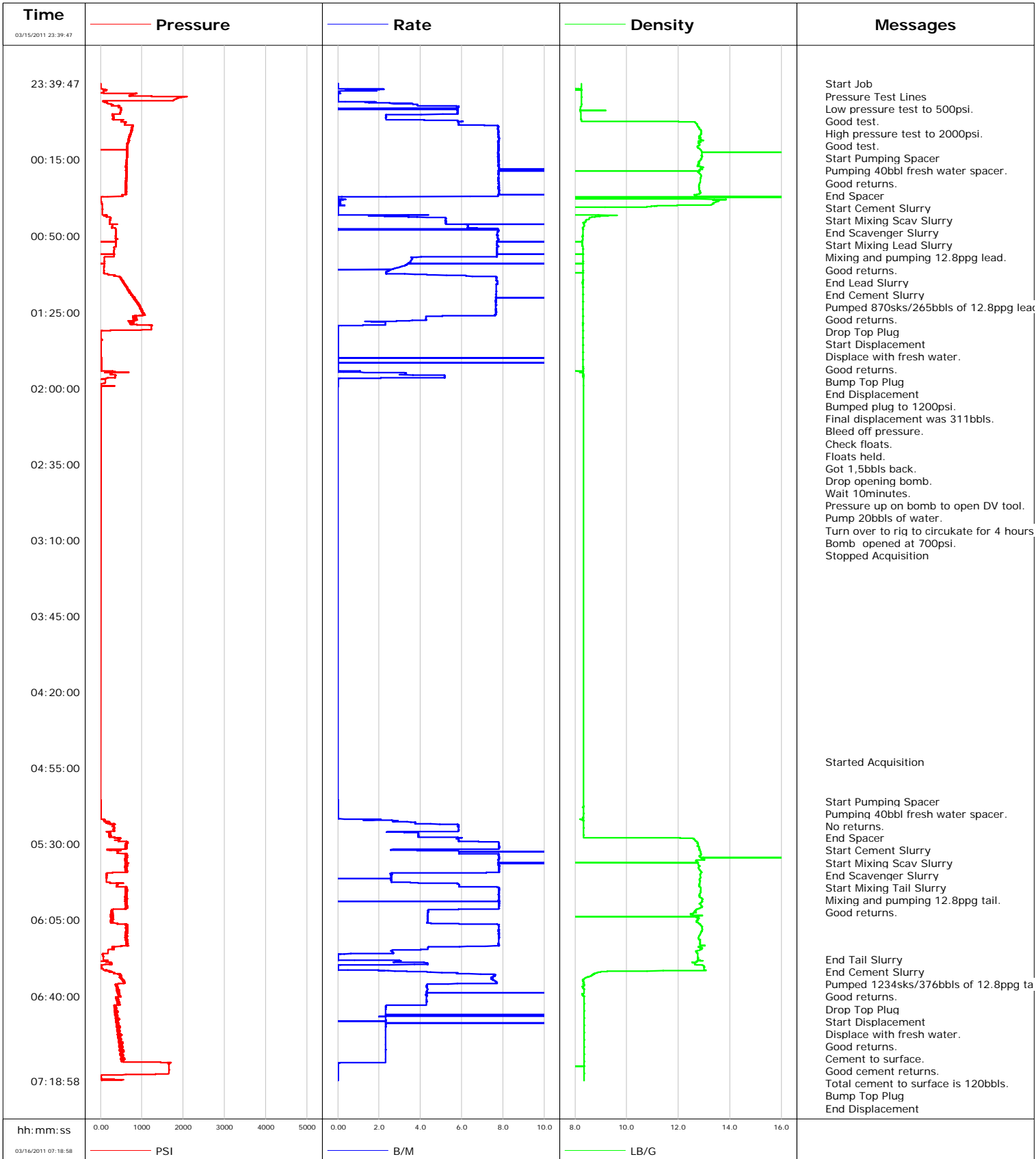


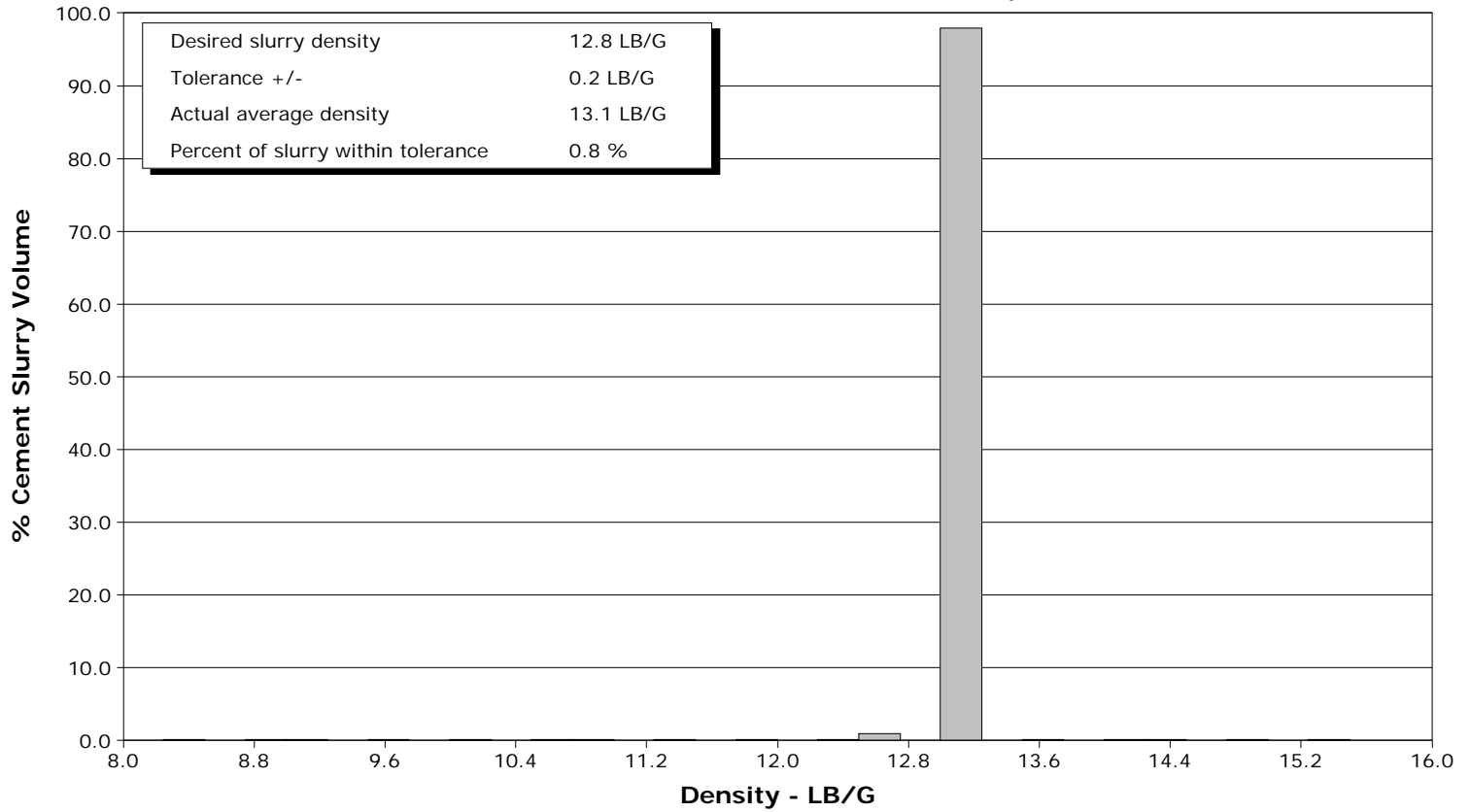
<b>Well</b>	RGU 41-25-198	<b>Client</b>	WILLIAMS
<b>Field</b>	RYAN GULCH	<b>SIR No.</b>	BP3Z-00030
<b>Engineer</b>	JEFF PATTERSON	<b>Job Type</b>	9 5/8" 2STAGE SURFACE
<b>Country</b>	United States	<b>Job Date</b>	03-16-2011



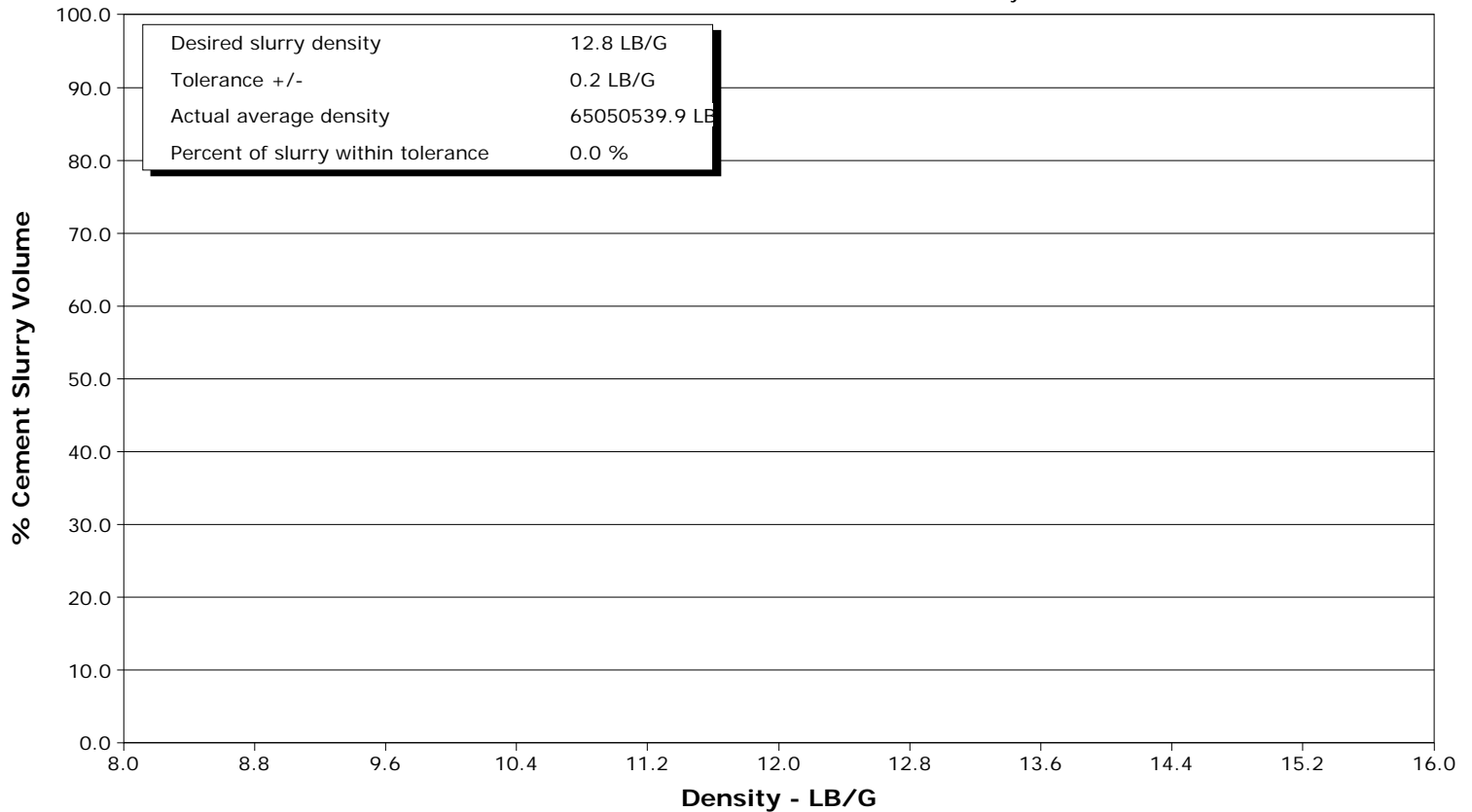
**Well** RGU 41-25-198  
**Field** RYAN GULCH  
**Engineer** JEFF PATTERSON  
**Country** United States

**Client** WILLIAMS  
**SIR No.** BP3Z-00030  
**Job Type** 9 5/8" 2STAGE SURFACE  
**Job Date** 03-16-2011

Lead Slurry - 03/15/2011 23:58:28 to 03/16/2011 00:31:15



Tail Slurry - 03/16/2011 05:29:42 to 03/16/2011 06:23:06





# Cementing Service Report

				Customer <b>WILLIAMS</b>			Job Number <b>BP3Z-00030</b>				
Well RGU 41-25-198 RGU 41-25-198			Location (legal)			Schlumberger Location GRAND JUNCTION, COLORADO			Job Start Mar/16/2011		
Field RYAN GULCH		Formation Name/Type SHALE		Deviation		Bit Size 14.8 in		Well MD 4069.0 ft		Well TVD 4069.0 ft	
County RIO BLANCO		State/Province Colorado		BHP		BHST 122 degF		BHCT 90 degF		Pore Press. Gradient	
Well Master 0631261390		API/UWI									
Rig Name CYCLONE 29		Drilled For Gas		Service Via Land		Casing/Liner					
						Depth, ft		Size, in		Weight, lb/ft	
						Grade		Thread			
Offshore Zone		Well Class New		Well Type Development		4069.0		9.630		36.0	
						0.0		0.000		0.0	
Drilling Fluid Type		Max. Density		Plastic Viscosity		Tubing/Drill Pipe					
						Depth,		Size,		Weight,	
						Grade		Thread			
Service Line Cementing		Job Type 9 5/8" 2STAGE SURFACE									
Max. Allowed Tub. Press 3000 psi		Max. Allowed Ann. Press		WH Connection 9 5/8" CEMENT HEAD		Perforations/Open Hole					
						Top,		Bottom,		No. of Shots	
						Total Interval					
										Diameter	
						Treat Down Casing		Displacement 311.0 bbl		Packer Type	
						Packer Depth					
						Tubing Vol.		Casing Vol. 314.0 bbl		Annular Vol. 271.0 bbl	
						Openhole Vol. 652.0 bbl					
Casing/Tubing Secured <input checked="" type="checkbox"/>		1 Hole Vol. Circulated prior to Cement <input checked="" type="checkbox"/>		Casing Tools				Squeeze Job			
Lift Pressure 2013 psi		Shoe Type Guide		Shoe Depth 4069.0 ft				Squeeze Type			
Pipe Rotated <input type="checkbox"/>		Pipe Reciprocated <input type="checkbox"/>		Stage Tool Type DV				Tool Depth			
No. Centralizers		Top Plugs 1		Bottom Plugs		Stage Tool Depth 1837.0 ft				Tail Pipe Size	
Cement Head Type Single		Collar Type Float		Collar Depth 4026.0 ft				Tail Pipe Depth			
Job Scheduled For Mar/16/2011		Arrived on Location Mar/16/2011		Leave Location Mar/16/2011		Sqz. Total Vol.					
Date	Time 24-hr clock	Treating Pressure PSI	Flow Rate B/M	Density LB/G	Volume BBL	Message					
03/15/2011	23:18:13					Started Acquisition					
03/15/2011	23:39:47	-7	0.0	8.26	0.0						
03/15/2011	23:39:48					Start Job					
03/15/2011	23:39:48	-6	0.0	8.26	0.0						
03/15/2011	23:39:50					Pressure Test Lines					
03/15/2011	23:39:50	-7	0.0	8.26	0.0						
03/15/2011	23:39:52					Low pressure test to 500psi.					
03/15/2011	23:39:52					Good test.					
03/15/2011	23:39:52					High pressure test to 2000psi.					
03/15/2011	23:39:52	-6	0.0	8.26	0.0						
03/15/2011	23:39:53					Good test.					
03/15/2011	23:39:53	-6	0.0	8.26	0.0						
03/15/2011	23:39:56					Start Pumping Spacer					
03/15/2011	23:39:56	-6	0.0	8.26	0.0						
03/15/2011	23:39:57					Pumping 40bbl fresh water spacer.					
03/15/2011	23:39:57	-6	0.0	8.26	0.0						
03/15/2011	23:39:58					Good returns.					
03/15/2011	23:39:58	-6	0.0	8.26	0.0						
03/15/2011	23:41:33	-6	0.0	8.25	0.0						
03/15/2011	23:43:13	116	1.8	8.24	1.8						
03/15/2011	23:44:53	760	0.0	8.25	2.0						

Well		Field		Job Start		Customer		Job Number	
RGU 41-25-198 RGU 41-25-198		RYAN GULCH		Mar/16/2011		WILLIAMS		BP3Z-00030	
Date	Time 24-hr clock	Treating Pressure PSI	Flow Rate B/M	Density LB/G	Volume BBL	Message			
03/15/2011	23:48:13	98	0.4	8.25	2.0				
03/15/2011	23:49:53	285	3.9	8.24	6.7				
03/15/2011	23:51:33	494	0.0	8.21	13.9				
03/15/2011	23:53:13	476	5.8	8.22	22.6				
03/15/2011	23:54:53	290	2.3	8.23	29.5				
03/15/2011	23:56:33	306	2.3	8.24	33.4				
03/15/2011	23:57:25					End Spacer			
03/15/2011	23:57:25	501	5.9	12.40	38.0				
03/15/2011	23:57:26					Start Cement Slurry			
03/15/2011	23:57:26	561	5.9	12.40	38.1				
03/15/2011	23:57:27					Start Mixing Scav Slurry			
03/15/2011	23:57:27	561	5.9	12.55	38.2				
03/15/2011	23:58:13	594	5.9	12.70	42.7				
03/15/2011	23:58:27					End Scavenger Slurry			
03/15/2011	23:58:27	596	5.9	12.72	44.0				
03/15/2011	23:58:28					Start Mixing Lead Slurry			
03/15/2011	23:58:28	596	5.9	12.72	44.1				
03/15/2011	23:58:30					Mixing and pumping 12.8ppg lead.			
03/15/2011	23:58:30	596	5.9	12.73	44.3				
03/15/2011	23:58:31					Good returns.			
03/15/2011	23:58:31	599	5.9	12.73	44.4				
03/15/2011	23:59:53	780	7.8	12.79	54.1				
03/16/2011	00:01:33	764	7.8	12.90	67.0				
03/16/2011	00:03:13	744	7.8	12.89	80.0				
03/16/2011	00:04:53	691	7.8	12.88	93.0				
03/16/2011	00:06:33	672	7.8	12.81	106.0				
03/16/2011	00:08:13	647	7.8	12.84	119.0				
03/16/2011	00:09:53	633	7.8	12.83	132.0				
03/16/2011	00:11:33	658	7.8	12.93	144.9				
03/16/2011	00:13:13	642	7.8	12.91	157.9				
03/16/2011	00:14:53	630	7.8	12.87	170.9				
03/16/2011	00:16:33	626	7.8	12.79	183.9				
03/16/2011	00:18:13	630	7.8	12.90	196.9				
03/16/2011	00:19:53	629	7.8	12.80	213.2				
03/16/2011	00:21:33	625	7.8	12.86	229.4				
03/16/2011	00:23:13	627	7.8	12.87	242.4				
03/16/2011	00:24:53	623	7.8	12.86	255.4				
03/16/2011	00:26:33	617	7.8	12.82	268.4				
03/16/2011	00:28:13	626	7.8	12.80	281.2				
03/16/2011	00:29:53	617	7.8	12.85	294.2				
03/16/2011	00:31:15					End Lead Slurry			
03/16/2011	00:31:15	529	7.8	12.65	309.7				
03/16/2011	00:31:16					End Cement Slurry			
03/16/2011	00:31:16	536	7.8	12.65	309.9				
03/16/2011	00:31:17					Pumped 870sks/265bbbls of 12.8ppg lead.			
03/16/2011	00:31:17					Good returns.			
03/16/2011	00:31:17	536	7.8	12.66	310.0				
03/16/2011	00:31:20					Drop Top Plug			
03/16/2011	00:31:20	534	7.8	12.67	310.4				
03/16/2011	00:31:21					Start Displacement			
03/16/2011	00:31:21	534	7.8	12.68	310.5				
03/16/2011	00:31:22					Displace with fresh water.			
03/16/2011	00:31:22	542	7.8	12.69	310.6				
03/16/2011	00:31:23					Good returns.			

Well		Field		Job Start		Customer		Job Number	
RGU 41-25-198 RGU 41-25-198		RYAN GULCH		Mar/16/2011		WILLIAMS		BP3Z-00030	
Date	Time 24-hr clock	Treating Pressure PSI	Flow Rate B/M	Density LB/G	Volume BBL	Message			
03/16/2011	00:31:33	531	7.8	12.70	312.1				
03/16/2011	00:33:13	-6	0.4	13.84	314.9				
03/16/2011	00:34:53	32	0.0	13.38	315.0				
03/16/2011	00:36:33	41	0.0	10.86	315.1				
03/16/2011	00:38:13	41	0.0	0.07	315.1				
03/16/2011	00:39:53	43	0.0	0.07	315.1				
03/16/2011	00:41:33	240	5.1	8.60	318.7				
03/16/2011	00:43:13	233	5.2	8.43	327.4				
03/16/2011	00:44:53	285	6.3	8.35	341.7				
03/16/2011	00:46:33	368	7.6	8.30	352.3				
03/16/2011	00:48:13	379	7.7	8.31	361.4				
03/16/2011	00:49:53	375	7.8	8.31	374.3				
03/16/2011	00:51:33	381	7.8	8.31	387.2				
03/16/2011	00:53:13	371	7.7	8.29	406.5				
03/16/2011	00:54:53	374	7.7	8.31	419.4				
03/16/2011	00:56:33	329	7.7	8.31	432.2				
03/16/2011	00:58:13	329	7.7	8.31	445.1				
03/16/2011	00:59:53	94	3.6	8.31	464.2				
03/16/2011	01:01:33	93	3.6	8.31	470.2				
03/16/2011	01:03:13	92	3.4	8.31	483.4				
03/16/2011	01:04:53	84	2.8	8.31	488.6				
03/16/2011	01:06:33	84	2.4	8.31	492.8				
03/16/2011	01:08:13	336	6.1	8.31	498.1				
03/16/2011	01:09:53	498	7.7	8.31	510.6				
03/16/2011	01:11:33	572	7.7	8.30	523.5				
03/16/2011	01:13:13	617	7.7	8.31	536.4				
03/16/2011	01:14:53	657	7.7	8.31	549.2				
03/16/2011	01:16:33	745	7.7	8.31	562.0				
03/16/2011	01:18:13	790	7.7	8.31	574.8				
03/16/2011	01:19:53	876	7.7	8.31	596.5				
03/16/2011	01:21:33	917	7.7	8.31	609.3				
03/16/2011	01:23:13	967	7.7	8.31	621.8				
03/16/2011	01:24:53	1022	7.7	8.30	635.7				
03/16/2011	01:26:33	1046	7.6	8.31	648.2				
03/16/2011	01:28:13	855	4.3	8.30	656.2				
03/16/2011	01:29:53	789	2.3	8.30	661.7				
03/16/2011	01:31:07					Bump Top Plug			
03/16/2011	01:31:07	1190	2.3	8.30	664.5				
03/16/2011	01:31:08					End Displacement			
03/16/2011	01:31:08	1190	2.1	8.30	664.6				
03/16/2011	01:31:10					Bumped plug to 1200psi.			
03/16/2011	01:31:10					Final displacement was 311bbbls.			
03/16/2011	01:31:10	1239	1.6	8.30	664.6				
03/16/2011	01:31:11					Bleed off pressure.			
03/16/2011	01:31:11					Check floats.			
03/16/2011	01:31:11					Floats held.			
03/16/2011	01:31:11	1249	1.2	8.30	664.6				
03/16/2011	01:31:12					Got 1,5bbbls back.			
03/16/2011	01:31:12					Drop opening bomb.			
03/16/2011	01:31:12					Wait 10minutes.			
03/16/2011	01:31:12					Pressure up on bomb to open DV tool.			
03/16/2011	01:31:12					Pump 20bbbls of water.			
03/16/2011	01:31:12	1262	1.2	8.30	664.7				
03/16/2011	01:31:14					Turn over to rig to circukate for 4 hours.			

Well		Field		Job Start		Customer		Job Number	
RGU 41-25-198 RGU 41-25-198		RYAN GULCH		Mar/16/2011		WILLIAMS		BP3Z-00030	
Date	Time 24-hr clock	Treating Pressure PSI	Flow Rate B/M	Density LB/G	Volume BBL	Message			
03/16/2011	01:31:14	1237	0.8	8.30	664.7				
03/16/2011	01:31:33	1237	0.0	8.30	664.7				
03/16/2011	01:33:13	1127	0.0	8.31	664.7				
03/16/2011	01:34:53	-6	0.0	8.31	664.7				
03/16/2011	01:36:33	-6	0.0	8.31	664.7				
03/16/2011	01:38:13	-0	0.0	8.31	664.7				
03/16/2011	01:39:53	0	0.0	8.31	664.7				
03/16/2011	01:41:33	7	0.0	8.31	664.7				
03/16/2011	01:43:13	9	0.0	8.32	664.7				
03/16/2011	01:44:53	11	0.0	8.32	664.7				
03/16/2011	01:46:33	13	0.0	8.32	675.1				
03/16/2011	01:48:13	15	0.0	8.32	675.1				
03/16/2011	01:49:53	17	0.0	8.32	685.5				
03/16/2011	01:51:33	19	0.0	8.32	685.5				
03/16/2011	01:53:13	264	3.3	8.31	686.8				
03/16/2011	01:54:53	356	5.2	8.32	693.8				
03/16/2011	01:56:33	118	0.0	8.32	696.8				
03/16/2011	01:58:13	-3	0.0	8.33	696.8				
03/16/2011	05:09:53	3	0.0	8.33	0.0				
03/16/2011	05:10:14					Start Pumping Spacer			
03/16/2011	05:10:14	3	0.0	8.33	0.0				
03/16/2011	05:10:18					Pumping 40bbl fresh water spacer.			
03/16/2011	05:10:18	3	0.0	8.33	0.0				
03/16/2011	05:10:19					No returns.			
03/16/2011	05:10:19	3	0.0	8.33	0.0				
03/16/2011	05:11:33	3	0.0	8.33	0.0				
03/16/2011	05:13:13	3	0.0	8.33	0.0				
03/16/2011	05:14:53	3	0.0	8.33	0.0				
03/16/2011	05:16:33	2	0.0	8.33	0.0				
03/16/2011	05:18:13	1	0.0	8.33	0.0				
03/16/2011	05:19:53	158	3.1	8.34	3.1				
03/16/2011	05:21:33	325	5.9	8.33	10.7				
03/16/2011	05:23:13	312	5.9	8.33	20.4				
03/16/2011	05:24:53	208	3.9	8.33	28.4				
03/16/2011	05:26:33	224	3.9	8.33	34.9				
03/16/2011	05:27:18					End Spacer			
03/16/2011	05:27:18	382	5.9	11.91	38.5				
03/16/2011	05:27:20					Start Cement Slurry			
03/16/2011	05:27:20					Start Mixing Scav Slurry			
03/16/2011	05:27:20	486	5.9	12.09	38.7				
03/16/2011	05:28:13	456	5.9	12.66	43.9				
03/16/2011	05:29:41					End Scavenger Slurry			
03/16/2011	05:29:41	641	7.8	12.76	53.6				
03/16/2011	05:29:42					Start Mixing Tail Slurry			
03/16/2011	05:29:42	621	7.8	12.76	53.7				
03/16/2011	05:29:44					Mixing and pumping 12.8ppg tail.			
03/16/2011	05:29:44					Good returns.			
03/16/2011	05:29:44	636	7.8	12.76	54.0				
03/16/2011	05:29:53	627	7.8	12.75	55.2				
03/16/2011	05:31:33	626	7.8	12.82	68.2				
03/16/2011	05:33:13	416	5.8	12.86	77.6				
03/16/2011	05:34:53	645	7.8	12.91	803.9				
03/16/2011	05:36:33	641	7.8	12.95	816.9				
03/16/2011	05:38:13	619	7.8	12.74	829.9				

Well		Field		Job Start		Customer		Job Number	
RGU 41-25-198 RGU 41-25-198		RYAN GULCH		Mar/16/2011		WILLIAMS		BP3Z-00030	
Date	Time 24-hr clock	Treating Pressure PSI	Flow Rate B/M	Density LB/G	Volume BBL	Message			
03/16/2011	05:41:33	625	7.8	12.81	859.6				
03/16/2011	05:43:13	649	7.8	12.91	872.7				
03/16/2011	05:44:53	152	2.6	12.87	877.6				
03/16/2011	05:46:33	144	2.6	12.82	881.8				
03/16/2011	05:48:13	407	5.7	12.83	886.9				
03/16/2011	05:49:53	633	7.4	12.85	896.5				
03/16/2011	05:51:33	609	7.8	12.87	909.5				
03/16/2011	05:53:13	640	7.8	12.83	922.6				
03/16/2011	05:54:53	612	7.8	12.89	935.6				
03/16/2011	05:56:33	621	0.0	12.93	948.5				
03/16/2011	05:58:13	617	7.8	12.88	961.4				
03/16/2011	05:59:53	626	7.8	12.82	974.4				
03/16/2011	06:01:33	287	4.4	12.65	982.8				
03/16/2011	06:03:13	284	4.4	12.82	990.1				
03/16/2011	06:04:53	293	4.4	12.78	997.3				
03/16/2011	06:06:33	288	4.3	12.79	1004.6				
03/16/2011	06:08:13	621	7.8	12.93	1016.7				
03/16/2011	06:09:53	624	7.8	12.93	1029.7				
03/16/2011	06:11:33	645	7.8	12.86	1042.7				
03/16/2011	06:13:13	610	7.8	12.79	1055.7				
03/16/2011	06:14:53	631	7.8	12.86	1068.7				
03/16/2011	06:16:33	641	7.8	12.84	1081.7				
03/16/2011	06:18:13	315	4.4	12.93	1091.4				
03/16/2011	06:19:53	179	2.7	12.71	1096.8				
03/16/2011	06:21:33	62	0.0	12.77	1098.7				
03/16/2011	06:23:06					End Tail Slurry			
03/16/2011	06:23:06	68	0.0	12.77	1098.7				
03/16/2011	06:23:07					End Cement Slurry			
03/16/2011	06:23:07	68	0.0	12.77	1098.7				
03/16/2011	06:23:09					Pumped 1234sks/376bbbls of 12.8ppg tail.			
03/16/2011	06:23:09					Good returns.			
03/16/2011	06:23:09	68	0.0	12.77	1098.7				
03/16/2011	06:23:11					Drop Top Plug			
03/16/2011	06:23:11	67	0.0	12.77	1098.7				
03/16/2011	06:23:12					Start Displacement			
03/16/2011	06:23:12	66	0.0	12.77	1098.7				
03/16/2011	06:23:13	66	0.0	12.77	1098.7				
03/16/2011	06:24:53	214	4.4	12.64	1102.8				
03/16/2011	06:26:33	21	0.0	13.01	1106.3				
03/16/2011	06:28:13	151	1.7	13.06	1106.3				
03/16/2011	06:29:53	453	5.8	8.72	1113.5				
03/16/2011	06:31:33	497	7.4	8.43	1126.0				
03/16/2011	06:33:13	559	7.6	8.30	1138.6				
03/16/2011	06:34:53	405	4.3	8.37	1149.7				
03/16/2011	06:35:30					Displace with fresh water.			
03/16/2011	06:35:30					Good returns.			
03/16/2011	06:35:30	397	4.4	8.32	1152.4				
03/16/2011	06:36:33	427	4.3	8.32	1156.9				
03/16/2011	06:36:39					Cement to surface.			
03/16/2011	06:36:39	403	4.3	8.32	1157.3				
03/16/2011	06:36:40					Good cement returns.			
03/16/2011	06:36:40	402	4.3	8.32	1157.4				
03/16/2011	06:36:59					Total cement to surface is 120bbbls.			
03/16/2011	06:36:59	415	4.4	8.35	1158.8				

Well		Field		Job Start		Customer		Job Number	
RGU 41-25-198 RGU 41-25-198		RYAN GULCH		Mar/16/2011		WILLIAMS		BP3Z-00030	
Date	Time 24-hr clock	Treating Pressure PSI	Flow Rate B/M	Density LB/G	Volume BBL	Message			
03/16/2011	06:39:53	427	4.3	8.30	1178.7				
03/16/2011	06:41:33	415	4.3	8.35	1185.9				
03/16/2011	06:43:13	419	4.3	8.35	1193.0				
03/16/2011	06:44:53	337	2.3	8.35	1199.1				
03/16/2011	06:46:33	347	2.3	8.35	1202.9				
03/16/2011	06:48:13	386	2.3	8.35	1206.8				
03/16/2011	06:49:53	404	2.3	8.35	1226.6				
03/16/2011	06:51:33	420	2.3	8.35	1230.5				
03/16/2011	06:53:13	417	2.3	8.35	1242.5				
03/16/2011	06:54:53	429	2.3	8.35	1246.3				
03/16/2011	06:56:33	475	2.3	8.35	1250.2				
03/16/2011	06:58:13	458	2.3	8.35	1254.1				
03/16/2011	06:59:53	436	2.3	8.35	1258.0				
03/16/2011	07:01:33	445	2.3	8.35	1261.8				
03/16/2011	07:03:13	528	2.3	8.35	1265.7				
03/16/2011	07:04:53	551	2.3	8.35	1269.6				
03/16/2011	07:06:33	501	2.3	8.35	1273.4				
03/16/2011	07:08:13	505	2.3	8.35	1277.3				
03/16/2011	07:09:53	519	2.3	8.35	1281.2				
03/16/2011	07:11:33	1662	0.0	8.35	1283.3				
03/16/2011	07:13:13	1657	0.0	8.35	1283.3				
03/16/2011	07:13:14					Bump Top Plug			
03/16/2011	07:13:14	1657	0.0	8.35	1283.3				
03/16/2011	07:13:15					End Displacement			
03/16/2011	07:13:15	1657	0.0	8.35	1283.3				
03/16/2011	07:13:16					Bumped plug to 1650psi.			
03/16/2011	07:13:16	1657	0.0	8.35	1283.3				
03/16/2011	07:13:17					Final displacement was 142bbbls.			
03/16/2011	07:13:17					Bleed off pressure.			
03/16/2011	07:13:17					Check that DV tool closes.			
03/16/2011	07:13:17	1657	0.0	8.35	1283.3				
03/16/2011	07:13:18					DV tool closed.			
03/16/2011	07:13:18					Got 1bbl back.			
03/16/2011	07:13:18					Good cement to surface.			
03/16/2011	07:13:18					total of 120bbbls.			
03/16/2011	07:13:18	1657	0.0	8.35	1283.3				
03/16/2011	07:13:19					Wait to see if topout is needed.			
03/16/2011	07:13:19	1657	0.0	8.35	1283.3				
03/16/2011	07:14:53	1658	0.0	8.36	1283.3				
03/16/2011	07:16:33	173	0.0	8.36	1283.3				
03/16/2011	07:18:13	33	0.0	8.36	1283.3				

<b>Well</b> RGU 41-25-198 RGU 41-25-198	<b>Field</b> RYAN GULCH	<b>Job Start</b> Mar/16/2011	<b>Customer</b> WILLIAMS	<b>Job Number</b> BP3Z-00030
--	----------------------------	---------------------------------	-----------------------------	---------------------------------

### Post Job Summary

Average Pump Rates, bbl/min					Volume of Fluid Injected, bbl			
Slurry 7.0	N2	Mud	Maximum Rate 8.0	Total Slurry 641.0	Mud	Spacer 40.0	N2	
Treating Pressure Summary, psi					Breakdown Fluid			
Maximum 3000	Final 1650	Average 600	Bump Plug to 1650	Breakdown	Type	Volume	Density	
Avg. N2 Percent	Designed Slurry Volume 641.0 bbl	Displacement 311.0 bbl	Mix Water Temp 80 degF	Cement Circulated to Surface? <input checked="" type="checkbox"/>	Volume 120.0 bbl	Washed Thru Perfs <input type="checkbox"/>	To	
Customer or Authorized Representative ANDREW BRUNK			Schlumberger Supervisor JEFF PATTERSON		Circulation Lost <input type="checkbox"/>	Job Completed <input checked="" type="checkbox"/>		
					-	-		