

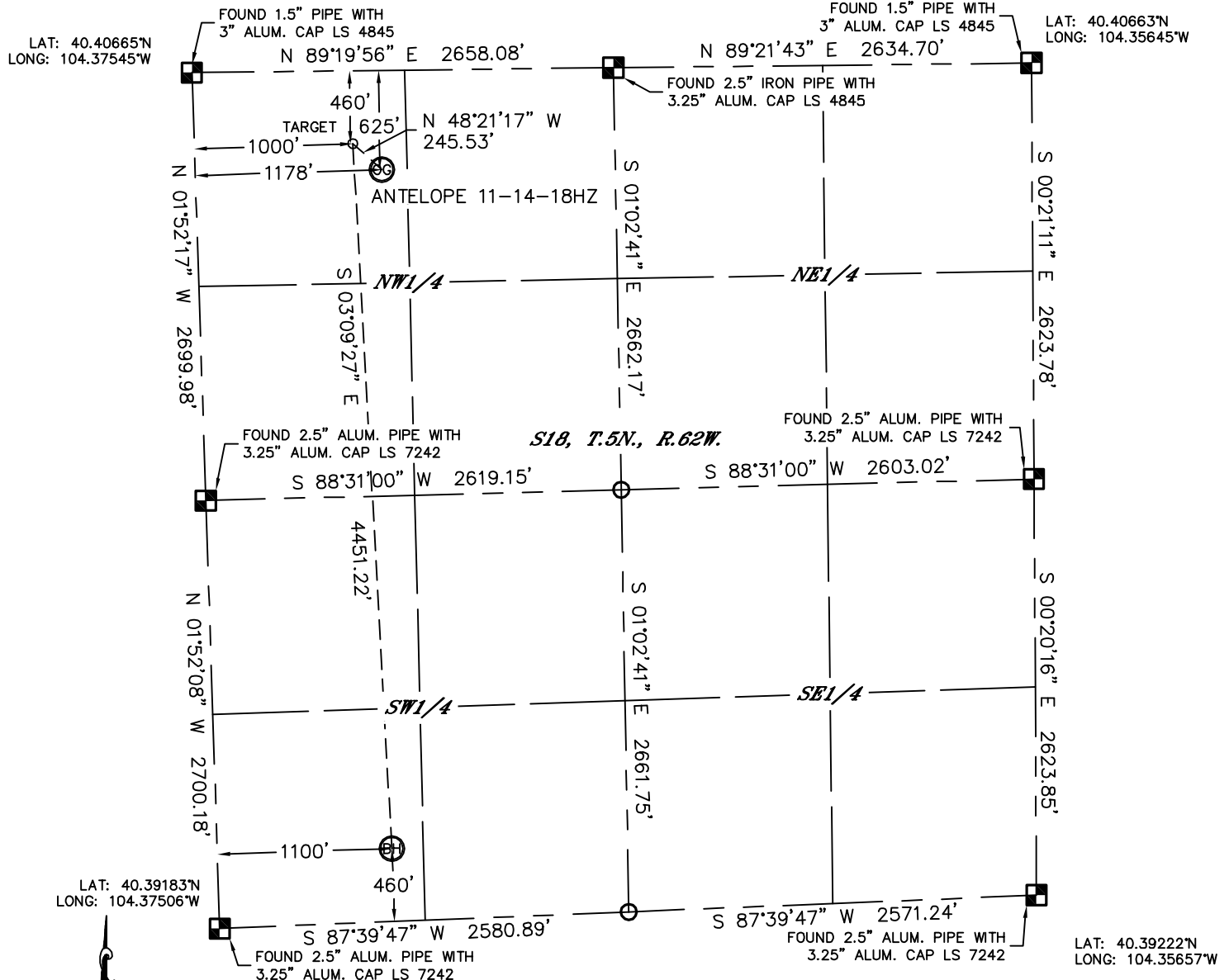


Lat40°, Inc. 1635 Foxtrail Drive, Suite 325 Loveland, CO 970-776-3321

WELL LOCATION CERTIFICATE

THIS MAP DOES NOT REPRESENT A BOUNDARY SURVEY

SECTION: 18
TOWNSHIP: 5N
RANGE: 62W



In accordance with a request from Keith Caplan with BONANZA CREEK ENERGY, INC. Lat40°, Inc. has determined the surface location of the ANTELOPE 11-14-18HZ to be 625' from the NORTH line and 1178' from the WEST line and the bottom hole to be 460' from the SOUTH line and 1100' from the WEST line as measured at right angles from the section lines of Section 18, Township 5 North, Range 62 West of the Sixth Principal Meridian, County of Weld, State of Colorado.

I hereby state that this Well Location Certificate was prepared by me, or under my direct supervision, that the fieldwork was completed on 5/31/12, for and on behalf of BONANZA CREEK ENERGY, INC. That this is not a Land Survey Plat or an Improvement Survey Plat, and that it is not to be relied upon for establishment of fence, building, or other future improvement lines.

NOTE:

- 1) Bearings shown are Grid Bearings of the Colorado State Plane Coordinate System, North Zone, North American Datum 1983/2007. The lineal dimensions as contained herein are based upon the "U.S. Survey Foot."
- 2) Ground elevations are based on an observed GPS elevation (NAVD 1988 DATUM).
- 3) IMPROVEMENTS: See LOCATION DRAWING for all visible improvements within 400' of disturbed area.
- 4) SURFACE USE: RANGELAND
- 5) INSTRUMENT OPERATOR: WYATT HALL

SURFACE LOCATION

LAT: 40.40493°N
LONG: 104.37117°W
PDOP: 1.6
ELEV: 4614'
1/4, 1/4: NW1/4NW1/4
NEAREST PROPERTY LINE: 625' NORTH

TARGET #1

LAT: 40.40538°N
LONG: 104.37182°W
1/4, 1/4: NW1/4NW1/4

BOTTOM HOLE

LAT: 40.39318°N
LONG: 104.37115°W
1/4, 1/4: SW1/4SW1/4

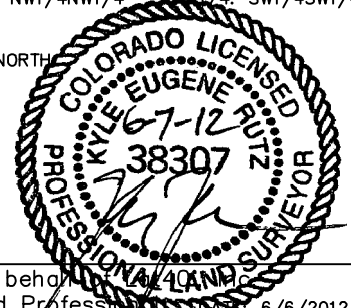
NOTE

According to Colorado law, you must commence any legal action based upon any defect in this W.L.C. within three years after you discover such defect. In no event, may any action based upon any defect in this survey be commenced more than ten years after the date of the certificate shown hereon. (13-80-105 C.R.S.)

LEGEND

- = ALIQUOT MONUMENT AS DESCRIBED
○ = CALCULATED POSITION

Kyle E. Rutz—On behalf of
Colorado Licensed Professional Land Surveyor No. 38307
DATE: 6/6/2012
PROJECT#: 2012071



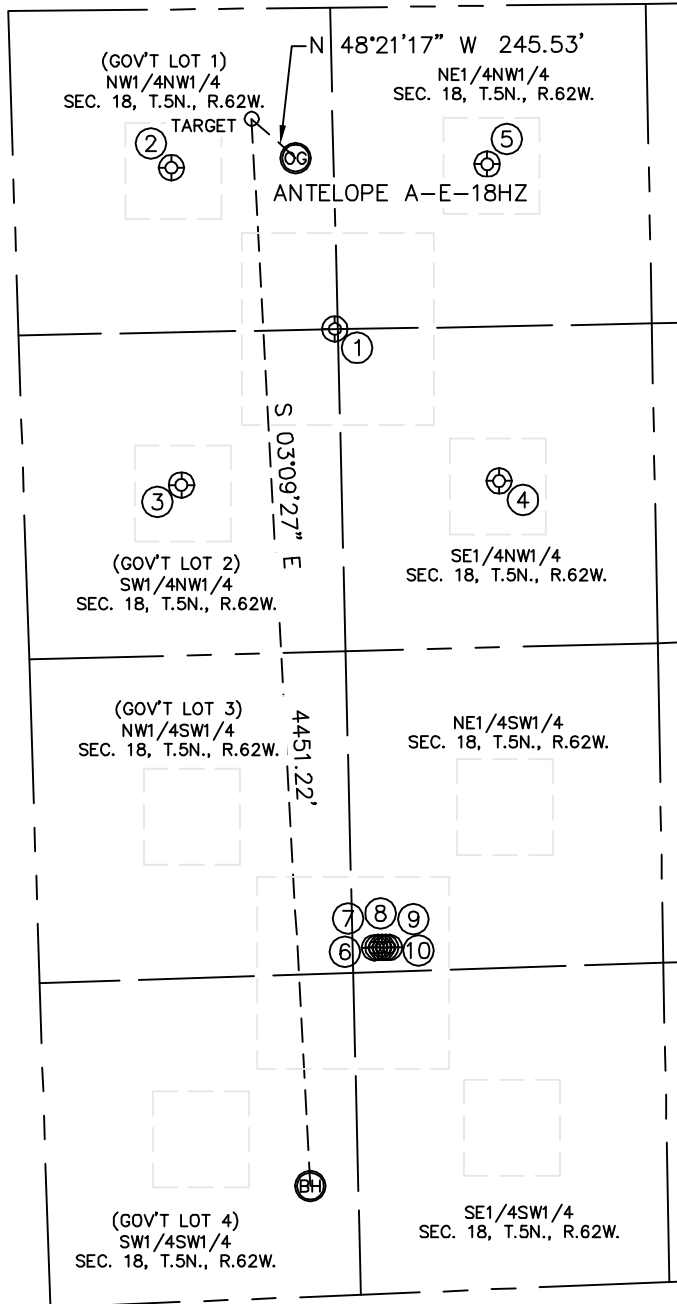


Lat40°, Inc. 1635 Foxtrail Drive, Suite 325 Loveland, CO 970-776-3321

SITE SKETCH

ANTELOPE 11-14-18HZ

SECTION: 18
TOWNSHIP: 5N
RANGE: 62W



①
ANTELOPE 18A
NW1/4NW1/4
1339' FNL
1318' FWL
LAT-40.40297°N
LONG-104.37062°W
PDOP: 2.9
ELEV: 4615'

②
ANTELOPE 11-18
NW1/4NW1/4
659' FNL
659' FWL
LAT-40.40483°N
LONG-104.37303°W
PDOP: 1.6
ELEV: 4612'

③
ANTELOPE 12-18
SW1/4NW1/4
1981' FNL
658' FWL
LAT-40.40121°N
LONG-104.37294°W
PDOP: 1.3
ELEV: 4605'

④
ANTELOPE 22-18
SE1/4NW1/4
1979' FNL
1981' FWL
LAT-40.40121°N
LONG-104.36819°W
PDOP: 1.5
ELEV: 4618'

⑤
ANTELOPE 21-18
NE1/4NW1/4
660' FNL
1975' FWL
LAT-40.40483°N
LONG-104.36831°W
PDOP: 1.4
ELEV: 4617'

⑥
ANTELOPE 14-18
NE1/4SW1/4
1442' FSL
1399' FWL
LAT-40.39589°N
LONG-104.37014°W
PDOP: 2.3
ELEV: 4601'

⑦
ANTELOPE 13-18
NE1/4SW1/4
1442' FSL
1414' FWL
LAT-40.39589°N
LONG-104.37009°W
PDOP: 1.2
ELEV: 4601'

⑧
ANTELOPE 18C
NE1/4SW1/4
1441' FSL
1429' FWL
LAT-40.39589°N
LONG-104.37003°W
PDOP: 1.8
ELEV: 4601'

⑨
ANTELOPE 24-18
NE1/4SW1/4
1441' FSL
1446' FWL
LAT-40.39589°N
LONG-104.36997°W
PDOP: 1.7
ELEV: 4601'

⑩
ANTELOPE 23-18
NE1/4SW1/4
1440' FSL
1461' FWL
LAT-40.39589°N
LONG-104.36992°W
PDOP: 1.2
ELEV: 4601'

