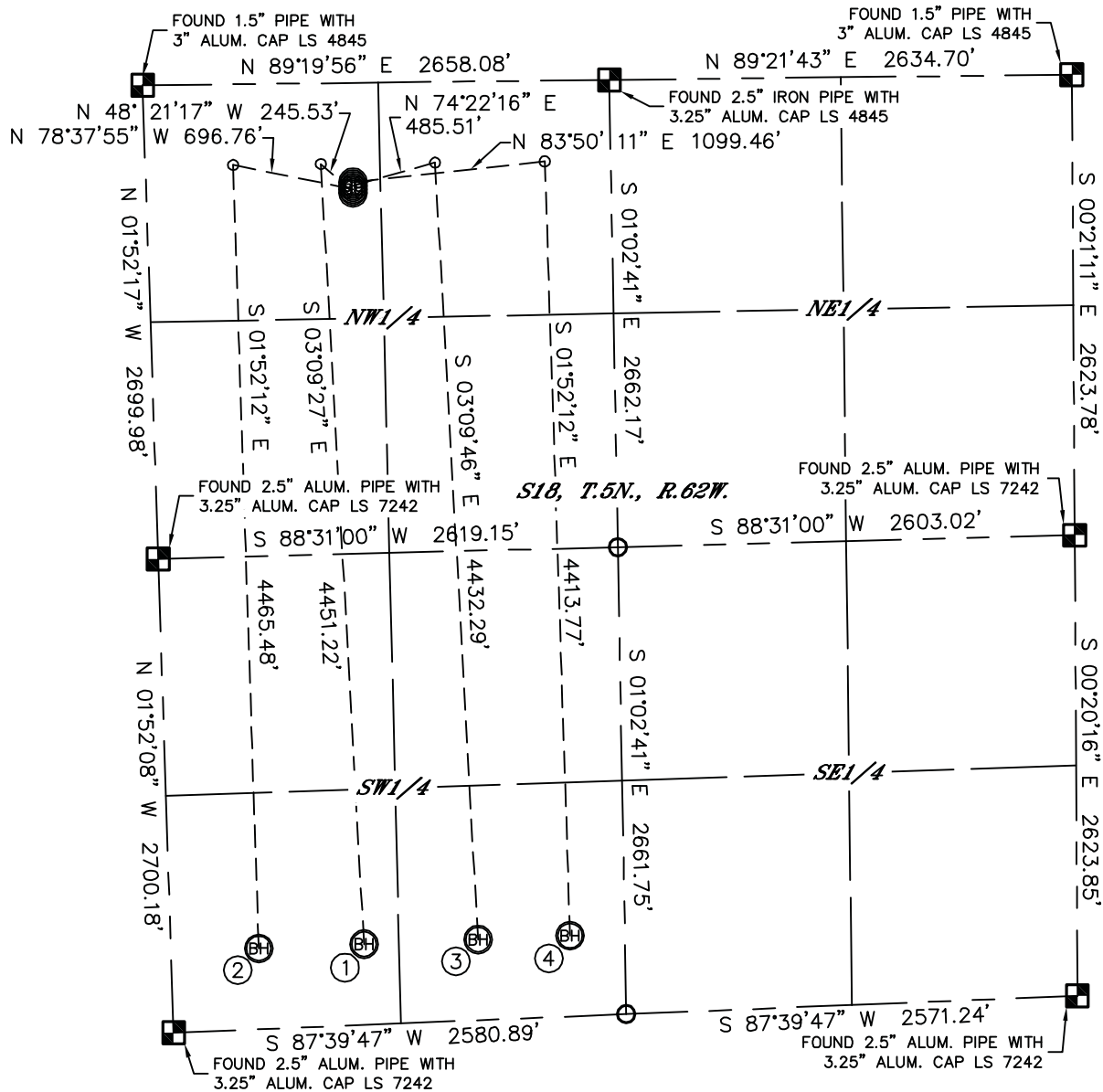


MULTI-WELL PLAN

ANTELOPE F-18 PAD

THIS MAP DOES NOT REPRESENT A BOUNDARY SURVEY



SECTION: 18
TOWNSHIP: 5N
RANGE: 62W

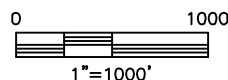


- | ① | ② | ③ | ④ |
|---|--|---|---|
| —BOTTOM HOLE—
ANTELOPE 11-14-18HZ
460' FSL
1100' FWL
LAT: 40.39318°N
LONG: 104.37115°W | —BOTTOM HOLE—
ANTELOPE A-E-18HZ
460' FSL
500' FWL
LAT: 40.39313°N
LONG: 104.37330°W | —BOTTOM HOLE—
ANTELOPE F-J-18HZ
460' FSL
1750' FWL
LAT: 40.39323°N
LONG: 104.36881°W | —BOTTOM HOLE—
ANTELOPE K-O-18HZ
460' FSL
2275' FWL
LAT: 40.39327°N
LONG: 104.36693°W |



LEGEND

-  = ALIQUOT MONUMENT AS DESCRIBED
 = CALCULATED POSITION



DATE: 6/6/2012
PROJECT#: 2012071

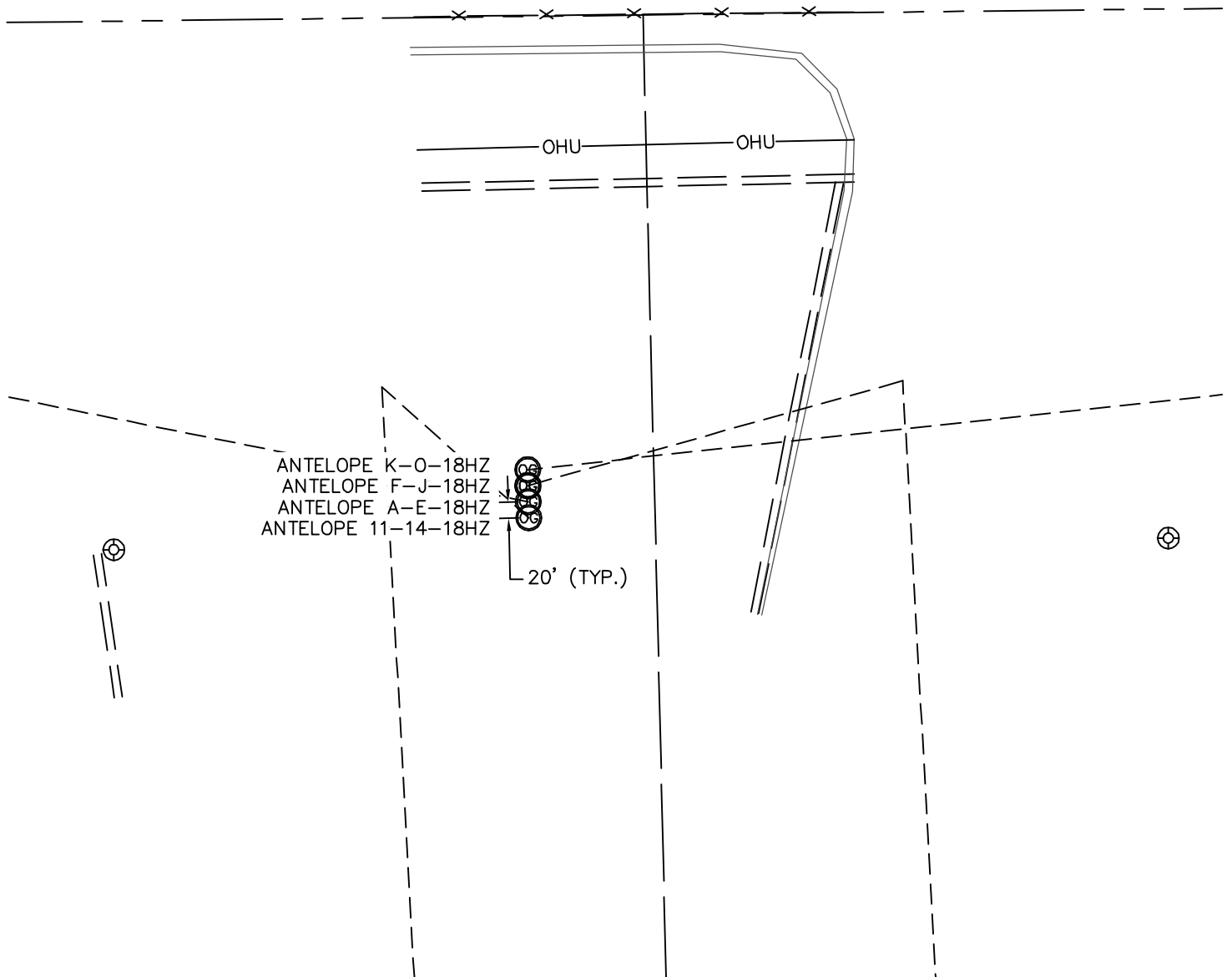


Lat40°, Inc. 1635 Foxtrail Drive, Suite 325 Loveland, CO 970-776-3321

MULTI-WELL PLAN

ANTELOPE F-18 PAD

SECTION: 18
TOWNSHIP: 5N
RANGE: 62W



0 200
1"=200'

DATE: 6/5/2012
PROJECT#: 2012071