

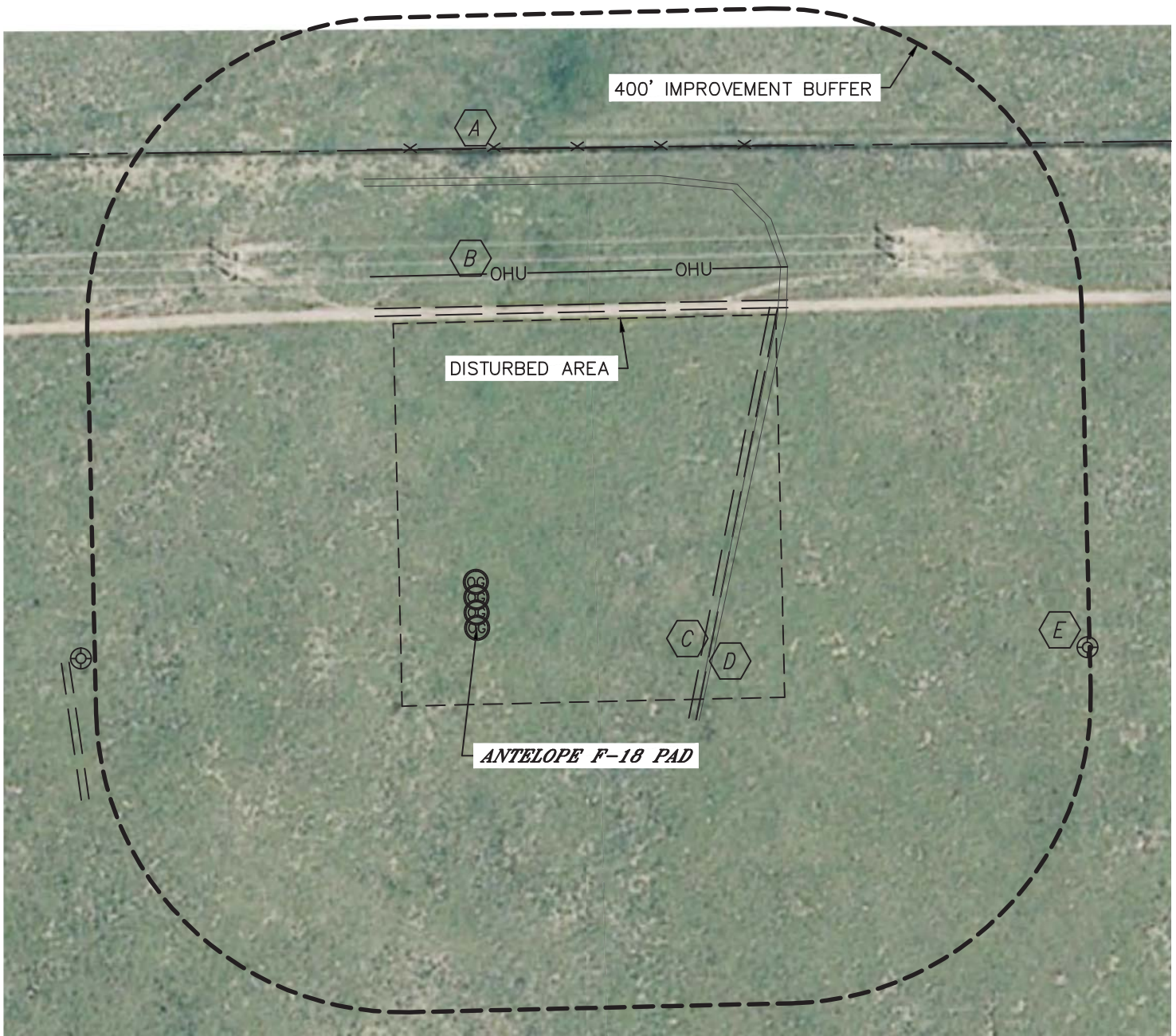


Lat40°, Inc. 1635 Foxtrail Drive, Suite 325 Loveland, CO 970-776-3321

LOCATION DRAWING






ANTELOPE F-18 PAD

SECTION: 18
TOWNSHIP: 5N
RANGE: 62W



IMPROVEMENTS:

(MEASURED FROM THE PROPOSED ANTELOPE 11-14-18HZ WELL LOCATION)

-  FENCE 626' N
-  OVERHEAD UTILITY 462' N
-  FIELD ROAD 300' SE, 415' N
-  TRENCH SCAR 304' SE
-  EX. GAS WELL 798' E

NEAREST: BUILDING 2683' S, PUBLIC ROAD 5280'+,
ABOVE GROUND UTILITY 462' N, RAILROAD 5280'+, PROPERTY LINE 625' N

