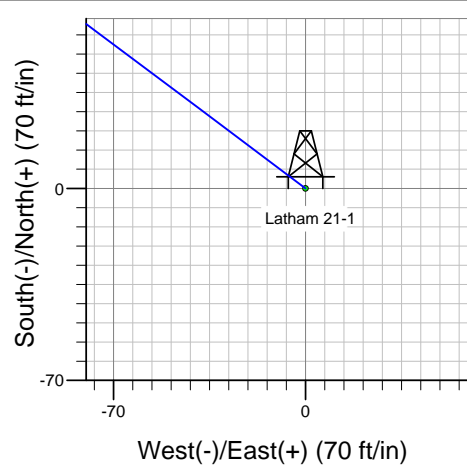
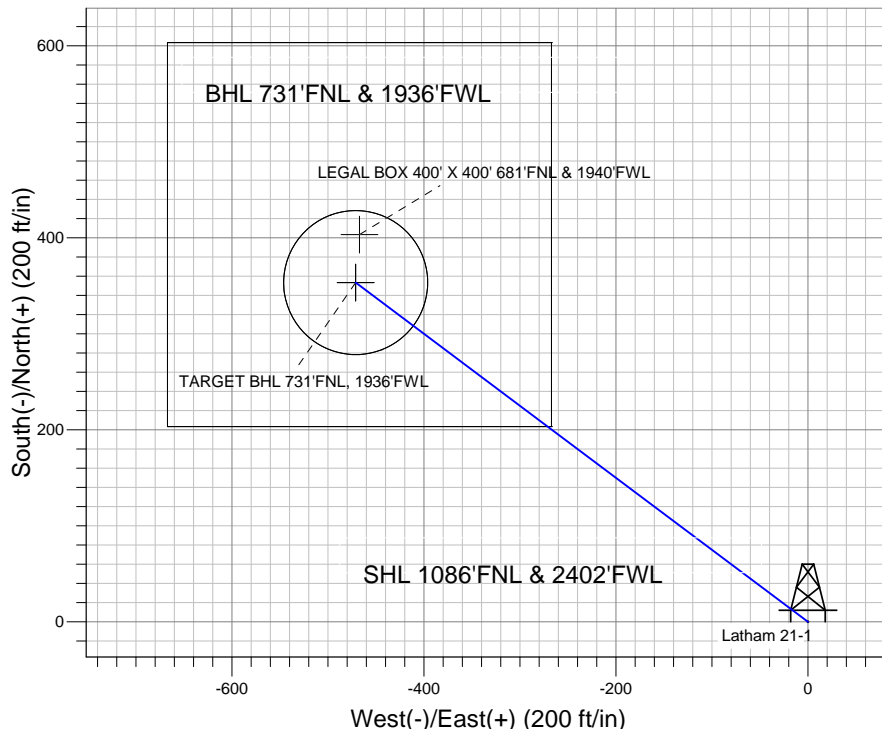
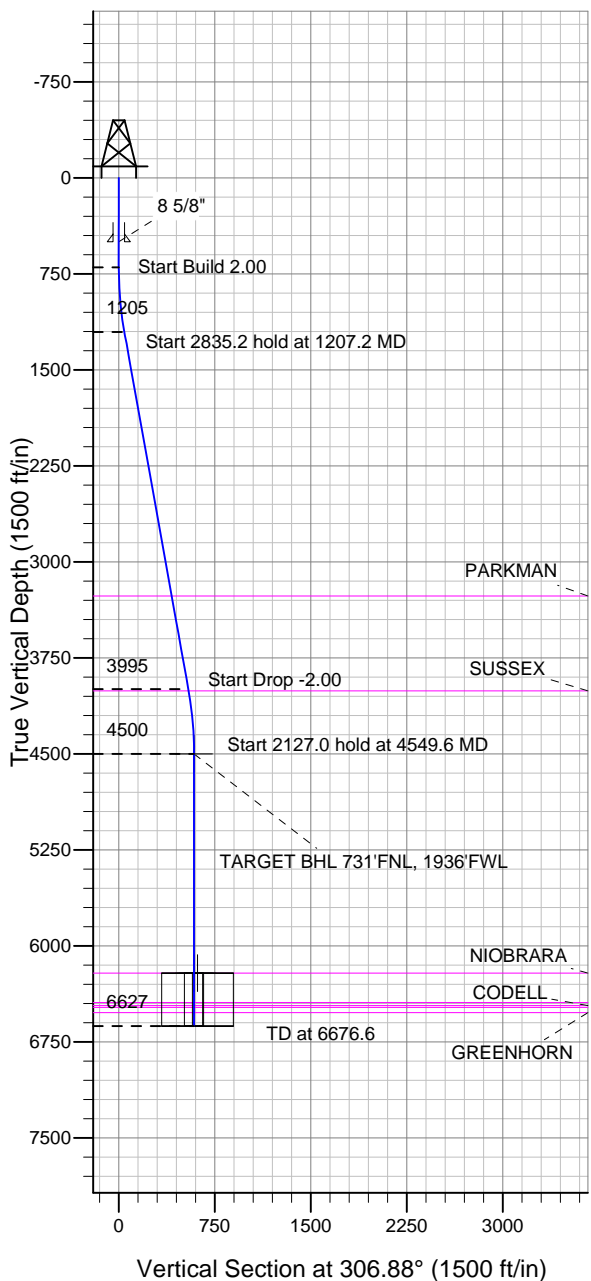


Well Name: Latham 21-1

Surface Location: Latham 21-1 Pad Sec.1-T4N-R63W
 North American Datum 1983 US State Plane 1983 Colorado Northern Zone
 Ground Elevation: 4543.0
 +N/-S +E/-W Northing Easting Latitude Longitude Slot
 0.0 0.0 1370841.52 3310131.51 40.346020 -104.387320
 Original Well Elev WELL @ 4558.0ft (Original Well Elev)

BONANZA CREEK ENERGY OPERATING



Latham 21-1 Pad Sec.1-T4N-R63W
 Latham 21-1
 Plan #1 (5-30-12)
 14:58, May 31 2012



Azimuths to True North
 Magnetic North: 8.53°

Magnetic Field
 Strength: 53044.4snT
 Dip Angle: 67.04°
 Date: 5/30/2012
 Model: IGRF2010

WELLBORE TARGET DETAILS (LAT/LONG)

Name	TVD	+N/-S	+E/-W	Latitude	Longitude	Shape
TARGET BHL 731'FNL, 1936'FWL	4500.0	353.4	-471.1	40.346990	-104.389010	Point
LEGAL BOX 400' X 400' 681'FNL & 1940'FWL	6213.0	403.4	-467.1	40.347127	-104.388996	Rectangle (Sides: L400.0 W400.0)
TARGET CIRCLE 731'FNL & 1936'FWL	6213.0	353.4	-471.1	40.346990	-104.389010	Circle (Radius: 75.0)

SECTION DETAILS

Sec	MD	Inc	Azi	TVD	+N/-S	+E/-W	DLeg	TFace	VSec	Target
1	0.0	0.00	0.00	0.0	0.0	0.0	0.00	0.00	0.0	
2	700.0	0.00	0.00	700.0	0.0	0.0	0.00	0.00	0.0	
3	1207.2	10.14	306.88	1204.5	26.9	-35.8	2.00	306.88	44.8	
4	4042.4	10.14	306.88	3995.5	326.5	-435.3	0.00	0.00	544.1	
5	4549.6	0.00	0.00	4500.0	353.4	-471.1	2.00	180.00	588.9	TARGET BHL 731'FNL, 1936'FWL
6	6676.6	0.00	0.00	6627.0	353.4	-471.1	0.00	0.00	588.9	



Directional

BONANZA CREEK ENERGY OPERATING

SEC.1-T4N-R63W

Latham 21-1 Pad Sec.1-T4N-R63W

Latham 21-1

Wellbore #1

Plan: Plan #1 (5-30-12)

Standard Planning Report

31 May, 2012

Plan Sections										
Measured Depth (ft)	Inclination (°)	Azimuth (°)	Vertical Depth (ft)	+N/-S (ft)	+E/-W (ft)	Dogleg Rate (°/100ft)	Build Rate (°/100ft)	Turn Rate (°/100ft)	TFO (°)	Target
0.0	0.00	0.00	0.0	0.0	0.0	0.00	0.00	0.00	0.00	
700.0	0.00	0.00	700.0	0.0	0.0	0.00	0.00	0.00	0.00	
1,207.2	10.14	306.88	1,204.5	26.9	-35.8	2.00	2.00	0.00	306.88	
4,042.4	10.14	306.88	3,995.5	326.5	-435.3	0.00	0.00	0.00	0.00	
4,549.6	0.00	0.00	4,500.0	353.4	-471.1	2.00	-2.00	0.00	180.00	TARGET BHL 731'1"
6,676.6	0.00	0.00	6,627.0	353.4	-471.1	0.00	0.00	0.00	0.00	

Database:	Landmark	Local Co-ordinate Reference:	Well Latham 21-1
Company:	BONANZA CREEK ENERGY OPERATING	TVD Reference:	WELL @ 4558.0ft (Original Well Elev)
Project:	SEC.1-T4N-R63W	MD Reference:	WELL @ 4558.0ft (Original Well Elev)
Site:	Latham 21-1 Pad Sec.1-T4N-R63W	North Reference:	True
Well:	Latham 21-1	Survey Calculation Method:	Minimum Curvature
Wellbore:	Wellbore #1		
Design:	Plan #1 (5-30-12)		

Planned Survey									
Measured Depth (ft)	Inclination (°)	Azimuth (°)	Vertical Depth (ft)	+N/-S (ft)	+E/-W (ft)	Vertical Section (ft)	Dogleg Rate (°/100ft)	Build Rate (°/100ft)	Turn Rate (°/100ft)
0.0	0.00	0.00	0.0	0.0	0.0	0.0	0.00	0.00	0.00
40.0	0.00	0.00	40.0	0.0	0.0	0.0	0.00	0.00	0.00
80.0	0.00	0.00	80.0	0.0	0.0	0.0	0.00	0.00	0.00
120.0	0.00	0.00	120.0	0.0	0.0	0.0	0.00	0.00	0.00
160.0	0.00	0.00	160.0	0.0	0.0	0.0	0.00	0.00	0.00
200.0	0.00	0.00	200.0	0.0	0.0	0.0	0.00	0.00	0.00
240.0	0.00	0.00	240.0	0.0	0.0	0.0	0.00	0.00	0.00
280.0	0.00	0.00	280.0	0.0	0.0	0.0	0.00	0.00	0.00
320.0	0.00	0.00	320.0	0.0	0.0	0.0	0.00	0.00	0.00
360.0	0.00	0.00	360.0	0.0	0.0	0.0	0.00	0.00	0.00
400.0	0.00	0.00	400.0	0.0	0.0	0.0	0.00	0.00	0.00
440.0	0.00	0.00	440.0	0.0	0.0	0.0	0.00	0.00	0.00
480.0	0.00	0.00	480.0	0.0	0.0	0.0	0.00	0.00	0.00
500.0	0.00	0.00	500.0	0.0	0.0	0.0	0.00	0.00	0.00
8 5/8"									
520.0	0.00	0.00	520.0	0.0	0.0	0.0	0.00	0.00	0.00
560.0	0.00	0.00	560.0	0.0	0.0	0.0	0.00	0.00	0.00
600.0	0.00	0.00	600.0	0.0	0.0	0.0	0.00	0.00	0.00
640.0	0.00	0.00	640.0	0.0	0.0	0.0	0.00	0.00	0.00
680.0	0.00	0.00	680.0	0.0	0.0	0.0	0.00	0.00	0.00
700.0	0.00	0.00	700.0	0.0	0.0	0.0	0.00	0.00	0.00
720.0	0.40	306.88	720.0	0.0	-0.1	0.1	2.00	2.00	0.00
760.0	1.20	306.88	760.0	0.4	-0.5	0.6	2.00	2.00	0.00
800.0	2.00	306.88	800.0	1.0	-1.4	1.7	2.00	2.00	0.00
840.0	2.80	306.88	839.9	2.1	-2.7	3.4	2.00	2.00	0.00
880.0	3.60	306.88	879.9	3.4	-4.5	5.7	2.00	2.00	0.00
920.0	4.40	306.88	919.8	5.1	-6.8	8.4	2.00	2.00	0.00
960.0	5.20	306.88	959.6	7.1	-9.4	11.8	2.00	2.00	0.00
1,000.0	6.00	306.88	999.5	9.4	-12.6	15.7	2.00	2.00	0.00
1,040.0	6.80	306.88	1,039.2	12.1	-16.1	20.2	2.00	2.00	0.00
1,080.0	7.60	306.88	1,078.9	15.1	-20.1	25.2	2.00	2.00	0.00
1,120.0	8.40	306.88	1,118.5	18.4	-24.6	30.7	2.00	2.00	0.00
1,160.0	9.20	306.88	1,158.0	22.1	-29.5	36.9	2.00	2.00	0.00
1,200.0	10.00	306.88	1,197.5	26.1	-34.8	43.5	2.00	2.00	0.00
1,207.2	10.14	306.88	1,204.5	26.9	-35.8	44.8	2.00	2.00	0.00
1,240.0	10.14	306.88	1,236.8	30.3	-40.4	50.6	0.00	0.00	0.00
1,280.0	10.14	306.88	1,276.2	34.6	-46.1	57.6	0.00	0.00	0.00
1,320.0	10.14	306.88	1,315.6	38.8	-51.7	64.6	0.00	0.00	0.00
1,360.0	10.14	306.88	1,355.0	43.0	-57.3	71.7	0.00	0.00	0.00
1,400.0	10.14	306.88	1,394.3	47.2	-63.0	78.7	0.00	0.00	0.00
1,440.0	10.14	306.88	1,433.7	51.5	-68.6	85.8	0.00	0.00	0.00
1,480.0	10.14	306.88	1,473.1	55.7	-74.3	92.8	0.00	0.00	0.00
1,520.0	10.14	306.88	1,512.5	59.9	-79.9	99.9	0.00	0.00	0.00
1,560.0	10.14	306.88	1,551.8	64.2	-85.5	106.9	0.00	0.00	0.00
1,600.0	10.14	306.88	1,591.2	68.4	-91.2	114.0	0.00	0.00	0.00
1,640.0	10.14	306.88	1,630.6	72.6	-96.8	121.0	0.00	0.00	0.00
1,680.0	10.14	306.88	1,670.0	76.8	-102.4	128.0	0.00	0.00	0.00
1,720.0	10.14	306.88	1,709.3	81.1	-108.1	135.1	0.00	0.00	0.00
1,760.0	10.14	306.88	1,748.7	85.3	-113.7	142.1	0.00	0.00	0.00
1,800.0	10.14	306.88	1,788.1	89.5	-119.3	149.2	0.00	0.00	0.00
1,840.0	10.14	306.88	1,827.5	93.8	-125.0	156.2	0.00	0.00	0.00
1,880.0	10.14	306.88	1,866.8	98.0	-130.6	163.3	0.00	0.00	0.00
1,920.0	10.14	306.88	1,906.2	102.2	-136.2	170.3	0.00	0.00	0.00
1,960.0	10.14	306.88	1,945.6	106.4	-141.9	177.4	0.00	0.00	0.00

Database:	Landmark	Local Co-ordinate Reference:	Well Latham 21-1
Company:	BONANZA CREEK ENERGY OPERATING	TVD Reference:	WELL @ 4558.0ft (Original Well Elev)
Project:	SEC.1-T4N-R63W	MD Reference:	WELL @ 4558.0ft (Original Well Elev)
Site:	Latham 21-1 Pad Sec.1-T4N-R63W	North Reference:	True
Well:	Latham 21-1	Survey Calculation Method:	Minimum Curvature
Wellbore:	Wellbore #1		
Design:	Plan #1 (5-30-12)		

Planned Survey									
Measured Depth (ft)	Inclination (°)	Azimuth (°)	Vertical Depth (ft)	+N/-S (ft)	+E/-W (ft)	Vertical Section (ft)	Dogleg Rate (°/100ft)	Build Rate (°/100ft)	Turn Rate (°/100ft)
2,000.0	10.14	306.88	1,985.0	110.7	-147.5	184.4	0.00	0.00	0.00
2,040.0	10.14	306.88	2,024.3	114.9	-153.1	191.5	0.00	0.00	0.00
2,080.0	10.14	306.88	2,063.7	119.1	-158.8	198.5	0.00	0.00	0.00
2,120.0	10.14	306.88	2,103.1	123.3	-164.4	205.5	0.00	0.00	0.00
2,160.0	10.14	306.88	2,142.5	127.6	-170.1	212.6	0.00	0.00	0.00
2,200.0	10.14	306.88	2,181.8	131.8	-175.7	219.6	0.00	0.00	0.00
2,240.0	10.14	306.88	2,221.2	136.0	-181.3	226.7	0.00	0.00	0.00
2,280.0	10.14	306.88	2,260.6	140.3	-187.0	233.7	0.00	0.00	0.00
2,320.0	10.14	306.88	2,300.0	144.5	-192.6	240.8	0.00	0.00	0.00
2,360.0	10.14	306.88	2,339.3	148.7	-198.2	247.8	0.00	0.00	0.00
2,400.0	10.14	306.88	2,378.7	152.9	-203.9	254.9	0.00	0.00	0.00
2,440.0	10.14	306.88	2,418.1	157.2	-209.5	261.9	0.00	0.00	0.00
2,480.0	10.14	306.88	2,457.5	161.4	-215.1	268.9	0.00	0.00	0.00
2,520.0	10.14	306.88	2,496.8	165.6	-220.8	276.0	0.00	0.00	0.00
2,560.0	10.14	306.88	2,536.2	169.8	-226.4	283.0	0.00	0.00	0.00
2,600.0	10.14	306.88	2,575.6	174.1	-232.0	290.1	0.00	0.00	0.00
2,640.0	10.14	306.88	2,615.0	178.3	-237.7	297.1	0.00	0.00	0.00
2,680.0	10.14	306.88	2,654.3	182.5	-243.3	304.2	0.00	0.00	0.00
2,720.0	10.14	306.88	2,693.7	186.8	-248.9	311.2	0.00	0.00	0.00
2,760.0	10.14	306.88	2,733.1	191.0	-254.6	318.3	0.00	0.00	0.00
2,800.0	10.14	306.88	2,772.5	195.2	-260.2	325.3	0.00	0.00	0.00
2,840.0	10.14	306.88	2,811.8	199.4	-265.9	332.3	0.00	0.00	0.00
2,880.0	10.14	306.88	2,851.2	203.7	-271.5	339.4	0.00	0.00	0.00
2,920.0	10.14	306.88	2,890.6	207.9	-277.1	346.4	0.00	0.00	0.00
2,960.0	10.14	306.88	2,930.0	212.1	-282.8	353.5	0.00	0.00	0.00
3,000.0	10.14	306.88	2,969.3	216.3	-288.4	360.5	0.00	0.00	0.00
3,040.0	10.14	306.88	3,008.7	220.6	-294.0	367.6	0.00	0.00	0.00
3,080.0	10.14	306.88	3,048.1	224.8	-299.7	374.6	0.00	0.00	0.00
3,120.0	10.14	306.88	3,087.5	229.0	-305.3	381.7	0.00	0.00	0.00
3,160.0	10.14	306.88	3,126.8	233.3	-310.9	388.7	0.00	0.00	0.00
3,200.0	10.14	306.88	3,166.2	237.5	-316.6	395.7	0.00	0.00	0.00
3,240.0	10.14	306.88	3,205.6	241.7	-322.2	402.8	0.00	0.00	0.00
3,280.0	10.14	306.88	3,245.0	245.9	-327.8	409.8	0.00	0.00	0.00
3,303.4	10.14	306.88	3,268.0	248.4	-331.1	414.0	0.00	0.00	0.00
PARKMAN									
3,320.0	10.14	306.88	3,284.3	250.2	-333.5	416.9	0.00	0.00	0.00
3,360.0	10.14	306.88	3,323.7	254.4	-339.1	423.9	0.00	0.00	0.00
3,400.0	10.14	306.88	3,363.1	258.6	-344.7	431.0	0.00	0.00	0.00
3,440.0	10.14	306.88	3,402.5	262.8	-350.4	438.0	0.00	0.00	0.00
3,480.0	10.14	306.88	3,441.8	267.1	-356.0	445.1	0.00	0.00	0.00
3,520.0	10.14	306.88	3,481.2	271.3	-361.7	452.1	0.00	0.00	0.00
3,560.0	10.14	306.88	3,520.6	275.5	-367.3	459.1	0.00	0.00	0.00
3,600.0	10.14	306.88	3,560.0	279.8	-372.9	466.2	0.00	0.00	0.00
3,640.0	10.14	306.88	3,599.3	284.0	-378.6	473.2	0.00	0.00	0.00
3,680.0	10.14	306.88	3,638.7	288.2	-384.2	480.3	0.00	0.00	0.00
3,720.0	10.14	306.88	3,678.1	292.4	-389.8	487.3	0.00	0.00	0.00
3,760.0	10.14	306.88	3,717.5	296.7	-395.5	494.4	0.00	0.00	0.00
3,800.0	10.14	306.88	3,756.8	300.9	-401.1	501.4	0.00	0.00	0.00
3,840.0	10.14	306.88	3,796.2	305.1	-406.7	508.5	0.00	0.00	0.00
3,880.0	10.14	306.88	3,835.6	309.4	-412.4	515.5	0.00	0.00	0.00
3,920.0	10.14	306.88	3,875.0	313.6	-418.0	522.6	0.00	0.00	0.00
3,960.0	10.14	306.88	3,914.3	317.8	-423.6	529.6	0.00	0.00	0.00
4,000.0	10.14	306.88	3,953.7	322.0	-429.3	536.6	0.00	0.00	0.00

Database:	Landmark	Local Co-ordinate Reference:	Well Latham 21-1
Company:	BONANZA CREEK ENERGY OPERATING	TVD Reference:	WELL @ 4558.0ft (Original Well Elev)
Project:	SEC.1-T4N-R63W	MD Reference:	WELL @ 4558.0ft (Original Well Elev)
Site:	Latham 21-1 Pad Sec.1-T4N-R63W	North Reference:	True
Well:	Latham 21-1	Survey Calculation Method:	Minimum Curvature
Wellbore:	Wellbore #1		
Design:	Plan #1 (5-30-12)		

Planned Survey									
Measured Depth (ft)	Inclination (°)	Azimuth (°)	Vertical Depth (ft)	+N/-S (ft)	+E/-W (ft)	Vertical Section (ft)	Dogleg Rate (°/100ft)	Build Rate (°/100ft)	Turn Rate (°/100ft)
4,040.0	10.14	306.88	3,993.1	326.3	-434.9	543.7	0.00	0.00	0.00
4,042.4	10.14	306.88	3,995.5	326.5	-435.3	544.1	0.00	0.00	0.00
4,055.2	9.89	306.88	4,008.0	327.8	-437.0	546.3	2.00	-2.00	0.00
SUSSEX									
4,080.0	9.39	306.88	4,032.5	330.3	-440.4	550.5	2.00	-2.00	0.00
4,120.0	8.59	306.88	4,072.0	334.1	-445.4	556.7	2.00	-2.00	0.00
4,160.0	7.79	306.88	4,111.6	337.5	-449.9	562.4	2.00	-2.00	0.00
4,200.0	6.99	306.88	4,151.3	340.6	-454.0	567.6	2.00	-2.00	0.00
4,240.0	6.19	306.88	4,191.0	343.4	-457.7	572.2	2.00	-2.00	0.00
4,280.0	5.39	306.88	4,230.8	345.8	-460.9	576.2	2.00	-2.00	0.00
4,320.0	4.59	306.88	4,270.6	347.9	-463.7	579.7	2.00	-2.00	0.00
4,360.0	3.79	306.88	4,310.5	349.6	-466.1	582.6	2.00	-2.00	0.00
4,400.0	2.99	306.88	4,350.5	351.0	-467.9	585.0	2.00	-2.00	0.00
4,440.0	2.19	306.88	4,390.4	352.1	-469.4	586.8	2.00	-2.00	0.00
4,480.0	1.39	306.88	4,430.4	352.9	-470.4	588.0	2.00	-2.00	0.00
4,520.0	0.59	306.88	4,470.4	353.3	-470.9	588.7	2.00	-2.00	0.00
4,549.6	0.00	0.00	4,500.0	353.4	-471.1	588.9	2.00	-2.00	0.00
TARGET BHL 731'FNL, 1936'FWL									
4,560.0	0.00	0.00	4,510.4	353.4	-471.1	588.9	0.00	0.00	0.00
4,600.0	0.00	0.00	4,550.4	353.4	-471.1	588.9	0.00	0.00	0.00
4,640.0	0.00	0.00	4,590.4	353.4	-471.1	588.9	0.00	0.00	0.00
4,680.0	0.00	0.00	4,630.4	353.4	-471.1	588.9	0.00	0.00	0.00
4,720.0	0.00	0.00	4,670.4	353.4	-471.1	588.9	0.00	0.00	0.00
4,760.0	0.00	0.00	4,710.4	353.4	-471.1	588.9	0.00	0.00	0.00
4,800.0	0.00	0.00	4,750.4	353.4	-471.1	588.9	0.00	0.00	0.00
4,840.0	0.00	0.00	4,790.4	353.4	-471.1	588.9	0.00	0.00	0.00
4,880.0	0.00	0.00	4,830.4	353.4	-471.1	588.9	0.00	0.00	0.00
4,920.0	0.00	0.00	4,870.4	353.4	-471.1	588.9	0.00	0.00	0.00
4,960.0	0.00	0.00	4,910.4	353.4	-471.1	588.9	0.00	0.00	0.00
5,000.0	0.00	0.00	4,950.4	353.4	-471.1	588.9	0.00	0.00	0.00
5,040.0	0.00	0.00	4,990.4	353.4	-471.1	588.9	0.00	0.00	0.00
5,080.0	0.00	0.00	5,030.4	353.4	-471.1	588.9	0.00	0.00	0.00
5,120.0	0.00	0.00	5,070.4	353.4	-471.1	588.9	0.00	0.00	0.00
5,160.0	0.00	0.00	5,110.4	353.4	-471.1	588.9	0.00	0.00	0.00
5,200.0	0.00	0.00	5,150.4	353.4	-471.1	588.9	0.00	0.00	0.00
5,240.0	0.00	0.00	5,190.4	353.4	-471.1	588.9	0.00	0.00	0.00
5,280.0	0.00	0.00	5,230.4	353.4	-471.1	588.9	0.00	0.00	0.00
5,320.0	0.00	0.00	5,270.4	353.4	-471.1	588.9	0.00	0.00	0.00
5,360.0	0.00	0.00	5,310.4	353.4	-471.1	588.9	0.00	0.00	0.00
5,400.0	0.00	0.00	5,350.4	353.4	-471.1	588.9	0.00	0.00	0.00
5,440.0	0.00	0.00	5,390.4	353.4	-471.1	588.9	0.00	0.00	0.00
5,480.0	0.00	0.00	5,430.4	353.4	-471.1	588.9	0.00	0.00	0.00
5,520.0	0.00	0.00	5,470.4	353.4	-471.1	588.9	0.00	0.00	0.00
5,560.0	0.00	0.00	5,510.4	353.4	-471.1	588.9	0.00	0.00	0.00
5,600.0	0.00	0.00	5,550.4	353.4	-471.1	588.9	0.00	0.00	0.00
5,640.0	0.00	0.00	5,590.4	353.4	-471.1	588.9	0.00	0.00	0.00
5,680.0	0.00	0.00	5,630.4	353.4	-471.1	588.9	0.00	0.00	0.00
5,720.0	0.00	0.00	5,670.4	353.4	-471.1	588.9	0.00	0.00	0.00
5,760.0	0.00	0.00	5,710.4	353.4	-471.1	588.9	0.00	0.00	0.00
5,800.0	0.00	0.00	5,750.4	353.4	-471.1	588.9	0.00	0.00	0.00
5,840.0	0.00	0.00	5,790.4	353.4	-471.1	588.9	0.00	0.00	0.00
5,880.0	0.00	0.00	5,830.4	353.4	-471.1	588.9	0.00	0.00	0.00
5,920.0	0.00	0.00	5,870.4	353.4	-471.1	588.9	0.00	0.00	0.00
5,960.0	0.00	0.00	5,910.4	353.4	-471.1	588.9	0.00	0.00	0.00

Database:	Landmark	Local Co-ordinate Reference:	Well Latham 21-1
Company:	BONANZA CREEK ENERGY OPERATING	TVD Reference:	WELL @ 4558.0ft (Original Well Elev)
Project:	SEC.1-T4N-R63W	MD Reference:	WELL @ 4558.0ft (Original Well Elev)
Site:	Latham 21-1 Pad Sec.1-T4N-R63W	North Reference:	True
Well:	Latham 21-1	Survey Calculation Method:	Minimum Curvature
Wellbore:	Wellbore #1		
Design:	Plan #1 (5-30-12)		

Planned Survey

Measured Depth (ft)	Inclination (°)	Azimuth (°)	Vertical Depth (ft)	+N/-S (ft)	+E/-W (ft)	Vertical Section (ft)	Dogleg Rate (°/100ft)	Build Rate (°/100ft)	Turn Rate (°/100ft)
6,000.0	0.00	0.00	5,950.4	353.4	-471.1	588.9	0.00	0.00	0.00
6,040.0	0.00	0.00	5,990.4	353.4	-471.1	588.9	0.00	0.00	0.00
6,080.0	0.00	0.00	6,030.4	353.4	-471.1	588.9	0.00	0.00	0.00
6,120.0	0.00	0.00	6,070.4	353.4	-471.1	588.9	0.00	0.00	0.00
6,160.0	0.00	0.00	6,110.4	353.4	-471.1	588.9	0.00	0.00	0.00
6,200.0	0.00	0.00	6,150.4	353.4	-471.1	588.9	0.00	0.00	0.00
6,240.0	0.00	0.00	6,190.4	353.4	-471.1	588.9	0.00	0.00	0.00
6,262.6	0.00	0.00	6,213.0	353.4	-471.1	588.9	0.00	0.00	0.00
NIOBRARA - TARGET CIRCLE 731'FNL & 1936'FWL - LEGAL BOX 400' X 400' 681'FNL & 1940'FWL									
6,280.0	0.00	0.00	6,230.4	353.4	-471.1	588.9	0.00	0.00	0.00
6,320.0	0.00	0.00	6,270.4	353.4	-471.1	588.9	0.00	0.00	0.00
6,360.0	0.00	0.00	6,310.4	353.4	-471.1	588.9	0.00	0.00	0.00
6,400.0	0.00	0.00	6,350.4	353.4	-471.1	588.9	0.00	0.00	0.00
6,440.0	0.00	0.00	6,390.4	353.4	-471.1	588.9	0.00	0.00	0.00
6,480.0	0.00	0.00	6,430.4	353.4	-471.1	588.9	0.00	0.00	0.00
6,492.6	0.00	0.00	6,443.0	353.4	-471.1	588.9	0.00	0.00	0.00
FT. HAYES									
6,516.6	0.00	0.00	6,467.0	353.4	-471.1	588.9	0.00	0.00	0.00
CODELL									
6,520.0	0.00	0.00	6,470.4	353.4	-471.1	588.9	0.00	0.00	0.00
6,529.6	0.00	0.00	6,480.0	353.4	-471.1	588.9	0.00	0.00	0.00
CARLILE									
6,560.0	0.00	0.00	6,510.4	353.4	-471.1	588.9	0.00	0.00	0.00
6,571.6	0.00	0.00	6,522.0	353.4	-471.1	588.9	0.00	0.00	0.00
GREENHORN									
6,600.0	0.00	0.00	6,550.4	353.4	-471.1	588.9	0.00	0.00	0.00
6,640.0	0.00	0.00	6,590.4	353.4	-471.1	588.9	0.00	0.00	0.00
6,676.6	0.00	0.00	6,627.0	353.4	-471.1	588.9	0.00	0.00	0.00

Casing Points

Measured Depth (ft)	Vertical Depth (ft)	Name	Casing Diameter (")	Hole Diameter (")
500.0	500.0	8 5/8"	8-5/8	12-1/4

Formations

Measured Depth (ft)	Vertical Depth (ft)	Name	Lithology	Dip (°)	Dip Direction (°)
3,303.4	3,268.0	PARKMAN		0.00	
4,055.2	4,008.0	SUSSEX		0.00	
6,262.6	6,213.0	NIOBRARA		0.00	
6,492.6	6,443.0	FT. HAYES		0.00	
6,516.6	6,467.0	CODELL		0.00	
6,529.6	6,480.0	CARLILE		0.00	
6,571.6	6,522.0	GREENHORN		0.00	