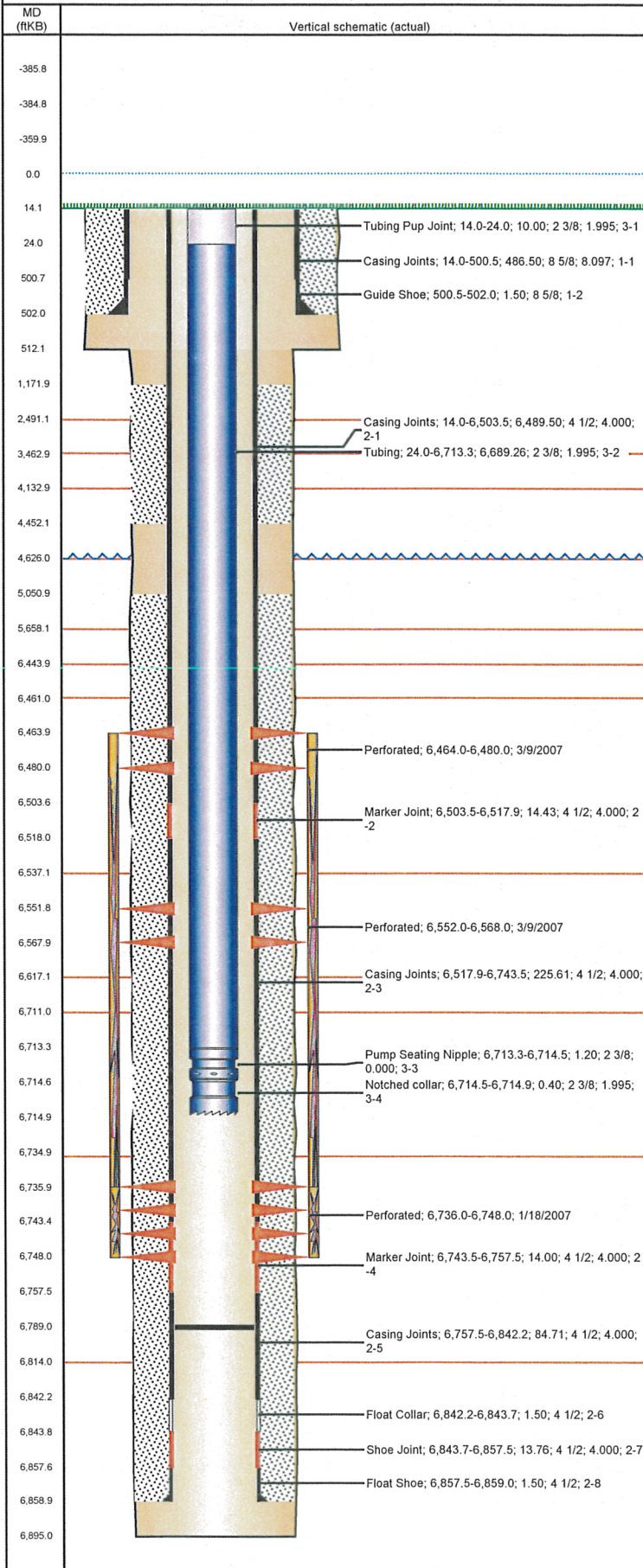


Well Name: LOLOFF B35-21

VERTICAL - ORIGINAL HOLE, 6/21/2012 3:08:16 PM



Well Header

API	Business Unit	District	Well Config
05-123-24446	WATTENBERG	15	VERTICAL
Original KB Elevation (ft)	KB - GL / MSL (ftKB)	Spud Date	P & A Date
4,634.00	14.00	1/1/2007	
Comment			

Directions To Well

CR 50 & CR 59 NORTH 6/10 TO TANK BATTERY WEST THROUGH GREEN GATE CONTINUE WEST ALONG DITCH SOUTH 1/10 INTO

Current PBTB (ftKB)

ORIGINAL HOLE - 6,789.0

Surface Location (Congressional)

Quarter 1	Quarter 2	Quarter 3	Quarter 4	Section	Township	Twnshp N...	Range	Rng E/W Dir
		SE	NW	35	5	N	64	W

Bottom Hole Location

North-South Distance (ft)	From N or S Line	East-West Distance (ft)	From E or W Line
---------------------------	------------------	-------------------------	------------------

Plug Back Total Depths

Date	Depth (ftKB)	Method	Com
1/5/2007	6,843.0	CASING TALLY	CASING TALLY
1/16/2007	6,828.0	CASED HOLE LOG	DEPTH LOGGER ON CBL

Wellbore Sections

Section Des	Size (in)	Act Top (ftKB)	Act Btm (ftKB)
SURFACE	12 1/4	14.0	512.0
PRODUCTION	7 7/8	512.0	6,895.0

Zone Statuses

Zone Name	Status Date	Status	Job
CODELL	4/7/2007	PR	DRILLING/COMPLETION - ORIGINAL, 1/1/2007 00:00
CODELL	1/11/2012	PR	RE-FRAC, 11/23/2011 06:00
NIOBRARA	4/7/2007	PR	DRILLING/COMPLETION - ORIGINAL, 1/1/2007 00:00

Casing Strings

Csg Des	Run Date	OD (in)	Wt/Len (lb/ft)	Grade	Top (ftKB)	Set Depth (ftKB)
Surface	1/1/2007	8 5/8	24.00	J-55	14.0	502.0
Production	1/5/2007	4 1/2	11.60	M-80	14.0	6,859.0

Cement

Des	Top (ftKB)	Btm (ftKB)
SURFACE CASING CEMENT	14.0	502.0
PRODUCTION CASING CEMENT	1,172.0	4,452.0
PRODUCTION CASING CEMENT	5,051.0	6,859.0

Tubing Components

Item Des	OD (in)	Wt (lb/ft)	Grade	Jts	Len (ft)
Tubing Pup Joint	2 3/8	4.70	J-55	1	10.00
Tubing	2 3/8	4.70	J-55	213	6,689.26
Pump Seating Nipple	2 3/8	4.70	N-80	1	1.20
Notched collar	2 3/8	4.70	J-55	1	0.40

Perforation Data

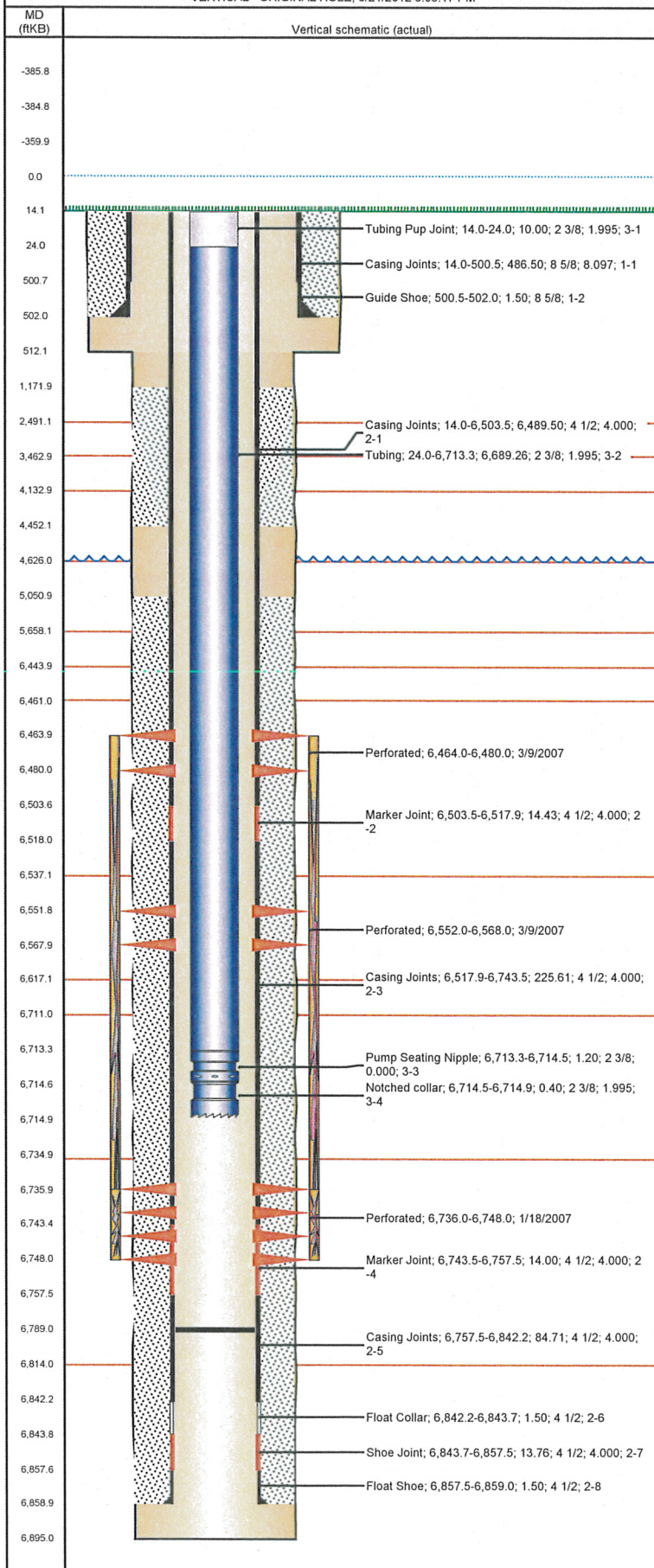
Zone	Bnch/St g	Entered Shot Total	Top (ftKB)	Btm (ftKB)	Date
NIOBRARA, ORIGINAL HOLE	A	64	6,464.0	6,480.0	3/9/2007
NIOBRARA, ORIGINAL HOLE	B	64	6,552.0	6,568.0	3/9/2007
CODELL, ORIGINAL HOLE		48	6,736.0	6,748.0	1/18/2007

Stimulations & Treatments

Bnch/Stg	Date	Zone	Primary Job Type
	4/4/2007		DRILLING/COMPLETION - ORIGINAL
Comment			
Triple Limited Treatment; frac via tbg/deadstring			
Total Add Amount		Total Clean Volume...	Vol Slurry Tot (gal)
Proppant Ottawa 350020 lb		8099213.16	Vol Gas Tot (MCF)
Avg Treat Pressure (psi)	Max Treat Pressure (psi)	Avg Treat Rate (bbl/min)	Max Treat Rate (bbl/min)
4,930.0	5,029.0	18.40	20.10

Well Name: LOLOFF B35-21

VERTICAL - ORIGINAL HOLE, 6/21/2012 3:08:17 PM



Stimulations & Treatments

Bnch/Stg	Date	Zone	Primary Job Type
	12/7/2011	CODELL, ORIGINAL HOLE	RE-FRAC
Comment (CODELL REFRAC) REVERSE STEP RATE @ 178 AWAY . ISIP = 2987 . F.G. = 0.88 , 5 MIN = 2300 , PERFS OPEN = 44 , PERF FRICTION = 16 , NEAR WELLBORE = 462 , PIPE FRICTION = 462 , PIPE FRICTION = 1539 , TOTAL FRICTION = 2017 . PUMPED 3 BBLS WATER TO LOAD ANNULUS AND 2 BBLS TO MAINTAIN PRESSURE DURING THE JOB. (POST-JOB) JOB WENT WELL NO ISSUES TO REPORT . FINAL ISIP = 4087 FINAL F.G. = 1.0 5 MIN = 3776			
Total Add Amount	Total Clean Volume...	Vol Slurry Tot (gal)	Vol Gas Tot (MCF)
Proppant Ottawa 234834 lb	191226.00	204834.01	
Avg Treat Pressure (psi)	Max Treat Pressure (psi)	Avg Treat Rate (bbl/min)	Max Treat Rate (bbl/min)
5,162.0	6,847.0	14.70	15.10

Other In Hole

Run Date	Des	OD (in)	Top (ftKB)	Btm (ftKB)

Logs

Date	Type	Top (ftKB)	Btm (ftKB)
1/5/2007	COMPENSATED DENSITY	2,450.0	6,893.0
1/5/2007	INDUCTION	0.0	6,893.0
1/16/2007	CBL/CCL/GR	1,062.0	6,828.0